

Mini 4-H Farm Animals



- Mini 4-H is open to youth who are currently in **Kindergarten, first, or second grade** at the time of their enrollment on 4HOnline.
- Enroll in Mini 4-H through the 4HOnline website by January 15, <http://in.4HOnline.com>
- There is no state program fee or manual fee for Mini 4-H, a local club fee may apply.
- Each Mini 4-H member can enroll in up to 5 mini 4-H projects and is able to **exhibit 2 mini-projects** at the St. Joseph County 4-H Fair.
- Your completed Mini 4-H project will receive a 4-H ribbon once it is exhibited at the 4-H Fair.
- All Mini 4-H projects are entered on Monday or Tuesday of project turn-in week, one week before fair starts, in the 4-H Exhibit Hall of the Esther Singer Building. Enter Gate 2 off Ironwood Rd.

FARM ANIMALS:

There are many kinds of farm animals. People have farm animals for fun and to make money.

Exhibit Requirements: Your exhibit will be a n activity from this packet. Place your filled out activity sheets in a binder or folder. .

4-H PLEDGE: I pledge...



My head to clearer thinking



My heart to greater loyalty



My hands to larger service



My health to better living

For my CLUB, my COMMUNITY, my COUNTRY, and my WORLD.

Farm Animals

There are many kinds of farm animals. People have farm animals for fun and to make money. Do you have a farm animal at home? What is it? What kind of farm animal do you think might be fun to have?

Here are some animals we see on farms:

☞ beef cows

☞ dairy cows

☞ goat

☞ chickens

☞ rabbits

☞ sheep

☞ pigs

☞ horses



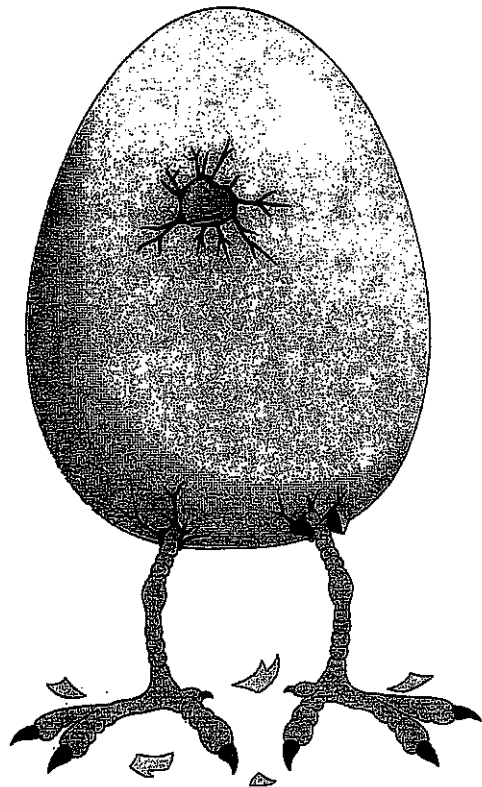
Activity 1 -- Name the Farm Animal

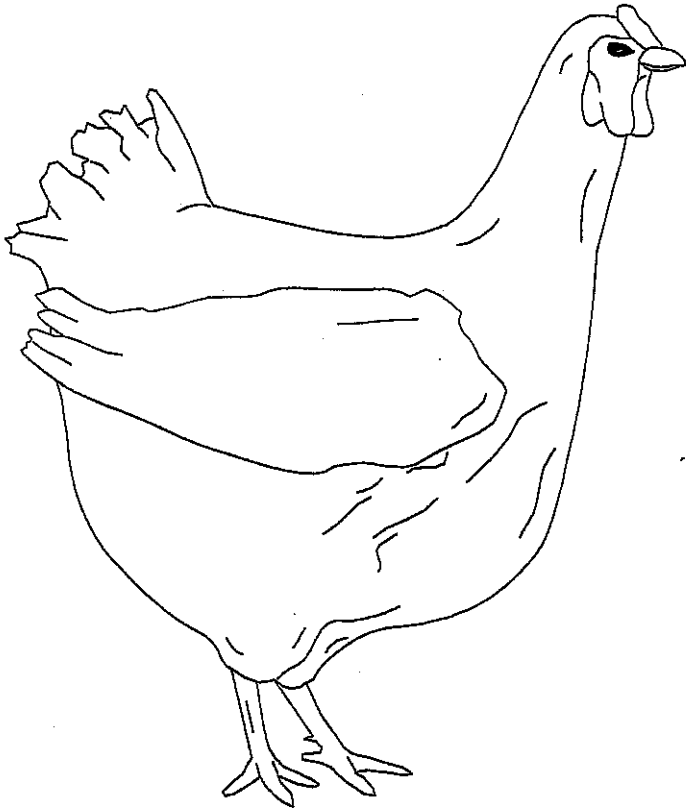
You will need these things:

- pencil
- crayons, markers, or colored pencils
- the animal pictures on the next two pages.

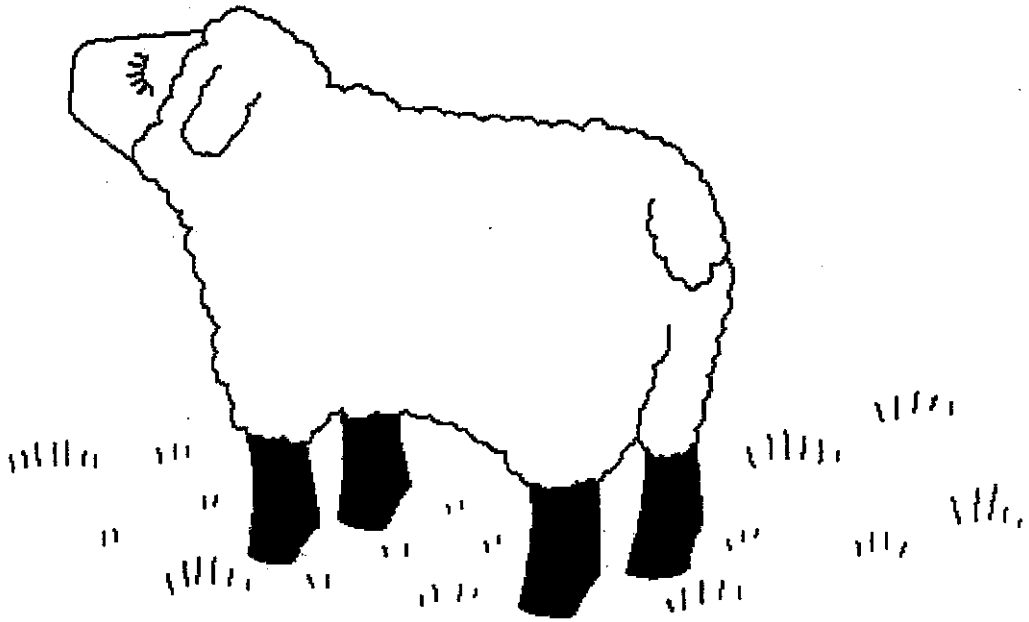
Here is what you do:

1. Look at the pictures of farm animals.
2. Look at the names of farm animals above.
3. Write the name of the farm animal under the right picture.
4. Color them.

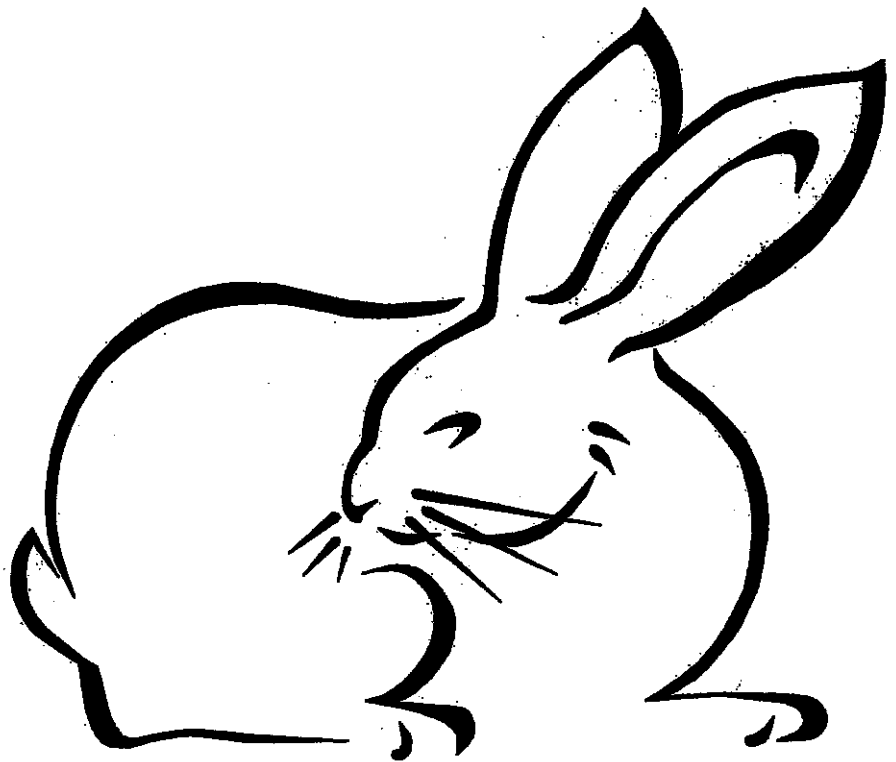




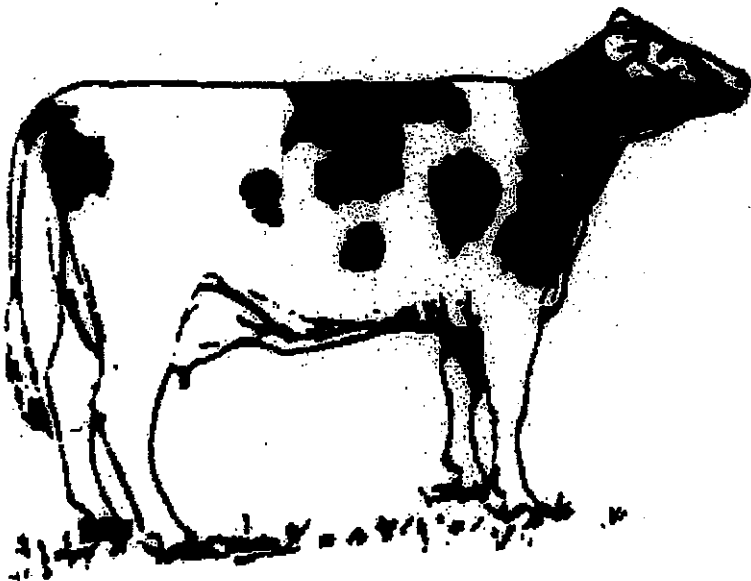
1. _____



2. _____



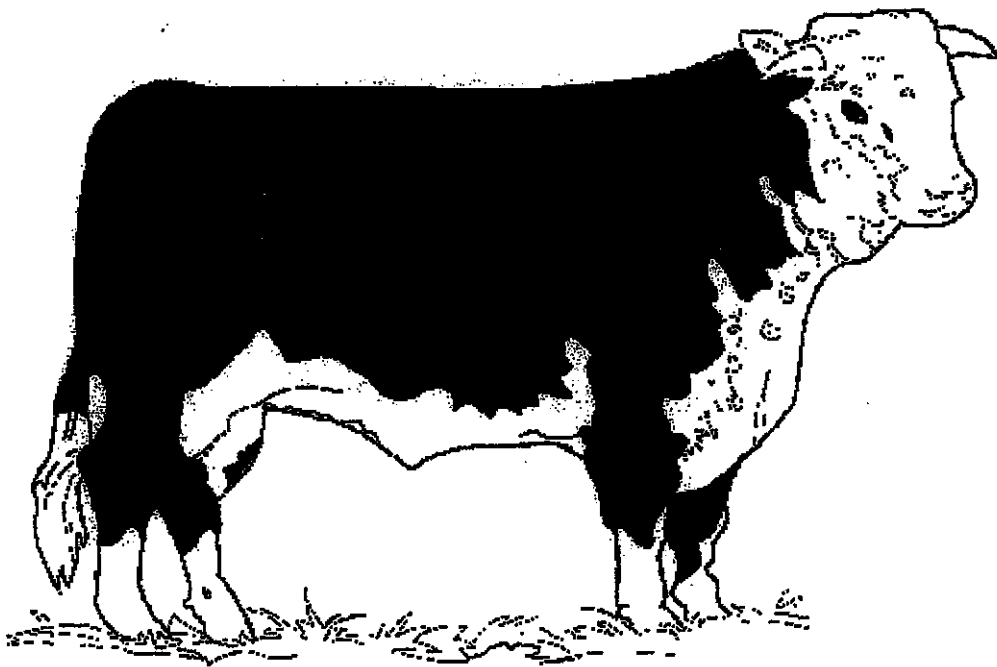
3. _____



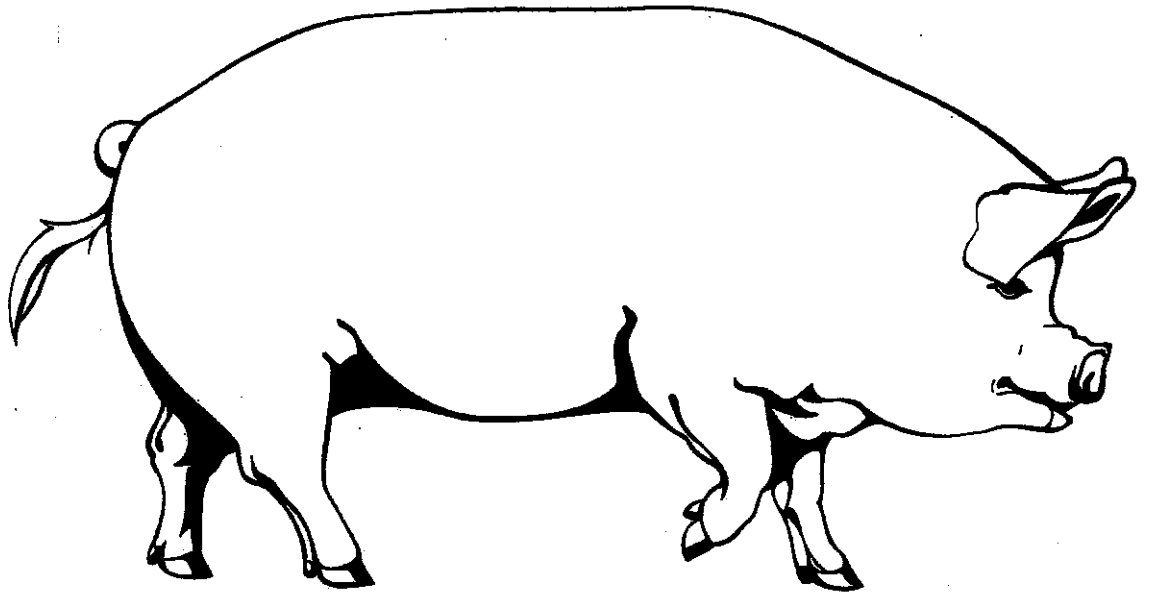
4. _____



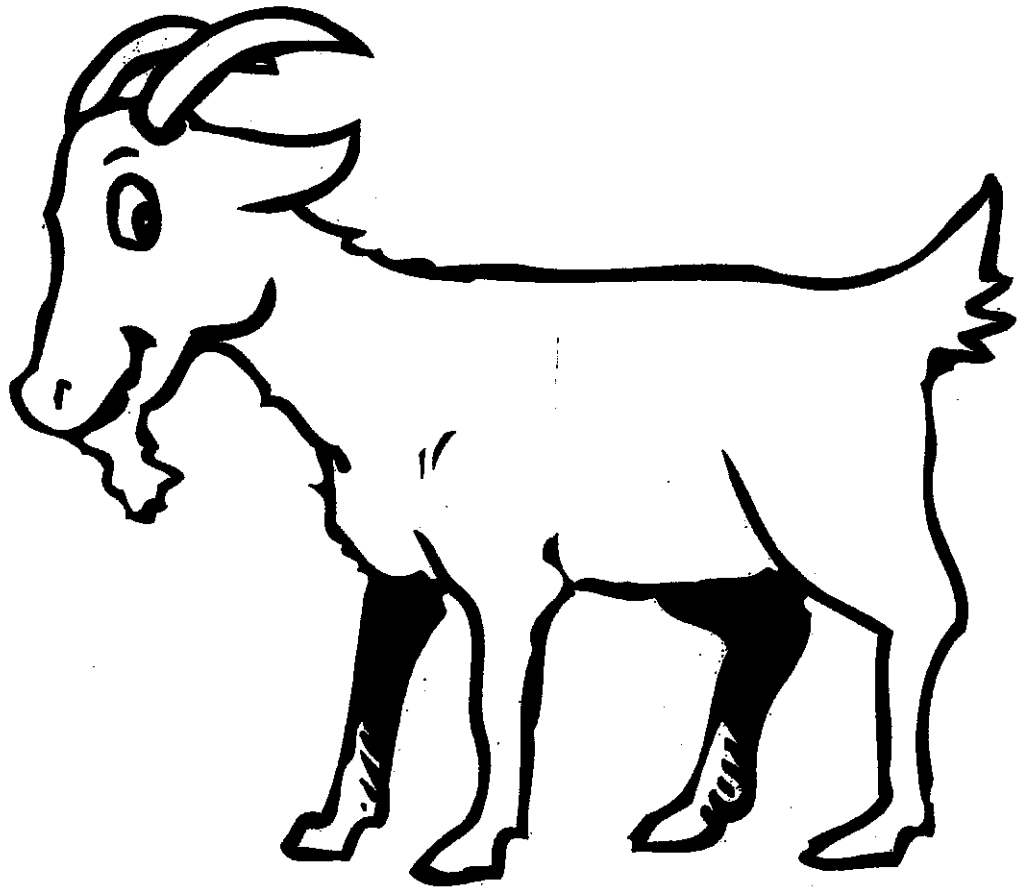
5. _____



6. _____



7. _____



8. _____

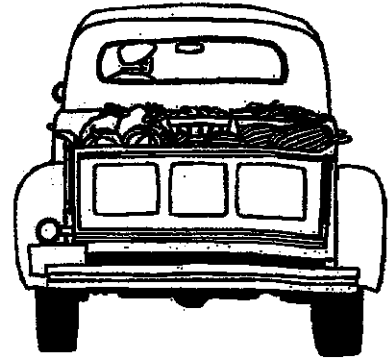


Down on the Farm



The farm is a very important. Farms grow crops, like corn and wheat, that we eat and make bread from. They also raise farm animals. Farm animals are also called *livestock*. Many people eat the meat from these animals.

Farms come in all sizes. Some are very small and are called *hobby farms*. Hobby farms do not have many animals. People who own hobby farms work somewhere else. They raise animals for fun! What hobbies do you have?



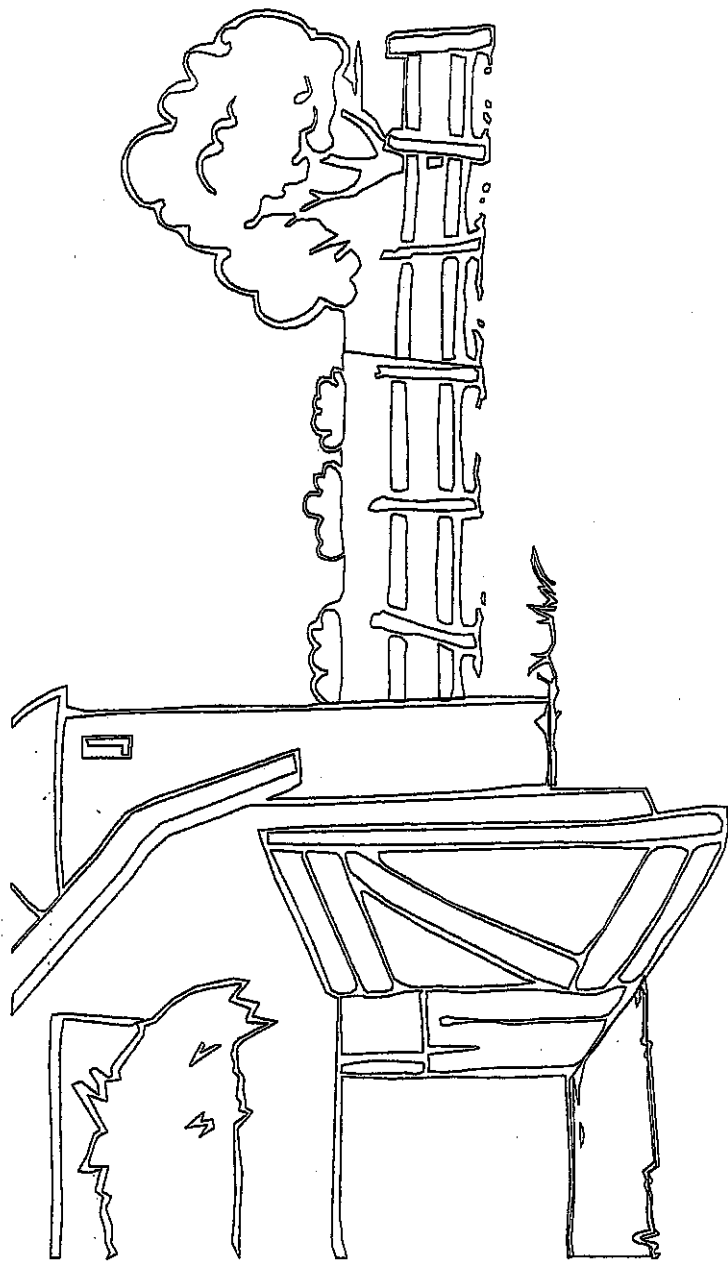
Activity 2 -- Make Your Own Farm

You will need these things:

- pencil
- crayons, markers, or colored pencils
- the farm picture on the next page

Here is what you do:

1. Think about how your farm would look. What kind of animals would you grow?
2. Look at the animals in Activity 1 if you need help.
3. Draw your animals on the next page. There is a farm picture. Where would your animals like to spend the day?
4. Add more things to your farm. You can add grass, tractors, and people. This is your farm ... have fun!





BIG & small



Farm animals come in all sizes. The smallest would be a rabbit and the largest a cow. Each kind of animal also comes in different sizes. A grown cow will be bigger than a calf. Just like you, farm animals get bigger when they grow up.

For people, we call grown-ups *adults*. A very small child is a *baby*. You are called a child ... which is bigger than a baby. *Teenagers* are even bigger. There are also boys and girls.

Farm animals also have different names for sizes of animals and for boys and girls. Here is a chart to help you.

Animal Name	Big Male	Big Female	Young Animal
<i>Beef & Dairy</i>	Bull	Cow	Heifer Calf Bull Calf
<i>Chickens</i>	Rooster	Hen	Chick
<i>Rabbit</i>	Buck	Doe	Kit
<i>Goat</i>	Ram or Wether	Doe	Kid
<i>Sheep</i>	Ram or Wether	Ewe	Lamb
<i>Swine (Pig)</i>	Boar or Barrow	Gilt	Piglet
<i>Horse</i>	Stallion or Gelding	Mare	Foal (Female) Colt (Male)



Activity 3 -- Match the BIG to the small

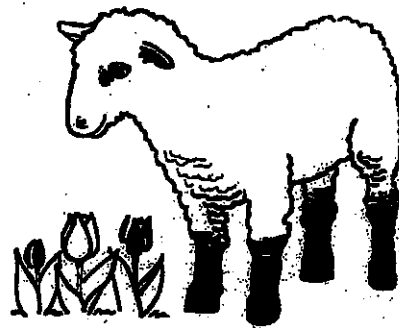
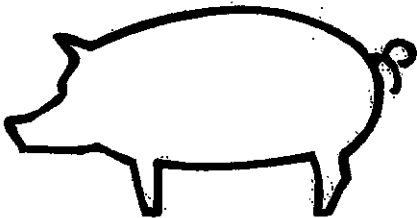
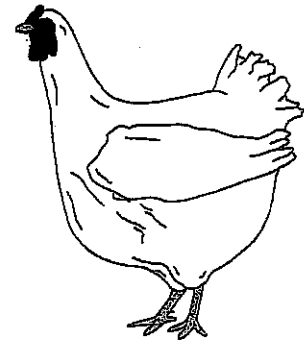
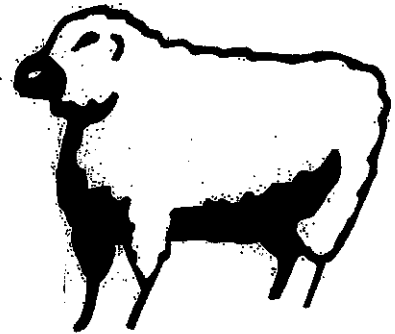
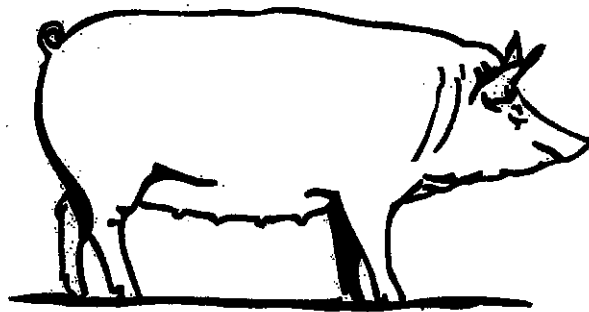
You will need these things:

- pencil
- crayons, markers, or colored pencils

Here is what you do:

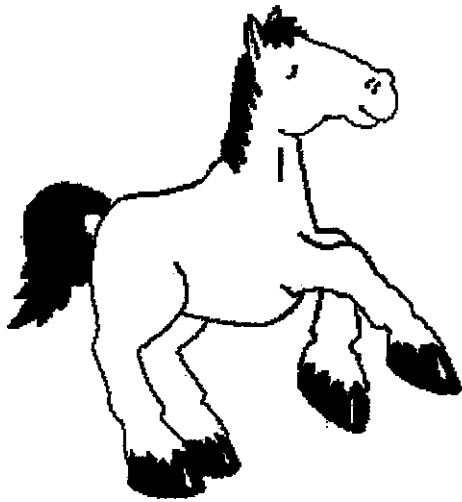
1. Look at the picture. Draw a line to match the big animal to the small animal.

2. Color the pictures if you want!





Activity 4 -- A Farm Animal Model

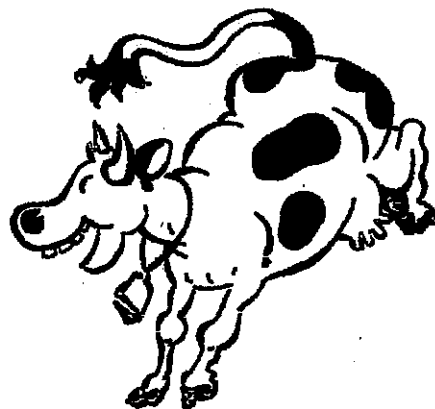
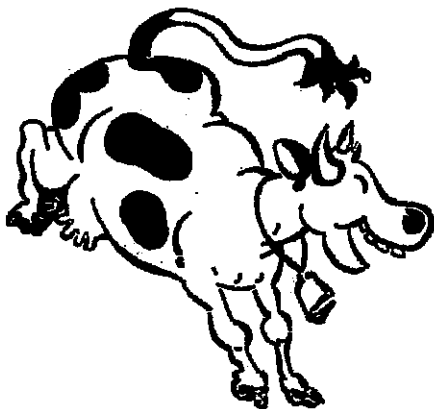


You will need these things:

- modeling clay
- paper, plants, rocks ... things to make your farm animal's home
- shoebox

Here is what you do:

1. Use modeling clay, make a model of a farm animal. You can pick your favorite animal.
2. If you need help, check an encyclopedia for information. A parent, adult or older 4-H member can help with ideas.
3. Using things around the house, make a farm model where your animal might live. Use a shoebox for your farm.
4. Add you animal to the farm model.
5. Having fun? Make more animals from your clay. Add them to the farm model, too!





Farm Food



When you are hungry, you go to the kitchen to eat. Animals also look for food when they are hungry. Some animals get their food from the ground if they live outside. Some get their food from a farmer who feeds them in a barn.

Farm animals eat a lot of food. Chickens like corn, cows like hay and horses like oats. Most feed is grown by farmers. Some people buy their feed and grain at local *feed stores*. Grain is a kind of feed (corn is a grain). Don't forget ... just like you, animals get thirsty, too! They love their water.



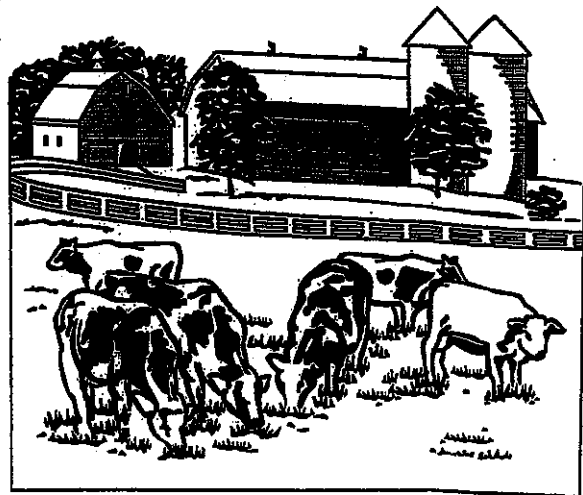
Activity 5 -- Let's Eat!

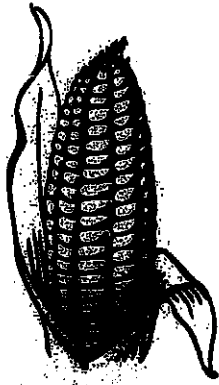
You will need these things:

- pencil
- crayons, markers or colored pencils

Here is what you do:

1. Look at the feed pictures. Draw a line to match the picture to the word.
2. Color the pictures if you want!
3. Do you eat any of these grains?

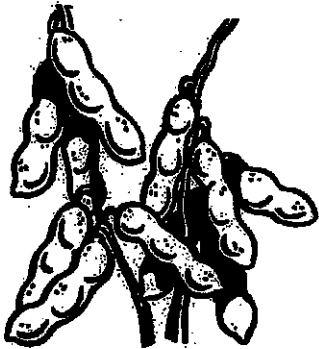




Oats



Hay



Corn



Soybeans



More Than Meat



Farm animals are very special or important to us. Not only do they help feed us, but they also give us a lot of other things. Do you have a belt? Sometimes belts are made of leather. Leather comes from cows. Do you like a warm sweater? Many sweaters are made from wool. Wool comes from sheep.

Everywhere we look, there are things that farm animals give us. What can you find around your house?



Activity 6 -- Wool and More!

You will need these things:

- pencil
- the chart on the next page

Here is what you do:

1. Look around your house for things made from farm animals. Start in the kitchen (in the refrigerator) to get going. Then check out all the different rooms.
2. Write down the things you find under the farm animal you think it comes from.
3. If you need help, ask a parent, adult or older 4-H member can help with ideas.
4. We have helped you with a two.

