


Caps must be clean, sorted, and weighed before we can have the bench made. Thanks to the 4-H'ers and clubs that have been working on this project, we've learned some tips. Here's how you can help.

1. Clean and dry the caps. No food residue can be on them. An easy way to do this is to put them in the washer with a few cotton rags, then spread them on a towel to dry.
2. Remove any paper, foil, or other non-plastic material inside the cap.
3. Follow the sorting instructions to ensure that only the approved plastic material is included. If we send any non-approved material, the entire load will be rejected, and we'll have to resort everything.

If you aren't sure that it's an acceptable item, please don't include it.

Types of caps that we accept

<i>Caps: Must be CLEAN AND DRY</i>	
<p>Medicine Bottle Caps with any cardboard inserts removed</p> 	<p>Hair Spray, Paint & Deodorant Caps</p> 
<p>Milk Jug Caps</p> 	<p>Flip-top caps (ie: Ketchup, Mustard, Creamer tops)</p> 
<p>Detergent Caps with white gasket and label removed</p> 	<p>Toothpaste Tube & Ointment Tube Caps</p> 

Acceptable Caps & Lids Cont'd.

Drink Bottle Caps



Cottage Cheese, Sour Cream & Cool Whip Container Lids



Peanut Butter & Mayonnaise Container Lids



Ice Cream Bucket, Misc Lids under 8"



Butter Container & Frosting Lids



With all of the acceptable caps and lids listed above, we also accept caps and lids with correct recycle numbers on them of 2, 4 or 5 that are under 8" wide



HDPE
High Density
Polyethylene



LDPE
Low Density
Polyethylene



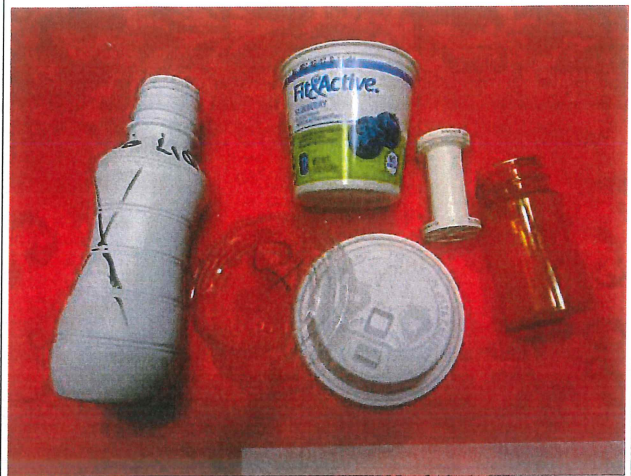
PP
Polypropylene

~~XXXX~~ NOT ACCEPTABLE ~~XXXX~~

Metal Of Any Kind with the plastic, Soap Pumps, Lotion Pumps & Trigger Sprayers



Fast Food Drink Bottles/Lids & ANY Containers



Other Unacceptable



Prescription Bottles



Medicine Bottles



Any Capor Lid that is Dirty

