

9-2-2024 (Monday of the week submitted)



Extension - Martin County

By Dena M. Held
County Extension Director & Extension Educator – 4-H Youth Development
Martin County
Text | 812-653-2089
Voice | 812-295-2412
E-mail | heldd@purdue.edu

Purdue University, Indiana Counties and U.S. Department of Agriculture Cooperating
An Affirmative Action/Equal Opportunity Institution

The Purdue Extension Martin County weekly column is provided to help all learn about programs & opportunities. We highlight events from Purdue University & Extension where we hope you will choose to be part of Extension.... where there is Opportunity4All!

DO YOU WANT TO HELP MAKE THE BEST BETTER? PROVIDE YOUR FEEDBACK!

Did you miss the Martin County 4-H Program & 4-H Fair reflection meeting the end of July? You are invited to e-mail all feedback, comments and suggestions to heldd@purdue.edu so that we can work together to make the best better. Feedback is welcome all year long, but is especially helpful to have by September 15th as reviews are made for the start of the next program year which begins October 1st.

INDIANA STATE FAIR EXHIBIT PICK UP DETAILS

Exhibit pick up is now through **September 23, 2024**. If you need a different time, please call or text to make pre-arrangements. We are happy to help! Please be aware, some projects at state level are donated or discarded per state staff discretion. Exhibits/ribbons/scorecards/etc. left at The Martin County Office after September 23rd will be repurposed or thrown away.

MARTIN COUNTY 4-H HORSE & PONY CLUB MEETINGS

When: Sunday, September 8
Sunday, September 15
Time: 2 pm to 5 pm
Where: Martin County 4-H Fairgrounds & Event Center, Horse & Pony arena
Who: Martin County 4-H Members

GET READY FOR 2024-2025 4-H ENROLLMENT! TWENTY DAYS OF TERRIFIC OFFERED TO PROVIDE #OPPORTUNITY4ALL!

Martin County 4-H is offering Twenty Days of Terrific for all youth to enroll with the \$20 enrollment fee paid on your behalf! This is in effect from October 1 through October 20, 2024! Mark your calendar now for October 1st to enroll and submit enrollment at v2.4honline.com.

ADULT VOLUNTEER ENROLLMENT FOR THE NEW PROGRAM YEAR STARTS OCTOBER 1ST

Thank you to each and every Extension/4-H volunteer for all you do! We are exciting in preparing for a great new program year.

All adult volunteers must re-enroll to obtain volunteer certification for 2024-2025 programming season at <https://v2.4honline.com>. Please plan to complete your re-enrollment early in the month of October and prior to service.

2024 MARTIN COUNTY 4-H TURKEY DINNER & FALL 4-H ACHIEVEMENT AWARDS

Make plans now to attend the annual 4-H Turkey Dinner with the fall 4-H Achievement Awards celebration!

When: Sunday, November 3, 2024 (times TBA)

Where: Martin County 4-H Fairgrounds & Event Center, Community Building

More details coming soon!

MARTIN COUNTY 4-H FAIR 2025 & 2026 DATES

2025: Thursday, July 10 to Tuesday, July 15, 2025

2026: Thursday, July 9 to Tuesday July 14, 2026

PURDUE EXTENSION FARM STRESS TEAM

by Abby Heidenreich, ANR Educator and County Extension Director for Gibson County.

Since its creation in 2018, the Purdue Extension Farm Stress Team has committed itself to mental health awareness in the agriculture community. The team, made up of 22 Agriculture and Natural Resources (ANR) and Health and Human Sciences (HHS) educators across the state, works to meet the mental health needs of the agriculture industry on multiple levels. Early in the team's history, educators were trained to deliver two programs developed by Michigan State University. Since then, the team has developed new curriculum and awareness efforts thanks to North Central Farm and Ranch Stress Assistance Network and Indiana State Department of Agriculture-led National Institute of Food and Agriculture grants and partnerships with CareSource.

Among the grant-funded projects were ag response training for mental health crisis call center workers (988 hotline), Indiana audience-specific curriculums/presentations, billboards, a radio awareness campaign, PSA videos, trade show booths, a Tools for Today's Farmer podcast and, most recently, a youth-focused curriculum. Along with those efforts, many single-event programs have been developed as well – all in an effort to meet very specific needs in rural communities experiencing crises.

The Farm Stress Team works on a local, regional, state and national level to reach audiences of many kinds every day. The team has developed partnerships with many industry groups that want to address mental health in their employees or clientele as well. Team efforts focus on everyone from local farmers, farm businesses, veterinarians, Farm Service Agency offices, banks, meatpackers, mental health providers, ag teachers and more.

In the 2023-2024 program year, 1,176 individuals have attended 23 Farm Stress Team programs. The Purdue Extension Farm Stress Team website houses four PSA videos that have more than 5,000 combined views, as well as many printable resources and the business toolkit that agriculture businesses can use to evaluate the mental health of their employees. The Tools for Today's Farmer podcast has 67 episodes with 6,500 total plays worldwide, featuring interviews with a wide range of individuals in the agriculture industry sharing their experiences with stress and mental health. In 2023, the team had seven billboards with a reach of more than 4.2 million people in communities with statistically high farmer suicide rates.

Upcoming events include many fall and winter trade shows, including the National FFA Convention in Indianapolis, where the team will launch the new youth curriculum. To learn more about the team, visit extension.purdue.edu/farmstress or contact Abby Heidenreich at aheidenr@purdue.edu.

FORAGE SORGHUM FIELD DAY SEPTEMBER 10, 2024

Tours will be offered at two times, afternoon tour from 3 pm – 5 pm EST & evening tour (repeated afternoon tour) from 6 pm – 8 pm EST

Light supper & bull test station tour 5 pm – 6 pm EST

Questions or accessibility needs? Contact 765-494-4783 or johnsonk@purdue.edu

Location: Feldun-Purdue Ag Center, Bedford, IN

RSVP: by September 5, 2024 to sheltonb@purdue.edu

HOOSIER HAY CONTEST DEADLINE TO ENTER IS SEPTEMBER 30TH

The Indiana Forage Council's Hoosier Hay Contest begun Saturday, June 1. The friendly competition encourages Indiana producers to cultivate higher quality hay during the 2024 season.

The contest is supported by Purdue University Extension and sponsored by SureTech Laboratories, Hutson Inc., CISCO Seeds, the Indiana Beef Cattle Association, the Indiana Dairy Producers and the Indiana Sheep Association.

The cost to participate is \$14 per hay sample or \$20 per baleage sample, with the contest being limited to 100 samples. Entries must be received by SureTech Labs and the IFC by Sept. 30.

Rules and entry forms can be found online. For more information, contact Minton at 812-279-4330, nminton@purdue.edu, or Jason Tower at 812-678-3411, towerj@purdue.edu.

For additional details: <https://www.purdue.edu/newsroom/2024/Q2/hoosier-hay-contest-creates-a-friendly-and-educational-competition-among-producers/>

NO COST TO YOU MATTER OF BALANCE CLASS STARTING IN SEPTEMBER!

Do you have concerns about falling? This program emphasizes practical strategies to manage falls.

YOU WILL LEARN TO:

- ◆ view falls as controllable
- ◆ set goals for increasing activity
- ◆ make changes to reduce fall risks at home
- ◆ exercise to increase strength and balance

WHO SHOULD ATTEND?

- ◆ anyone concerned about falls
- ◆ anyone interested in improving balance, flexibility and strength
- ◆ anyone who has fallen in the past
- ◆ anyone who has restricted activities because of falling concerns

Time: 1 pm to 3 pm est

Dates:

Wednesday, September 18

Wednesday, September 25

Wednesday, October 2

Wednesday, October 9

Wednesday, October 16

Wednesday, October 23

Wednesday, October 30

Wednesday, November 6

Location: Poplar 313 Poplar Street, Loogootee, IN

Cost: Free, limited to the first 15 participants.

How to register: Call LeAnn Petit 812-295-4433

Managing Concerns About Falls Volunteer Lay Leader Model ©2006. This program is based on Fear of Falling: A Matter of Balance. ©1995 Trustees of Boston University. All rights reserved. Used and adapted by permission of Boston University. A Matter of Balance Lay Leader Model Recognized for Innovation and Quality in Healthcare and Aging, 2006, American Society on Aging. A Matter of Balance Lay Leader Model was developed by a grant from the Administration on Aging (#90AM2780). The University of Southern Indiana Geriatrics Workforce Enhancement Program is supported by the Health Resources and Services Administration (HRSA) of the U.S. Department of Health and Human Services (HHS) as part of an award totaling \$5,000,000 with 0% percentage financed with non-governmental sources. The contents are those of the author(s) and do not necessarily represent the official views of, nor an endorsement, by HRSA, HHS, or the U.S. Government. For more information, please visit HRSA.gov.

2025 INDIANA SMALL FARM CONFERENCE DATES ANNOUNCED

When: March 4-5, 2025

Where: Hendricks County Fairgrounds, Danville, IN

The conference covers a broad range of topics relevant to diversified farming operations, including fruit and vegetable production, food safety, small-scale livestock production, business development, urban agriculture, marketing, mushroom production, food systems, farmland access, regenerative agriculture, and more. Speakers typically include farmers, Extension staff, and professionals from agricultural agencies and organizations.

CATEGORY 7B TERMITE CONTROL COMMERCIAL PESTICIDE APPLICATOR WORKSHOP

This mandatory attendance, hands-on program will include instruction on biology of wood destroying pests, elements of construction, inspection tips and graph preparation, inspection forms, equipment and calibration, the Indiana Pesticide Use and Application Law, and preconstruction treatment. A Category 7b training manual is included with registration. This workshop is a part of initial certification. Recertification credits (CCH's) are NOT awarded. The program will begin at Seating is limited. Personal or company checks, money orders, purchase orders, MasterCard, VISA, or Discover will be accepted. Cancellation must be made 5 days in advance of the program to receive a refund. A fee will be charged to cancel a registration. The mandatory attendance to this workshop is required one time. Refunds of registration fee will NOT be given if the workshop was previously attended.

Dates: September 18-19, 2024

Times: 8:30 a.m. (EST) and end at approximately 5:00 p.m.

Location: Purdue Structural Pest Control Training Center, Purdue University, 1340 Cherry Lane, West Lafayette, IN

Registration: <https://web.cvent.com/event/69453fa0-38a9-4845-bb5f-9529c94053d0/summary>

Registration fee: \$200

2024 PEST MANAGEMENT AND LAWN MAINTENANCE WORKSHOP

This hands-on program will include instruction to assist lawncare business owners.

Topics: basic turf maintenance, turf pest management programs, calibration and use of turf pesticide application equipment, and rules and regulations specific to lawncare applicators. Recertification credits (CCH's) will not be awarded.

When: October 1st & 2nd, 2024

Time: 8:30 AM - 4:00 PM Eastern Time

Where: William H Daniel Turfgrass Research and Diagnostic Center Registration: <https://cvent.me/PPnB7E>

What to Bring: Numerous training activities will take place outdoors regardless of temperature or precipitation. Dress accordingly.

Meals: Lunch will be provided both days.

Exams: Category 3b certification requires passing 2 exams, the pesticide core and Category 3b exams. The purpose of this workshop is NOT exam preparation. No certification exams will be offered at the workshop. People needing to take the certification exams should go to the Metro Institute to register for exams at a state-wide location. Go to: www.metrosignup.com/Indiana.

WEAKENING FARM INCOME PROSPECTS WEIGH ON FARMER SENTIMENT

September 3, 2024 by James Mintert and Michael Langemeier, Purdue Center for Commercial Agriculture

Adapted from: <https://ag.purdue.edu/commercialag/ageconomybarometer/weakening-farm-income-prospects-weigh-on-farmer-sentiment/>

In a sharp turnaround from July, farmer sentiment nose-dived in August. The August *Purdue University-CME Group Ag Economy Barometer* fell 13 points vs. July, leaving the index at 100, while the *Index of Current Conditions* fell 17 points to 83, and the *Index of Futures Expectations* shed 11 points to a reading of 108. Weakening farm income prospects weighed on farmer sentiment as the outlook for a bountiful fall harvest were more than offset by declining crop prices. This month's decline in the barometer takes farmer sentiment back to the average level observed from fall 2015 to winter 2016, a period when farm incomes were declining sharply. The weakness in farmer sentiment could indicate that farmers expect this year's farm income downturn to last for an extended period. Data collection for the August survey took place from August 12-16, 2024.

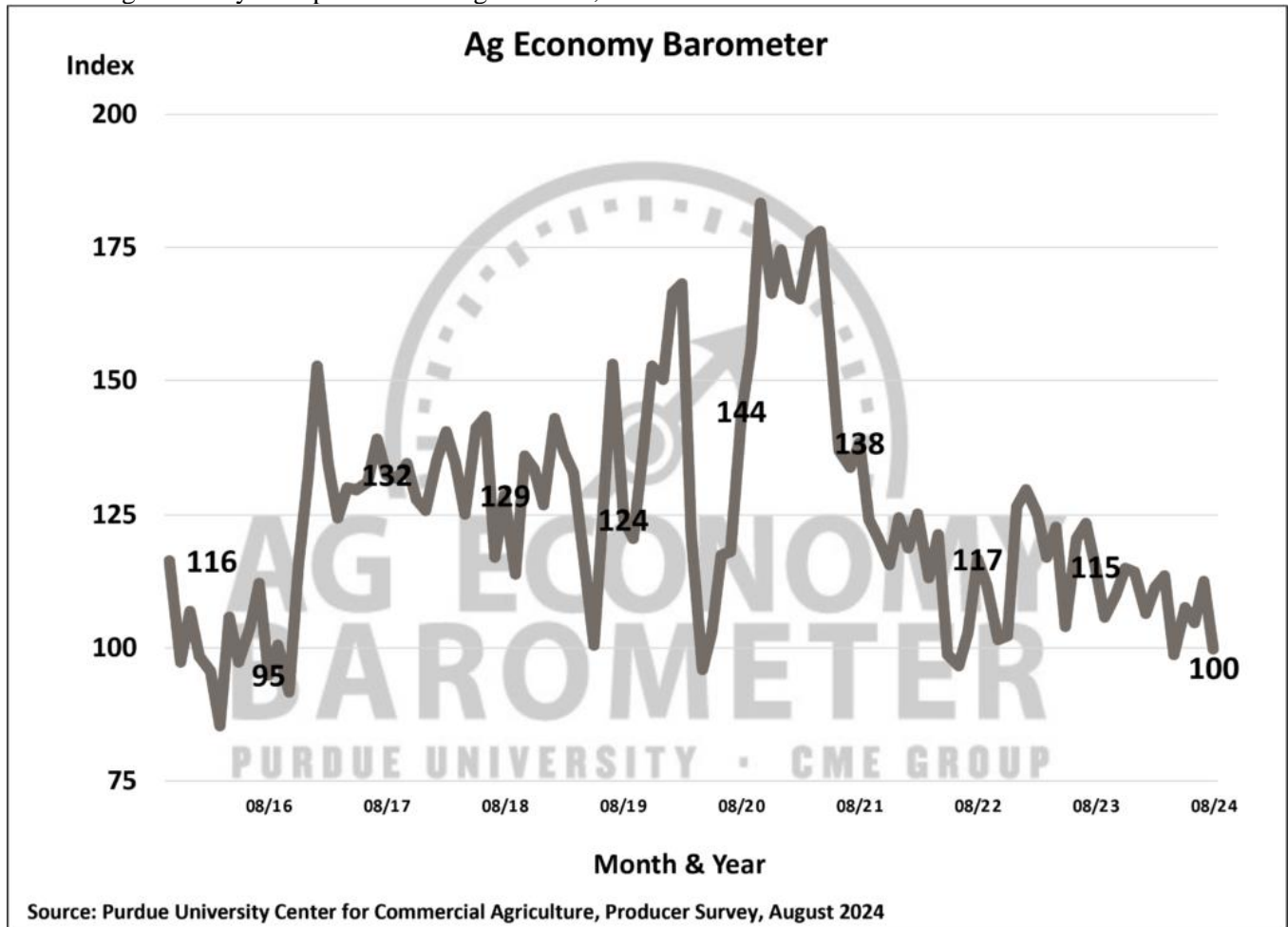
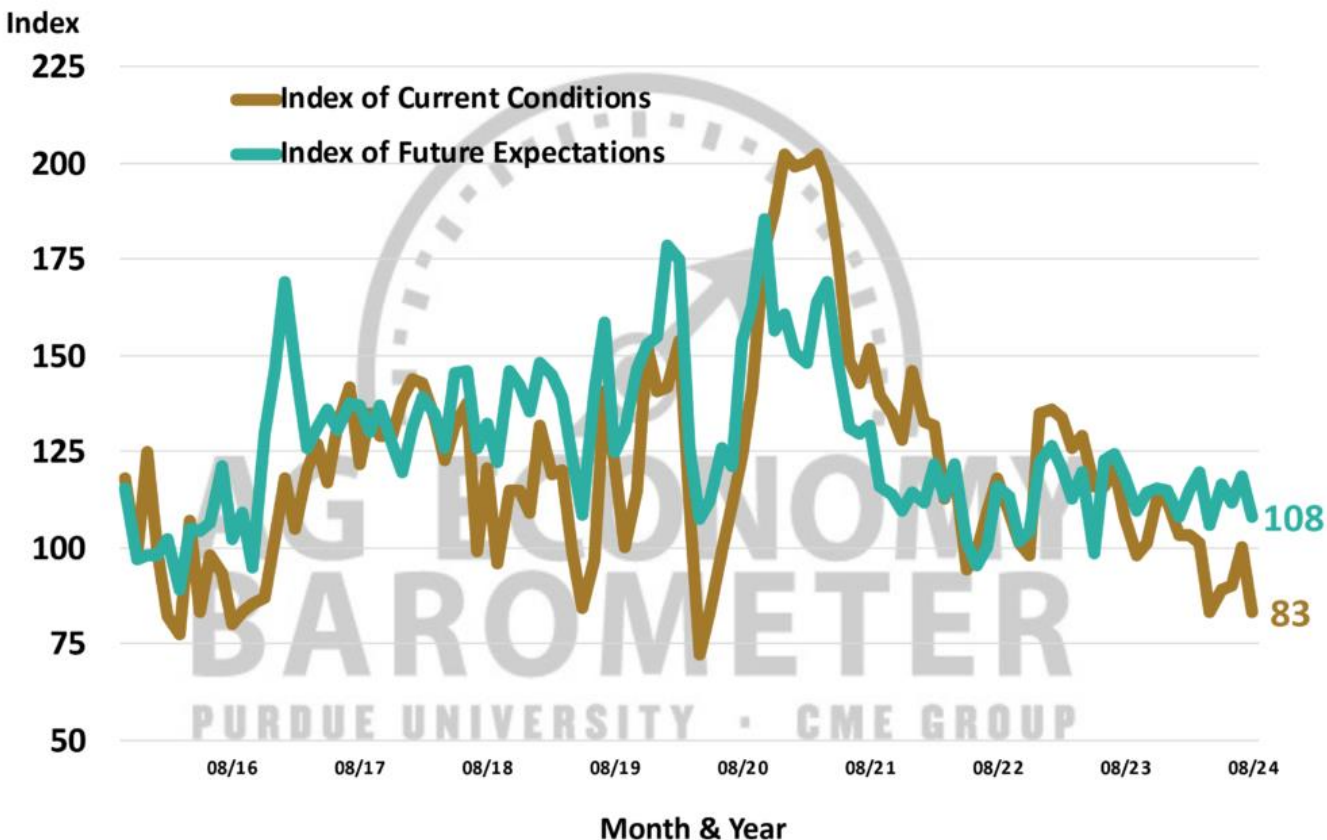


Figure 1. Purdue/CME Group Ag Economy Barometer, October 2015-August 2024.

Indices of Current Conditions and Future Expectations

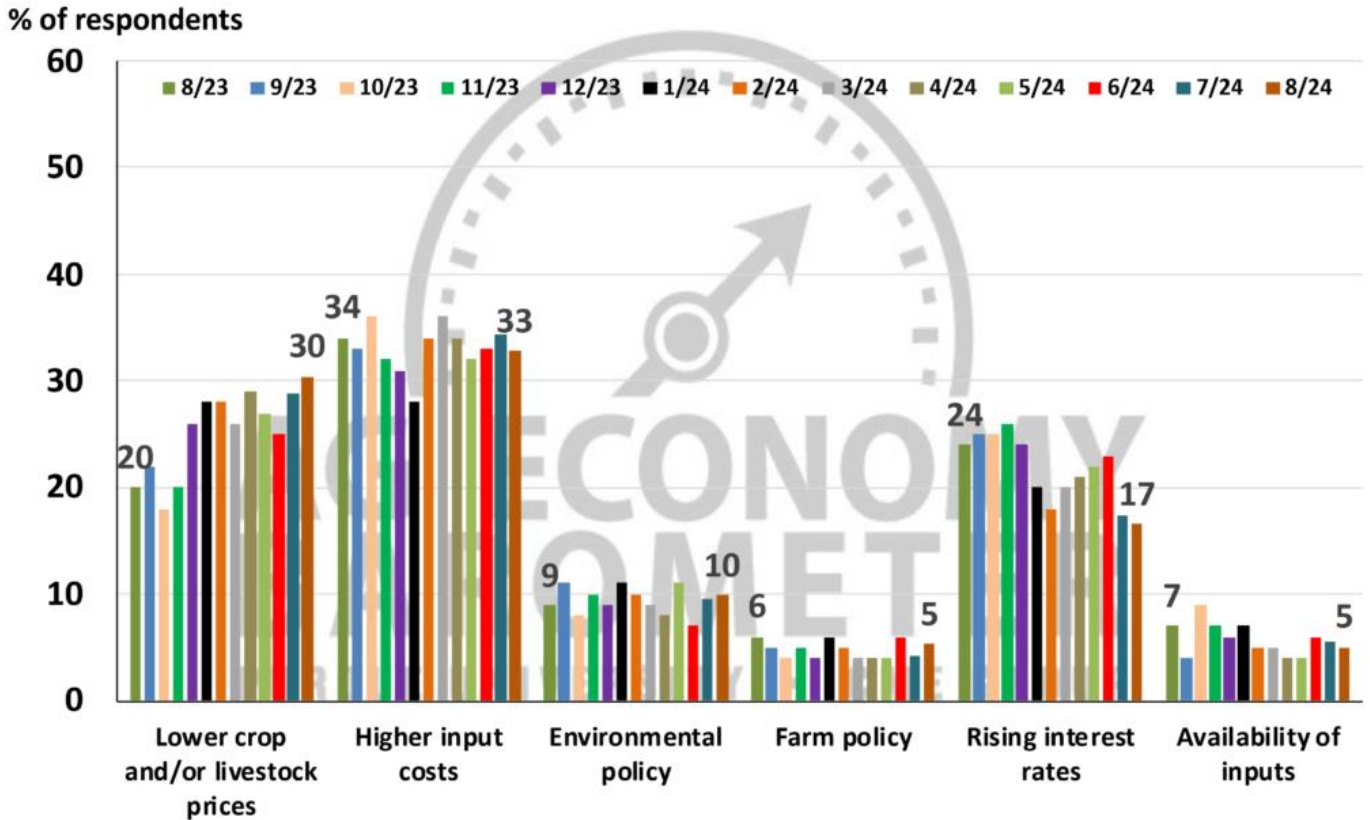


Source: Purdue University Center for Commercial Agriculture, Producer Survey, August 2024

Figure 2. Indices of Current Conditions and Future Expectations, October 2015-August 2024.

Over the last several months, farmers' concerns about weakening commodity prices have become more evident in barometer surveys. In the August survey, producers' concerns about commodity prices nearly eclipsed what has consistently been their top concern: high input prices. This month, 30% of respondents picked lower commodity prices as a top concern compared to 33% who chose high input costs. This was a marked departure from a year earlier when just 20% of survey respondents pointed to weak commodity prices as a top concern for their farm operation. At the same time, fewer respondents chose rising interest rates as a top concern. This month, 17% of respondents pointed to interest rates as a top issue, down from 24% a year ago. In a related question, two-thirds (68%) of respondents said they expect interest rates to fall during the upcoming year, while only 19% said they look for rates to rise.

Looking ahead to next year what are your biggest concerns for your farming operation?



Source: Purdue Center for Commercial Agriculture, Producer Survey, August 2024

Figure 3. Biggest Concerns for Your Farming Operation, June 2023-August 2024.

The August *Farm Financial Performance Index* fell 9 points below a month earlier and was 14 points lower than a year ago. This month's reading was the weakest response to the financial performance question since July 2020, when COVID-related lockdowns still dominated the headlines. Consistent with expectations for weak financial conditions, producers again signaled that the investment climate in production agriculture is also poor as the *Farm Capital Investment Index* fell 7 points to 31. This month's investment index was also 6 points lower than a year earlier and matched the index's all-time lowest reading.

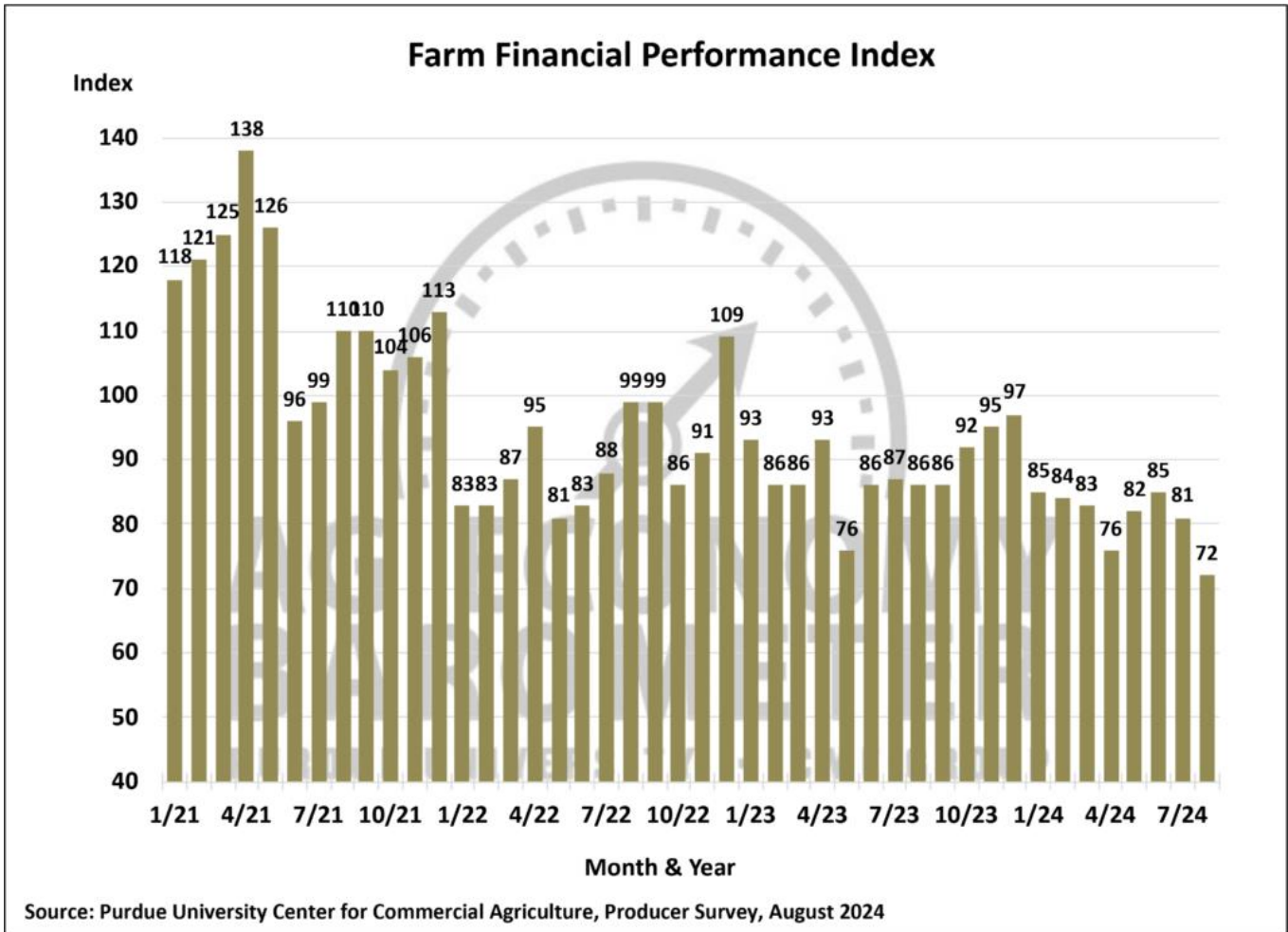
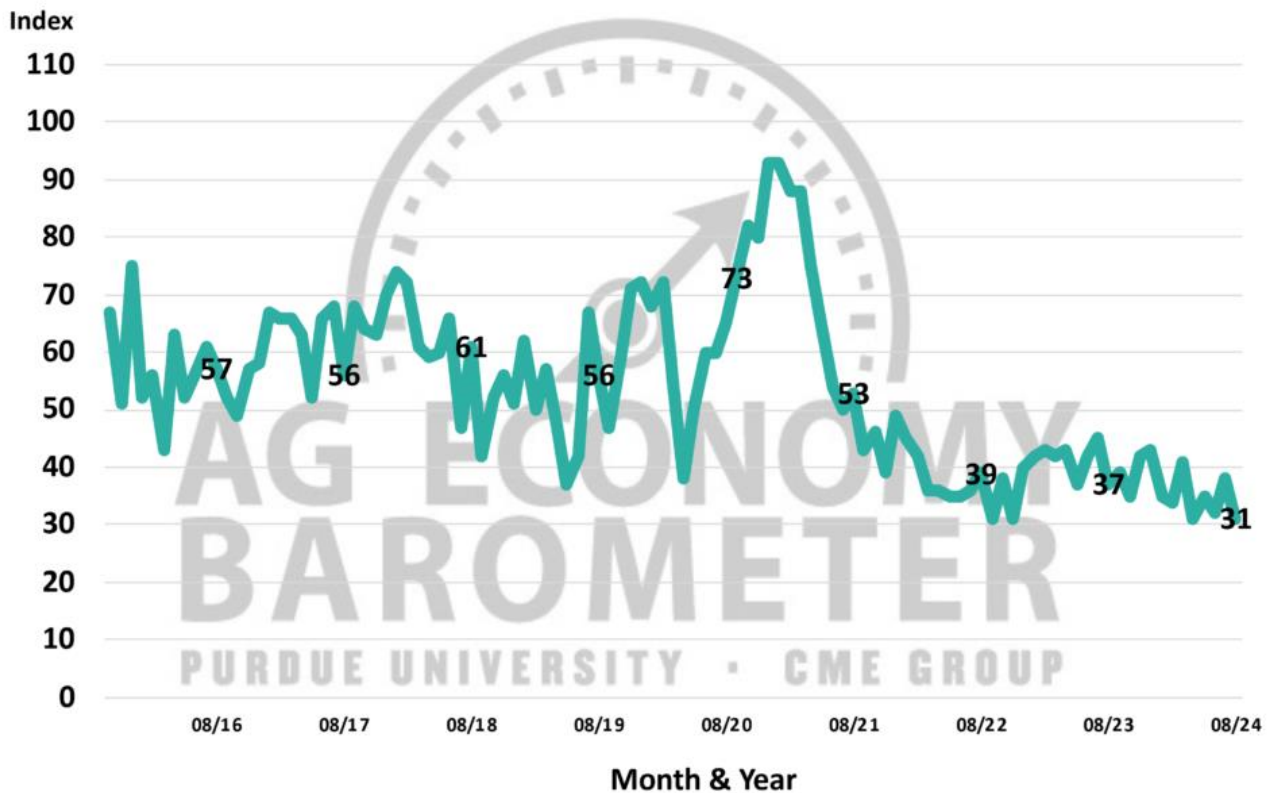


Figure 4. Farm Financial Performance Index, January 2021-August 2024.

Farm Capital Investment Index



Source: Purdue University Center for Commercial Agriculture, Producer Survey, August 2024

Figure 5. Farm Capital Investment Index, October 2015-August 2024.

Producers' perspective on farmland values weakened considerably in August compared to July as the *Short-Term Farmland Value Expectations Index* fell 13 points to 105. This month's decline left the investment index 21 points below a year ago and 41 points below three years ago when the index was near its peak. The sharp turnabout in the index this month was primarily attributable to an increase in the percentage of producers who think farmland values will decline in the next year, which rose from 13% in July to 24% in August. The long-term farmland index also weakened, falling 4 points below July's index to a reading of 142.

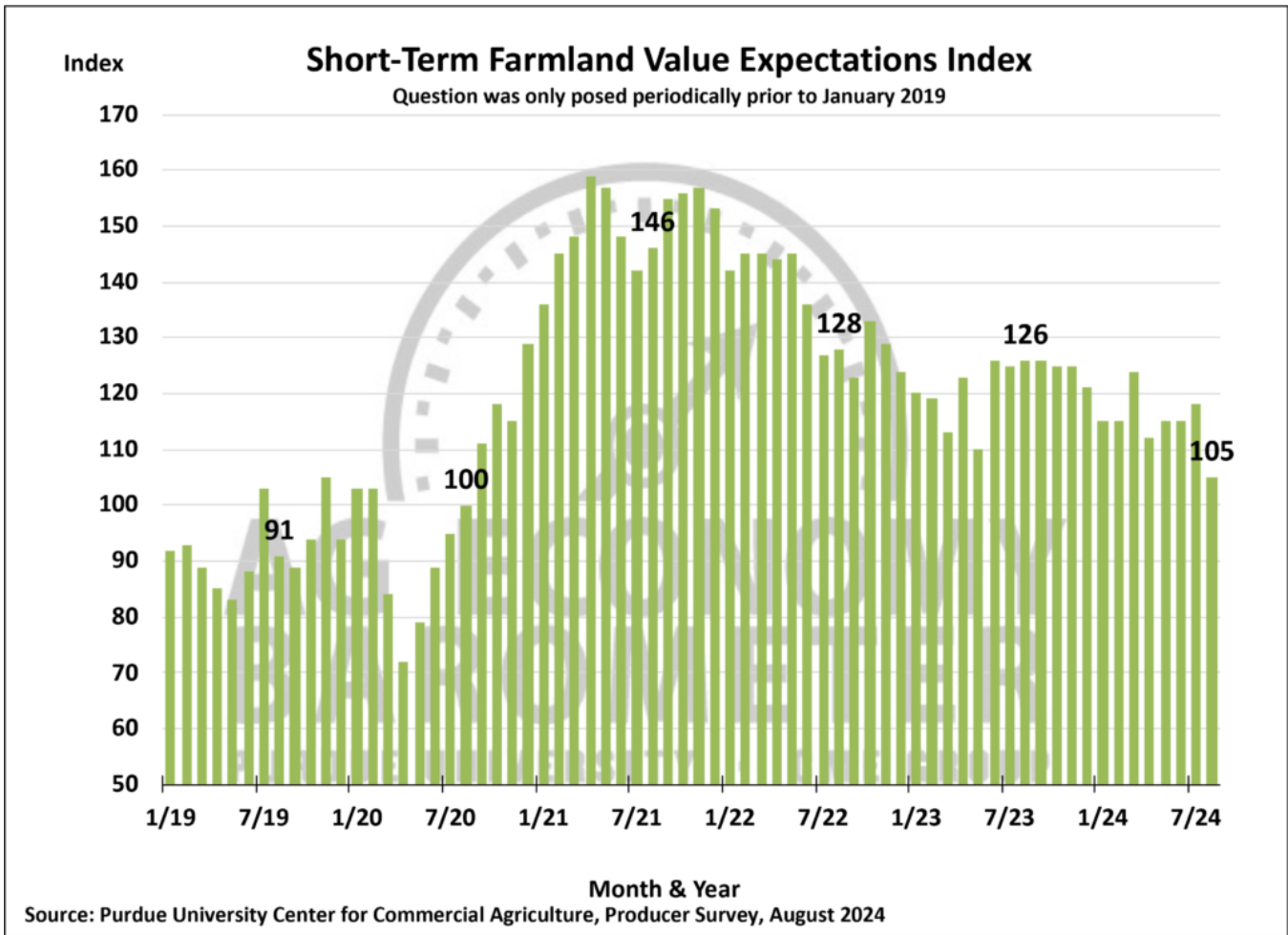


Figure 6. Short-Term Farmland Value Expectations Index, January 2018-August 2024.

Despite concerns about the farm income outlook, most farmers in our survey still say they expect farmland cash rental rates for the 2025 crop year to remain unchanged. This month, 70% of U.S. crop farmers in our survey said they expect farmland cash rental rates to stay about the same, with just 16% of respondents reporting that they anticipate declining lease rates.

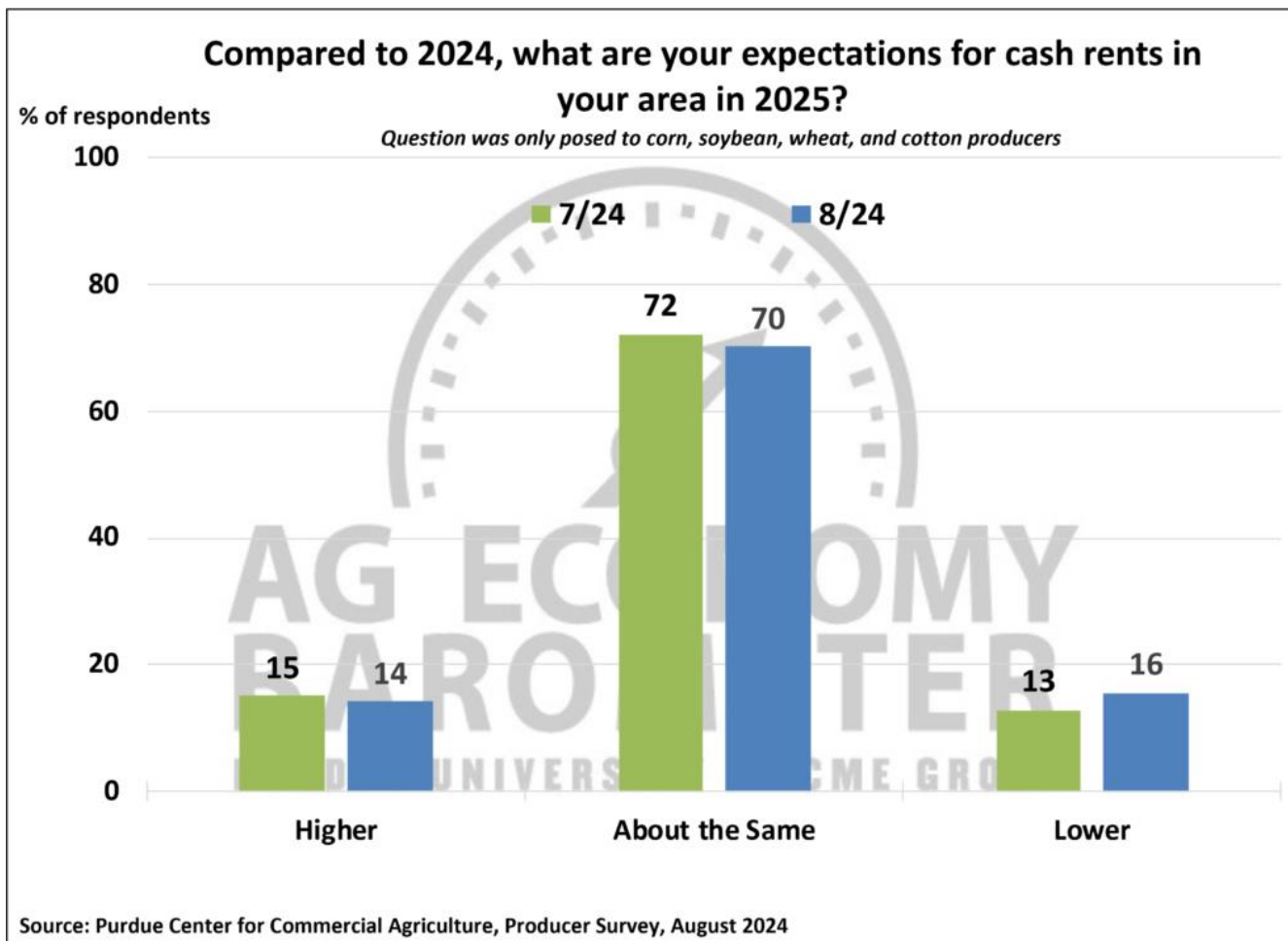


Figure 7. Expectations for Farmland Cash Rental Rates in 2025, July-August 2024.

Wrapping Up

Farmer sentiment weakened sharply in August as the *Ag Economy Barometer* index fell 13 points compared to July. The August reading of 100 places farmer sentiment on par with sentiment in late 2015 and early 2016 when the U.S. ag economy was in the early stages of a downturn. Farmers were most pessimistic about near-term conditions, as the current index fell 17 points below a month earlier. Sentiment weakness was driven by expectations for weak farm financial performance and extended to a weak outlook for capital expenditures by farm operations. Although the short-term farmland index remained above 100, signaling that more survey respondents still expect values to rise over the next year than look for values to decline, it's clear that farmers are less optimistic about farmland values this summer than in recent years. Notably, the short-term farmland index posted its lowest reading since spring 2020. Despite the weakness in farmer sentiment and expectations for weak farm financial performance, 70% of crop farmers in this month's survey said they expect farmland cash rental rates to remain about the same in 2025 as in 2024.

A breakdown on the *Purdue/CME Group Ag Economy Barometer* August results can be viewed at <https://purdue.ag/barometervideo>. Find the audio podcast discussion for insight on this month's sentiment at <https://purdue.ag/agcast>. [Download report \(pdf\)](#)