

# 4-H FAMILY RESOURCE GUIDE

Johnson County  
Franklin, Indiana



INSPIRE KIDS TODAY,  
GROW **TRUE LEADERS** OF TOMORROW



Extension - 4-H Youth  
Development



# TABLE OF CONTENTS

03	WHAT IS 4-H
05	HOW TO JOIN
06	ONLINE REGISTRATION
07	CLUB INFORMATION
10	PROJECTS
12	4-H DEFINITIONS
13	PEOPLE IN 4-H
15	4-H PARENTS
17	FREQUENTLY ASKED QUESTIONS

THE INDIANA 4-H YOUTH DEVELOPMENT MISSION IS TO PROVIDE REAL-LIFE EDUCATIONAL OPPORTUNITIES THAT DEVELOP YOUNG PEOPLE WHO WILL HAVE A POSITIVE IMPACT IN THEIR COMMUNITIES AND THE WORLD.

INDIANA 4-H YOUTH DEVELOPMENT STRIVES TO BE THE PREMIER, COMMUNITY-BASED PROGRAM EMPOWERING YOUNG PEOPLE TO REACH THEIR FULL POTENTIAL.

# WHAT IS 4-H?

## INDIANA 4-H HISTORY

4-H began more than 100 years ago, and has since grown into the largest youth development program in the nation. 4-H prepares young people to be leaders in their community and around the world through hands-on experiences alongside their peers and caring adults. Backed by a network of more than 6 million youth, 540,000 adult volunteers, 3,500 professionals, and more than 60 million alumni; 4-H delivers research-based programming around positive youth development. 4-H is delivered through America's 109 land-grant universities and the Cooperative Extension Service - reaching every corner of our nation. In Indiana, 4-H can be found in all 92 counties as delivered through Purdue Extension.



**4-H welcomes young people of all beliefs and backgrounds, empowering them to create positive change in their communities.**

Indiana 4-H began in Hamilton County in 1904. On April 9, 1904, John Haines, superintendent of Hamilton County Schools, held a meeting for all boys interested in learning to grow corn. Mr. Haines is thus credited with planning the first junior club in Indiana. The record states, "Mr. Haines visited the projects, held two instruction meetings, and his members exhibited at the end of the year." The first 4-H club projects (market hogs) were exhibited at the Indiana State Fair in 1915. The first 4-H camp in Indiana was held near Evansville in 1922 with 840 youth and 150 leaders in attendance.



# WHY SHOULD I JOIN 4-H?

## 4-H OPPORTUNITIES

4-H members can take part in short-term specific interest workshops that focus on anything from robotics to food science! 4-H members also have access to numerous scholarships, educational opportunities, and can build life skills through community involvement. Most of all, 4-H is real life experiences which are exemplified by our motto, "Learn By Doing".

### ADDITIONAL OPPORTUNITIES FOR INVOLVEMENT

- Community Clubs
- After-School Programs
- School Enrichment
- Workshops
- SPARK Clubs
- Day Camps
- Volunteering
- Special Programs

## 4-H TRIPS

Youth will have an opportunity to register for trips such as:

- **Camps** - during camp 4-H members participate in activities such as boating, swimming, crafts, and more!
- **4-H Round-Up** - 4-H members can explore a variety of careers on the Purdue University campus.
- **4-H Academy** - is held at Purdue University where participants can learn about science careers in a hands-on way!
- **Citizenship Washington Focus** - this is an exciting experience for 4-H members to visit the nation's capital.

## WINNING 4-H PLAN

4-H welcomes all youth. We strive to make reasonable accommodations for youth with disabilities to participate at all levels of our 4-H program. Contact 4-H Extension Educator Heather Dougherty at [hdougher@purdue.edu](mailto:hdougher@purdue.edu) to set up a meeting to have a discussion on creating a winning 4-H plan with the 4-H member. Accommodations are specific to the individual.



## HOW DO I JOIN?

4-H enrollment opens on October 1 every year.

Enroll online at [v2.4honline.com](http://v2.4honline.com)

Interested individuals can visit [v2.4honline.com](http://v2.4honline.com) to create a profile, select a club(s), and sign up for projects. For help selecting a club check out the next section! Returning members will log into your 4HOnline account, register for the upcoming year, and make any necessary changes.

The 4-H program is open to any youth in grades 3-12 and has a \$25.00 enrollment fee. Mini 4-H is available to any youth in grades k-2 and there is no fee to participate. If the fees pose a hardship please contact the Extension Office for a scholarship request.

4-H SLOGAN  
LEARN BY DOING

4-H MOTTO  
TO MAKE THE BEST  
BETTER

4-H COLORS  
GREEN & WHITE

4-H EMBLEM  
THE NATIONAL  
4-H EMBLEM IS A  
FOUR-LEAF CLOVER WITH  
THE LETTER H IN EACH  
LEAF.



**Johnson County 4-H on the web**  
**[extension.purdue.edu/johnson](http://extension.purdue.edu/johnson)**

# ONLINE REGISTRATION

## What's the difference between 4HOnline and FairEntry online systems?

4HOnline is our online enrollment system for all youth who enroll in the 4-H program. The current web address for this system is: [v2.4honline.com](http://v2.4honline.com). In 2020 we moved to the 2.0 version. It is a bit different than the previous version. 4-H enrollment opens on October 1 each year. The 4HOnline system collects our enrollment fees and allows you to sign up for your 4-H projects. Members will also use their 4HOnline profile to submit scholarships and register for events, programs and trips. Projects you're enrolled in, club membership, and your contact information are also stored in this system. At any time, you can log into your 4HOnline profile to confirm what you've enrolled in and update personal information.

FairEntry is a system we use to help organize the 4-H Fair, print exhibitor labels, and make show bills. FairEntry tells us exactly what projects will be exhibited at the fair. The FairEntry system opens early June and closes July 1. All members exhibiting at the fair have to log in to FairEntry and sign-up for the projects they are bringing to the fair. Livestock exhibitors will need to sign up their animals for their show classes.

4HOnline and FairEntry do save your information and profiles, making it easier for returning members! Members can also add or drop projects every year.

If you need any help, or have difficulties with 4HOnline or FairEntry please do not hesitate to contact our office. We are here to help!!





# WHAT CLUB IS RIGHT FOR ME?

4-H members can be in one or as many clubs as they wish! Clubs provide the opportunity for face-to-face project review or questions, community service, program updates, and much more. Club meeting attendance is not required to be in 4-H but we strongly encourage our members to attend their club meetings.

All 4-H clubs will pass along important program updates. However, some are special interest and county-wide clubs. County-wide clubs include, dog, goats, horse & pony, lamb, poultry, rabbits, robotics, show stock, shooting sports, sportfishing, swine, and tractor. If you are interested in any of these projects it is suggested you enroll in the corresponding club. County-wide, project specific clubs will provide further education for each specified project.

A great way to choose a club is to find out if you have any friends that are involved in 4-H and find out what club they love!

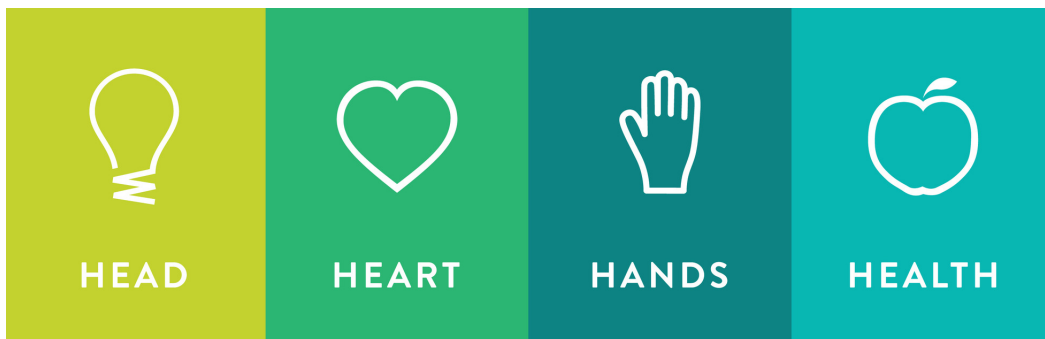
PICK A CLUB THAT FITS YOUR SCHEDULE



PICK A CLUB THAT FITS YOUR INTERESTS



PICK A CLUB THAT IS CLOSE TO HOME OR SCHOOL



# 4-H CLUBS

Following list contains one leader for each club.  
Most clubs have multiple leaders. Contact the  
office for more information.

**CENTER GROVE AREA**  
**Bargersville Blue Ribbon**  
Kim Robards  
317-422-0875  
Kimberly.robards@yahoo.com

**Bright Futures**  
Warren McDonald  
317-407-8158  
warren@grayseed.com

**Hoosier Hotshots**  
Barbara Dunn  
317-902-0015  
bdunn48@gmail.com

**FRANKLIN AREA**  
**Awesome Achievers**  
Jean Fundenberger  
317-340-4728  
jeanannfun@gmail.com

**Creekside Cougars**  
Kim Roberts  
317-422-5977  
kim@findleyauctioneers.com

**Country Friends 4-H Club**  
Megan Graves  
317-736-6576  
gravesj88@yahoo.com

**Hopewell Boys & Girls**  
Charlie & Becky Canary  
317-736-6874  
canfarm@embarqmail.com

**Jo Co Helping Hands**  
Diana & Dave Henderson  
317-474-0706  
diana0995@live.com

**Power of Youth**  
Roxane Chadwell  
317-294-0952  
trchadwell@comcast.net

**FRANKLIN AREA**  
**Shiloh Mix 'N Match**  
Phyllis Kasting  
317-736-9542  
pakasting@gmail.com

**Union Township Boys & Girls**  
Emily Martin  
765-606-4324  
jemartin04@sbcglobal.net

**INDIAN CREEK SCHOOL AREA**  
**Bravehearts 4-H Club**  
Becky, Codi Morrison  
317-752-1707  
rebmor1974@gmail.com  
cmariah333@hotmail.com  
317-752-0825

**Hensley Twp. 4-H Club**  
Nancy, Delbert & Katie Teeters  
317-878-4594  
Cowgirl41756@embarqmail.com

**Nineveh Clover Rovers**  
Angel Barger  
317-294-7763  
abargerot@aol.com

**GREENWOOD AREA**  
**Thundering Herd**  
Isabel Hawkins  
317-627-6320  
imrodrig@yahoo.com

**WHITELAND AREA**  
**Clover Power**  
Jo Ellen Lengacher  
317-260-6169  
klengacher@att.net

**Clover 4-H**  
Lea Shelton  
317-508-0212  
las1989@embarqmail.com



# 4-H CLUBS

## COUNTY WIDE CLUBS

### 4-H Tractor Club

Amy Spurgeon  
317-405-7349  
amy.spurgeon.96@gmail.com

### Johnson County 4-H Goat Club

Beth Goeb  
317-474-0011  
mgfarms2@gmail.com

### Johnson Co. 4-H Lamb Club

Kathy Harrell  
317-730-6670  
j.r.harrell@att.net

### Johnson County 4-H Shooting Sports

Samantha Morrison  
317-474-8933  
samanthadmorrison@gmail.com

### Johnson County 4-H Sport Fishing Club

Thomas McCann  
317-407-7437  
mccanntmkm@gmail.com

### Johnson County 4-H Swine Club

Kim & Chad Robards  
317-422-0875  
Kimberly.robards@yahoo.com

### Johnson County Beaks N Bills

Angie Gibbs  
317-560-3603  
agibbs@ics-charter.org

### Johnson County Rabbiteers

Shaun & Melinda Farmer  
317-474-8794  
shaunandmelindafarmer@gmail.com

### Johnson County Hoofprints Horse & Pony Club

Stephanie Dunn  
317-313-1445  
stephaniejaneg7@hotmail.com

### Johnson County Junior Leaders

Jeff Beaman  
317-736-9356  
jbeaman66@yahoo.com

### Johnson County Mini 4-H Clovers

Barbara Souchon  
317-450-0388  
bsouchon@yahoo.com

### Paw Pounders Dog Club

Jesse McKinney  
317-777-0757  
jesse@jessemckinney.com



4-H'ers are 2X more likely to participate in STEM activities outside of school\*



4-H'ers are 4X more likely to contribute to their communities\*



4-H'ers are 2X more likely to make healthier choices.\*

## MORE THAN 60 PROJECTS!

There is no limit to the number of projects youth can sign up for, but start slow. We suggest with starting out with one or two your first year.

# 4-H PROJECTS

Add or change projects in 4HOnline by May 15!

Aerospace  
Animal Posters  
Arts & Crafts  
Auto/Truck  
Beekeeping  
Bicycle  
Cake Decorating  
Cupcake  
Decorating  
Child Development  
Collections  
Computer  
Consumer Clothing  
Crops  
Do Your Own Thing  
Electric  
Entomology  
Fashion Revue  
Finance  
Floriculture  
Foods

Forestry  
Garden  
Genealogy  
Geology  
Health  
Home Environment  
Indiana Heritage  
Junior Leaders  
Microwave  
Cooking  
Photography  
Robotics  
Scrapbook  
Sewing  
Shooting Sports  
Small Engines  
Sports  
Sportfishing  
Soil & Water  
Science  
Tractor

Vet Science  
Weather  
Wildlife  
Woodworking



Animal/livestock projects include:

Aquatic Science  
Beef  
Cat  
Dairy  
Dog  
Goat  
Horse & Pony  
Poultry  
Rabbit  
Sheep  
Small Animal  
Swine





# Mini 4-H

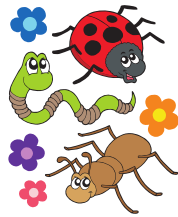
Grades K-2

Free to participate

## Mini 4-H Projects



Arts & Crafts



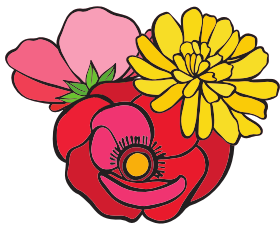
Bugs



Collections



Cookie Decorating



Flowers



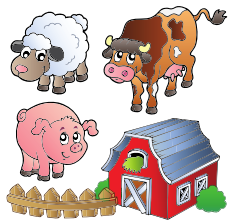
Foods



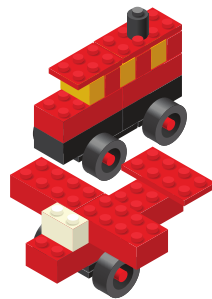
Forestry



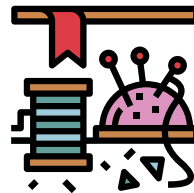
Horse & Pony



Livestock



Models



Sewing



Small Animals

### Johnson County Mini 4-H Clovers

Mini 4-H Clovers club meets every other month at the Jo. Co. Fair Grounds, unless otherwise noted. Parent meeting typically in January. Club meetings are held in Feb, April, June. Mini Day camp is in June with the Fair in July!

Club Leaders: Barbara Souchon, Amy Dougherty, Heather Polesel



Wildlife

# 4-H DEFINITIONS

## **4-H Enrollment**

- Each 4-H member enrolls online at the beginning of the 4-H year to join a 4-H club. The 4-H projects to select for the year are listed on our website as well.

## **4-H Club**

- A 4-H Club is recognized as at least five eligible youth from at least three families that have completed the annual 4-H enrollment process. A 4-H club has by-laws, a constitution, club officers, and abides by Indiana 4-H policies.

## **4-H Handbook**

- The book which lists the Johnson County rules for every project exhibit. A new book is published annually. It is very important that all 4-H families read and are familiar with book available in January each year.

## **Project Manuals**

- 4-H member and leader guides are typically written by university specialists and serve as suggestions of areas to study in your 4-H projects.

## **Record Sheets**

- Form submitted each year for project completion. All completed projects are listed on the same form.

## **Newsletter - Clover Connection**

- The County 4-H newsletter, Clover Connection, is emailed to every 4-H family. This gives information about county level 4-H meetings and activities offered to 4-H members, leaders, and parents. For most events, this will be your only source of information.

## **Exhibition**

- Exhibition in 4-H is the culmination of 4-H project work, often held in conjunction with the County 4-H Fair . Each project submitted for exhibition is evaluated on the degree to which it meets current year project requirements.

## **Completion**

- Completion in 4-H is achieved when a 4-H member enrolls in 4-H, selects and prepares a project, completes project manual activities and submits a finished record sheet of his or her accomplishment.

# 4-H

# DEFINITIONS

## PEOPLE IN 4-H

### Local Level

#### **4-H Member**

- Anyone in grades 3-12 who participated in a local 4-H group or activity.

#### **4-H Club Leader**

- A volunteer who is responsible for the organizational part of the club.

#### **Activity Leader**

- A volunteer who is responsible for organizing and conducting special club activities.

#### **Junior Leader**

- A 4-H member who is in grades 7-12 and is willing to assume additional leadership and mentoring responsibilities within the 4-H program.

#### **Parents or caregivers**

- Parents are very important to the success their children will have in the 4-H Program. Parents are encouraged to attend monthly meetings and project workshops with their children. All countywide events are open and parents are encouraged to attend.

#### **4-H Ambassadors**

- Youth in grades 8-12 who help promote the 4-H program.

#### **Project Resource Leader**

- Adult Volunteer who agreed to share their knowledge of a specific project.

### County Level

#### **4-H Council**

- This is the policy-making group, as well as the private funding source for a number of county-level 4-H programs including the County Fair

#### **Fair Board**

- A group of volunteers that are voted into their position by the members of the Johnson County Fair Board Association. These volunteers are responsible for putting on the county fair each year and handling rentals of the grounds throughout the year.

#### **Extension Board**

- The County Extension Board is the advisory and advocacy body of the overall Purdue University Cooperative Extension Service in Johnson County, and consists of members representing the citizens of Johnson County, Indiana.

#### **County Extension Director**

- Provides overall leadership to the county Extension program areas.

#### **Extension Educators**

- They are the professionals who guide, teach, and administer the Extension Programs. They are staff members of Purdue University and Johnson County Government

#### **4-H Youth Development Extension Educator**

Represents Purdue University Extension as the county-based professional responsible for the day-to-day operations and decisions of the county 4-H Youth Development Program. He or she helps interpret 4-H policies and works directly with volunteers in the development of the county 4-H program.

# 4-H

# DEFINITIONS

## PEOPLE IN 4-H

### State Level

#### **Purdue University**

- Purdue is a land-grant university that has the responsibility for taking education to the people of the state. The 4-H Youth Development Program is part of the directive in the State 4-H Office house in the College of Agriculture.

#### **Program Leader**

- The State 4-H Youth Development Program Leader has the responsibility for 4-H programming at the state level.

#### **State 4-H Specialists**

- State Specialists have responsibility for the 4-H Youth Development Program on a statewide basis. Each specialist is responsible for a specific part of the total 4-H Program. They are based at Purdue University and are under the direction of the State 4-H Youth Development Program Leader.

#### **Indiana 4-H Foundation**

- This nonprofit organization works to provide additional resources for the 4-H Program. They sponsor scholarships, fund county and state programs, finance the State 4-H Volunteer recognition program, and support educational awards trips for outstanding youth on the state level. Forms for donations are available at the County Extension office. They also sponsor the 4-H license plate program. Contact the Extension office for information about license plates for your vehicles.

### National Level

#### **National Institute of Food and Agriculture**

- A federal agency within the United States Department of Agriculture (USDA) - is part of USDA's Research, Education, and Economics (REE) mission area. The agency administers federal funding to address the agricultural issues impacting people's daily lives and the nation's future.

#### **National 4-H Council**

- Cooperates with local and state 4-H programs as it provides funding for national initiatives. Located in Washington, D. C.



# 4-H PARENTS

## How Can Parents Help?

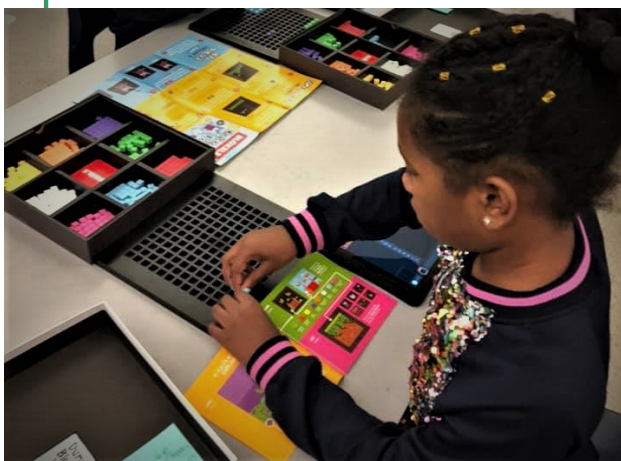
Parents can be encouraged to share their different talents, means and available time with the 4-H program. Not all people do the same thing well. It takes some analysis to find who can and will do certain tasks. For example, the parent will never appear in a public meeting, but may be willing to build a booth or floats, etc.

The most successful 4-H members have the interest and support of their parents or another caring adult. Often parents are willing to help but are not sure how, when or where they may get involved. Below are some suggestions for how parents can support 4-H members at home (1-9) and beyond (10-14). Share these suggestions with other parents of 4-H members so they are aware of and understand the ways to help. If you think of others, do not hesitate to add to the list.

1. Learn about 4-H, what it stands for; how it operates; how it is funded.
2. Advise your child in selecting 4-H projects.  
Help your child understand how many projects will be reasonable to complete in a given year.
3. Show your interest in and enthusiasm for the projects selected. Find out what is suggested for the members to do and learn.
4. See that when a project is started, it is also completed.
5. Encourage your 4-H member when they succeed and even more when they fail. Help them see progress achieved and knowledge gained; not just the end result.
6. Be an example! Help your 4-H member be a good sport and appreciate the successes of others.
7. Stay informed about 4-H through information that comes to members of your family. Be a 4-H supporter in your community.
8. Make 4-H club work FAMILY work. Encourage youth to do their work and carry their own tasks to completion. Be their guide only.
9. Provide transportation to local meetings and county events in which your child and others of the club are interested. Or, provide refreshments for meetings or special functions. Don't wait to be asked, just volunteer to help!
10. Attend 4-H meetings and other special events.
11. Help your 4-H member find a way to participate in special events that interest them such as county contests, camps, fairs, displays, or shows.
12. Support your local 4-H volunteers. Get acquainted with them. Let them know you appreciate their efforts.
13. Offer your services to assist the local volunteers. You have knowledge and skills that are needed in 4-H.
14. If the need arises, help find local volunteers for your 4-H club. Several kinds of volunteers are needed: organizational, project and activity volunteers. Consider helping in one of these ways yourself. Applications are available in your local Extension office.

Remember that the real object of 4-H is to develop your children into outstanding, productive adults.

The way they do their activities and projects and conduct themselves at competitive events and meetings will help set work and character standards for the rest of their lives.





# FREQUENTLY ASKED QUESTIONS

## How do I know which projects to choose?

- Check out our project list and rules in the 4-H Handbook
- Find projects that relate to your child's interests
- Check out the Project Fair in November
- Ask friends that are in various projects
- Talk with your club leader
- Be sure to look at the projects on display at the Fair each year!

## How do I know what to do for my projects?

- 4-H handbook lists all the rules, requirements and guidelines for each project and the trade level/division
- Project Workshops - Time for hands-on learning and demonstration
- Project Leaders/Superintendents, Clubs, & Club Leaders - Provide guidance and support

## How do I exhibit my projects at the 4-H Fair?

In order to exhibit at the fair, the online enrollment must be completed. The projects must be chosen within the online enrollments. The projects must also be entered into FairEntry. The Judging Schedule in the 4-H Handbook outlines the dates & times in which the projects are due for delivery to the Johnson County 4-H Fairgrounds for the 4-H Fair.

# Purdue Extension *Johnson County*



Amy  
Spurgeon  
Program  
Assistant  
spurgeoa@purdue.edu



Cathy  
Cook  
Administrative  
Assistant  
cook334@purdue.edu

Heather  
Dougherty  
Johnson County  
4-H Educator  
hdougher@purdue.edu



**PURDUE EXTENSION – JOHNSON COUNTY**  
**484 N. MORTON ST FRANKLIN, IN 46131**  
**[www.extension.purdue.edu/johnson](http://www.extension.purdue.edu/johnson) 317-736-3724**

IT IS THE POLICY OF THE PURDUE UNIVERSITY COOPERATIVE EXTENSION SERVICE THAT ALL PERSONS HAVE EQUAL OPPORTUNITY AND ACCESS TO ITS EDUCATIONAL PROGRAMS, SERVICES, ACTIVITIES, AND FACILITIES WITHOUT REGARD TO RACE, RELIGION, COLOR, SEX, AGE, NATIONAL ORIGIN OR ANCESTRY, MARITAL STATUS, PARENTAL STATUS, SEXUAL ORIENTATION, DISABILITY OR STATUS AS A VETERAN. PURDUE UNIVERSITY IS AN AFFIRMATIVE ACTION INSTITUTION. THIS MATERIAL MAY BE AVAILABLE IN ALTERNATIVE FORMATS.

# IMPORTANT DATES

## 2021

### January

- 1 – OFFICE CLOSED - NEW YEAR'S DAY
- 12 – Junior Leader Meeting
- 15 – PREFERRED ENROLLMENT DEADLINE
- 18 – 4-H Council Meeting
- 18 – OFFICE CLOSED - MLK JR. DAY
- 25 – Scholarship application deadline
- 26 – Volunteer Training

### February

- 2 – New 4-H Family Night
- 9 – Junior Leader Meeting
- 15 – OFFICE CLOSED - PRESIDENT'S DAY
- 15 – 4-H Council Meeting
- 22 – Mini 4-H Meeting

### March

- 1 – Ownership deadline for Dogs
- 3 – 4-H Officer Training
- 9 – Junior Leader Meeting
- 13 – Cattle ID and Weigh-In
- 15 – 4-H Council Meeting

### April

- 2 – OFFICE CLOSED – GOOD FRIDAY
- 13 – Junior Leader Meeting
- 19 – 4-H Council Meeting
- 26 – Mini Clovers 4-H Club Meeting

### May

- 1 – Goat/Dairy Feeder Steer Weigh-in
- 8 – Sheep Weigh-in
- 11 – Junior Leader Meeting
- 15 – All livestock ID must be entered on 4HOnline.  
NO EXCEPTIONS.
- 15 – Project Add/Drop Deadline
- 18 – 4-H Council Meeting
- 25 – OFFICE CLOSED – MEMORIAL DAY
- 25 – Volunteer Training

### June

- 7 – Mini Clovers 4-H Club Meeting
- 8 – Junior Leader Meeting
- 9 – 11 – 4-H Camp
- 21 – 4-H Council Meeting
- 29 – 30 – Mini 4-H Day Camp

### July

- 1 – FairEntry & RECORD SHEETS DUE
- 3 – OFFICE CLOSED – INDEPENDENCE DAY
- 6 – Fair Set-Up, 4-H Council Meeting, Extension Board Meeting, Junior Leader Meeting– 5:00pm
- 12 – 16 – JUDGING WEEK - Check schedule

### August

- Indiana State Fair: August 6– 22
- 16 – 4-H Council Fair Evaluation Meeting

### September

- 6 – OFFICE CLOSED – LABOR DAY
- 14 – Junior Leader Kick Off
- 20 – 4-H Council Meeting

### October

- 1 – 4-H Enrollment Opens for 2021-22
- 12 – Junior Leader Meeting
- 18 – 4-H Council Meeting

### November

- 11 – OFFICE CLOSED – VETERANS DAY
- 16 – 4-H Council Meeting
- 25 – 26 – OFFICE CLOSED – THANKSGIVING

### December

- 20 – 4-H Council Meeting
- 23 – 24 – OFFICE CLOSED – CHRISTMAS!
- 31 – OFFICE CLOSED – HAPPY NEW YEAR!

Dates are subject to change, please refer to most recent correspondence.

# NOTES:

## Do you know...

1. The name of your club? \_\_\_\_\_
2. What is your club meeting schedule?  
\_\_\_\_\_  
\_\_\_\_\_
3. What projects are you taking this year?  
\_\_\_\_\_  
\_\_\_\_\_  
\_\_\_\_\_  
\_\_\_\_\_
4. When are your project workshops (if applicable)?  
\_\_\_\_\_  
\_\_\_\_\_  
\_\_\_\_\_

## Additional Notes: