

# 4-H Horse & Pony

Jasper County  
Record Sheet B  
Grade 4

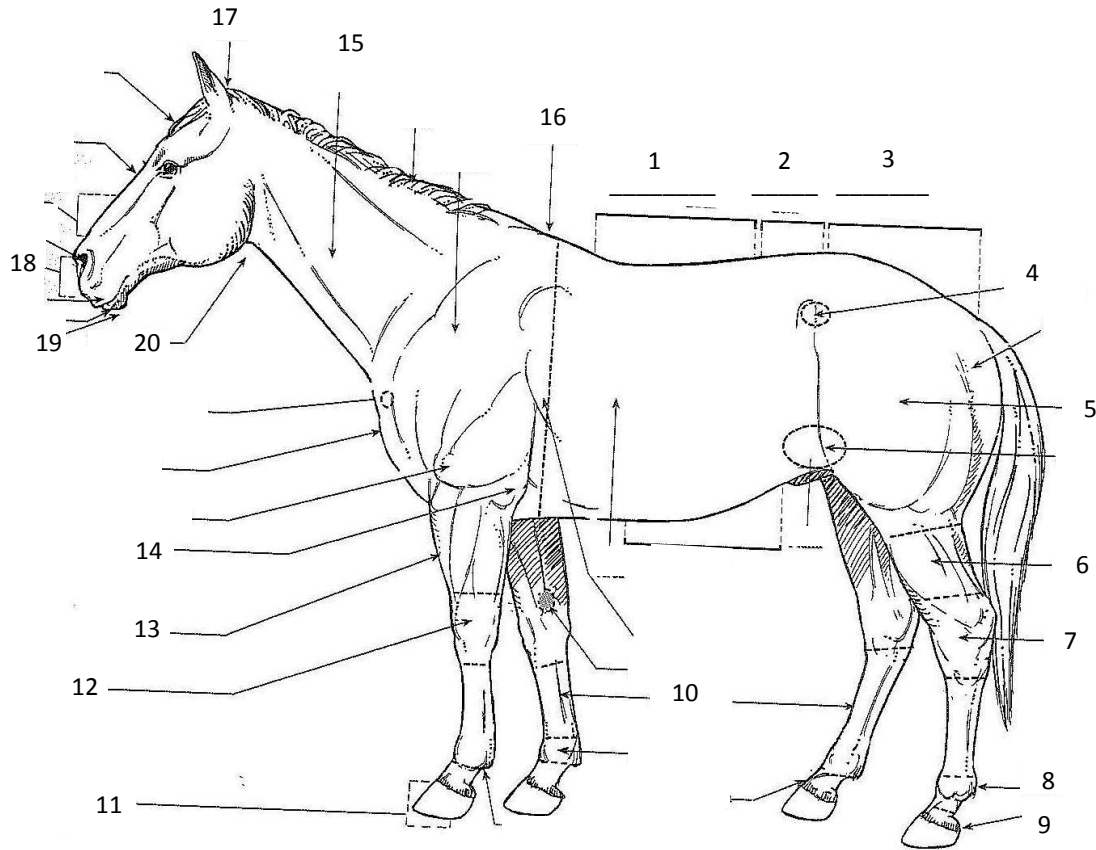
Name \_\_\_\_\_ 4-H Club \_\_\_\_\_

Leader Signature: \_\_\_\_\_

Fill In the Blanks with the correct answers:

1. Ticks are a problem to horses in many parts of the country. They are blood feeders and can carry several \_\_\_\_\_.
2. Ticks tend to prefer areas such as the base of the \_\_\_\_\_ and \_\_\_\_\_.
3. Two types of lice infest horses—the \_\_\_\_\_ and the \_\_\_\_\_.
4. Common symptoms of lice include \_\_\_\_\_, \_\_\_\_\_, and other signs of \_\_\_\_\_; patches of skin with no hair; and generally unthrifty appearance.
5. These flies have a particularly painful bite: \_\_\_\_\_ and \_\_\_\_\_ flies.
6. Fly control is best prevented by \_\_\_\_\_ and \_\_\_\_\_ removal and eliminating areas for breeding.
7. \_\_\_\_\_ is caused by a fungal infection of the skin. The lesions that form are circular and can spread quickly.
8. Treatment of a light infection of ringworm can be done by keeping the area clean and dry and applying tincture of \_\_\_\_\_ daily.
9. Rain Rot is a bacterial infection that is more prevalent in \_\_\_\_\_ or \_\_\_\_\_ environments and when horses have long hair coats.
10. When a horse has rain rot, all grooming equipment should be cleaned thoroughly with a \_\_\_\_\_ solution.
11. Mites tend to burrow under the skin and can cause \_\_\_\_\_, \_\_\_\_\_, \_\_\_\_\_, loss of hair, crusty skin lesions, and general hair loss.

**Write in the correct part of the horse with the appropriate number:**



- 1. \_\_\_\_\_
- 2. \_\_\_\_\_
- 3. \_\_\_\_\_
- 4. \_\_\_\_\_
- 5. \_\_\_\_\_
- 6. \_\_\_\_\_
- 7. \_\_\_\_\_
- 8. \_\_\_\_\_
- 9. \_\_\_\_\_
- 10. \_\_\_\_\_

- 11. \_\_\_\_\_
- 12. \_\_\_\_\_
- 13. \_\_\_\_\_
- 14. \_\_\_\_\_
- 15. \_\_\_\_\_
- 16. \_\_\_\_\_
- 17. \_\_\_\_\_
- 18. \_\_\_\_\_
- 19. \_\_\_\_\_
- 20. \_\_\_\_\_