

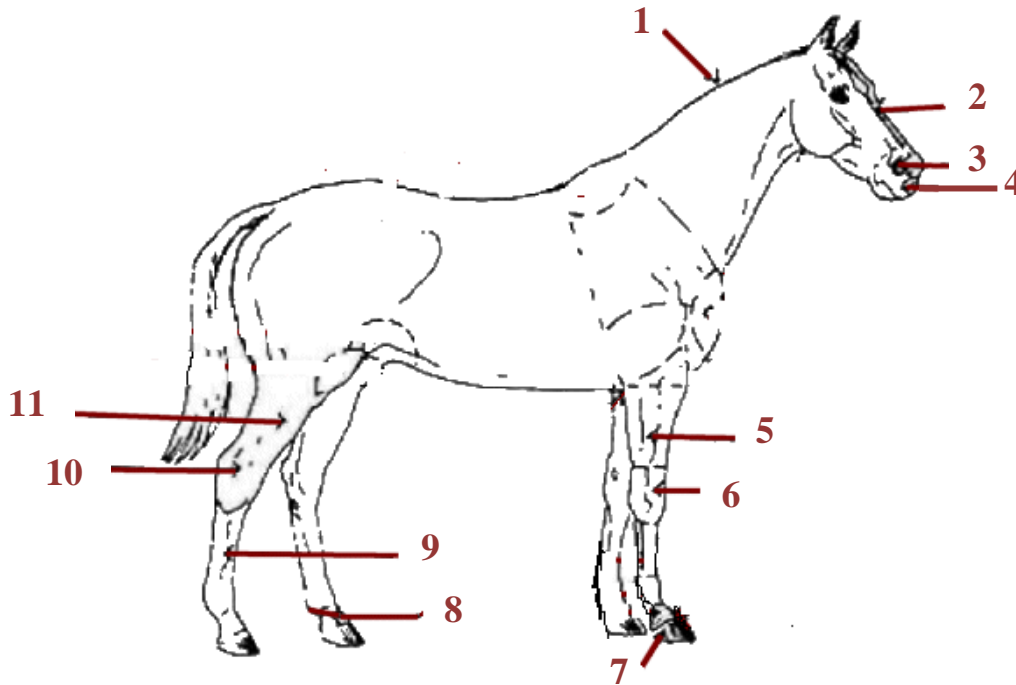
# 4-H Horse and Pony Project

Jasper County  
Record Sheet A  
Grade 4

Name: \_\_\_\_\_ 4-H Club: \_\_\_\_\_

Leader Signature: \_\_\_\_\_ Date: \_\_\_\_\_

## 1. Parts of a Horse



Place the number from the above picture with the matching body part.

\_\_\_ Cannon

\_\_\_ Forehead

\_\_\_ Knee

\_\_\_ Crest

\_\_\_ Gaskin

\_\_\_ Muzzle

\_\_\_ Fetlock

\_\_\_ Hock

\_\_\_ Nostrils

\_\_\_ Forearm

\_\_\_ Hoof

2. Horse Types and Uses. Fill in the blank.

\_\_\_\_\_, \_\_\_\_\_, \_\_\_\_\_ are the three primary breeds used for racing.

\_\_\_\_\_ horses were originally developed for working livestock on ranches and for short distance racing

The \_\_\_\_\_ horse is best known for its smooth, ground-covering, easy-traveling gaits.

Three common pony breeds are \_\_\_\_\_, \_\_\_\_\_ and \_\_\_\_\_.

What are the four qualities that a good hunter horse should have?

1. \_\_\_\_\_
2. \_\_\_\_\_
3. \_\_\_\_\_
4. \_\_\_\_\_

The \_\_\_\_\_ horse was originally developed for farming and to transport freight across our nation.

3. Match the coat colors with the correct description

- |          |  |
|----------|--|
| Bay      | Has irregular patches in more than one color   |
| Paint    | Most so-called white horses are actually this color.   |
| Gray     | This horse is a mixture of red and yellow/brown  |
| Brown    | The body color can range from light yellow to bright copper.                                       |
| Palomino | This color of horse is made up of both brown and black hair and the mane and tail are always dark. |