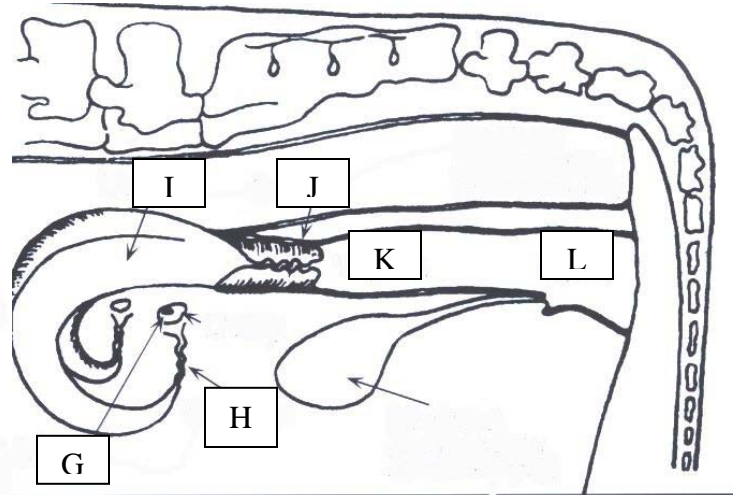
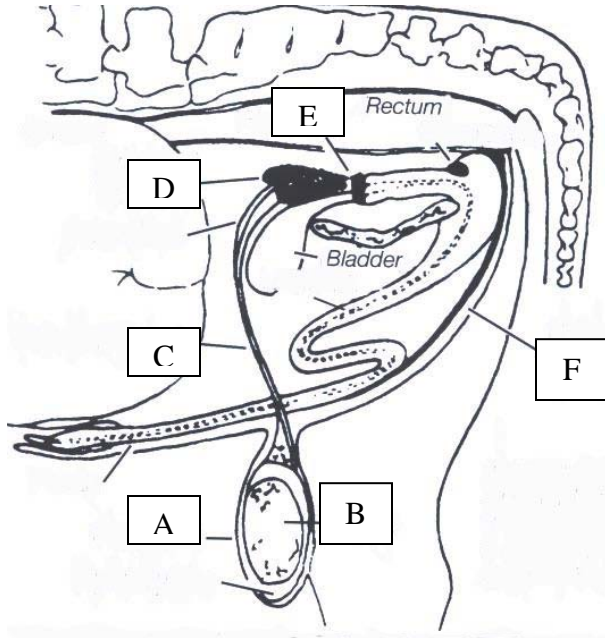




# 4-H Dairy

Name: \_\_\_\_\_ 4-H Club \_\_\_\_\_

**Reproductive System:** Please write the correct name of the dairy reproductive system on the line provided for the correct letter, plus identify which picture is the female system versus the male.



\_\_\_\_\_ Reproductive System

A. \_\_\_\_\_  
 B. \_\_\_\_\_  
 C. \_\_\_\_\_  
 D. \_\_\_\_\_  
 E. \_\_\_\_\_  
 F. \_\_\_\_\_

\_\_\_\_\_ Reproductive System

G. \_\_\_\_\_  
 H. \_\_\_\_\_  
 I. \_\_\_\_\_  
 J. \_\_\_\_\_  
 K. \_\_\_\_\_  
 L. \_\_\_\_\_

**Careers, Processing, Products, Pricing - Fill in the blanks:** Please write the correct answer on the line provided to correctly complete the statement.

1. What are the two types of mastitis and how are they different?

\_\_\_\_\_

\_\_\_\_\_

\_\_\_\_\_

2. What components in milk determine milk prices?
  - A. \_\_\_\_\_
  - B. \_\_\_\_\_
  - C. \_\_\_\_\_
3. If you were to take a career in agribusiness, what would it be and why? \_\_\_\_\_  
\_\_\_\_\_
4. How long should it take for most cows to milk out? \_\_\_\_\_
5. If you were to take a career in agribusiness, what would it be and why? \_\_\_\_\_  
\_\_\_\_\_
6. When preparing for a career in the livestock industry one should take what science courses? \_\_\_\_\_ Plus their mathematics courses should include \_\_\_\_\_  
\_\_\_\_\_
7. What are the four major areas of career groups in Animal Sciences?
  - A. \_\_\_\_\_
  - B. \_\_\_\_\_
  - C. \_\_\_\_\_
  - D. \_\_\_\_\_
8. What organization regulates the dairy industry? \_\_\_\_\_
9. The prevention of bacteria from growing in milk occurs in what temperature range? \_\_\_\_\_
10. What is the difference in the aging process of mild cheddar cheese versus sharp cheddar cheese? \_\_\_\_\_
11. What are three characteristics milk has that create challenges in marketing.
  - A. \_\_\_\_\_
  - B. \_\_\_\_\_
  - C. \_\_\_\_\_

**Matching Mammary Health: Please write the letter of the definition with the matching word related to mammary health.**

- |                      |  |
|----------------------|--|
| 1. _____ Clinical    | A. visible changes in the milk   |
| 2. _____ CMT         | B. no visible changes in the milk, udder or cow, but SCC are above normal      |
| 3. _____ Mastitis    | C. bulk samples to test for mastitis   |
| 4. _____ SCC         | D. inflammation or infection of the mammary gland                              |
| 5. _____ Subclinical | E. somatic cells in the milk, greater than 150,000 indicates mastitis problems |
| 6. _____ WMT         | F. quick and easy mastitis test done in the parlor                             |

Answers to these questions can be found in the "Dairy Resource Handbook" 4-H 127R