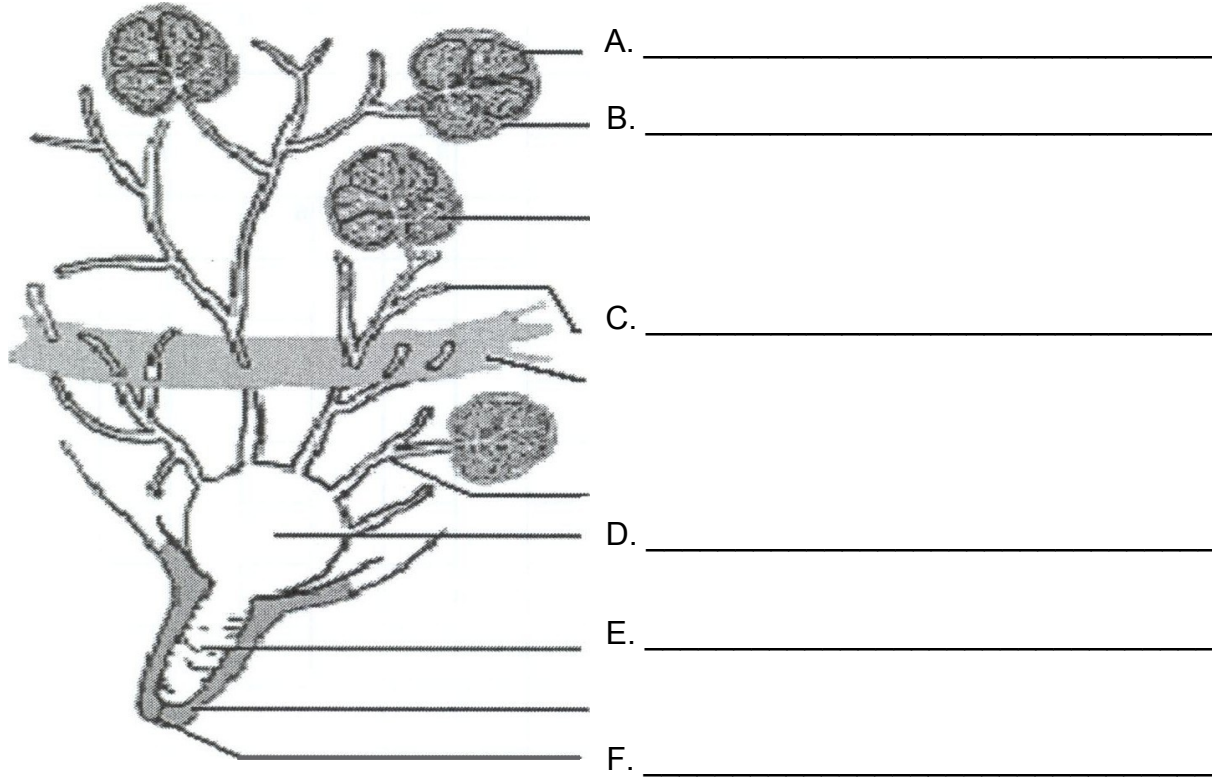


# 4-H Dairy

Jasper County  
Derived from Steuben  
County Record Sheet A  
Grade 7

Name \_\_\_\_\_ 4-H Club \_\_\_\_\_

**Part Identification: Please write the correct part from the anatomy of the mammary gland on the line provided**



## Careers, Processing & Production—Fill in the blanks:

**Please write the correct answer on the line provided to correctly complete the statement**

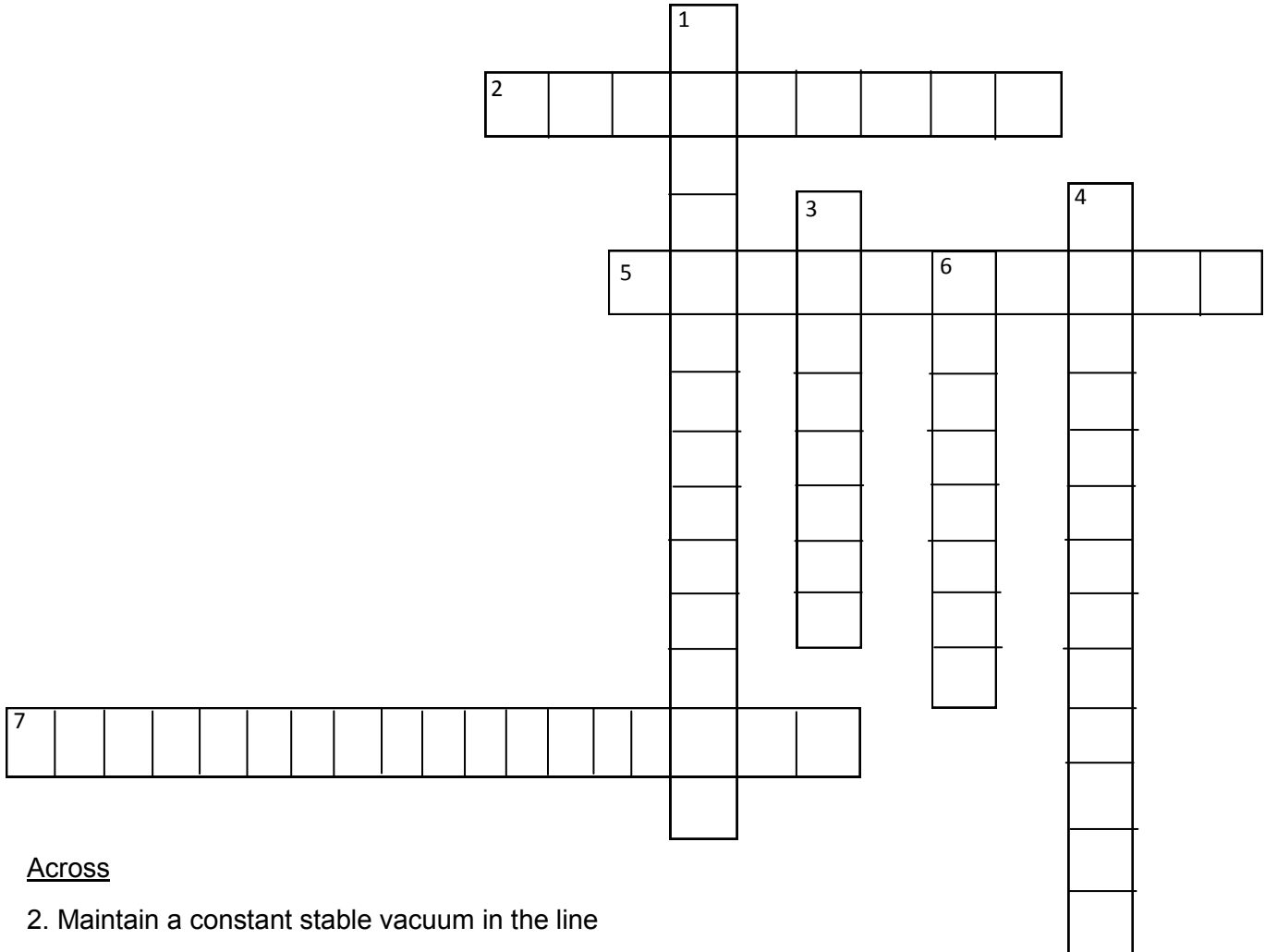
1. What is a career area for an individual who enjoys working with animals? \_\_\_\_\_
2. A career in agribusiness is where many people are needed to \_\_\_\_\_ the \_\_\_\_\_ and \_\_\_\_\_ needed in producing livestock.
3. People who assist and provide services to producers and consumers have a career in \_\_\_\_\_ and \_\_\_\_\_ agencies.
4. When preparing for a career, what is normally considered a basic requirement? \_\_\_\_\_
5. The characteristic of \_\_\_\_\_ is acquired through judging contests.
6. What is the FDA? \_\_\_\_\_

7. When milk is picked up at the farm a sample is pulled from the bulk tank to test for \_\_\_\_\_

8. What is Artificial Insemination (AI)? \_\_\_\_\_

9. Heating up of milk to kill any disease causing organisms is known as \_\_\_\_\_

10. What is whey? \_\_\_\_\_



Across

- 2. Maintain a constant stable vacuum in the line
- 5. Mechanical device that extracts and exhausts air from a system to create vacuum
- 7. Two systems consist of the manual system of the CIP system

Down

- 1. Proportion of the cycle that is in the milk phase versus the rest phase
- 3. Automatic air-vacuum valve that directs atmospheric air into hoses and chambers between the teat cup liner and the shell
- 4. Number of times the teat goes through the rest and milk phase
- 6. Part of the machine that is suspended from the cow and performs the milking operation and receives the milk