

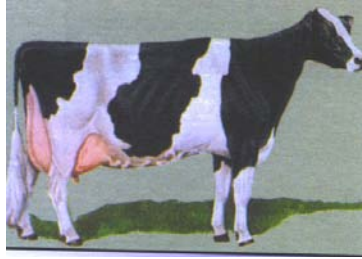


# 4-H Dairy

Jasper County  
B  
Grade 3

Name: \_\_\_\_\_ 4-H Club \_\_\_\_\_

**Identification:** Please write the breed name (Ayrshire, Brown Swiss, Jersey, Guernsey, Holstein, Shorthorn) on the line below the picture.



\_\_\_\_\_

\_\_\_\_\_

\_\_\_\_\_



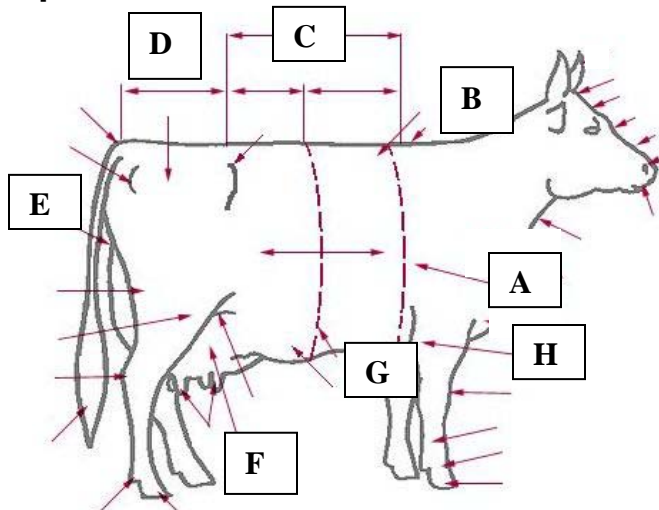
\_\_\_\_\_

\_\_\_\_\_

\_\_\_\_\_

**Part Identification:** Please write the correct part name (back, barrel, elbow, heart girth, rear udder attachment, rump, udder, withers) on the line provided with the correct letter.

- A. \_\_\_\_\_
- B. \_\_\_\_\_
- C. \_\_\_\_\_
- D. \_\_\_\_\_
- E. \_\_\_\_\_
- F. \_\_\_\_\_
- G. \_\_\_\_\_
- H. \_\_\_\_\_



**Care, Housing & Safety - Fill in the blanks: Please write the correct answer on the line provided to correctly complete the statement.**

1. If your calf is in a pen with one other calf, what size should the pen be?  
\_\_\_\_\_ feet X \_\_\_\_\_ feet
2. To stop the \_\_\_\_\_ of disease, new animals entering your herd should be isolated from the rest of the herd for \_\_\_\_\_ days.
3. Cows will commonly kick \_\_\_\_\_ and out to the \_\_\_\_\_.
4. \_\_\_\_\_ must be handled with care in the milking parlor.
5. To increase the level of safety when handling animals \_\_\_\_\_  
\_\_\_\_\_ is the key ingredient.
6. Generally \_\_\_\_\_ are housed individually from \_\_\_\_\_ to weaning to prevent disease \_\_\_\_\_ from none-to-nose contact.
7. There should be at least one \_\_\_\_\_ for every 15-20 \_\_\_\_\_ and it should be easily accessible.
8. Most animals are a creature of \_\_\_\_\_ and have a strong territorial instinct.

**Animal Care Word Search: Please use the word bank below to terms related to animal care in the puzzle below, circle or draw a line through the words in the puzzle.**

<p><b><u>Word Bank</u></b></p> <p><b>CARING</b> - treating others as you want them to treat you</p> <p><b>CHARACTER</b> - six pillars</p> <p><b>COMPETITION</b> - a positive tool used to develop important life skills</p> <p><b>FAIRNESS</b> - using the same rules or standards for everyone</p> <p><b>OTC</b> - medication sold at farm stores</p> <p><b>RECORDED</b> - important information about medication given to an animal should be</p> <p><b>RESPECT</b> - judging people on their merits or the good things they do</p> <p><b>VETERINARIAN</b> - check with before giving treatments to animal</p>
--

V Y S C H J G J X C I C Z P J  
 Y E S S Z W X Q H Y V O P Y C  
 H N T J E G H A Q C E M V R K  
 E D W E N N R P I P X P H E R  
 J F T I R A R B V E Y E L D J  
 P F R U C I Q I I R W T J I E  
 Z A J T P W N N A A G I T N E  
 C T E F K S W A A F V T C Z H  
 B R T G Z A I O R D H I E G R  
 D E D R O C E R F I C O P B Y  
 P M N S Y V S S O K A N S X W  
 G F Z H D H A R V Y B N E Q Z  
 N G O A F C Q A C F A U R V X  
 O T C P R A K J V E D V P W K  
 Z H F C B B J T B F L A A M T