

# 4-H Swine

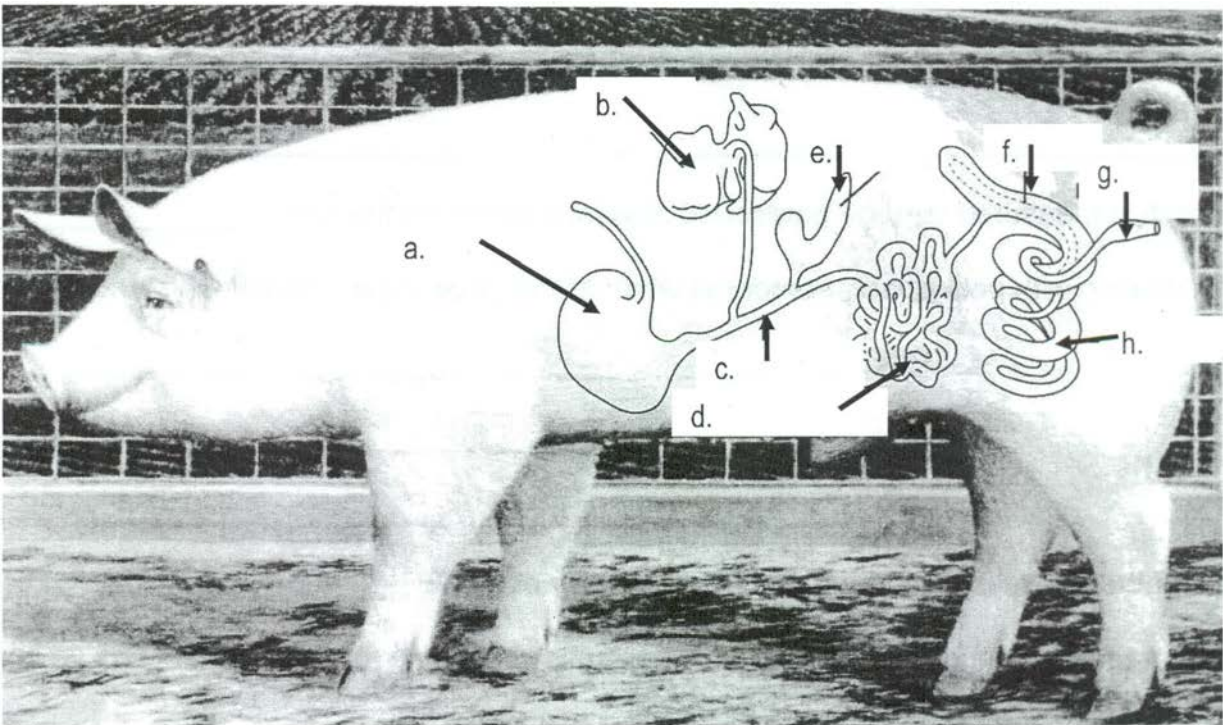
Name: \_\_\_\_\_ 4-H Club \_\_\_\_\_

1. List two advantages of participating in the 4-H swine project. \_\_\_\_\_  
\_\_\_\_\_  
\_\_\_\_\_
2. Why is adequate body capacity important? \_\_\_\_\_  
\_\_\_\_\_
3. The proportion of body parts is called \_\_\_\_\_
4. . Why should pork producers avoid using stress positive and stress carrier hogs? \_\_\_\_\_  
\_\_\_\_\_
5. Fat depth is measured through ultrasound at what location on the hog? \_\_\_\_\_
6. When dealing with pork quality standards what do the following abbreviations stand for?
  1. PSE: \_\_\_\_\_
  2. RFN: \_\_\_\_\_
  3. DFD: \_\_\_\_\_
7. Which of the above is considered the "ideal" quality of pork? \_\_\_\_\_
8. List two negative things that can happen when soils containing manure nutrients move into water. \_\_\_\_\_  
\_\_\_\_\_  
\_\_\_\_\_
9. Name five possible careers in the swine industry. \_\_\_\_\_  
\_\_\_\_\_

10. Match the industrial by-product with the pig part that it is made from, you may use each answer more than once:

- |              |                  |                            |
|--------------|------------------|----------------------------|
| Buttons      | Matches          | a. Blood                   |
| Crayons      | Pet Food         | b. Bones & Skin            |
| Glass        | Plastics         | c. Bone Meal               |
| Glue         | Plywood Adhesive | d. Dried Bones             |
| Fabric Dye   | Rubber           | e. Fatty Acids & Glycerine |
| Insecticides | Shoes            | f. Meat Scraps             |

11. Identify the parts of the pigs' digestive tract labeled on the picture below.



- |          |          |
|----------|----------|
| a. _____ | e. _____ |
| b. _____ | f. _____ |
| c. _____ | g. _____ |
| d. _____ | h. _____ |