



4-H Swine

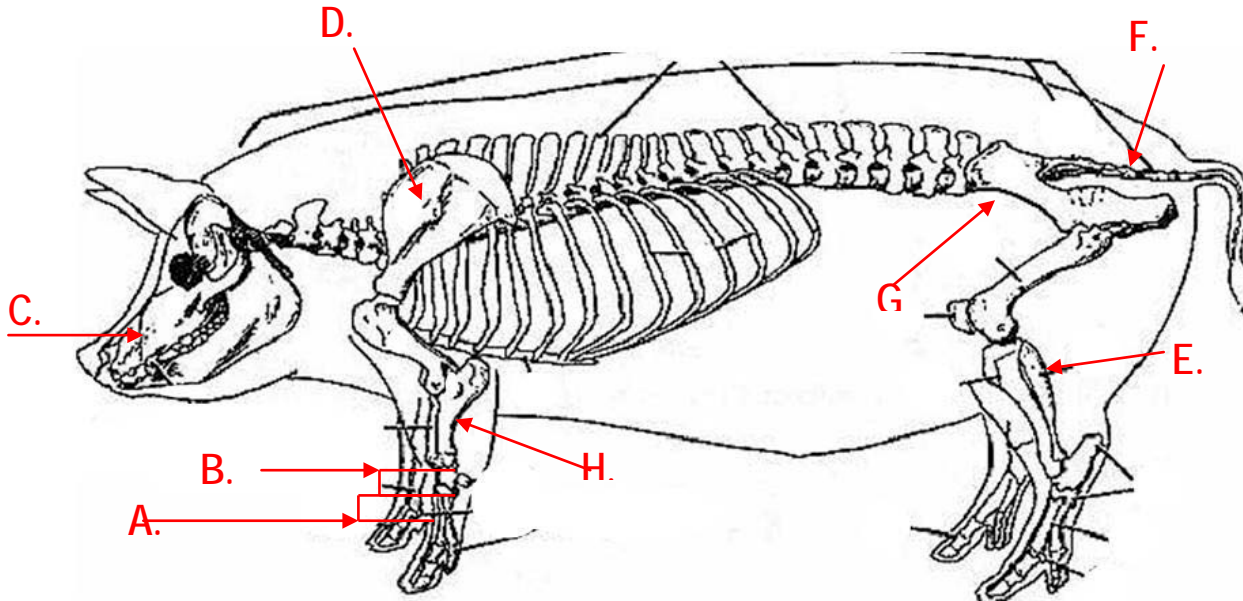
Jasper County
B
Grade 12

Name: _____ 4-H Club _____

1. Label the bones indicated on the pig skeleton below.

- a. _____
- b. _____
- c. _____
- d. _____

- e. _____
- f. _____
- g. _____
- h. _____



2. What are the six types of records that are important to keep in a swine enterprise on a day to day basis?

- a. _____
- b. _____
- c. _____

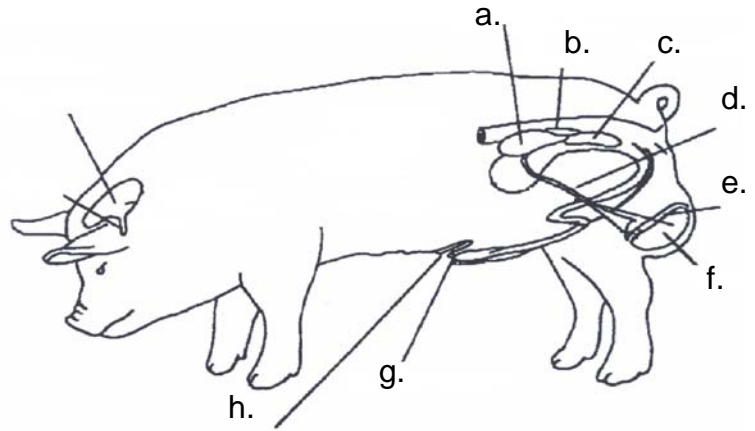
- d. _____
- e. _____
- f. _____

3. What is the number one reason for removing a sow from the herd? _____

4. Gilts should have at least _____ well-spaced functional teats to a _____.
5. Boars should be selected at least _____ months prior to breeding. Why? _____

6. Identify the parts of the reproductive tract of the male pig indicated below.

- a. _____
- b. _____
- c. _____
- d. _____
- e. _____
- f. _____
- g. _____
- h. _____



7. Genes are _____ and are responsible for _____.

8. The offspring receive _____ its genes from each parent.

- a. 25%
- b. 50%
- c. 75%
- d. 100%

9. The locus is: _____. At the same locus on _____ chromosomes are genes that affect the same trait.

10. What are the heritability estimates for the following swine traits?

- a. Backfat thickness: _____
- b. Days to 250 pounds: _____
- c. Carcass Quality: _____
- d. Feed Conversion: _____
- e. Loin eye area: _____