

# 4-H Swine

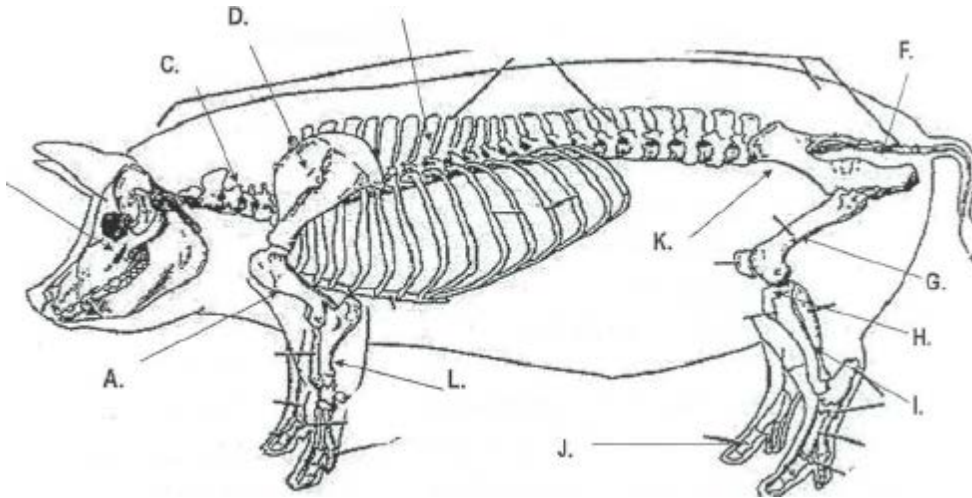
Jasper County  
Record Sheet A  
Grade 12

Name: \_\_\_\_\_ 4-H Club \_\_\_\_\_

1. List three breeds of swine that are considered maternal breeds. (known for their mothering ability) \_\_\_\_\_

2. Label the bones indicated on the pig skeleton below. Page 3-15

- |          |          |
|----------|----------|
| a. _____ | g. _____ |
| b. _____ | h. _____ |
| c. _____ | i. _____ |
| d. _____ | j. _____ |
| e. _____ | k. _____ |
| f. _____ | l. _____ |



3. What anatomical feature is utilized to determine the reproductive soundness of a gilt? \_\_\_\_\_

4. List five important characteristics to look for in an ideal breeding gilt. \_\_\_\_\_

5. When selecting replacement breeding gilts at 180 lbs, evaluate gilts for \_\_\_\_\_,

And \_\_\_\_\_.

6. Boars should be selected and purchased at \_\_\_\_\_ months of age, and at least \_\_\_\_\_

Months before intended breeding.

7. Which gland secretes luteinizing hormone (LH) and follicle stimulating hormone (FSH) \_\_\_\_\_

\_\_\_\_\_

8. Name three functions of the hypothalamus in the male pig in the reproductive process. \_\_\_\_\_

\_\_\_\_\_

\_\_\_\_\_

9. The location of a gene on a chromosome is called the \_\_\_\_\_

10. The drop in performance due to a decrease in a non-additive value resulting from mating related animals is

Called \_\_\_\_\_

11. What are the heritability estimates for the following swine traits?

Trait	Heritability
Average Daily Gain	
Carcass Length	
Litter Birth Weight	
Litter size born alive	
Loin Eye Area	
Soundness	
21 day Litter Weight	

12. What is the duration of ovulation in sows and gilts? \_\_\_\_\_

\_\_\_\_\_

13. What is the lifespan of sperm cells in the oviduct? \_\_\_\_\_

14. What procedure can be utilized to make artificial insemination more efficient? \_\_\_\_\_

\_\_\_\_\_

15. What type of environment should be maintained in the farrowing house? \_\_\_\_\_

\_\_\_\_\_

\_\_\_\_\_

16. Your new litter of pigs should be processed within 24 hours after birth. Processing may include the following

Steps:

a. \_\_\_\_\_

b. \_\_\_\_\_

c. \_\_\_\_\_

d. \_\_\_\_\_

e. \_\_\_\_\_

f. \_\_\_\_\_