

# 4-H Sheep

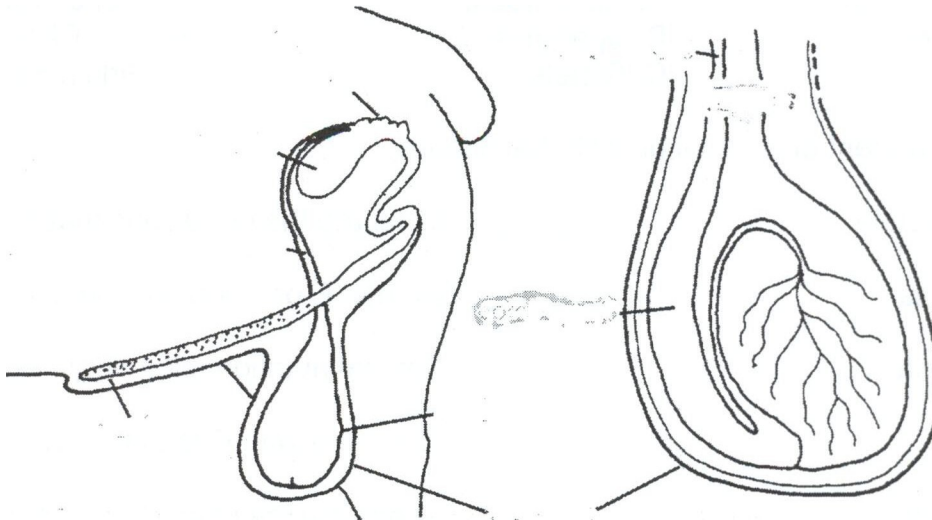
Jasper County  
Derived from Pulaski  
County Record Sheet A  
Grade 8

Name \_\_\_\_\_ 4-H Club \_\_\_\_\_

Leader Signature: \_\_\_\_\_

1. Find the genotype and phenotype of the following: Ram is an RR and the Ewe is an Rr.


2. Identify the male parts of the reproductive system:



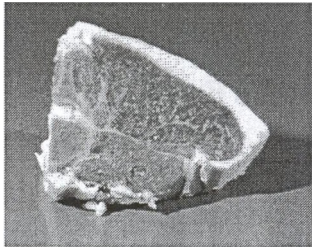
3. Creep feeds need to have \_\_\_\_\_ to \_\_\_\_\_ percent protein, while lambs that reach 50-60 pounds require \_\_\_\_\_ to \_\_\_\_\_ protein levels.

4. All sheep should have plenty of clean fresh \_\_\_\_\_ in front of them at all times.

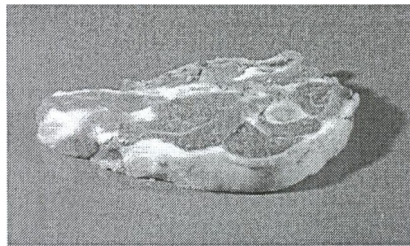
5. Make a list of items that you will need to bring with you to the fair for your sheep project:

_____	_____
_____	_____
_____	_____
_____	_____

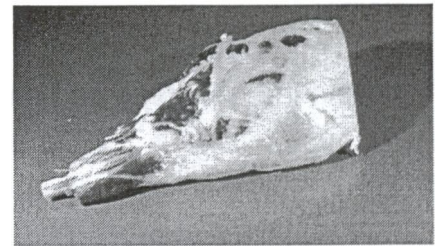
6. Identify the following cuts of lamb:



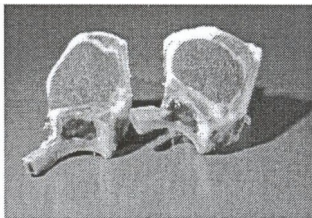
- A. Arm Chop
- B. Loin Chop
- C. Sirloin Steak



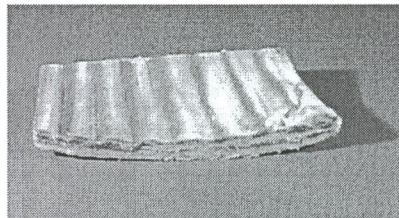
- A. Arm Chop
- B. Loin Chop
- C. Sirloin Steak



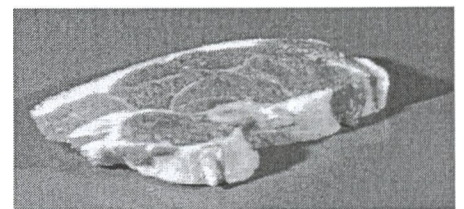
- A. Shoulder Roast
- B. Loin Roast
- C. Whole Leg



- A. French Rib Chop
- B. Sirloin Steak
- C. Arm Chop



- A. Rack Roast
- B. Spareribs
- C. Riblets



- A. French Rib Chop
- B. Loin Chop
- C. Sirloin Steak

7. Match the treatment or prevention with the disease:

- A. Enterotoxemia
- B. Coccidiosis
- C. Pneumonia
- D. Navel ill
- E. Sore Mouth
- F. Stiff Lamb
- G. Urinary Calculi
- H. Club lamb fungus

- \_\_\_\_\_ Eliminate the conditions that cause it
- \_\_\_\_\_ Vitamin E or selenium injections
- \_\_\_\_\_ Optimal nutrition, clean dry fleece
- \_\_\_\_\_ Vaccinate with Clostridium type D
- \_\_\_\_\_ Good balance of calcium to phosphorus
- \_\_\_\_\_ Drugs and feed additives help control
- \_\_\_\_\_ Vaccinate the flock
- \_\_\_\_\_ apply iodine and clean lambing areas

8. Meat from sheep older than 12 months is referred to as \_\_\_\_\_.

Answers to all the questions can be found in the "Sheep Resource Handbook" 4-H 194R