

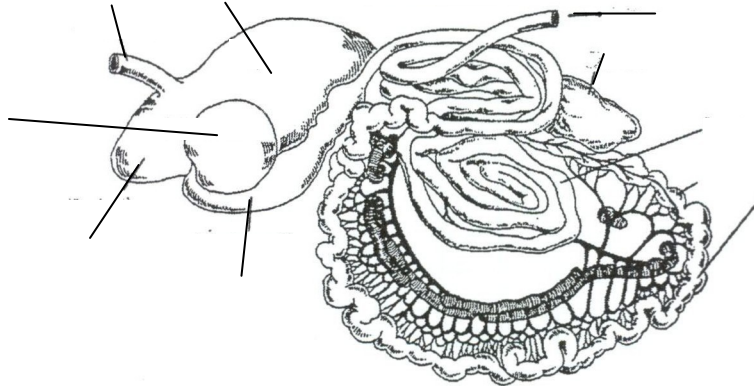
4-H Sheep

Jasper County
Derived from Pulaski
County Record Sheet B
Grade 7

Name _____ 4-H Club _____

Leader Signature: _____

1. Identify each part of the gastric system:



2. An average lamb will gain between _____ and _____ pounds each day if fed properly.

3. Describe how to properly put a sheep on it's rump?

4. Tell which month each of the following would normally occur in:

- _____ Change the marking harness on the ram every 16 days
- _____ Shear all sheep
- _____ Shear rams for breeding
- _____ Start increasing the energy feeds
- _____ Reduce ewes feed

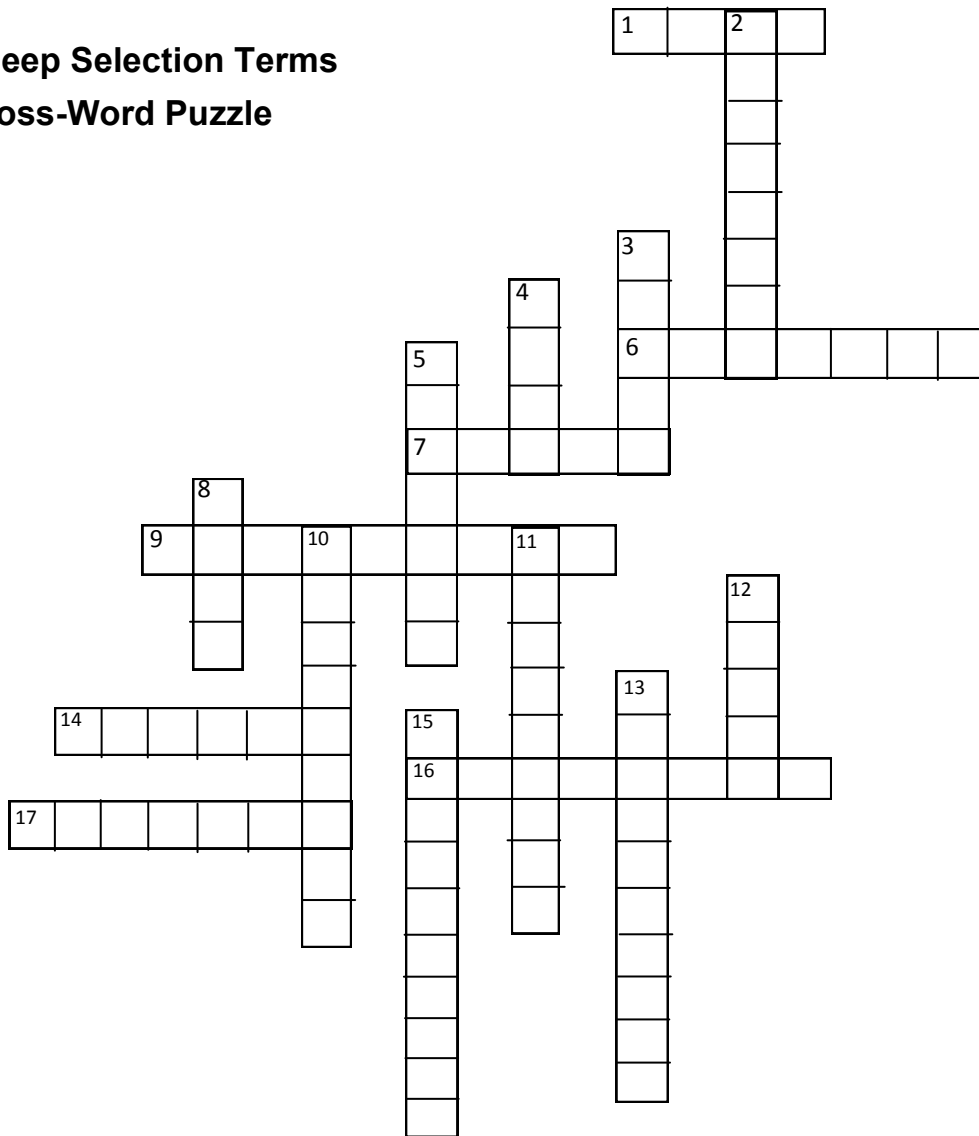
5. Lambs should be started on a creep ration at _____ to _____ days old.

6. What are the four USDA quality grades for lambs and yearling sheep?

7. Why do most wool manufactures not want colored wool?

8. What is the difference between outbreeding, inbreeding, and linebreeding?

**Sheep Selection Terms
Cross-Word Puzzle**



Across

1. region where the tail was removed
6. attractive, possessing a pleasing conformation
7. A very long body
9. the amount of bone
14. big, strong
16. longer and taller
17. a smooth and harmonious blending of body parts

Down

2. internal body dimensions
3. too much fat
4. the part between the last rib and the hip bones
5. the dressed body of a slaughtered meat animal
8. the area between the hip bones and the tail head
10. free of structural defects
11. the degree of fatness in breeding animals
12. size
13. the area of the lamb from the last rib back
15. possession of well-developed secondary female characteristics