



# 4-H Rabbit

Jasper County  
Record Sheet A  
Grade 3

Name: \_\_\_\_\_ 4-H Club \_\_\_\_\_

**Fur Types:** Draw a line to match the type of fur to the description.

Angora or Wool \_\_\_\_\_ This type of fur is short, dense and feels very soft to the touch.

Rex \_\_\_\_\_ This fur is the most common. It exists as rollback, flyback, or standing in the breed standards.

Satin \_\_\_\_\_ This fur is very shiny. Each hair shaft is hollow, causing this effect.

Normal \_\_\_\_\_ This fur is very long, thick and found on a limited number of breeds.

What breed is your rabbit? \_\_\_\_\_

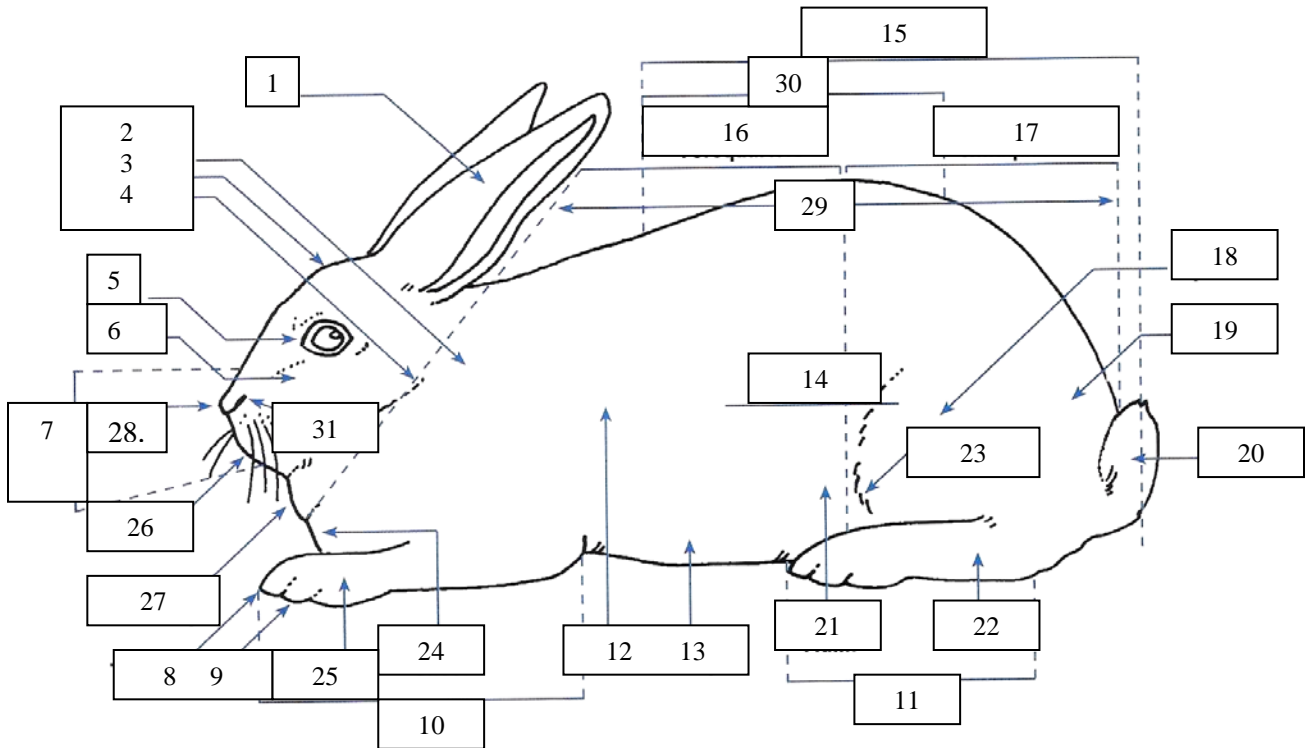
Name the characteristics of the breed. \_\_\_\_\_

**Handling Your Rabbit** –Fill in the blanks with the correct steps for handling your rabbit with the following words. Some words will be used more than once.

arm            arms            belly            break            carry            eyes            hand  
hutch          rabbit            release          rump            support        toe            weight

1. Put both of your \_\_\_\_\_ in the hutch. 2. Position one hand behind the rabbit's \_\_\_\_\_, while sliding the other hand underneath its \_\_\_\_\_. 3. Lift the \_\_\_\_\_ to the hutch door, being careful to \_\_\_\_\_ its rump and hind legs with one hand. 4. Be sure to life the rabbit toward you so that you do not \_\_\_\_\_ or pull the rabbit's toenails, or catch a \_\_\_\_\_ or foot on the wire. 5. Remove the rabbit headfirst from the \_\_\_\_\_. 6. With your hands still supporting the rabbit's \_\_\_\_\_ and \_\_\_\_\_, gently lift the rabbit upwards and tuck it under your \_\_\_\_\_. In this position the rabbit's \_\_\_\_\_ should be covered by your elbow. 7. Release one \_\_\_\_\_ from the rabbit's belly and place it underneath the rump to support its \_\_\_\_\_. 8. \_\_\_\_\_ the rabbit in this manner over to the table. 9. At the table, \_\_\_\_\_ the rabbit from under your arm while still supporting the rabbit's weight with one \_\_\_\_\_ underneath its rump. 10. Place the \_\_\_\_\_ on the table.

# Body Parts



1. \_\_\_\_\_
2. \_\_\_\_\_
3. \_\_\_\_\_
4. \_\_\_\_\_
5. \_\_\_\_\_
6. \_\_\_\_\_
7. \_\_\_\_\_
8. \_\_\_\_\_
9. \_\_\_\_\_
10. \_\_\_\_\_
11. \_\_\_\_\_
12. \_\_\_\_\_
13. \_\_\_\_\_
14. \_\_\_\_\_
15. \_\_\_\_\_
16. \_\_\_\_\_

17. \_\_\_\_\_
18. \_\_\_\_\_
19. \_\_\_\_\_
20. \_\_\_\_\_
21. \_\_\_\_\_
22. \_\_\_\_\_
23. \_\_\_\_\_
24. \_\_\_\_\_
25. \_\_\_\_\_
26. \_\_\_\_\_
27. \_\_\_\_\_
28. \_\_\_\_\_
29. \_\_\_\_\_
30. \_\_\_\_\_
31. \_\_\_\_\_