

Over the Back Fence

Agriculture and Natural Resources Extension Newsletter

In This Issue

- Indiana Master Naturalist Program
- Rain Garden
- SIPAC Field Days
- Glade Appreciation Day
- Native Habitat Alerts
- Youth Opportunities
- Ag Day
- PARP
- Small Farm Conference
- Stockmanship Stewardship
- Livestock Protection Sub-Permit
- Beef Quality Programs
- Webinars



*Indiana Master Naturalist Group at Blue River, 2019.
The 2021 Program starts September 30th!*

Purdue Extension Harrison County

p. 812 738-4236
f. 812 738-2259
e. medge@purdue.edu
a. 247 Atwood St. Corydon, IN
w. extension.purdue.edu/harrison
<https://www.facebook.com/HarrisonCoExtension>

Educator's Editorial

A New Year in Extension

It's been a hot and busy summer for Extension. I am definitely looking forward to the cooler temperatures of fall and the exciting programs we are offering in the new programming year!

The farmers markets are still offering plenty of local products through the end of the summer and into fall! Be sure to continue to support their hard work.

If you're interested in learning more about natural resources, get registered TODAY for our Master Naturalist program starting September 30th. 8 weeks filled with outdoor learning at the Nature Center in O'Bannon Woods. We hope you'll join us!

Look for more information about succession planning, farm stress, PARP credits, beginning farmer and other programs this winter!

Miranda C. Edge



Extension - Harrison County

Indiana Master Naturalist Program

2021

**Every
Thursday**
September 30

–
November 18

5:30 PM - 8:30 PM

O'bannon Woods
Nature Center
7234 Old Forest Rd
Corydon, IN 47112



**Registration
Info**
Class Fee

\$75.00

RSVP by Sept 25
812-738-4236

Miranda Edge
medge@purdue.edu

An Introductory Program of Nature and Discovery for Adults

Natural Habitats | Tree ID | Zoology | Water Biology | Geology | Archaeology

The Mission of the Indiana Master Naturalist is to bring together natural resource specialists with adult learners to foster an understanding of Indiana's plants, water, soils, and wildlife and promote volunteer service in local communities.



Extension - Harrison County

Making our Beautiful Rain Garden

What's going on outside our office building?

Starting in September, with the help of volunteers from the Master Gardeners and the Native Habitat Alliance Group, Purdue Extension Harrison County will be constructing a beautiful rain garden outside of our office building!



Sponsor, Dedicate, Memorialize

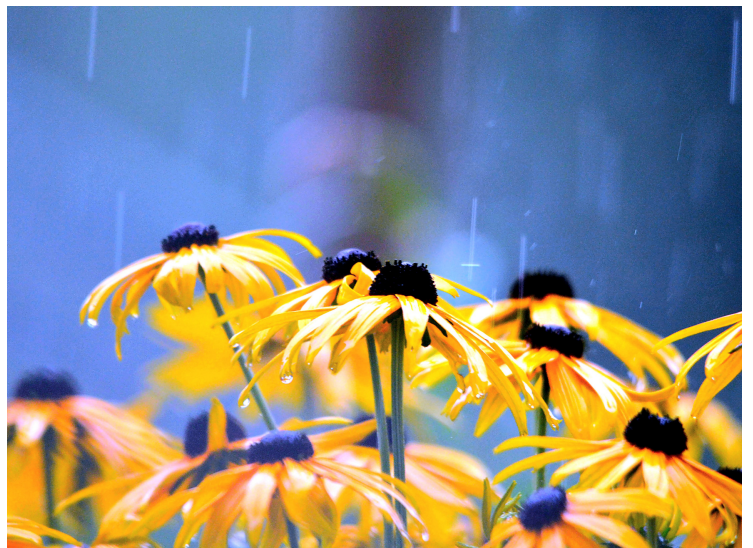
Purdue Extension affiliated groups such as the Master Gardeners, Extension Homemakers, and 4-H Clubs are welcome to sponsor plants, flowers, plaques, or other garden art towards the rain garden. You may dedicate or memorialize items in honor of someone special to your group, or simply sponsor items in your club's name. If you or your club is interested in sponsoring, please reach out to Miranda Edge at 812-738-4236 or medge@purdue.edu.

What is a Rain Garden?

Rain gardens are areas of the landscape designed to catch rainwater long enough to allow it to percolate slowly back into the groundwater rather than run off the soil. Rain gardens help recharge groundwater, improve the water quality of streams and rivers, reduce flooding, and provide cover for wildlife and butterflies.

Interested in Helping?

Interested in volunteering your time and effort into making our rain garden look great? Our first work day will be Saturday, September 25, 10:00 AM to 1:00 PM. Make sure you wear gardening clothes and bring water! Let us know you'd like to help by contacting Miranda Edge at 812-738-4236 or medge@purdue.edu.



SIPAC FIELD DAYS

Invasives Management for Landowners - Sept 11th 9am-5pm EST

- Assessing your invasive plant problem – species, size, amount
 - Three pillars of invasive management – prevention, early detection, strategic management of existing infestations.
 - Herbicides? Which to use, how to read the label, calculating rates, how to mix, application methods and techniques, timing, safety
- <https://bit.ly/SIPAC2021FieldDays>

Small Ruminant/FAMACHA - Sept 18th 1pm-5pm EST

- FAMACHA Training
 - Forage Type Stops
 - Katahdin EPD
 - Parasite Management
 - Black Vulture Damage & Control
- <https://bit.ly/SIPAC2021FieldDays>

Southern Indiana
Purdue Ag Center
(SIPAC)
11371 Purdue Farm Rd
Dubois, IN

Hands On! Practical!

Registration required
via phone (812) 338-5466 or online at:
<https://bit.ly/SIPAC2021FieldDays>

For More Information:
Jason Tower
towerj@purdue.edu
812-678-4427

PURDUE EXTENSION -
CRAWFORD COUNTY
[WWW.EXTENSION.PURDUE.EDU/
CRAWFORD](http://WWW.EXTENSION.PURDUE.EDU/CRAWFORD)

Glade Appreciation Day

Buena Vista Glade

September 25, 10 AM - NOON

Discover one of Harrison County's greatest treasures: endangered prairie ecosystems called glades and barrens. Learn about the rare plants and animals that live in this special habitat and what we can do to protect them.

All ages welcome. Wear appropriate clothing and sturdy shoes or boots. Bug spray is recommended. Free lunch after event provided by Harrison County SWCD (must register).

Contact 812-669-2093 or email HCNativeHabitatAlliance@gmail.com for more info. Meet at Saint Peters Church parking lot.

Register at forms.office.com/r/PsZeqRQH57



Native Habitat Alerts

**Fall Weed Wrangle:
October 16
9:00 AM - NOON**



The Harrison County Native Habitat Alliance will be hosting the Fall Weed Wrangle at Mosquito Creek Nature Reserve, 12505 Sunset Strip Rd SE, Laconia, IN 47135. For more information, visit the Harrison County Native Habitat Alliance on Facebook at facebook.com/HCNativeHabitatAlliance.

What is a Weed Wrangle?

Weed Wrangles are volunteer events hosted nationwide to control the invasive plants that are negatively impacting our natural areas. During these events, community members learn to identify and control

through hands-on removal of these invasive plants which are causing harm to our native plant communities. Across America, Weed Wrangle volunteers are lead by experts to learn how to identify and control invasive plants.

By engaging our community members and challenging them to work to manage invasive plants in their own spaces, we foster a collective effort to have a substantial positive impact for our native plants, pollinators, birds, and other wildlife

Invasive: Periwinkle

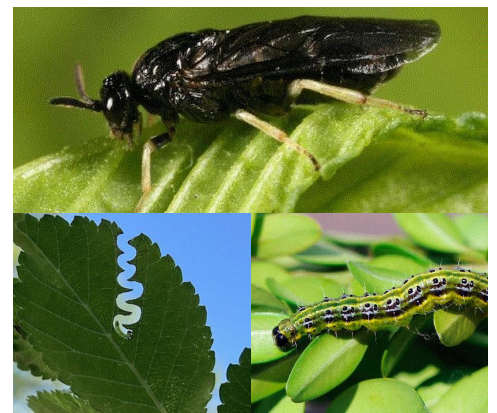
University scientists in Washington State have carried out Koch's Postulates proving that *Vinca minor* is a host for *Phytophthora ramorum*, which causes sudden oak death. Animal and Plant Health Inspection Service (APHIS) has not yet amended its list of hosts to include vinca – the agency is in the process of changing its host-listing procedures. See Elliott, M.; Rollins, L.; Bourret, T. and Chastagner, G. 2021. First report of leaf blight caused by *Phytophthora ramorum* on periwinkle (*Vinca minor*) in Washington State, USA. *Plant Disease*.

<https://doi.org/10.1094/PDIS-08-20-1721-PDN>. (Early view.)



Invasive: Zigzag Sawfly

Virginia Tech reports that USDA experts have confirmed the presence in Virginia of the elm zigzag sawfly, *Aproceros leucopoda*. The collection of larvae in Virginia was taken from Chinese elm, but elm zigzag sawfly is also known to feed on American elm, English elm, Siberia elm and several other elm species. The insect has previously been known to be present in Canada. See the announcement (with helpful pictures of symptoms) at growertalks.com/Newsletters/View/?article=3500



Native Habitat Alerts

Invasive Spotted Lanternfly in Southern IN

Purdue Landscape Report Issue 21-12

By Cliff Sadof, csadof@purdue.edu & by barne175@purdue.edu

Adapted from IDNR Press release by Cliff Sadof, Elizabeth Barnes, Purdue University and Amy Stone (The Ohio State University) Spotted lanternfly (SLF) (*Lycorma delicatula*) a serious invasive plant pest has been reported to be in Indiana. This federally regulated invasive species harms plants by slowing their growth and reducing fruit production, especially in vineyards and orchards. Finding this pest this far west of its previously known distribution makes it possible for SLF to be anywhere in Indiana. Knowing where this pest is located can help us respond more effectively to this pest. Right now, the Indiana DNR is asking for all citizens to keep an eye out for spotted lanternfly. The bright color of late stage immatures and adults are easily recognized at this time of the year. Anyone who spots signs of the spotted lanternfly should contact the Indiana Division of Entomology and Plant Pathology (DEPP) by calling 866-NO EXOTIC (866-663-9684) or send an email (with a photo of the insect if possible) to DEPP@dnr.IN.gov. For more information about this or other invasive pests see the following link <https://www.in.gov/dnr/entomology/pests-of-concern/spotted-lanternfly/>



Figure 1. Adult Spotted Lanternfly resting on the bark of a tree of heaven Vevay, Indiana. Photo taken by Ren Hall (DEPP)



Figure 2. Red immature stage of SLF (fourth instar) feeding on leaves of tree of heaven in Vevay, IN. Photo taken by Ren Hall (DEPP).



Figure 3. Egg mass of SLF on branch of tree of heaven in Vevay, IN. Photo Taken by Angela Rust (DEPP)

Figure 4. Sooty mold of SLF on branch of tree of heaven in Vevay, IN. Photo Taken by Angela Rust (DEPP).



Status of Known Indiana Infestation.

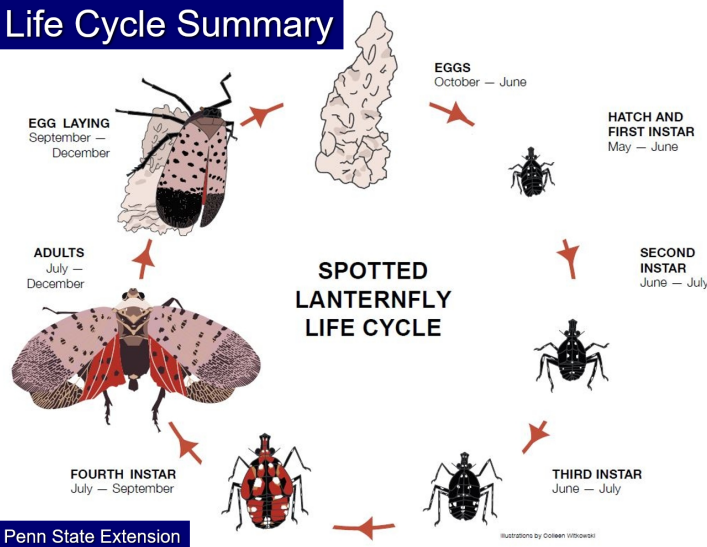
A homeowner in Vevay contacted DNR's Division of Entomology & Plant Pathology (DEPP) with a picture of a red immature stage near their home. DEPP staff surveyed the site and discovered an infestation in the woodlot adjacent to a few homes in the area. The site is within 2 miles of the Ohio River and the Markland Dam. DEPP and USDA are conducting an investigation to determine exactly how large the infestation is and where it could have come from, as well as how to limit the spread and eradicate the population

What is a Spotted Lanternfly?

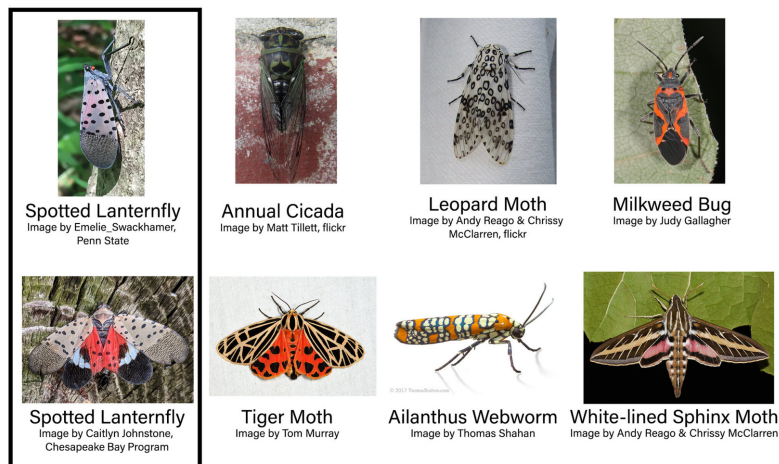
Spotted lanternfly is a plant hopper that originated in Asia. It was first discovered in the United States in Pennsylvania in 2014. The Pennsylvania Department of Agriculture was unable to limit the spread of this pest because it is an effective hitchhiker and is often spread unknowingly by humans. Adult spotted lanternfly has two sets of wings, and the underwing has a very distinct red color with spots on the outer wings. The fourth instar of the insect is bright red with black and white markings. The egg masses of this invasive insect look like mud and they can be spread by vehicle transport including recreational vehicles, cargo carriers (truck transport) and freight trains. They can also be spread through trade materials sold in infested areas that are

shipped out of state including nursery stock, outdoor furniture, lumber, etc. Anyone receiving goods from the east coast should inspect for signs of the insect, especially if the commodity is to be kept outdoors. Spotted lanternfly prefers to feed on tree of heaven (*Ailanthus altissima*), but it has been found on more than 103 species of plant including walnut, oak, maple, and various fruit trees. This insect is often found on grapevines in vineyards. Adult insects have piercing, sucking mouthparts and weaken the plants through feeding on them, which can make it difficult for the plant to survive the winter months. Congregating spotted lanternfly insects produce a sticky substance called "honeydew" in large quantities that over time becomes infested with sooty mold that attracts other pests in the area.

Life Cycle Summary



Spotted Lanternfly and Its Look-A-Likes



Native Habitat Alerts

Fall Armyworm

Reports of denuded forage crops, especially alfalfa, from large numbers of fall armyworm have been shared from throughout Kentucky and southern counties of Indiana and Illinois. Female moths arriving from southern states will seek late-developing crops (i.e., young, tender foliage) in which to lay their eggs. Identifying the larva is the first step, but is pretty easy for this species. The head of the fall armyworm is dark colored with a predominant white/yellow, inverted Y-shaped suture on the front.



Fall armyworm caterpillar with lengthwise stripes and inverted Y-shape on head. (Photo: J. Obermeyer)



Marching worms finished with the hay, now the turf. (Photo Credit: John Obermeyer)



Fall armyworm completely stripping foliage from alfalfa and fescue. (Photo Credit: B. Shelton)

This “Y” distinguishes the fall armyworm from other armyworm species. Although typically not a big concern in Indiana, this is one tough pest, and one of the key worldwide pests of a wide range of crops.

Most corn in southern counties has matured beyond any concern, but “trap” crops, e.g., replanted corn in drowned out areas or late-market sweet corn may be attractive. Unlike true armyworm (a corn/grass specialist), fall armyworm will feed on a wide range of broadleaves as well. It would be a stretch to say “they eat anything”, but not far off. By far, most damage reports are from hay/alfalfa mix fields. Initially, small larvae feed on the leaf surface, causing a “windowpane” effect, where the green tissue is removed and a transparent membrane remains. Fall armyworm will infest multiple species of grasses and broadleaf forages. Their insatiable appetite can denude alfalfa/hay crops rapidly, especially newly established stands. Like true armyworm, they “march” en masse to the next field. So if you see a field being destroyed, the crop next door is the one to watch. Pest managers, especially in southern Indiana counties, should monitor crops that are still green for fall armyworm presence and their damage. Homeowners with their yards adjacent to damaged pastures, are seeing their lawns turn brown to the line as the “army” moves!

Youth Opportunities

If your child is interested in science or art, these opportunities are for them! We have some very exciting workshops offered this year. Know a friend who may be interested? Invite them to join and reap the benefits of interactive education through Harrison County 4-H.

All youth in grades 3-12 are eligible to join 4-H. Youth in grades K-2 are eligible to join Mini 4-H. The state program fee is \$15 for 4-H, and Mini 4-H is free for Harrison County. Visit v2.4HOnline.com to enroll. The enrollment window is open from October 1 through January 15. Contact the 4-H Youth Development Educator, Rebecca Wilkins, at wilkin33@purdue.edu or call the Purdue Extension Harrison County Office at 812-738-4236 for more information.



Ceramics & Forestry

Create & Learn with 4-H!

September 15 5:30 PM - 7:00 PM

Purdue Extension Office

Create a Ceramic Division I project and learn about the Forestry Career Development Event (CDE)! This workshop is open to 3rd through 6th graders.

RSVP REQUIRED BY SEPTEMBER 10!

Call 812-738-4236



4-H Junior Vet Camp



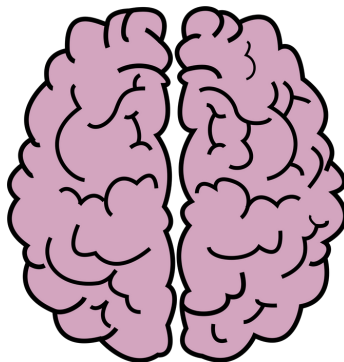
Fall of 2021!

ALL of our community's 3rd through 5th grade youth are invited to a hands-on Junior Vet Camp! We will learn about first aid, biosecurity, vaccinations, different body systems, nutrition, and we will even have a dissection lab with a real animal part! Space is limited, so watch for more information coming soon! The camp will be at the Purdue Extension Office Building at 247 Atwood Street. For more information call 812-738-4236 or email Rebecca at wilkin33@purdue.edu.

Brain Camp

Fall 2021

Youth in 6th through 12th grade in Harrison County are invited to attend Brain Camp! Learn about teen neurological development and parts of this fascinating organ through this special hands-on experience.



Dissect a Sheep Brain!

Participants will dissect a sheep brain while learning about their own brain development! More information coming soon. Check out extension.purdue.edu/harrison or our Facebook page for updates!

Youth Opportunities

Livestock 101 Series

Create & Learn with 4-H!

Interested in animal reproduction? This is an excellent hands-on workshop for youth in 6th through 12th grade! Discover artificial insemination in sheep while learning about anatomy, physiology, genetics, and selection. Class size is limited. Call 812-738-4236 or email Miranda Edge at medge@purdue.edu for more information!



Junior Master Naturalist & Naturalist Camp

Summer 2022

Indiana Master Naturalist (IMN):

The Junior Indiana Master Naturalist (JrIMN) Program is a great program for youth ages 9-12 to learn about Hoosier natural resources. JrIMN provides children w/many hands-on opportunities, nature discovery and volunteer service. Classes are typically held in the summer as day camps.

Check out the Junior and Teen IMN class list at stateparks.IN.gov/6323.htm.

Area II 4-H Camp

June 3 - 5

If your child is a 4-H member and is in the 3rd through 8th grade, be sure to mark your calendars for Area II 4-H Camp on June 3rd through 5th at the Country Lake Retreat Center in Clark County. Exciting details are still in the works, but you can check out the Country Lake Website for pictures and description of the facilities at countrylake.org.



Third Grade Ag Day

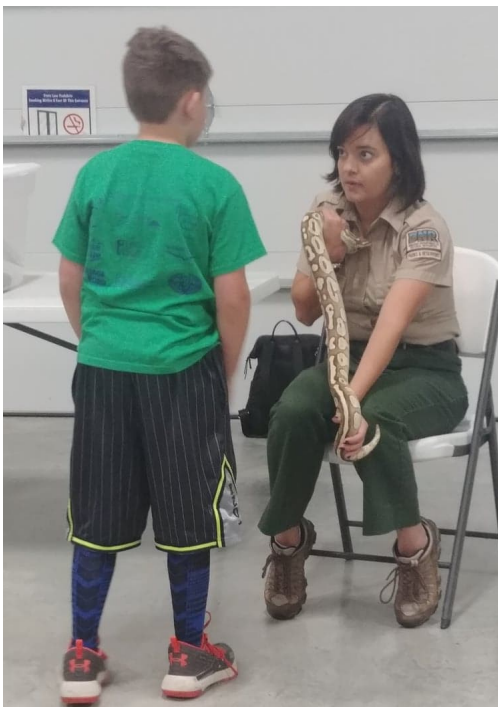
Innovating Ag Day

Ag Day 2020 had its challenges, and Ag Day 2021 is proving to bring challenges of its own. But if agriculture has taught us anything, it's that plans are made to be adapted to our environment. And that's just what we're doing.

Since two of our county school corporations currently have field trip restrictions, Harrison County's Third Grade Ag Day will go on the road this year. We've changed our format, so that each third grade student will be able to receive this unique experience this year!



We're looking forward to seeing each and every third grade student! And we look forward to seeing all of our regular presenters back at the Harrison County Fairgrounds in 2021. A special salute and shout out to all of the Harrison County school administrators that have worked so patiently with us to ensure this Ag Day event is a success!



Tentative Schedule

We've made many changes to our format, and condensed the program so that our presenters will be able to travel to our different schools.

Each school will experience the same programs:

- Harness Horse Racing Athletes: Humans and Horses
- Embryology
- Pollinators and Apples
- Dairy Livestock

September 29- Lanesville Elementary, St Johns, and St Joseph's

October 6- South Harrison Schools

October 7- North Harrison Elementary and Morgan Elementary

Check Your PARP Status

Pesticide Section Contact Information

- **Checking Your Status Online**
inplants.oisc.purdue.edu/USAPlantsIN/Index.aspx.
- **General Pesticide Licensing information and questions, including continuing education for commercial applicators(CCHs) and private applicators (PARP)**
Cassie Davis, 765-494-9563, davi1090@purdue.edu
- **Farmers and Restricted Use Pesticide Dealers**
Laura Fritz, 765-494-6271, lfritz1@purdue.edu
- **Commercial Applicators and Businesses**
Jill Davis, 765-494-1594, davisjs@purdue.edu
- **Pesticide Products, Product Registration**
L.E. Bradford

Save the
DATE

**NOVEMBER 9TH
AREA 2 PARP PROGRAM
THREE TIMES & LOCATION**

Diversified Farming and Food Systems

 **PURDUE**
UNIVERSITY. | Extension



INDIANA
SMALL FARM
CONFERENCE

SAVE THE DATE!

March 3 - 4, 2022

Hendricks County Fairgrounds
Danville, Indiana

2021

STOCKMANSHIP STEWARDSHIP



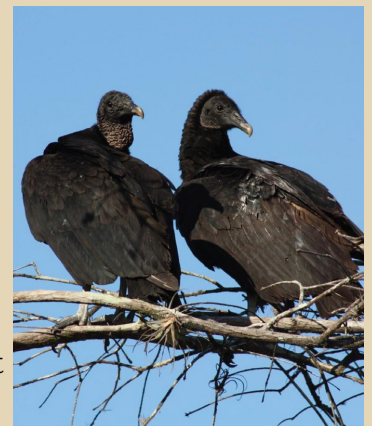
DANVILLE, IN | SEPT. 10-11

The Stockmanship & Stewardship Event in Danville, Indiana is sure to be a highlight of your year! This two-day event is packed full of key issues and fascinating speakers. Participants will have the opportunity to learn about a wide variety of topics including nutritional values, cattle handling demonstrations, protein upcycling, sustainability and cattle production, beef market update, cattle traceability and many more. Attendees will also have the chance to gain their Beef Quality Assurance (BQA) Certification, as well as tour our trade show and meet with our many sponsors and vendors. We are excited to welcome cattle producers the 2021 Stockmanship & Stewardship in Danville, Indiana on September 10-11!

\$100 Registration includes all events and meals. A discounted rate of \$50 is available for Students (Student ID required on site). For more information on the agenda, hotels, and to register, visit www.stockmanshipandstewardship.org.

Livestock Protection Sub-Permit Permits Now Available

Indiana Farm Bureau announced that its members may obtain permits through INFB that allow legal “takes” of black vultures that are attacking livestock such as newborn calves and sheep. For more background on this issue and to learn more about the permit application process, visit <http://infb.org/blackvultures>



What is Beef Quality Assurance?

Beef Quality Assurance (BQA) is a national program that raises consumer confidence through offering proper management techniques and commitment to quality within every segment of beef industry.



The Importance in Becoming BQA Certified

In response to consumer demand by food service companies for more beef quality assurance, some major beef processors will require its suppliers to have the BQA certification by January 1st of 2019. Major buyers such as Tyson and National Beef Packing required a BQA Certification on January 1st at 2019. Auction Markets will have two options. An auction market may require all fed cattle suppliers to be BQA certified to sell in auction or they must announce from the auction block during the sale which cattle are and which cattle are not sourced from a BQA certified supplier.

About Becoming Certified

The trainings are two hours long. Certifications are good for 3 years. Only one person from each operation is required to be certified to ensure the entire operation follows BQA standards.

However, everyone who handles and manages fed cattle is encouraged to become BQA certified.

Online Trainings are available at www.BQA.org.

For info on **In-Person Trainings** Contact the Indiana State Coordinator:

Phil Reid

Purdue University Department of Animal Science

2120 Creighton

West Lafayette, IN 47907

(765) 496-7370

preid@purdue.edu

IBEEF: Indiana Beef Evaluation & Economics Feeding Program

Opportunity To...

- Evaluate herd genetics for feedlot and carcass performance and value
- Determine if breeding and management programs produce cattle that fit current industry needs
- Market cattle through retained ownership
- Capture valuable information for future marketing.

Important Info

Detailed Guidelines can be found at:

ag.purdue.edu/ansc/ibeeef/Pages/default.aspx

Feedlot Location: Purdue University ASREC Beef Unit.

Contacts:

Matt Claeys: 765-427-9078

Brian DeFreese: 765-491-7424

Nick Minton: 812-797-7944

Entry Deadline is October 2, 2021

Webinars

Marion County Lunch & Learn Series

Fridays, NOON to 1:00 PM

Sept 24- Hydroponics

Oct 29- Healthy Snacks for Kids

Nov 19- Food Budgeting & Meal Planning

View each program live or pre-recorded.

extension.purdue.edu/Marion/article/40270

Recognizing Hazards Around the Farm

Wednesday, September 22, NOON EST

For generations we have known farming is not just an occupation, but can also be a way of life. Seeking to pass on this way of life to the next generation is one of our most important goals. Passing on the ability to recognize hazards, and how to avoid them could be one of the most important pieces to pass on. Hopefully in the future farming will become less dangerous. Until then let's all take time to recognize hazards, and how to prevent accidents on the farming operation

[purdue-
edu.zoom.us/meeting/register/tJckduCurj8oGN2Kir
JxiW6qFARdNJ0uBJ7H](https://purdue-edu.zoom.us/j/92282222222)

The NO HogWash Protein

Tuesday, October 19, 1:00 PM EST

Pork has many beneficial qualities that make it easy to incorporate into a balanced diet. Cutting fat? The pork industry has reduced the amount of fat in pork by 16% from 30 years ago. Eating plant based? Plants can be the star of the show, but add a 3 oz side serving of pork for many beneficial vitamins and minerals. Join Monica Nagele, MS/RD, and daughter of a Pig Farmer, to learn more about, raising pigs, cooking pork and the health benefits.

[purdue-
edu.zoom.us/meeting/register/tJlkdOqvqDgjGd0AB
D_snP0ns7r8e4Vl6mau](https://purdue-edu.zoom.us/j/92282222222)

Insights From Consumer Research That You Can Take Home to the Farm

Wednesday, November 17, NOON EST

What consumer-derived lessons can we draw from non-traditional places to garner understanding and insights for those in agricultural business? Dr. Nicole Widmar, Purdue University, will be presenting about Consumer Corner, where they derive insights from the consumer that you can take home to the farm!

[purdue-
edu.zoom.us/meeting/register/tJwPdOuhqToiGt2DG
DfmEeonxiktaybBXvzH](https://purdue-edu.zoom.us/j/92282222222)

Purdue Extension
Harrison County
247 Atwood Street
Corydon, IN 47112

NONPROFIT ORG
U.S. POSTAGE PAID
CORYDON, IN
PERMIT NO. 31



ANR Newsletter



Extension - Harrison County

Over the Back Fence

Agriculture and Natural Resources Extension Newsletter

Miranda Edge
County Extension Director
Extension Educator
Agriculture and Natural Resources

Rebecca Wilkins
Extension Educator
4-H Youth Development

Annette Lawler
Extension Educator
Health and Human Resources
Community Development

Katie Davidson
NEP Community Wellness Coordinator

Jackie Young
Nutrition Education Program

Mary Eve
Office Manager

Anna Denny
Program Assistant

Jane Lasher
Administrative Assistant

Connect with Us!



extension.purdue.edu/Harrison



facebook.com/HarrisonCoExtension



bit.ly/harrisoncoyoutube