

BEEF

Manual Information

1. The Beef Manuals are divided into three levels according to the following breakdown:

Level 1	Grades 3, 4, & 5
Level 2	Grades 6, 7, & 8
Level 3	Grades 9 and Above
2. Members will use the same manual for more than one year.
3. Members are strongly encouraged to attend activities and participate in the learning experiences offered for their level each year. Educational workshops may be offered in quality assurance to provide education related to the livestock drug residue policies denoted in the general livestock rules.
4. Signed record sheets must be presented and verified at animal check-in.
5. Record sheets will then be placed in your green folder and turned in at the county fair. 4-H leaders may grade record sheets.

Exhibit Requirements: Do one or more of the following:

1. Exhibit your beef animal(s) at the 4-H Beef Show.
2. Do an Interactive Demonstration.
3. Exhibit a Beef Educational Poster. (Refer to page 42 in this handbook for details.)

General Rules for 4-H Beef Show

1. Animals **must** be enrolled on the current Indiana 4-H Beef Ownership, Enrollment and Entry Form (4-H 515). Steers and commercial heifers are taken to the fairgrounds or another location for tagging in March, at which time the completed form is turned in. (02/14)
2. 4-H registered heifers must be owned by 4-H exhibitor and in exhibitor's possession by May 15th of current year. 4-H steers and commercial heifers must be owned by 4-H exhibitor and in exhibitor's possession by April 1st of current year.
3. **All beef cattle** must have an **840-RFID tag**. All market steers (beef and dairy beef) and commercial heifers need to be tagged with an 840-RFID tag and 5-digit county tag.
4. Stalls will be assigned by superintendent at barn set up ahead of the Fountain County 4-H Fair.
5. **Each exhibitor will be charged \$8.00 per head for registered heifers, and \$8.00 per head for steers and commercial heifers will be due in June for pen reservations. The cost per tag due at weigh in will be \$4.50.**
6. 4-H animal exhibitors may receive clipping and grooming assistance at the fair from anyone. Animals must be fit in designated areas.
7. All calves must meet State Board of Animal Health requirements.
8. Rules on back of State enrollment form will be used, except 900 pound minimum which relates to steers at the Indiana State Fair.
9. No steer can be shown that has permanent teeth showing or evidence thereof. Steers will be subject to mouthing and must have their milk teeth in place. (02/14)
10. Exhibitors of purebred beef heifers must have registration papers in hand at time of entry at the fair. Breed classification will be determined by registration papers of each individual animal.
11. Crossbred animals will be shown in a crossbred class. Crossbreds shall show evidence of beef breeding.
12. All steers and commercial heifers will be weighed and purebred heifers will be checked in as they arrive to the Fountain County 4-H Fair.
13. Any questioning of breeding or identification must be done upon the time of calf's entry to fairgrounds or before entry deadline. Livestock of questionable breeding will be reviewed by the superintendent, Extension Educator, and beef committee, and those individuals will have the final say in the outcome of the breed or identification protest.
14. Dehorning of 4-H animals of horned breeds is **mandatory** to ensure the safety of those on the fairgrounds.
15. All fans must be hung and are not allowed to be on carts or stands behind the cattle.
16. For all other rules also see **General Livestock Rules**.

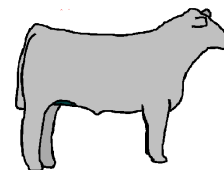
Beef Heifer Rules

1. Registered heifers must be identified on the enrollment form with 840-RFID tag and a tattoo.
2. Purebred heifers with registration papers will have a breed class and will be appropriately identified according to the Indiana State Fair guidelines. Others will be exhibited as crossbred.
3. Crossbred heifers will show by weight, not age.
4. A class may contain only one entry. Class make-up will be under the direction of the 4-H Beef Superintendent.

BEEF CLASSES

Heifer Classes:

1. Junior heifer calves born January 1 to March 31, 2020
2. Winter heifer calves born November 1 to December 31, 2019
3. Senior heifer calves born September 1 to October 31, 2019
4. Late summer yearling heifers born July 1 to August 31, 2019
5. Early summer yearling heifers born May 1 to June 30, 2019
6. Spring yearling heifers born March 1 to April 30, 2019
7. Junior yearling heifers born January 1 to February 28, 2019
8. Senior yearling heifers born September 1 to December 31, 2018
9. Selection of Champion and Reserve Champion heifer of each breed, selected from first and second place animals in each class.
10. Grand and Reserve Grand Champion heifer, 3rd overall, 4th overall, 5th overall



Cow-Calf Class:

A member may show one cow-calf pair per member. Cow is to have been shown at a previous Fountain County Fair by the 4-H'er or a family member and will not be considered for Grand Champion Female. After showing as a pair, the calf can be shown individually. Both are to be show broke. NO Grooming required washing and blowing only, no glues or adhesives. (02/14)

Steer Classes

1. Steer classes will be by breed and weight.
2. Selection of Champion and Reserve Champion steer of each breed, selected from first and second place animals in each class.
3. Grand and Reserve Grand Champion Steer, 3rd overall, 4th overall, 5th overall.

Feeder Calf

Those that those interested will need sign up for the Feeder Calf program by completing information on the PEN RESERVATION FORM, which will be sent after May 15th. **(All 4-H Projects including Livestock must again be entered into the Fair Entry System <https://fountaincounty-indiana.fairentry.com/Fair/SignIn/1049>)** The goal of this class will be to encourage youth to start early on their 2019- 2020 4-H Beef Projects.

Anyone showing a Cow/Calf Pair, and/or anyone interested in bringing a weaned feeder calf are welcomed and encouraged to sign up for the Feeder Calf Class.

Feeder calves will show in their own class at the beginning of the 4-H Beef Show on **Tuesday, July 14th at 9:00 am**. Feeder calves **will not** be eligible for any other classes or awards throughout the show.

1. All calves are to be born between January 1 and June 1 of the current year. If you are not showing them as a part of the Cow Calf Class then the calf must be weaned.
2. They must be beef calves.

3. You must enroll the calf in the Feeder Calf class via the pen reservation form.
4. Classes will be determined by weight only, and not divided by gender or breed.
5. Calves should not be fit (groomed) for this class.
6. Exhibitor's must be signed up for the 4-H Beef Project by May 15th.

Fountain County/Exhibitor Born and Raised: There will be special placings for cattle that are Fountain County Born and Raised. Cattle that qualify for this must have been born and raised in Fountain County (not necessarily by the exhibitor). These cattle should be declared 4HOnline system by the April 1st deadline for steers, and May 15th deadline for heifers.

Heifer: First and second place animals in each breed division will compete for Breed Champions of the Born and Raised Division. The Breed Champion and Reserve Breed Champions will be eligible to compete for the Champion and Reserve Champion, 3rd, 4th, and 5th Overall Fountain County Born and Raised in the night show.

Steer: First and second place animals in each breed division will compete for Breed Champions of the Born and Raised Division. The Breed Champion and Reserve Breed Champions will be eligible to compete for the Champion and Reserve Champion, 3rd, 4th, and 5th Overall Fountain County Born and Raised in the night show.

OTHER AWARDS

Rate of Gain Trophy

This trophy will be awarded to the exhibitor of the animal that was officially weighed and whose weight was recorded on the official "Indiana 4-H Livestock Ownership and Enrollment Form" and that has gained the most per day since the date weighed until weigh-in day, on the first day of the Fountain County Beef Weigh-In scheduled.

Cooper Kerr Memorial Award

Given to the 4-H Beef Member who does the most to help his fellow 4-H Club members, the Beef Show, and the County 4-H Program.

Chuck McCollum Memorial Award

Given in memory of Chuck McCollum, former 4-H Council Member.

Clean Stall Award

Given to the 4-H Beef member who keeps their area cleanest throughout the fair.

General Rules For Beef Interactive Demonstrations

1. Interactive Demonstrations may be given on any topic related to Beef and will be presented at an appointed time during the 4-H Fair.
2. Refer to "Verbal Communication Events and Activities" in this handbook for details.

Manuals:

Level 1: *Bite Into Beef* BU-6351
 Level 2: *Here's The Beef* BU-6352
 Level 3: *Leading The Charge* BU-6353

Optional Manuals/Resources:

Beef Resource Handbook 4-H 117R

Web Resources:

Record Sheet: C4-H 625a

To be listed on Fountain county 4-H website

Indiana 4-H Beef Ownership, Enrollment and Entry Form - 4-H 515

(Rev 10/13)