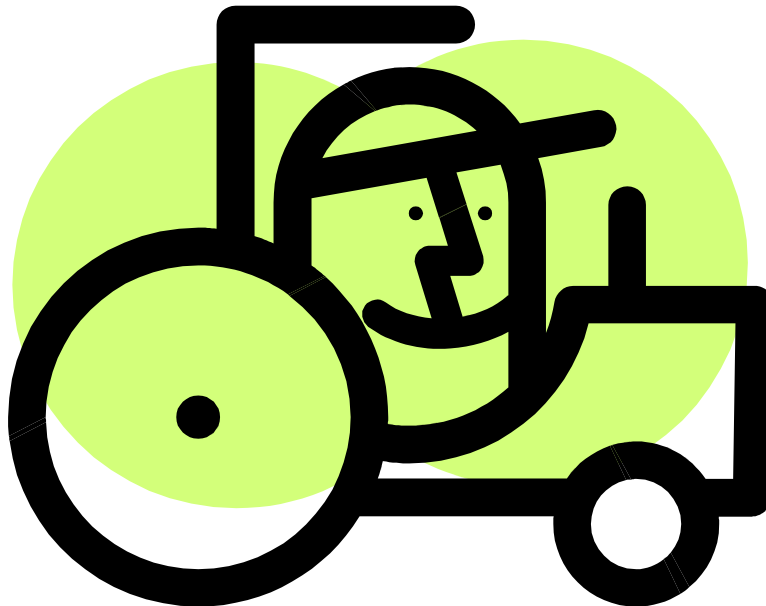


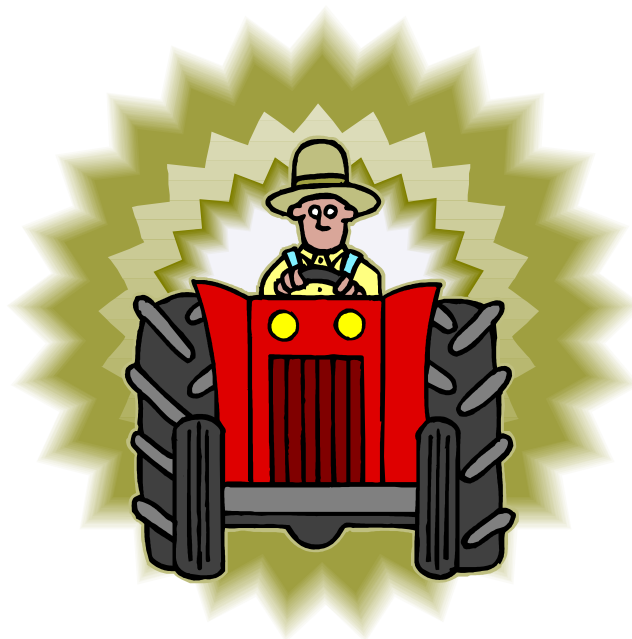


Mini 4-H TRACTOR



**An Introduction to Mini 4-H
for Youth in Grades K - 2**

A replacement manual
will cost \$1.00.



Developed by Purdue Extension - Elkhart County
17746 County Road 34 Ste E, Goshen, IN 46528, 574-533-0554

Elkhart County Mini 4-H Tractor Manual
Revised September 2015



4-H Facts



**The 4-H Symbol: A four leaf clover with
an “H” in each leaf.**

4-H Colors: Green and White

The 4-H Motto: To make the best better!

The 4-H Pledge:

I Pledge

**My Head to clearer thinking
My Heart to greater loyalty
My Hands to larger service
My Health to better living
For my Club,
My Community,
My Country,
and my World.**



Mini 4-H



Welcome to *Mini 4-H*! You are now a member of the 4-H family! We hope that you will have lots of fun learning new things in your 4-H career.

Mini 4-H is designed for youth in Kindergarten through Second grade. It will give you a taste of the 4-H program as well as help you to explore a variety of project areas.

Mini 4-H'ers may enroll in one project each year. This manual contains fun, age appropriate activities to complete throughout your 4-H year. These activities will help you to learn about the project you have chosen. Additionally, the manual contains all instructions for the exhibit you will be preparing for the Elkhart County 4-H Fair in July.

There is no competition in the *Mini 4-H* program. Each child who completes a project for the Fair will receive the same blue completion ribbon, certificate and 4-H pin. Judges comment sheets are provided only as a way to help you do your very best on future projects.

Mini 4-H is FUN! You will enjoy it. Try to attend the special activities planned especially for YOU! These will give you a chance to meet the project leaders, have some hands - on fun, and ask questions about that all important Fair display.

If you have questions about the *Mini 4-H* program, please call the Purdue Cooperative Extension Office at 574-533-0554. We will be happy to answer your questions.

As a Mini 4-H parent, please help guide and encourage your child through the activities. Work with them to help them to “learn by doing”. Activities are designed to help your child learn about the project they have chosen. It is not required that they complete all the activities. Choose those that interest you and your child.

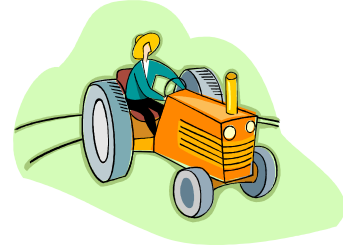
What is Mini 4-H Tractor?

Mini 4-H Tractor is designed to help you learn about tractors, both on the farm and in the lawn or garden. There are many types of tractors and safety rules that you must learn to operate them safely. You do not need to live on a farm or own your own tractor to participate in the tractor project. You may wish to enroll in the tractor driving contests when you are old enough for traditional 4-H.

ACTIVITY 1 - TRACTOR DRIVING CONTESTS

Materials needed for this activity:

None



What you will do:

1. Attend the Elkhart County 4-H Tractor Driving contests, held each year in early May. Watch the 4-H'ers drive through the obstacle course. Check with your Mini 4-H Tractor leader for the exact date. There are two 4-H clubs that teach 4-H'ers about the safe operation of the tractor. These are the Farm Tractor Club and the Garden Tractor Club. 4-H'ers may enroll in one or both projects.

You do not need to live on a farm or own your own a tractor to participate.

Youth take a quiz on the safety rules and identify parts.

Youth then drive the tractors along a set course and are graded on their ability to follow the obstacle course.

Youth are judged in two divisions: Junior for youth in grades 3 - 7 and Senior for youth in grades 8 - 12. ***Mini 4-H'ers are not permitted to drive tractors for any 4-H activity.***

What did you learn?

What contest did you watch?

_____ Farm Tractor _____ Garden Tractor

What contest did you like best? _____

Why? _____

ACTIVITY 2 - IDENTIFY PARTS

Materials needed for this activity:

Pencil

What you will do:

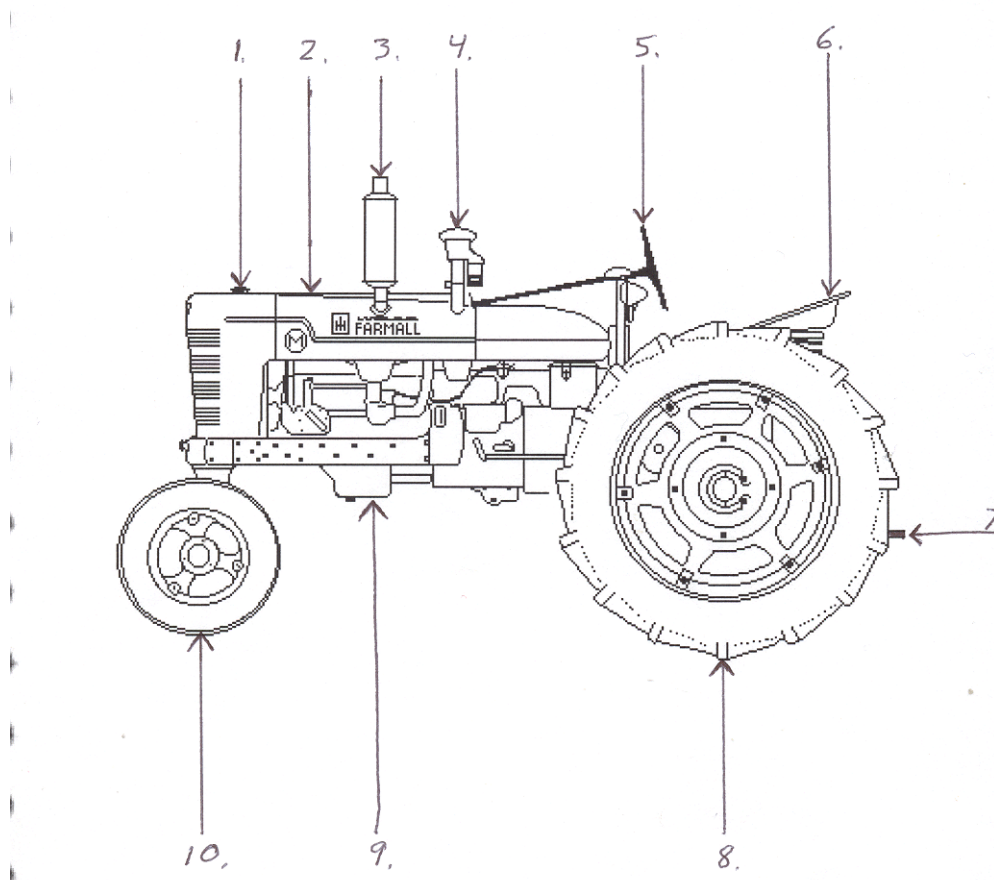
- 1- Look at the picture of the tractor. You will see numbers pointing to certain parts of the tractor.
- 2- Label the parts, choosing parts from the word bank.

Word Bank:

Hood
Oil Pan
Seat
Front Tire

Radiator Cap
Air Intake
Rear Tire

Steering Wheel
Exhaust Pipe
Draw Bar



- | | |
|-----------|------------|
| 1 - _____ | 6 - _____ |
| 2 - _____ | 7 - _____ |
| 3 - _____ | 8 - _____ |
| 4 - _____ | 9 - _____ |
| 5 - _____ | 10 - _____ |

What did you learn?

- 1 - Did you hard time naming the parts? _____
- 2 - What part was easiest to identify? _____
- 3 - Were any of the parts like the parts on your bicycle? _____
- 4 - Name one part that you would find on a garden tractor that you don't find in this example? _____

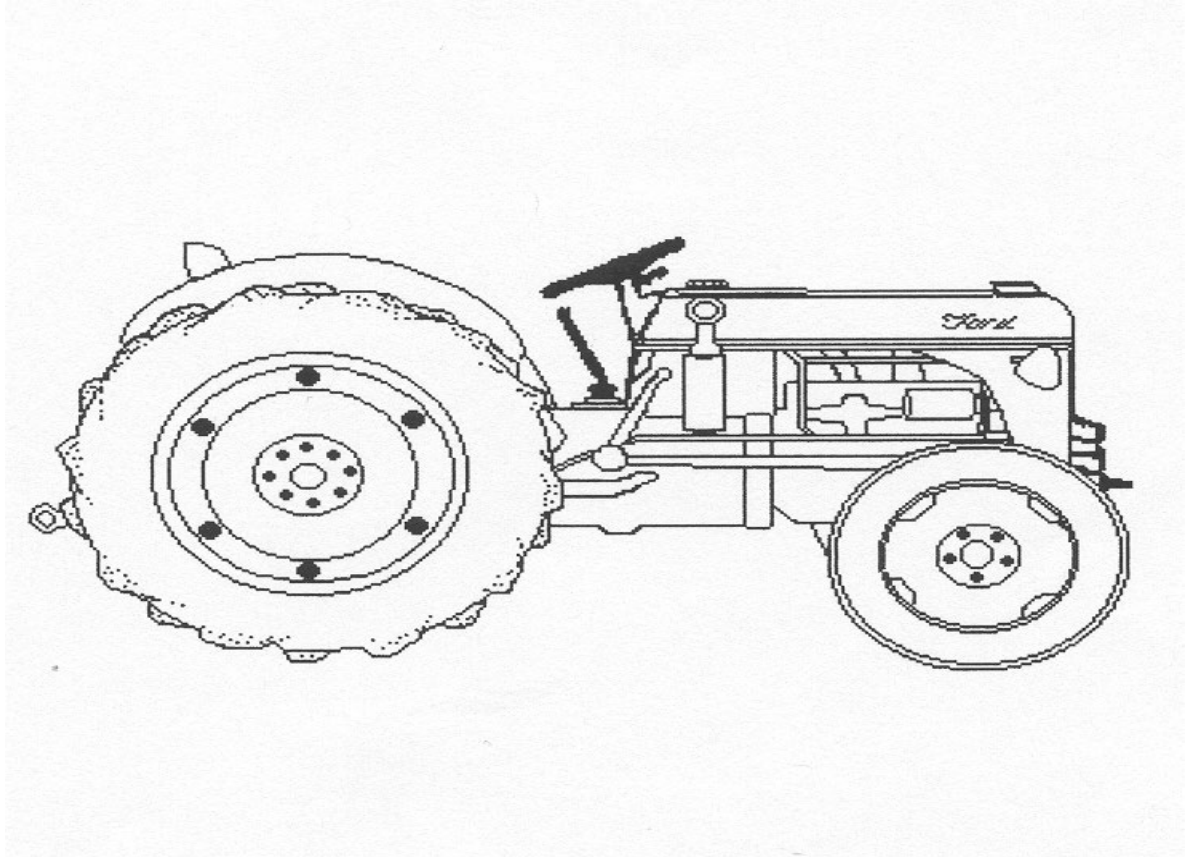
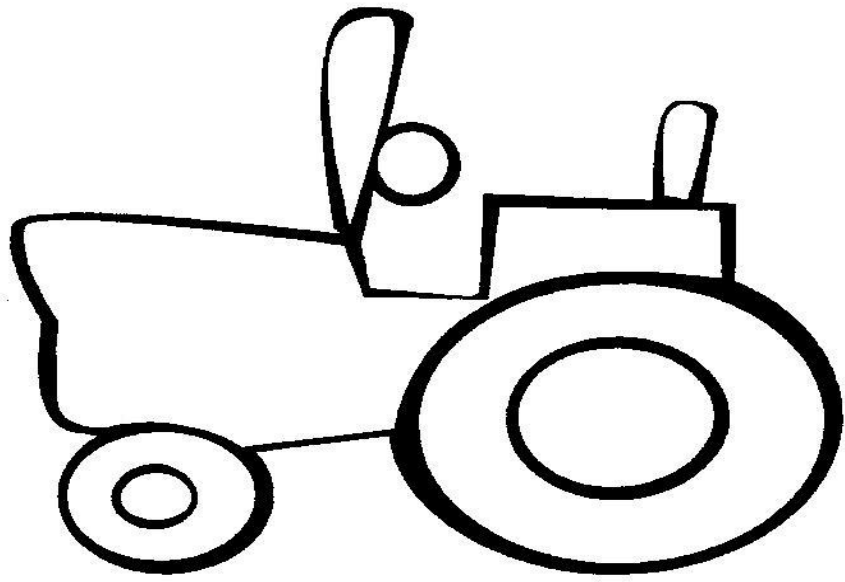
ACTIVITY 3 – MANY KINDS OF TRACTORS

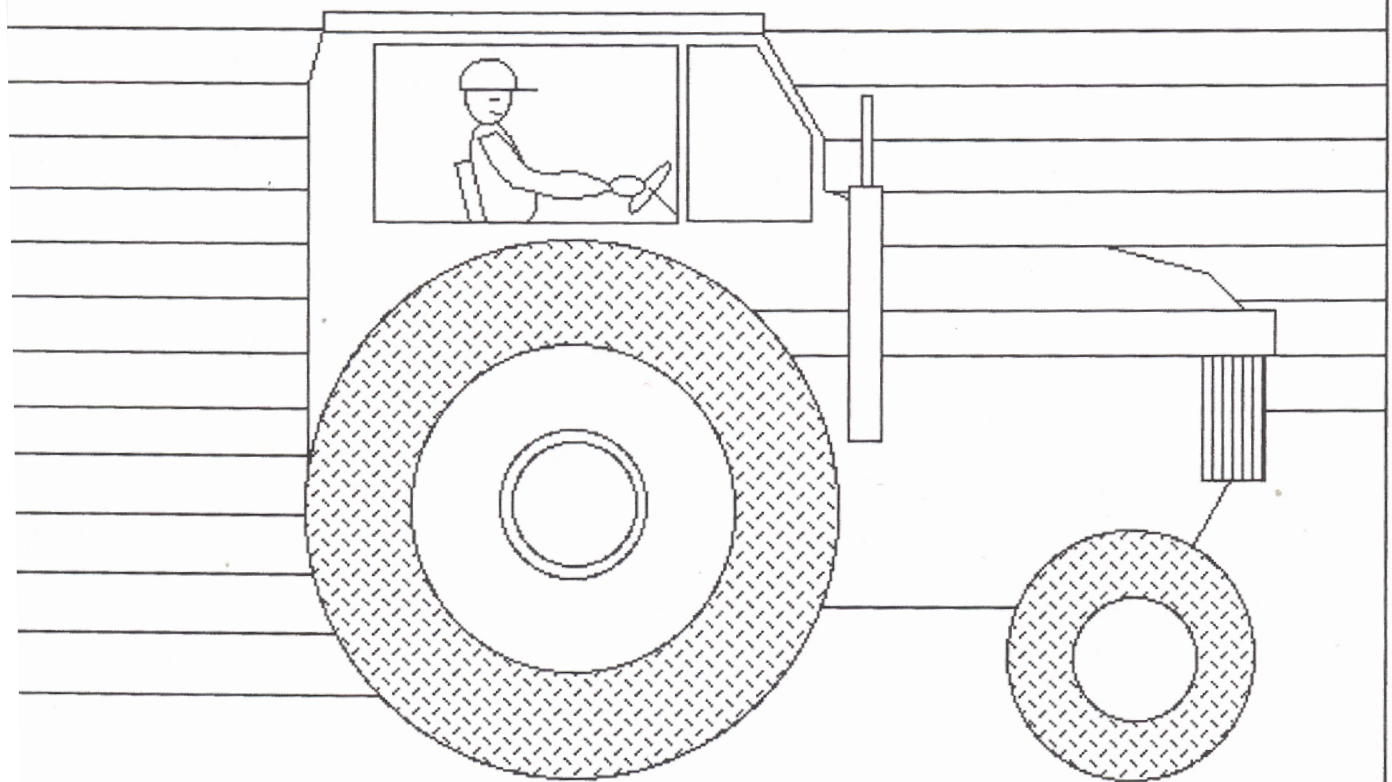
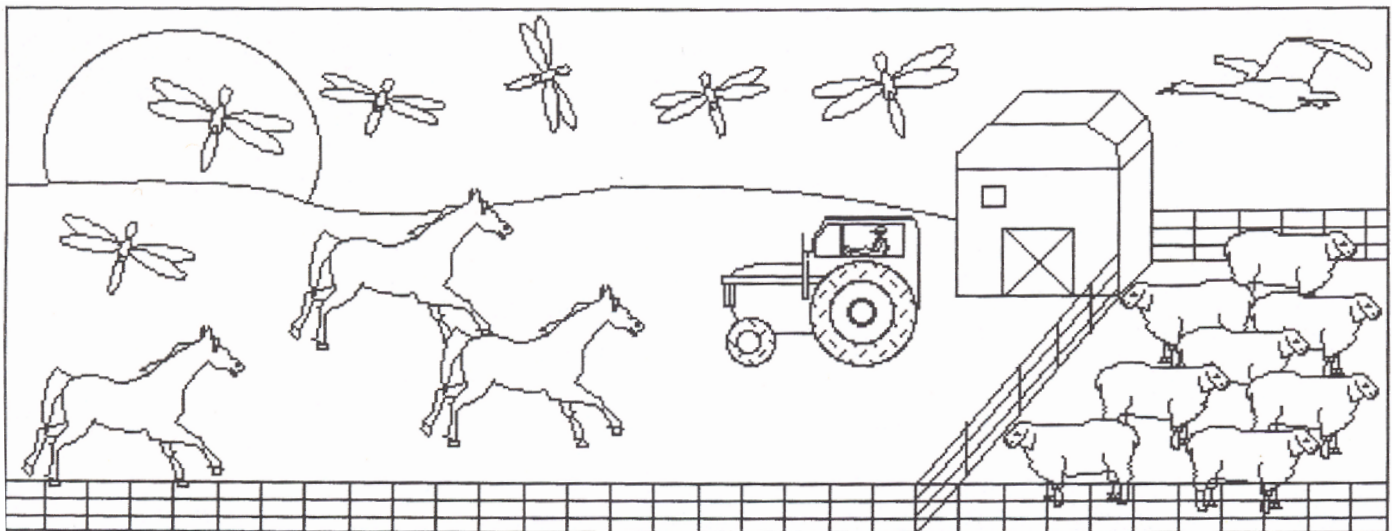
Materials needed for this activity:

Crayons, colored pencils or markers

What you will do:

- 1 - Choose some or all of the tractor pictures on the following pages to color.


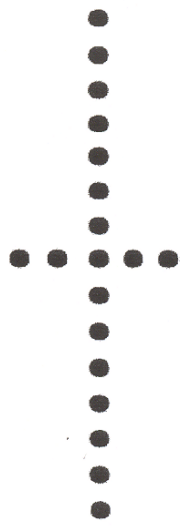




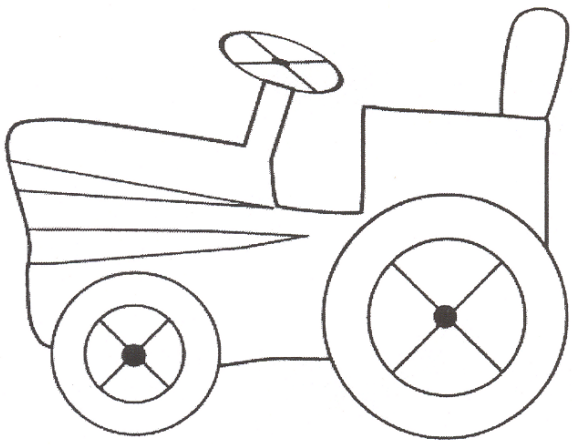

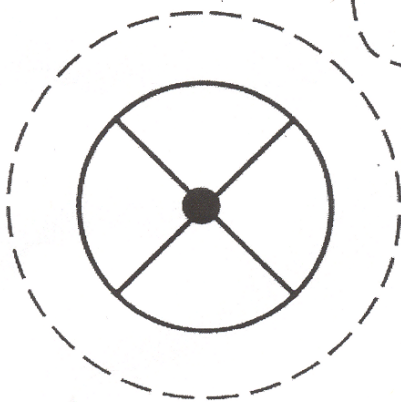


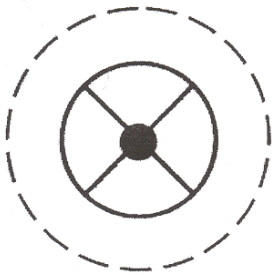
Tractor

©EnchantedLearning.com

Name _____

t tractor

tractor

2002 www.first-schools.co.uk

Cut out alphabet flash card above, trace dotted letter, color image and fold on middle line and glue. Art activity: Trace on dotted line. Color, cut out on traced solid lines and glue pieces. Optional: attach wheels with fasteners - age 3+ only.

What did you learn?

1 - What color did you choose for your tractors? _____

2 - Is this the color of a tractor that you saw? _____

3 - Where did you see the tractor(s)? _____

ACTIVITY 4 - SCRAMBLED WORDS

Materials needed for this activity:

Pencil

What you will do:

1 - Unscramble these tractor words.

Hint – these are parts of a tractor. Word bank is on the next page.

1 - riet _____

11 - ractotr _____

2 - marf _____

12 - teas _____

3 - sayfet _____

13 – remraf _____

4 - nigitoi _____

14 - tlelteas _____

5 - rinju _____

15 - eered ohm _____

6 - deah gilt _____

16 - rlaultugria _____

7 - dorf _____

17 – TOP _____

8 - rdzaah _____

18 - allramf _____

9 - tchih _____

19 - PSOR _____

10 - seeldi _____

20 - akerb depal _____

21 - lows voming hievlce _____

Word Bank:

slow moving vehicle
Farmall
head light
brake pedal
hazard

injury
ignition
tire
tractor
agricultural

farm
Ford
seatbelt
safety

diesel
farmer
hitch
ROPS

seat
John Deere
PTO
farmer

What did you learn?

1 - Did you need to peak at the answers? _____

2 - How many did you get without looking at the answers? _____

3 - Which was the hardest? _____

ACTIVITY 5 - SAFETY SIGNALS

Materials needed for this activity:

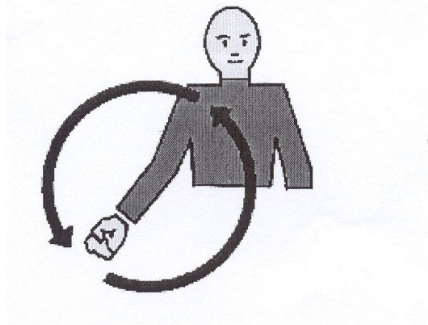
None

What you will do:

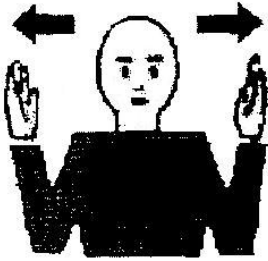
1 - Look at the hand signals in this book.

2 - Practice using the hand signals.

Farm tractors and equipment can be very noisy. It can be very difficult to hear what someone is trying to tell you, even if they are yelling from just a few feet away. A safer way to speak with someone is by using hand signals. Even when you cannot hear, you can pass on information by using these hand signals. These are the “universal hand signals are used for many different things.

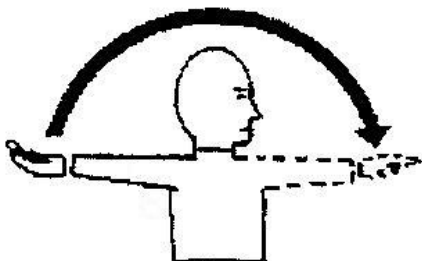
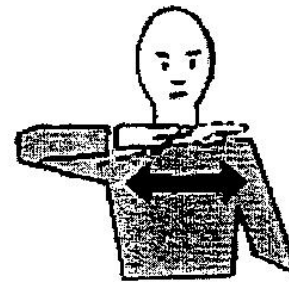


Start the engine: Move arm in a circle with your elbow bent in front of you.

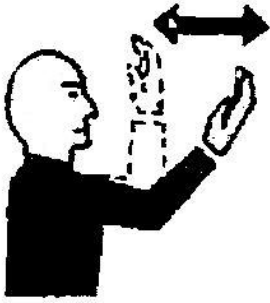


This far to go: Start with hands apart and palms facing each other in front of you. Slowly move hands towards one another to show the driver how much farther they need to go. Hands should be together when the driver is in place.

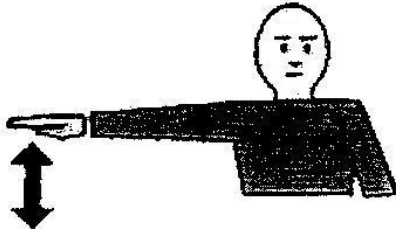
Stop the engine: move hand horizontally across the front of your neck.



Move out: Face in the direction that the vehicle is to be moved. Put your arm straight out behind you. Then swing your arm forward over your head until your arm is straight out in front of you with the palm facing the ground.

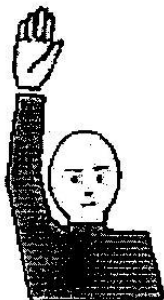


Move toward me - follow me: Look towards the person or vehicle that needs to move. Extend your arm with the palm facing up. Move your forearm and hand towards your face so that your palm is towards your face.



Decrease speed: Extend your arm with the palm facing down. Move your arm down several times. Never raise your arm above the level of your shoulder.

Come to me: Extend your arm up over your head with your palm facing forward. Move your hand in large circles.



Stop: Raise your hand straight up over your head. Keep it there until the driver understands.

What did you learn?

1 - With whom did you practice your hand signals? _____

2 - What other places (workers) would use these hand signals? _____

3 - Did you see anyone use these signals? _____

Where? _____

ACTIVITY 6 - TRACTOR SAFETY

Materials needed for this activity:

None

What you will do:

1 - Look at the tractor safety rules in this book.

2 - Talk about safety rules with an adult.



The Plain Facts About Tractor Safety

Farm tractors should be equipped for rollover accidents.

More than half of all farm tractors are not equipped with a rollover protective structure (ROPS). ROPS and seatbelt - equipped tractors would save approximately 350 lives annually on U.S. farms.

Farm tractors should be equipped with bypass starter covers.

Many farm tractors do not have bypass starter covers for preventing jump starting. Tractor operators may attempt to jump start a farm tractor if the battery is dead. If the tractor is in gear, it could lurch forward and run over operators and innocent bystanders. A bypass starter cover would save lives.

Farm tractors should be equipped with master shields.

Many farm tractors do not have their original equipment power take-off master shields. Many master shields are removed by farmers and are not replaced. If the missing shield exposes an operating power take-off, operators are at risk for entanglement around the spinning shaft.

Farm tractors should be equipped with SMV emblems.

Many farm tractors driven on public highways do not have a Slow Moving Vehicle (SMV) emblem. State vehicle codes require the mounting of an SMV emblem on equipment moving at less than 25 miles per hour on highways. SMV emblems warn other drivers of the slow moving vehicle on the roadway.

Farm tractors should be equipped with emergency lighting.

Many farm tractors do not have functioning hazard warning lights. Operating headlights and hazard warning lights provide advance warning for other drivers sharing the highway with farm equipment.

Farm equipment should be hitched properly.

Farm tractors may become unstable when improper hitching is attempted. Tractor drawbars are designed for towing and take into account the tractor's crucial center of gravity. Hitching or towing at points other than the drawbar may result in a rear overturn.

Farm tractors should not transport extra passengers

Most farm tractors are only designed for one person. Extra riders on farm tractors are discouraged due to the hazard associated with falling from the tractor or falling into the path of trailing equipment. Carrying passengers may divert the attention of the driver from the important task of operating the tractor.

For more information, contact us at NECAS, 10250 Sundown Rd., Peosta, Iowa 52068
Tel: (563) 557 - 0354 or (888) 844 - 6322; Fax (563) 557 - 0353.

What did you learn?

1 - Name two things you learned in reading the safety rules (that you did not know before)? _____

2 - What other places would we need to think about safety rules? _____

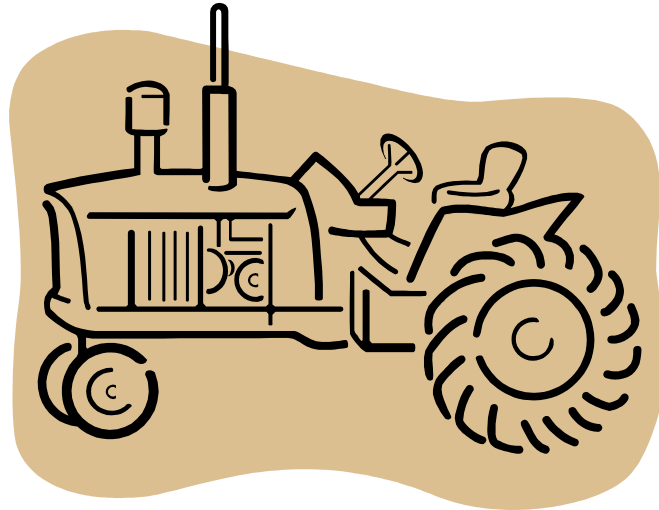
Answers to tractor parts activity page 7

1 - radiator cap 2 - hood 3 - exhaust pipe 4 - air intake 5 - steering wheel 6 - seat
7 - draw bar 8 - rear tire 9 - oil pan 10 - front tire



Answers to scrambled words activity – page 11

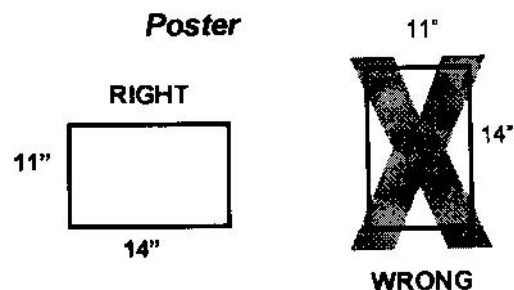
1 - tire 2 - farm 3 - safety 4 - ignition 5 - injury 6 - head light 7 - Ford 8 - hazard
9 - hitch 10 - diesel 11 - tractor 12 - seat 13 - farmer 14 - seat belt 15 - John Deere
16 - agricultural 17 - PTO 18 - Farmall 19 - ROPS 20 - brake pedal
21 - slow moving vehicle





What to Exhibit Tractor

Make a Tractor poster. Your poster must be exactly 11 x 14 inches, displayed horizontally (wider than it is tall) and attached to a stiff backing (like cardboard). You may use foam board. Foam board is already stiff and does not require additional backing. Your poster must be covered with clear plastic. This can be a poster sleeve. If you have made a three dimensional item, you may use clear vinyl. Your poster must have a title.



Choose one or more of these ideas for your poster:

- A picture you have drawn of your favorite tractor.
- A story about your favorite tractor.
- A collection of photographs or cut out pictures of tractors or of you with a tractor.

All posters must include: (both are found on page 20)

- Record sheet (attached to the back)
- Exhibit card (attached to the lower right front corner)

Note: No oversize posters will be accepted for exhibition!

Please plan to pick up your poster on project release day, the Monday following the close of the Fair. If you cannot pick it up, please arrange to have someone pick it up for you. There is no available storage space for unclaimed projects after this date.

Mini 4-H

Name _____

City _____ **Grade** _____

School _____

TRACTOR

Exhibit Tag:

Record Sheet

- - - - - **Cut here** - - - - -

Name _____ Grade _____

Why did you choose this project?

How much time did you spend on this project?

Who helped you with your project?

What did you learn from this project?

Do you think you will join the tractor club in third grade? _____

Farm Tractor _____ Garden Tractor _____ Both _____