

PURDUE EXTENSION BOONE COUNTY

4-H HORSE AND PONY WORKSHEETS

Grade 4-D



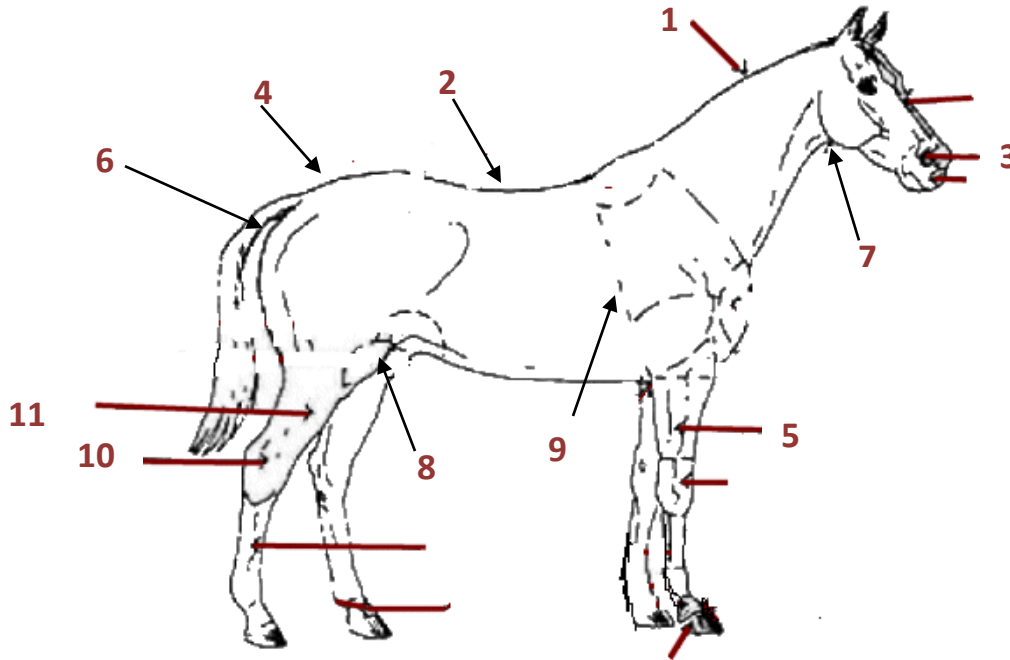
Name: _____

Grade: _____

4-H Club: _____

Date: _____

1. Parts of a Horse



Place the number from the above picture with the matching body part.

Back
Buttocks
Crest
Croup

Flank
Forearm
Gaskin
Heart Girth

Throat Latch
Nostrils
Hock

Answers can be found in the OSU Beginning Horse Management manual 4-H 174

2. Match the coat colors with the correct description

Roan	Has irregular patches in more than one color
Bay	White intermingled with one or more based colors.
Paint	This horse is a mixture of red and yellow/brown
Brown	The body color can range from light yellow to bright copper.
Palomino	This color of horse is made up of both brown and black hair and the mane and tail are always dark.

3. Horse Types and Uses. Fill in the Blank

_____ Horses were originally developed for working livestock on ranches and for short distance racing

The _____ horse is best known for its smooth, ground-covering, easy-traveling gaits.

What are the four qualities that a good hunter horse should have?

- 1.
- 2.
- 3.
- 4.

_____ Are the three primary breeds used for racing.