

# Rabbit Activity Sheet -2021

## Level 1 - Grades 3-4-5

Complete Packet due to the Extension Office June 30, 2021

\$1.00



Allen County 4-H  
Skills for Life

### What you will do in this project:

- Enroll in the 4-H program by **January 15** in v2.4HOnline.
- Enter rabbits to be shown at the County Fair online by June 30 on the Fair Entry website at <https://allencountyindiana.fairentry.com>. You will need to use Firefox or Google Chrome to make the entries. It is helpful to fill out the Rabbit Identification Guide first.
- Complete 2 activities in the Rabbit Activity Worksheet and turn it into the Extension Office on or before **JUNE 30**. The form is at [www.extension.purdue.edu/allen](http://www.extension.purdue.edu/allen).
- The Rabbit ID Guide must be turned into the Extension Office on or before June 30. It is to be attached to the Rabbit Activity Worksheets.
- Members showing meat pens and single fryers must contact person on Rabbit ID Guide to get an assigned tattoo letter. The assigned letter must be on the ID Guide when it is turned in. Check the rule book for age and weight requirements of rabbits.
- It is recommended that exhibitor attends two County 4-H Rabbit workshops when offered.
- It is recommended that each family purchase a Rabbit Resource Handbook. The handbook is a good source of information and can be used as a reference when answering questions in the activity sheet.
- All new rabbits in your rabbitry need to be purchased before April 15. This includes the does that are bred for your meat pens and single fryers.
- Refer to the Allen County 4-H Rules Book for a complete listing of all regulations concerning this rabbit project. The rule book can be viewed online at website [www.extension.purdue.edu/allen](http://www.extension.purdue.edu/allen)
- To exhibit beef cattle, dairy cattle, swine, sheep, meat goats, dairy goats, poultry and rabbits, 4-H members must be certified through the Youth for the Quality Care of Animals program. This is an annual program that can be completed via online modules or in-person trainings. For more information

about in-person trainings in your county, please contact your County Extension Office. More information about YQCA is available at <http://yqca.org/>. **Attach a copy of YQCA card.**

### Management Tips:

- Rabbits should be provided with plenty of fresh water daily. It is best to change their water twice a day, especially on hot days or in the winter when the water dishes freeze.
- Use a good quality commercial food pellet. Ask other rabbit breeders what feed they give their rabbits and find one that works for your rabbits. The package should give a suggested amount of feed to give daily and then adjust to each rabbit's needs.
- Get in the habit of watching your rabbit's behavior. Make sure they are acting, eating and drinking normally.
- Purchase rabbits from a reputable breeder. The breeder that you purchase your rabbits from will be able to answer questions on feeding, health, housing, and breeding.
- Provide rabbits with an appropriate size cage for their size and weight. The cage should also protect them from predators as well as shelter them from cold drafts, rain, sun and heat.
- Regularly handle your rabbits. A rabbit that is handled often is easier to work with. Practice poising them for show, groom and trim nails if needed, check their teeth and overall condition.
- Be responsible. Your rabbits depend on you to feed, water and care for them.
- A good source of information is The American Rabbit Breeders Association. Their web page is: <http://arba.net>.

4-H Member: \_\_\_\_\_ 4-H Club: \_\_\_\_\_

Grade in School (January 1, 2021) \_\_\_\_\_ Years in this project \_\_\_\_\_

Signature of 4-H Member verifying that you have completed these activities:

\_\_\_\_\_

Signature of Parent that you have reviewed this information:

\_\_\_\_\_

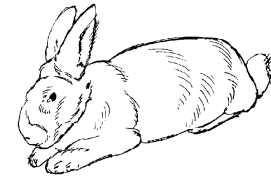
## 4-H Animal Care:

The Indiana 4-H program strongly supports positive animal care and strongly opposes animal abuse. 4-H is also dedicated to the mission of developing youth and volunteers through "Learning by Doing" programs. 4-H livestock projects teach life skills such as acquiring knowledge, making decisions, and applying leadership skills.

- When working and caring for animals, it is important to insure that appropriate safety measures are in place for both the animals and the persons who care for them. Therefore, there is no substitute for knowledge, common sense, and experience.
- Animal handlers should study and learn to anticipate an animal's reaction and try and avoid problem situations. It is most important that 4-H members understand an animal's behavior so one can "outsmart" not "out-muscle" an animal. Foremost in the 4-H'ers mind should always be safety of the handler and the animal. Moving animals is more of an art than a science. Movement of animals requires planning and knowledge to accomplish it with the least amount of time, effort and stress to the animal.
- An animal's good health is often directly related to the environmental factors associated with its living space. The presence of predators, dust, odors, pests, temperature, and humidity has a direct effect on an animal's well-being.
- Animals react favorably to daily care and comfortable housing. Consideration should also be given to specific animal needs such as size of their housing space, lighting, and ventilation. The best facilities and equipment cannot and should not be a substitute for daily observation and careful attention to signs of illness, injury, and/or unusual behavior.
- Frequent consultation with your veterinarian is a must. Reasonable attention must always be given to the use of drugs and their approved withdrawal times.

### Activity 1

## Let the Fur Fly



1. Look at a rabbit's feet. How many toes are on the front feet? \_\_\_\_\_

How many toes are on the back feet? \_\_\_\_\_

2. List the four different types of rabbit fur. (Rabbit Resource Handbook Chapter 3 Selection)

1. \_\_\_\_\_

2. \_\_\_\_\_

3. \_\_\_\_\_

4. \_\_\_\_\_

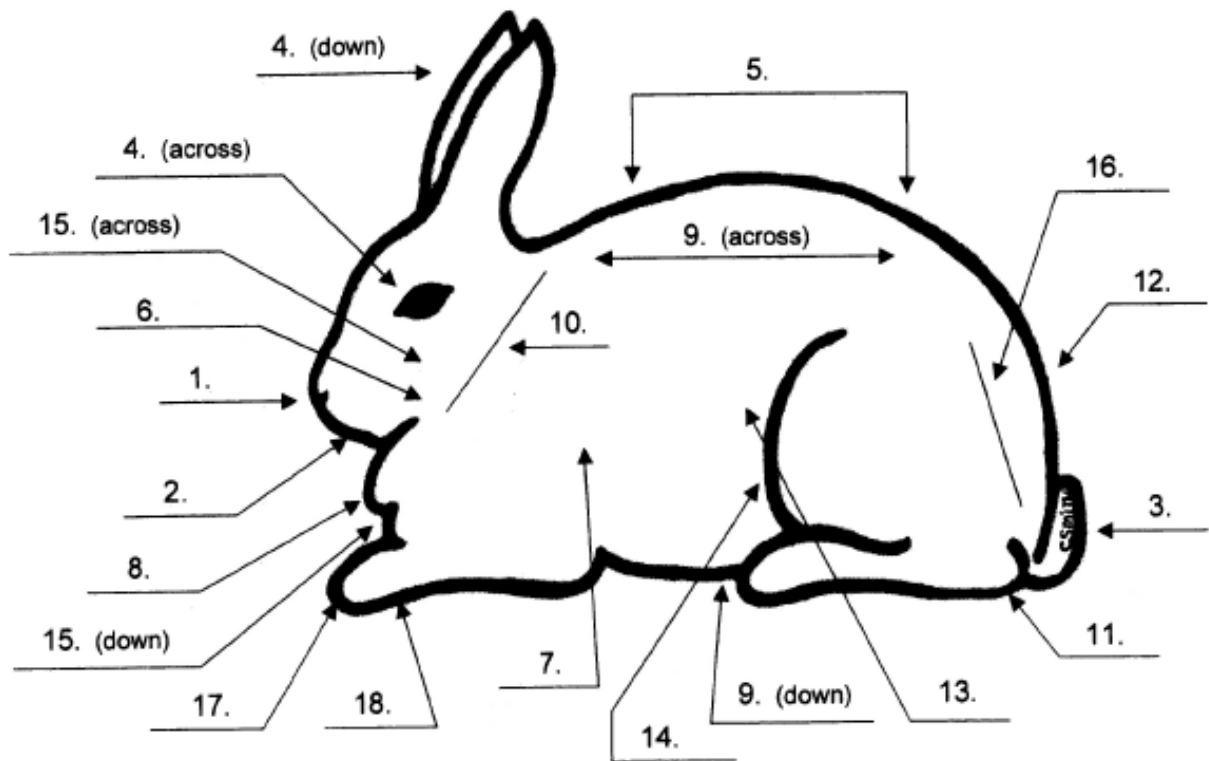
3. What breeds of rabbits do you have and what fur type do they have? Look up other breeds of rabbits and list their fur types to fill up all five lines. (Rabbit Resource Handbook, Chapter 3 - section, listed under individual breeds.)

Breed	Fur Type
1.	
2.	
3.	
4.	
5.	

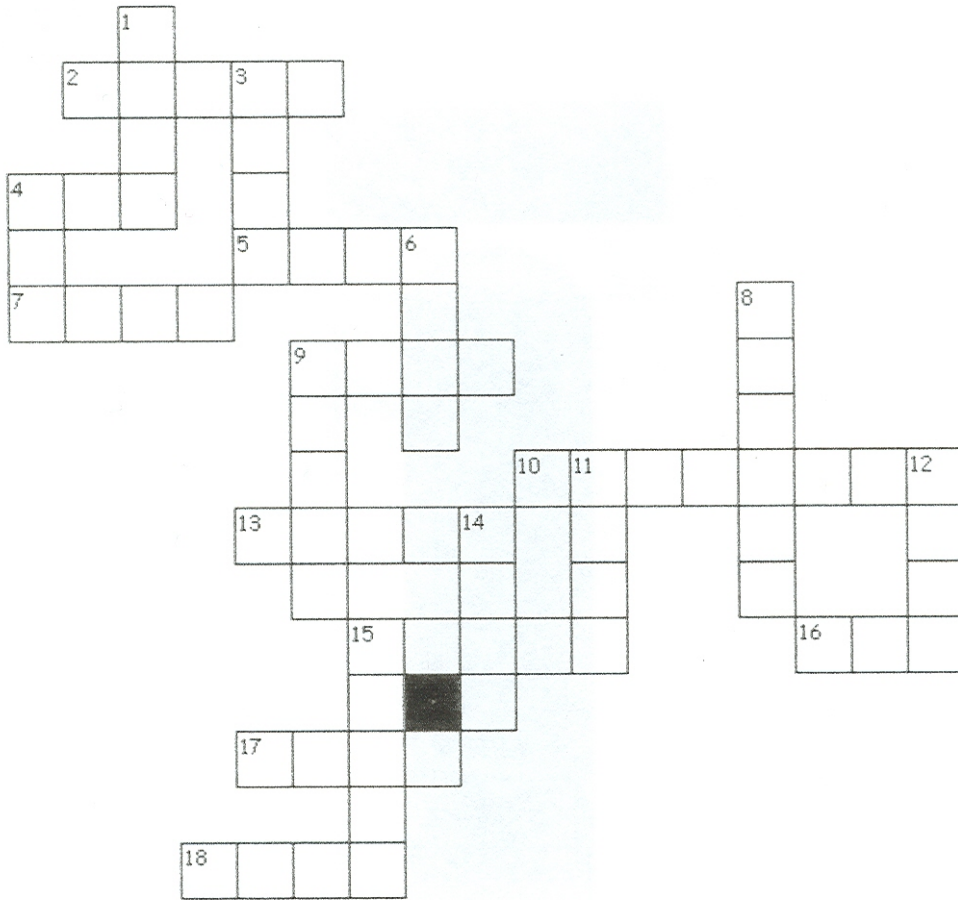
**Activity 2**

### Parts of a Rabbit

Complete the crossword puzzle by using the rabbit parts found in the rabbit diagram. Each word corresponds to one of the numbered parts on the diagram. Find the correct number on the crossword puzzle and write the word in. Word bank provided on next page for both the Parts of a Rabbit and the Rabbit Crossword. (Rabbit Resource Book Chapter 3)



# Parts of a Rabbit Crossword Puzzle



## Word Bank for Parts of a Rabbit diagram and the Crossword Puzzle

BACK  
DEWLAP  
FOOT  
LOIN  
RIBS  
TOES

BELLY  
EAR  
HIP  
MOUTH  
RUMP

CHEEK  
EYE  
HOCK  
NECK  
SHOULDER

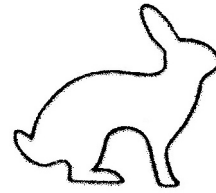
CHEST  
FLANK  
KNEE  
NOSE  
TAIL

**Activity 3**

**Body Types**



1. \_\_\_\_\_



2. \_\_\_\_\_



3. \_\_\_\_\_



4. \_\_\_\_\_



5. \_\_\_\_\_

**Identify and label the five body type profiles above.** (Rabbit Resource Handbook page 29.)

Name two breeds of rabbit for each body type except number four. (Rabbit Resource Handbook Chapter 3, listed under individual breeds.)

1. \_\_\_\_\_, \_\_\_\_\_

2. \_\_\_\_\_, \_\_\_\_\_

3. \_\_\_\_\_, \_\_\_\_\_

4. \_\_\_\_\_ (This is the only breed with this body type)

5. \_\_\_\_\_, \_\_\_\_\_

How many breeds of rabbits are recognized by the American Rabbit Breeders Association? \_\_\_\_\_ *Note: Reference the American Rabbit Breeders website for most current information.*

# *ALLEN COUNTY 4-H PRODUCTION RABBIT RECORD*



*Records serve as a way to measure your own success with a project. When answering these questions, you should be able to see where improvements can be made for next year and if you wish to continue with this project for another year.*

1. List types of feeds, hay, and conditioners that you feed to your rabbits.

Breed of Rabbit	Brand name of Feed	% of protein	Amount fed & frequency	Weight & cost of bag

Breed of Rabbit	Supplement	Amount fed & frequency	Cost

2. How many rabbits do you take care of in a year? \_\_\_\_\_

3. How many breeding animals do you have? \_\_\_\_\_

4. Do you sell your rabbits? \_\_\_\_\_

5. Who buys your rabbits and for what purpose? \_\_\_\_\_

6. How do you care for your animals in both hot and cold weather? Tell about housing, feeding and watering.

7. How often do you clean your cage trays? How often do you sanitize cages, feed and water dishes, and equipment?

8. List any tours, workshops, clinics, shows or contests that you may have participated in during the last year that pertained to rabbits.

9. What resources do you use to help you have a successful rabbitry? (List people, magazines, websites, etc.

10. List two new things that you have learned about rabbits this year?

11. Did you get a new breed of rabbit this year? If so, what breed and what have you learned about them?

\_\_\_\_\_ Complete v2.4online enrollment by January 15, 2021

\_\_\_\_\_ Completed Fair Entry on line by June 30, 2021

\_\_\_\_\_ Attach Copy of YQCA card

\_\_\_\_\_ Turn in Completed Activity Sheets & 2021 Allen County 4-H Rabbit ID Guide by June 30, 2021 to the Extension Office

## 4-H Production Rabbit Inventory

Do an inventory of all the breeds you raise. Make more charts on the back of this worksheet, if you have more than 4 breeds or more than one variety of a breed. Keeping records of your rabbitry over the years will help you see how far you have come. Knowing this information will help you make decisions on what to sell, breed, show or cull.

Name of 1st breed	Variety or (Color)	4 or 6 class	Total number
Senior Bucks			
Senior Does			
6/8 Bucks			
6/8 Does			
Junior Bucks			
Junior Does			
Kits (pre juniors)			<b>Grand Total of this breed</b>

Name of 2 <sup>nd</sup> breed	Variety or (Color)	4 or 6 class	Total number
Senior Bucks			
Senior Does			
6/8 Bucks			
6/8 Does			
Junior Bucks			
Junior Does			
Kits (pre juniors)			<b>Grand Total of this breed</b>



<b>Name of 3<sup>rd</sup> breed</b>	<b>Variety or (Color)</b>	<b>4 or 6 class</b>	<b>Total number</b>
Senior Bucks			
Senior Does			
6/8 Bucks			
6/8 Does			
Junior Bucks			
Junior Does			
Kits (pre juniors)			
			<b>Grand Total of this breed</b>

<b>Name of 4<sup>th</sup> breed</b>	<b>Variety or (Color)</b>	<b>4 or 6 class</b>	<b>Total number</b>
Senior Bucks			
Senior Does			
6/8 Bucks			
6/8 Does			
Junior Bucks			
Junior Does			
Kits (pre juniors)			
			<b>Grand Total of this breed</b>

***This Form DUE JUNE 30, 2021 –To the Allen County Extension Office***

Exhibitor's Name \_\_\_\_\_ Grade in School (1/1/2021) \_\_\_\_\_ 4-H Club \_\_\_\_\_

Emergency Contact Number for Fair – Home Phone \_\_\_\_\_ Cell Number \_\_\_\_\_ Parent(s) Name(s) \_\_\_\_\_

Members must list on this Rabbit Identification Guide the breed, variety, class, sex, and tattoos of all potential rabbits to be exhibited at the County Fair. Exhibitors can pre-enter up to 20 rabbits on the Rabbit online Fair Entry and exhibit up to 14. Exhibitor may show only one animal per class and may exhibit up to 3 breeds of rabbits, but more than 3 breeds can be listed. Write the tattoo down for the rabbit you intend to show. Only the tattoo can be changed at check in, providing the breed, variety, class and sex all stay the same. Meat Classes do not count as a breed. Meat Classes are listed separately from breeds on second page. 4-H member can only exhibit in two of the four meat classes, with the exception of first year members exhibiting in only one of the four meat class. Meat Pens and Single Fryers must get an assigned letter from leaders listed on this form. The assigned letter **MUST** appear on this ID form. All new rabbits in your rabbitry need to be purchased by April 15. This includes the doe used for your meat pen. Refer to Rule Book for more information. Only rabbits listed on this rabbit identification form may be exhibited. Remember to enter your rabbits on this form for the Breeders Class, because the Breeders Class it is not on the online entry. Breeders Class entry on page 2 of this ID form.

Breed	Variety Variety – Color	Class Junior, 6/8, or Senior	Sex Buck or Doe	Tattoo Use capital letters and numbers. Print clearly.	Fair Use	Replacement rabbit tattoo
<i>Example: Mini Rex</i>	<i>black</i>	<i>Junior</i>	<i>Buck</i>	<i>CJ587</i>		<b>Fair Use</b>
1.						
2.						
3.						
4.						
5.						
6.						
7.						
8.						
9.						
10.						
11.						
12.						

Breed	Variety Variety – Color	Class Junior, 6/8, or Senior	Sex Buck or Doe	Tattoo Use capital letters and numbers. Print clearly.	Fair Use	Fair Use Replacement rabbit tattoo
<i>Example: Mini Rex</i>	<i>black</i>	<i>Junior</i>	<i>Buck</i>	<i>CJ587</i>		
13.						<b>Fair Use</b>
14.						Pen Fees are \$1.00 per rabbit
15.						# of Rabbits to be shown
16.						\$ Collected
17.						4H Member's Initials
18.						4H Leader's Initials
19.						
20.						
<b>Breeder Class Rabbit – Breed Showing?</b>						

Single Fryers and Meat Pens **MUST** have an assigned tattoo letter on this form. \*\* To obtain your assigned tattoo letter for the meat pen and single fryer contact Shawn Parker first.

Cheryl Smith  
260-637-5502  
[cmlhoppers@msn.com](mailto:cmlhoppers@msn.com)

**I hereby certify that I own these rabbits and they are in my personal possession and under my daily care.**

\_\_\_\_\_  
Signature of 4-H member verifying that the information above is accurate.      Date

\_\_\_\_\_  
Signature of parent/guardian verifying that the information above is accurate.      Date

Meat Classes	Breed	<b>**Assigned Tattoo Letter and Tattoo of Roaster and Stewer</b>	Fair Use Check rabbits entered to be shown
Single Fryer**		**	
Meat Pen**		**	
Roaster		**	
Stewer		**	

**ALLEN COUNTY 2021 RABBIT IDENTIFICATION FORM**