

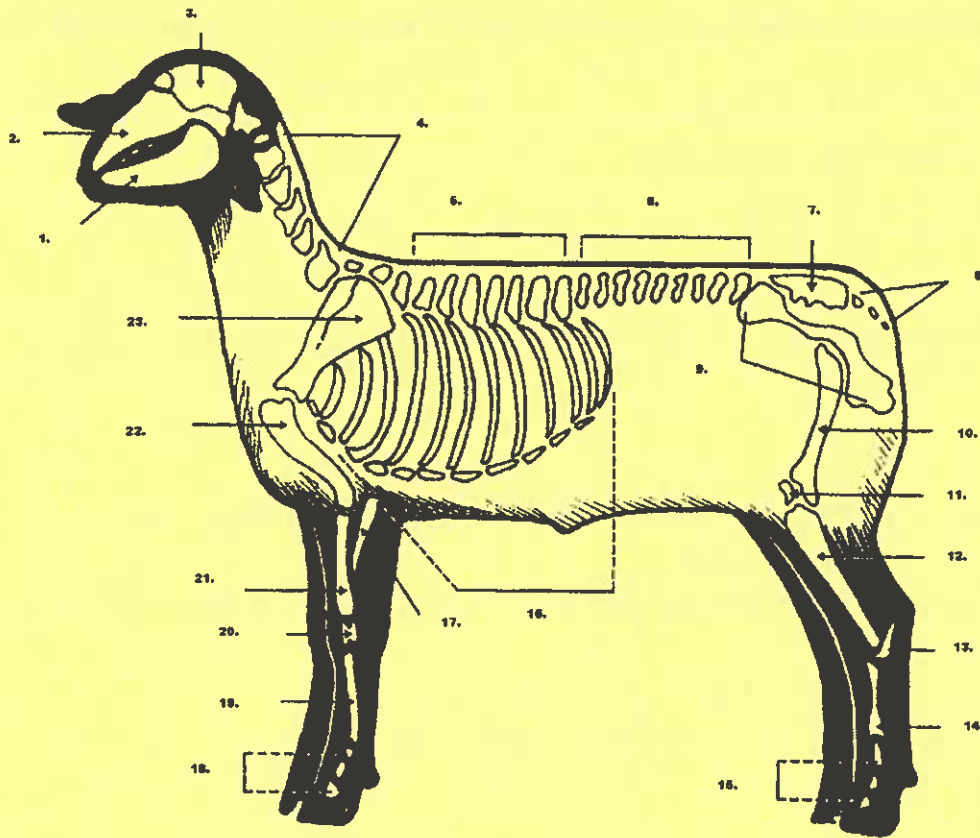
# White County 4-H Sheep Educational Activities – Grade 6

Project Year \_\_\_\_\_

4-H'er Name \_\_\_\_\_ Club \_\_\_\_\_

## Activity #1

Place corresponding number next to the bones listed below related to Chapter 2, "Selection" from the Ohio State Sheep Resource Handbook.



\_\_\_\_ Tarsal bones

\_\_\_\_ Sacrum

\_\_\_\_ Cranium

\_\_\_\_ Phalanges

\_\_\_\_ Femur

\_\_\_\_ Radius

\_\_\_\_ Scapula

\_\_\_\_ Ribs

\_\_\_\_ Metatarsal bones

\_\_\_\_ Tibia

\_\_\_\_ Ulna

\_\_\_\_ Mandible

\_\_\_\_ Cervical vertebrae

\_\_\_\_ Patella

\_\_\_\_ Humerus

\_\_\_\_ Maxilla

\_\_\_\_ Os coxae (pelvis)

\_\_\_\_ Thoracic vertebrae

\_\_\_\_ Carpal bones

\_\_\_\_ Lumbar vertebrae

\_\_\_\_ Metacarpal bones

\_\_\_\_ Coccygeal vertebrae

**White County 4-H**  
**Sheep Educational Activities – Grade 6**

Project Year \_\_\_\_\_

4-H'er Name \_\_\_\_\_ Club \_\_\_\_\_

**Activity #2**

Place answer the following questions related to Chapter 4, "Nutrition" from the Ohio State Sheep Resource Handbook.

1. No matter how good a lamb you start your project with, if it is not on a well-balanced diet, it will not develop to its potential.  
True False
2. At what age do you start lambs on creep feed?
  - a. 45 days
  - b. 20 days
  - c. 5-12 days
3. At what age do lambs get weaned?
  - a. 6-8 weeks
  - b. 1 year
  - c. 4 weeks
4. Flushing is the practice of getting the ewes to gain weight before the breeding season.  
True False
5. A balanced ration is one that will furnish the nutrients in the proportion needed to nourish the animal properly for 24 hours.  
True False
6. A young lamb will eat up to \_\_\_\_\_ of its body weight in dry matter.
  - a. 3%
  - b. 6%
  - c. 5%
7. A lactating animal will consume up to \_\_\_\_\_ of its body weight in dry matter.
  - a. 3%
  - b. 6%
  - c. 5%
8. A sheep must have a certain amount of roughage for proper digestion.  
True False

**White County 4-H**  
**Sheep Educational Activities – Grade 6**

Project Year \_\_\_\_\_

4-H'er Name \_\_\_\_\_ Club \_\_\_\_\_

**Activity #3**

Place answer True or False to the following questions related to Chapter 5, "Health Maintenance & Disease" from the Ohio State Sheep Resource Handbook.

\_\_\_\_\_ Do not mix new purchases with the flock for at least 30 days.

\_\_\_\_\_ Trim feet and soak in zinc sulfate solution when unloaded from new purchase or a show.

\_\_\_\_\_ Enterotoxemia is lice.

\_\_\_\_\_ External parasites may be treated with sprays or powders.

\_\_\_\_\_ Foot rot is not an infectious disease.

\_\_\_\_\_ Bottle jaw is a sign of internal parasites.

\_\_\_\_\_ Coccidiosis symptoms may include dark, bloody diarrhea.

\_\_\_\_\_ Pregnancy toxemia could also be hypoglycemia.

\_\_\_\_\_ Mastitis is a viral infection of the udder.

\_\_\_\_\_ A sheep's temperature should be 98.5.

