



# 4-H HORSE & PONY WORKSHEET

## Grade 8

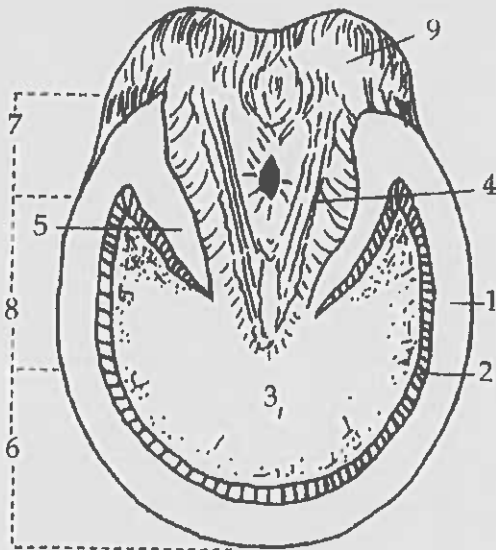


Name: \_\_\_\_\_ 4-H Club: \_\_\_\_\_

**Answers can be found in "Beginning Horse Management" Resource Book 4-H 174.**

**Use the section titled "Hoof Care and Dental Health" to answer the following questions:**

1. Match the number on the hoof diagram with the appropriate name of that part.



- \_\_\_\_\_ Bulb
- \_\_\_\_\_ Frog
- \_\_\_\_\_ Heel
- \_\_\_\_\_ Bar
- \_\_\_\_\_ Sole
- \_\_\_\_\_ Quarter
- \_\_\_\_\_ Toe
- \_\_\_\_\_ White Lane
- \_\_\_\_\_ Wall

2. List the four basic points in caring for a horses' feet.

- a. \_\_\_\_\_
- b. \_\_\_\_\_
- c. \_\_\_\_\_
- d. \_\_\_\_\_

3. Describe the process for picking up a horse's rear hoof.

---



---



---



---

4. \_\_\_\_\_ is the most common hoof disease.

5. Horseshoes protect the hoof against \_\_\_\_\_.

6. How fast do healthy feet grow?

---

---

7. How do you care for dry brittle hooves?

---

---

---

8. List four reasons you would put shoes on a horse.

- a. 

---
- b. 

---
- c. 

---
- d. 

---

9. What signs indicate your horse's shoes need to be reset?

---

---

---

---

Answer the following general questions:

10. Without naming any names, discuss a practice that you have seen or heard about that you think was an unethical practice in relationship to showing an animal.

---

---

---

---

11. In thinking about your answer to the previous question, why do you feel that this practice was wrong?

---

---

---

---