



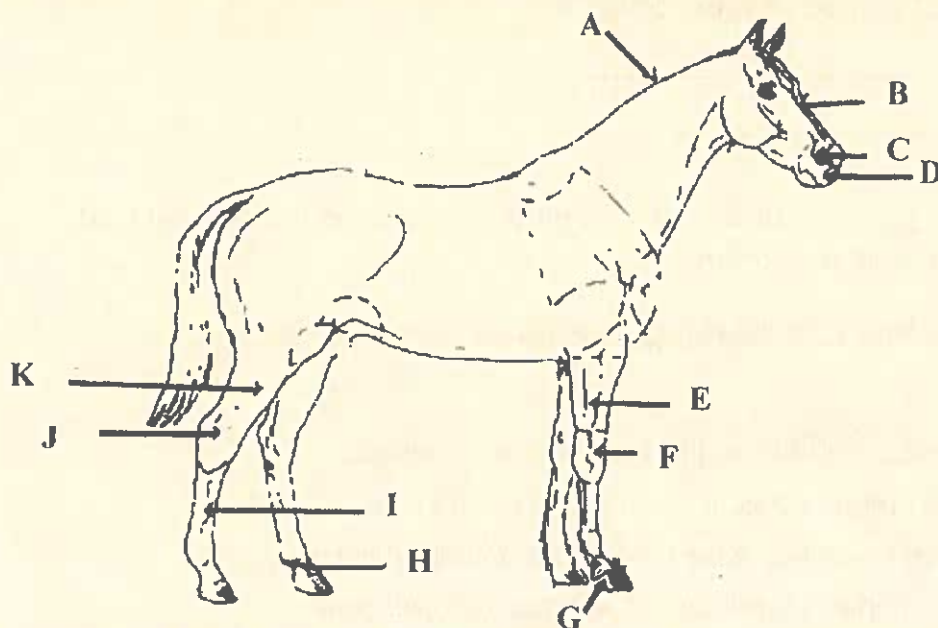
# 4-H HORSE & PONY WORKSHEET

## Grade 4



Name: \_\_\_\_\_ 4-H Club \_\_\_\_\_

Answers can be found in "Beginning Horse Management" Resource Book 4-H 174.



1. Place the letter from the above picture with the matching body part.

- |                |              |                |               |
|----------------|--------------|----------------|---------------|
| _____ Cannon   | _____ Crest  | _____ Fetlock  | _____ Forearm |
| _____ Forehead | _____ Gaskin | _____ Hock     | _____ Hoof    |
| _____ Knee     | _____ Muzzle | _____ Nostrils |               |

Use the chapter titled "Horse Types and Uses, and Breeds of Horses" to fill in the following blanks.

2. List the three primary horse breeds used for racing.

\_\_\_\_\_

3. \_\_\_\_\_ horses were originally developed for working livestock on ranches and for short distance racing

4. The \_\_\_\_\_ are best known for their smooth, ground-covering, easy-traveling gaits.

5. The five common pony breeds are

---

---

6. What are four qualities of a good hunter horse?

---

---

7. The \_\_\_\_\_ horse was originally developed for farming and to transport freight across our nation.

**Use the chapter titled "Colors and Marking of Horses" to complete the following questions.**

8. Put the letter of correct description next to the color it matches.

- |                |                                                                                                       |
|----------------|-------------------------------------------------------------------------------------------------------|
| _____ Bay      | A. Has irregular patches in more than one color                                                       |
| _____ Paint    | B. Most so-called white horses are actually this color.                                               |
| _____ Gray     | C. This horse is a mixture of red and yellow/brown                                                    |
| _____ Brown    | D. The body color can range from light yellow to bright copper.                                       |
| _____ Palomino | E. This color of horse is made up of both brown and black hair and the mane and tail are always dark. |

9. Identify your horse's breed and color. Then describe the primary use for that breed of horse.

---

---

10. What breed of horse do you prefer and why?

---

---

---

---