

White County 4-H Beef Educational Activities – 9th Grade

Project Year _____

4-H'er Name _____ Club _____

Activity #1 - How to Read a Feed Tag

MGA HEIFER SUPPLEMENT MEDICATED

SUPPLEMENT FOR GROWING, FINISHING BEEF HEIFERS
FOR INCREASED RATE OF WEIGHT GAIN, IMPROVED FEED
EFFICIENCY AND SUPPRESSION OF ESTRUS HEAT IN HEIFERS
FED FOR SLAUGHTER

ACTIVE DRUG INGREDIENT

MELNGESTROL ACETATE 0.00022%
(EQUIVALENT TO 0.00022%)

GUARANTEED ANALYSIS

CRUDE PROTEIN	MIN. 10.00%
SALT	MIN. 4.50%
CRUDE FAT	MIN. 2.00%
SALT	MAX. 5.50%
CRUDE FIBER	MAX. 25.00%
POTASSIUM	MIN. 0.60%
CALCIUM	MIN. 5.50%
SELENIUM	MIN. 13.00 PPM
CALCIUM	MAX. 6.50%
VITAMIN A	MIN. 100,000.0 IU/LB.

INGREDIENTS

PROCESSED GRAIN BY PRODUCTS, ROUGHAGE PRODUCTS,
GROUND LIMESTONE, SALT, POTASSIUM SULFATE, MAGNESIUM
SULFATE, SODIUM SELENITE, VITAMIN A ACETATE, VITAMIN D3
SUPPLEMENT, VITAMIN E SUPPLEMENT, ZINC SULFATE, ZINC
OXIDE, COPPER SULFATE, MANGANOUS OXIDE, CALCIUM
IODATE, COBALT CARBONATE, FERROUS SULFATE

FEEDING DIRECTIONS

EACH POUND OF SUPPLEMENT WILL PROVIDE 1.0 MG. OF
MELNGESTROL ACETATE. THOROUGHLY MIX AND FEED AT THE
RATE OF 0.5 LB. PER HEAD, PER DAY TO PROVIDE 0.5 MG OF
MELNGESTROL ACETATE PER HEAD, PER DAY. FEED CONTINU-
OUSLY THROUGHOUT THE PERIOD HEIFERS ARE BEING GROWN
AND FINISHED FOR SLAUGHTER. THIS SUPPLEMENT SHOULD BE
FED IN CONTROLLED AMOUNTS WITH ROUGHAGE AND OTHER
FEED INGREDIENTS.

NOTE: NOT EFFECTIVE FOR SPAYED HEIFERS OR STEERS.

SEE WEIGHT 50 POUNDS (22.7 KILOGRAMS)
OR AS SHOWN ON SHIPPING DOCUMENT

MANUFACTURED BY: SKILLATHON FEED

How to Read a Feed Tag

MGA Heifer Supplement Feed Tag Questions

1. What is the main ingredient in this feed?

2. What is the active drug ingredient in this
ration? _____

3. For how many days prior to harvest
(slaughter) should this feed be
removed? _____

4. What is the minimum crude fat level of
this diet? _____

5. What is the minimum crude protein level
for this diet? _____

Ohio State University Extension

Adapted from materials created by Dan Frobose, Agriculture
and Natural Resources Agent, Wood County.

White County 4-H
Beef Educational Activities – 9th Grade
Project Year _____

4-H'er Name _____ Club _____

Activity # 2

- T or F 1. Never inject more than 10cc of a medication per injection site.
- T or F 2. Veterinary drugs are sold in 2 categories, over the counter and prescription.
- T or F 3. Use a short needle when giving an intramuscular injection (IM).
- T or F 4. Hardware disease is caused by an animal swallowing metal.
- T or F 5. Ammonia & hydrogen sulfide are the primary odor-causing components.
- T or F 6. Genetic characteristics are passed from generation to generation is known as heredity.
- T or F 7. The abomasums is called the true stomach and is similar to the human stomach.
- T or F 8. The frame score of an animal is based on the height of an animal at the shoulders.
- T or F 9. Parasites are organisms that live off another animal.
- T or F 10. Water, energy, protein, minerals, and vitamins are essential nutrients for beef cattle.

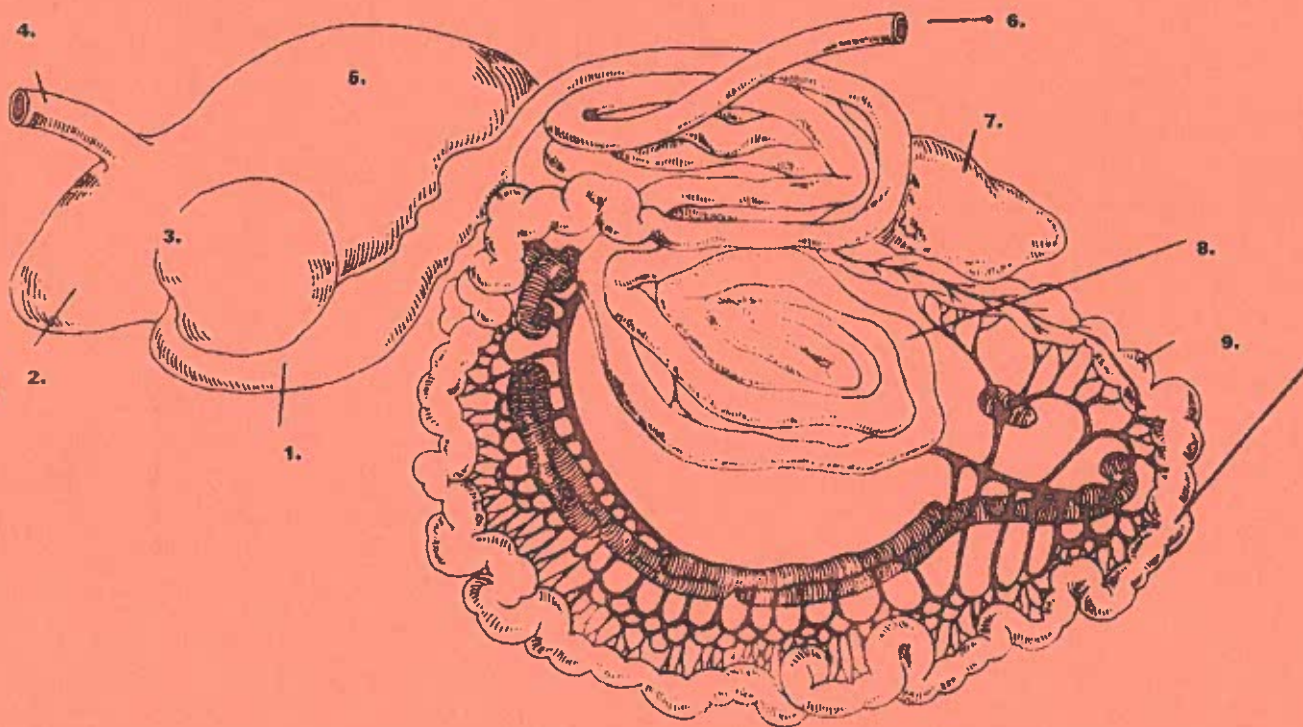
White County 4-H
Beef Educational Activities – 9th Grade

Project Year _____

4-H'er Name _____ Club _____

Activity #3 - Parts of the Ruminant Digestive System

List the corresponding number in front of the parts.



_____ Cecum

_____ Esophagus

_____ Abomasum

_____ Large Intestine

_____ Rumen

_____ Omasum

_____ Reticulum

_____ Anus

_____ Small Intestine

