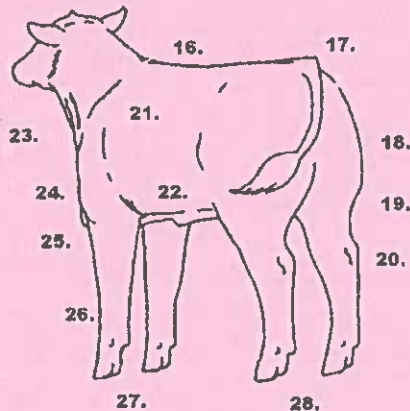
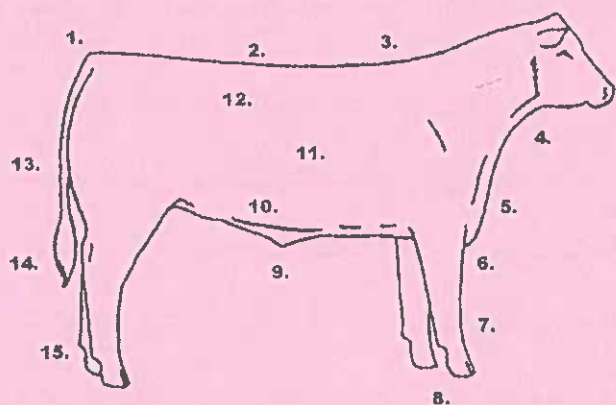


# White County 4-H Beef Educational Activities – 5<sup>th</sup> Grade

Project Year \_\_\_\_\_

4-H'er Name \_\_\_\_\_ Club \_\_\_\_\_

## Activity #1 - Describing the Ideal Steer



Write the ideal steer description that corresponds with the numbered body area.

- 1. \_\_\_\_\_
- 2. \_\_\_\_\_
- 3. \_\_\_\_\_
- 4. \_\_\_\_\_
- 5. \_\_\_\_\_
- 6. \_\_\_\_\_
- 7. \_\_\_\_\_
- 8. \_\_\_\_\_
- 9. \_\_\_\_\_
- 10. \_\_\_\_\_
- 11. \_\_\_\_\_
- 12. \_\_\_\_\_
- 13. \_\_\_\_\_

- 14. \_\_\_\_\_
- 15. \_\_\_\_\_
- 16. \_\_\_\_\_
- 17. \_\_\_\_\_
- 18. \_\_\_\_\_
- 19. \_\_\_\_\_
- 20. \_\_\_\_\_
- 21. \_\_\_\_\_
- 22. \_\_\_\_\_
- 23. \_\_\_\_\_
- 24. \_\_\_\_\_
- 25. \_\_\_\_\_

**White County 4-H**  
**Beef Educational Activities – 5<sup>th</sup> grade**  
Project Year \_\_\_\_\_

4-H'er Name \_\_\_\_\_ Club \_\_\_\_\_

**Activity #2 - Show Equipment Supply List**

List 10 grooming supplies needed for showing.

1. \_\_\_\_\_
2. \_\_\_\_\_
3. \_\_\_\_\_
4. \_\_\_\_\_
5. \_\_\_\_\_

6. \_\_\_\_\_
7. \_\_\_\_\_
8. \_\_\_\_\_
9. \_\_\_\_\_
10. \_\_\_\_\_

List 4 show washing supplies.

1. \_\_\_\_\_
2. \_\_\_\_\_

3. \_\_\_\_\_
4. \_\_\_\_\_

List 4 show ring supplies.

1. \_\_\_\_\_
2. \_\_\_\_\_

3. \_\_\_\_\_
4. \_\_\_\_\_

List 6 other supplies you will need.

1. \_\_\_\_\_
2. \_\_\_\_\_
3. \_\_\_\_\_

4. \_\_\_\_\_
5. \_\_\_\_\_
6. \_\_\_\_\_

**White County 4-H**  
**Beef Educational Activities – 5<sup>th</sup> Grade**  
Project Year \_\_\_\_\_

4-H'er Name \_\_\_\_\_ Club \_\_\_\_\_

***Activity #3 - Classifying Feed Ingredients Into Nutrient Groups***

- T or F    1. Fish Meal is classified as a/an Protein
- T or F    2. Corn is not classified as a/an Energy
- T or F    3. Wheat is classified as a/an Energy
- T or F    4. White Salt is classified as a/an Mineral
- T or F    5. A complete pelleted feed contains, carbohydrates, proteins, minerals, and vitamins
- T or F    6. Whole Grain Barley is classified as a/an Vitamin
- T or F    7. Linseed Meal is classified as a/an Protein
- T or F    8. Ground Limestone is classified as a/an Mineral
- T or F    9. Molasses is classified as a/an Energy
- T or F    10. Corn Gluten Meal is classified as a/an Protein

