

# Mini 4-H

## Garden Project

### Warren County



Name: \_\_\_\_\_

Club: \_\_\_\_\_

# Mini Garden Project Instructions

**Adult Help May Be Needed for Projects and Activities.**

Project Options: (Choose One)

1. 2 Liter Terrarium
2. Fantastical Plant
3. Grow a Vegetable



Complete two of the following activities:

1. Plant Parts We Eat
2. Design a Garden
3. Leaves - Different Shapes-Different Sizes

Bring all of the following to the Mini 4-H Check-In at the Fair.  
(Check Green 4-H Handbook & Newsletters for Date and Time)

1. Your Project
2. Your Completed Activities
3. Your Completed Record Sheet



*Have a Great Time Learning  
About Vegetable and Flower  
Gardening.*

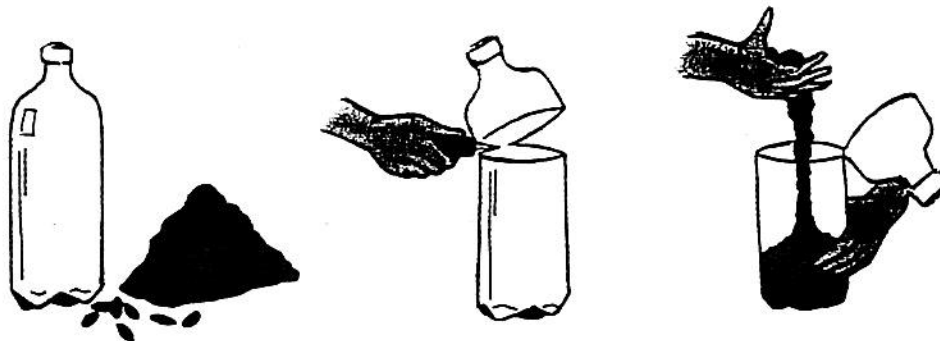
*If you wish to continue in this area when  
you enter 4-H you may take the  
Flowers Project or the Garden Project.*

Many of these projects and activities have been taken from  
The Junior Master Gardener Program, Texas A&M University

# Directions For 2 Liter Terrarium Project

A good way to learn how plants develop from seed to a mature plant is to use a terrarium. A terrarium is a special container that keeps plants warm and moist. You can make a terrarium from a 2 liter bottle. You should start this project at least 3 to 4 weeks before the Warren County Fair.

- Have an adult help you cut off the spout end of the bottle about 4 inches from the very top.
- Fill the bottom part of the bottle with soil (about 1/2 to 3/4 full).
- Plant 4 or 5 seeds, use something like radishes, leaf lettuce, or rye grass.
- Water until the soil is slightly damp.
- Turn the spout end upside down and set it in the bottle.
- Grow the plant for at about 3 weeks.
- Write down your name, 4-H club name, the type of plant you have planted, and what you see happening each week in the box at the bottom of this page (or use a small index card).
- Before bringing this project to check-in at the Fair cut the bottom part of this page off and tape it to your terrarium.



Warren County MINI 4-H	
NAME:	4-H CLUB
Project: MINI GARDEN	Type of Plant:
<b>What I See:</b>	
1st Week	
2nd Week	
3rd Week	

# Directions For Fantastical Plant Parts Project

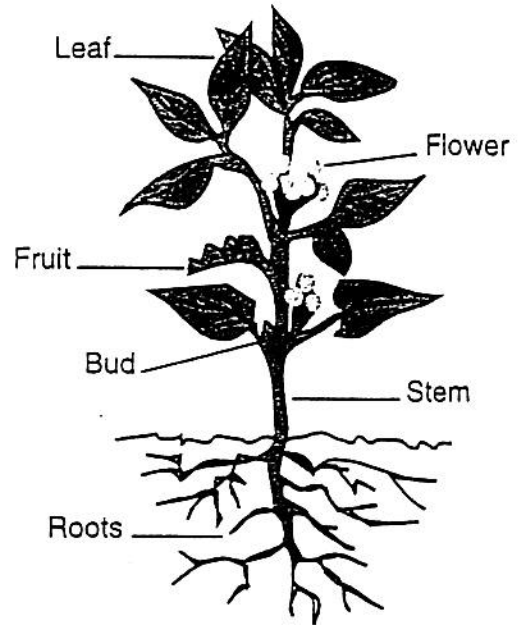
Plants are amazing. A plant has many different parts. The plant's parts work together just like your body parts work together. The plant roots are found in the soil. They carry water and nutrients to the plant. The stem supports the plant and carries water and nutrients throughout the plant. Leaves use sunlight to make food for the plant. Flowers are usually the bright colorful part of the plant. When the flower of the plant is pollinated by insects or wind they produce seeds that are stored in the fruit of the plant.

Wow, Plants are Fantastical.

Create your own Fantastical Plant by using things that you find around your home, such as, straws, buttons, string, balloons, pencils, pieces of cloth, construction paper pieces, or anything else that you can find.

- Get a Poster Board (22"X28") or comparable size. **Any Color.**
- Setting the poster board horizontally, glue on items found, making your own plant.
- Be sure your plant has roots, stems, leaves, flowers, fruit, and seeds.
- Label with Crayons, Markers or Pen the 6 parts of your plant - (roots, stem, leaves, flower, fruit, and seed)

Fill in the bottom portion of this page with your Name, 4-H Club and the type of plant you created (or use a small index card with the same information). Cut it out, then glue or tape it to the bottom right hand corner of your poster before you bring it to check-in at the Fair.

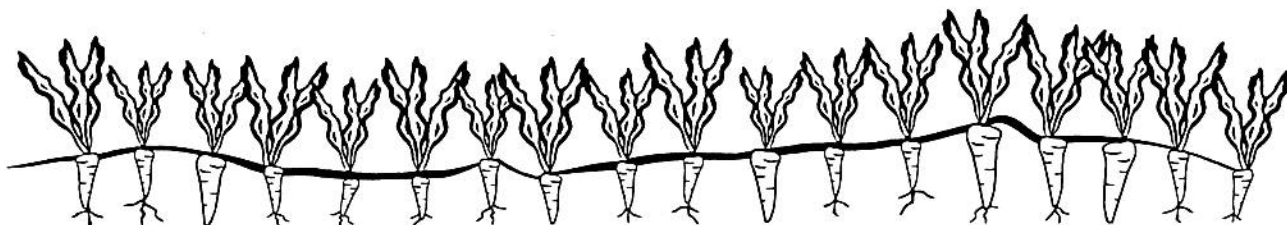


Warren County MINI 4-H	
Name:	4-H Club:
Project: 4-H MINI GARDEN	Plant Type:

# Directions for Growing a Vegetable Project

*A Vegetable Garden is fun to plant, and at harvest time you can eat what you planted.*

- Select an area outside to plant a few vegetables. You may want an area 4 foot long by 2 foot wide. Make sure there is good soil and at least 6 hours of sunlight every day. Also, check and make sure it is OK to dig it up for vegetables.
- Dig up and work the soil - preparing it for planting.
- You can pick any kind of vegetable that you want to plant. Some suggestions; radishes, peas, green beans, carrots, or onions. Radishes, peas, carrots & green beans are grown from seed - Onions are grown from seedlings known as sets.
- Read all instructions on the seed packet. It will tell you how deep to plant, how far apart you should plant the seeds and how many days until harvest. If you buy onion sets ask the people at the greenhouse where you bought them about planting.
- Make sure you check to see when the 4-H Fair is so you can calculate your planting date.
- After you plant your vegetables water the soil until damp.
- Check the garden every few days to see the progress and pull any weeds that may come up. Also you may need to water once in awhile if it gets dry. Do not work in your garden if it is real wet or muddy - this causes the soil to become hard and chunky.
- When you harvest for the fair, pick which vegetable you want to display and place three of them on a paper plate covering them with cellophane wrap.
- Attach a 3X5 card with your name, 4-H Club, Mini Project name and the type of vegetable you are displaying to your project and bring to the fair.



# Mini Garden 4-H Activities

## Select Two

### 1. Plant Parts We Eat.

In this activity we will identify the various plant parts used for food. On one of the inserted activity sheets you will find a food web. There is a different plant part on each circle. Make each food circle a different color. Then find the food on the list that is from a particular plant part and write the name of that food on the line.

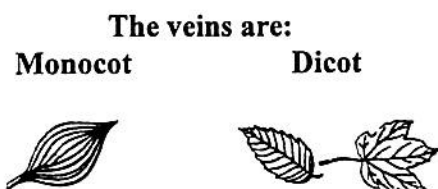
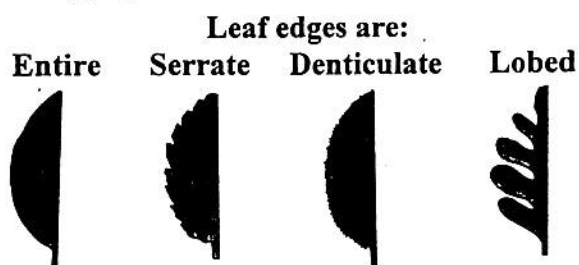
### 2. Design A Garden.

In this activity we will learn how to plan out a garden. On the inserted sheet you will find a garden outline 8 Feet X 15 Feet. Each square of the garden represents one square foot. Plan on Tomatoes, Lettuce, Radishes, Squash, Green Onions, and Green Beans. If you have a favorite vegetable add it to your garden. Figure out how you can arrange each vegetable planting to get the most out of the space you have. Draw a picture of each vegetable beside the name of it at the top. Then draw and/or color your vegetables in the garden. Remember different vegetables need different amounts of space.

- Tomatoes - Each tomato plant will take two squares. Allow 2 squares between the rows.
- Squash - usually planted in hills and needs a lot of room. One plant for about four squares.
- Green Onions - Can plant 9 in each square. Remember to leave walking space between the rows.
- Green Beans - Seeds should be planted 6 to a square. Should have one blank square between rows.
- Radishes - Can place 16 in each square. Leaving a square between rows.
- Lettuce - Plant one plant per square. Rows should be a square apart.

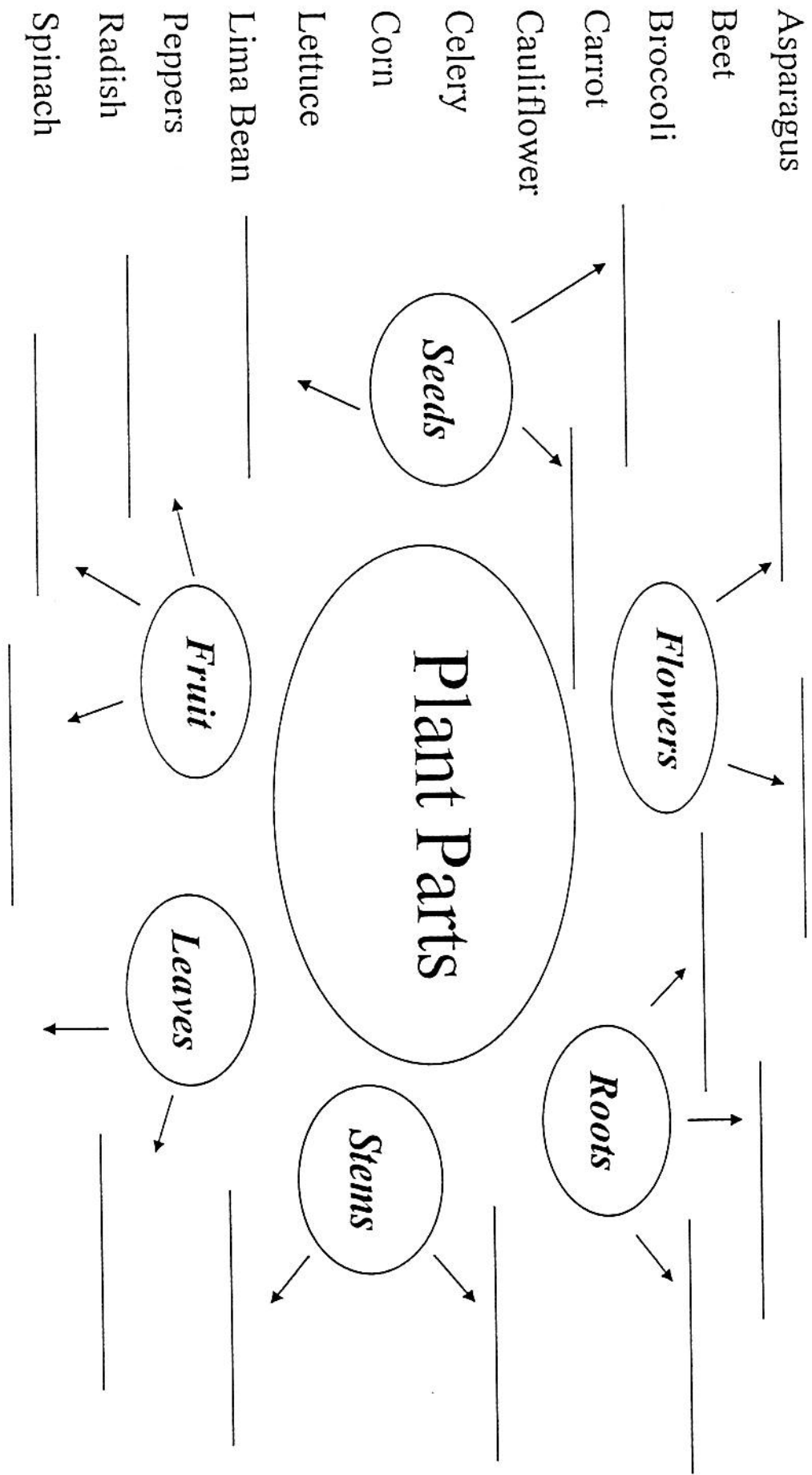
### 3. Leaves - Different Shapes-Different Sizes.

In this activity we will learn how leaves can help identify plants. Leaves come in a lot of shapes and sizes. People who study plants use the leaves to help identify the plant. They study the leaf edges, size and how the veins run.



On the inserted sheet you will find 2 boxes. Find 2 different types of leaves. Place one in each box under the sheet of paper. Take the paper off of a crayon and then rub over the leaf pattern on the paper. Continue rubbing over leaves until you have the boxes filled. Then write on the lines in the box whether that leaf is a monocot or dicot and what kind of edge it has.

# Plant Parts We Eat - Mini Garden 4-H Activity



- Asparagus
- Beet
- Broccoli
- Carrot
- Cauliflower
- Celery
- Corn
- Lettuce
- Lima Bean
- Peppers
- Radish
- Spinach
- Sunflower
- Tomato
- Watermelon

**NAME:** \_\_\_\_\_





# Leaves - Different Shapes-Different Sizes

## Mini Garden 4-H Activity

Name \_\_\_\_\_

<hr/> <hr/>	<hr/> <hr/>
-------------	-------------

# Mini Garden Project Record Sheet

Name:	
Address:	Zip:
School:	Township:

1. Which one of the three project choices did you choose?

\_\_\_\_\_

2. How much did your project cost? \_\_\_\_\_

3. How many hours did it take to complete your project? \_\_\_\_\_

4. What did you learn while working on your project? \_\_\_\_\_

\_\_\_\_\_

\_\_\_\_\_

5. What did you learn from the activities? \_\_\_\_\_

\_\_\_\_\_

\_\_\_\_\_

6. Did you enjoy the Mini 4-H Program? \_\_\_\_\_

7. Do you have any suggestions for the Mini 4-H Program?

\_\_\_\_\_

\_\_\_\_\_

Acknowledgement of Completion: \_\_\_\_\_

Parents Signature