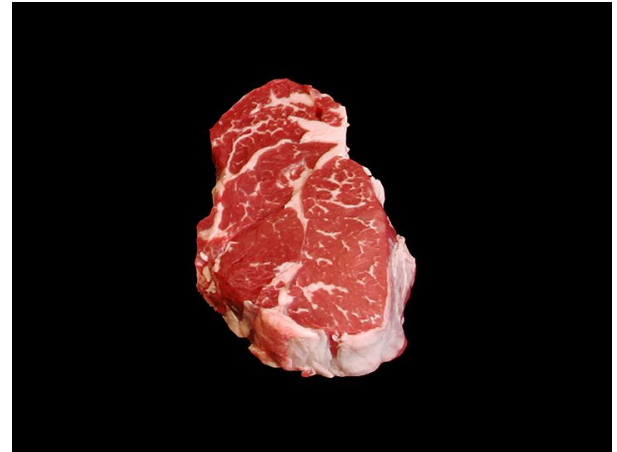


Retail Meat ID

Species: Beef

Primal: Rib

Retail: Ribeye Steak, Boneless



Species: Beef

Primal: Chuck

Retail: Arm Pot-Roast



Species: Beef

Primal: Round

Retail: Round Steak



Species: Beef

Primal: Brisket

Retail: Whole Boneless Brisket



Species: Beef

Primal: Plate

Retail: Short Ribs



Species: Beef

Primal: Round

Retail: Bottom Round Rump Roast



Species: Pork

Primal: Loin

Retail: Loin Chops



Species: Pork

Primal: Side

Retail: Sliced Bacon



Species: Pork

Primal: Spareribs

Retail: Spareribs



Species: Pork

Primal: Ham/Leg

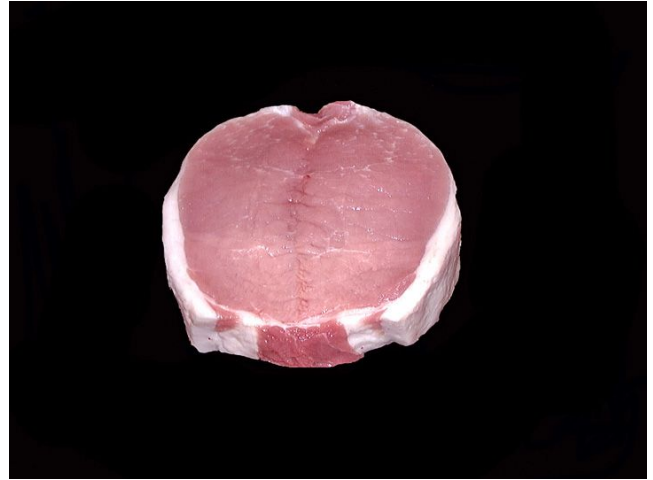
Retail: Pork Fresh Ham Shank Portion



Species: Pork

Primal: Loin

Retail: Butterflied Chops Boneless



Species: Lamb

Primal: Rib

Retail: Rib Chop



Species: Lamb

Primal: Leg

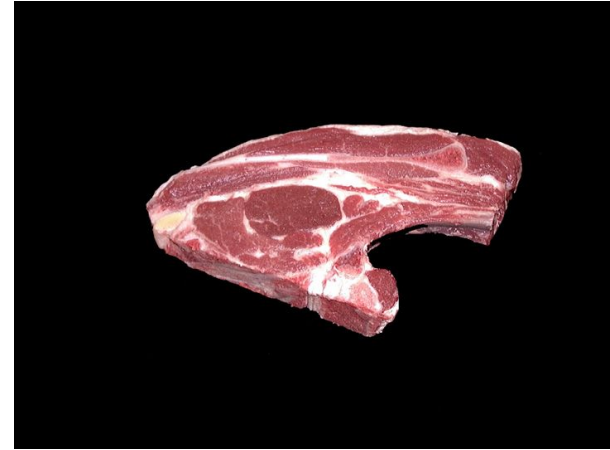
Retail: Sirloin Half



Species: Lamb

Primal: Shoulder

Retail: Blade Chops



Species: Pork

Primal: Loin

Retail: Whole Tenderloin



Species: Rabbit

Primal: Hind Leg

Retail: Hindshank



Species: Rabbit

Primal: Saddle

Retail: Boneless Saddle



Species: Rabbit

Primal: Loin

Retail: Boneless Loin



Species:Poultry

Primal: Leg

Retail: Drumstick



Species:Poultry

Primal: Breast

Retail: Breast



Species:Poultry

Primal: Thigh

Retail: Boneless Thigh

