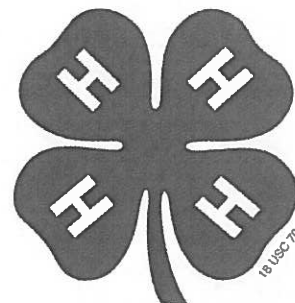


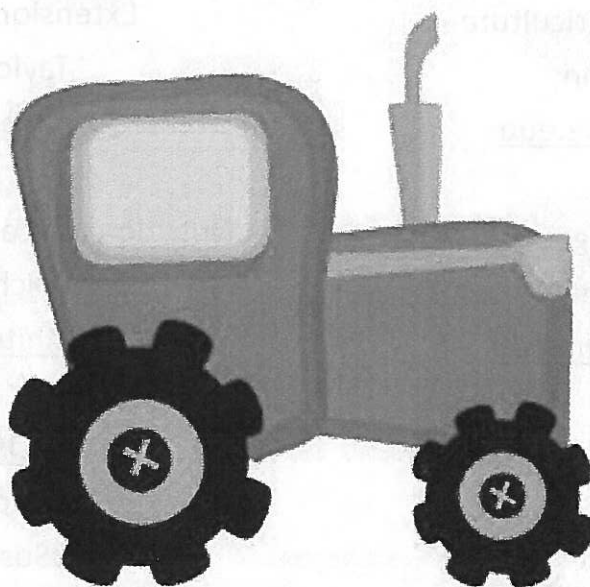
PURDUE
EXTENSION

LOCAL FACES
COUNTLESS CONNECTIONS



Mini 4-H

TRACTOR



An Introduction to 4-H for Youth in Grades K, 1 & 2

Developed by Purdue Extension—Elkhart County

17746 County Road 34, Ste E Goshen, IN 46528

Revised September 2014

Purdue University is an equal access/ equal opportunity institution.

Purdue Cooperative Extension Service

Vanderburgh County Office

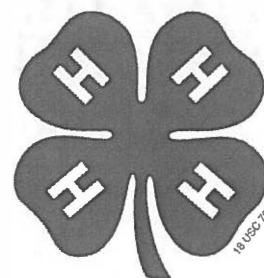
13301 Darmstadt Road– Suite A

Evansville IN 47725-9593

Phone: 812-435-5287 or 812-867-4935

Fax: 867-4944

www.extension.purdue.edu/vanderburgh



County Extension Staff

Health & Human Sciences

Meagan Brothers

brotherm@purdue.edu

Urban Agriculture

Meagan Diss

mcdiss@purdue.edu

Nutrition Education Program Assistant

Tiffany Haug

thaug@purdue.edu

Community Wellness Coordinator

Lacy Wilson

wilso766@purdue.edu

Community Wellness Coordinator

Casey Williams

will1582@purdue.edu

Nutrition Education Program Assistant

Carolyn Schmidt

cjschmidt@purdue.edu

4-H/ Youth Development

Megan Hoffherr

mkron@purdue.edu

Extension Youth Assistant

Taylor VanMeter

tvanmet@purdue.edu

Nutrition Education Program Assistant

Michele Wilhite

mwilhite@purdue.edu

Office Staff

Office Manager

Susan English

englishs@purdue.edu

Secretary

Edwina "Winnie" McConnell

emcconne@purdue.edu


Secretary

Jami McGill

mcgill11@purdue.edu

OUR STAFF

Mini 4-H Helper's Page



Welcome to the Mini 4-H Program! Mini 4-H is designed for children in grades K-2 to explore a variety of project activity areas and to interact with caring adults and other children.


Children receive this project activity manual when they enroll in Mini 4-H. This manual, and the manuals on various other topics, will provide fun, age-appropriate learning activities throughout their year(s) in Mini 4-H.

As a Mini 4-H adult helper, your job will be to guide and encourage each child through the activities. A wide range of activities is provided to allow you to choose the ones most appropriate for the children you are working with. It is strongly suggested that you do not complete the activities for them. Instead, help them, guide them, work with them, and let them do all that they possibly can. 4-H believes in allowing children to learn by doing. The Mini 4-H project activities are hands-on learning opportunities designed to provide a meaningful educational experience for youth.

Additionally, the Mini 4-H program is set up to allow children to display a project activity that is based upon information in this manual. Some children may want to exhibit at the fair. The fair is an exciting week that allows community youth to showcase their enthusiasm for learning. Children may choose to display a project activity they did themselves or one they did with a group. Other children may choose to showcase their work in other ways, such as displaying it in a special place in their home.

Mini 4-H is fun! Children will certainly enjoy it! You can have fun too, by guiding and helping as children participate in the program. Encourage and praise the children as they have fun learning and sharing with you. If you have any questions regarding Mini 4-H or other 4-H programs, please contact the Extension Office in your county.

Helper's Tips



The Mini 4-H program can be used with individual children, but it works best when used in a group of 2 or more children. Children working cooperatively in groups develop positive images of themselves and their ideas. Other ways adult helpers can maximize the benefits of Mini 4-H are to:

- **Work on a subject interesting to the child by encouraging children to choose the content area.** Look through this manual and choose the project activities based on the interests and skill levels of the children.
- **Relax and have fun.** Some children will want to finish their activities, others may not. There is no need to pressure children of this age to finish an activity, because the real learning takes place while they participate in the activity and interact with others. The finished product should not be the main focus. The knowledge children gain while they explore new areas and experiment with new ideas should be the primary goal.
- **Remain flexible and adapt to the changing needs of the children.** Restlessness or boredom may indicate a need to stop the activity and come back to it later.
- **Encourage the children to talk and work with each other.** Children learn best when they are encouraged to freely share their reactions and observations. You may want to ask the children about what they did during an activity, what happened, what was the most difficult, what was the easiest, and what they liked the most.

This manual contains activities for children that allow for a wide range of abilities and provide practice for developing a variety of skills.

Mini 4-H'ers Page

Mini 4-H'ers have lots of fun! There are many activities for you to explore. You can try new things. You can share them with your friends and family.

Here are some things to know about 4-H:

The 4-H symbol is a four-leaf clover with an "H" in each leaf. Clover is plant that grows in fields, yards, and along roadsides. Most clovers have three leaves. Sometimes, if you look very carefully, you may get lucky and find a special clover with four leaves. A four-leaf clover is used as the symbol for 4-H to let everyone know 4-H is a special kind of group.

The 4-H colors are green and white. The four-leaf clover is green and the "H" in each leaf is white.



A group motto is a saying that tells people what is important to the group. **The 4-H motto** is "To make the best better." When something is better than all of the others, it is the best. Think about a time when you did your best. Maybe you threw a ball farther than you have ever thrown it before. Now, think about some ways you could do better. You may be able to throw farther by practicing for a while or by watching someone who can throw farther than you to see how they throw so far. Even if you throw the ball farther than you have ever thrown it before, there are still ways that you can do better the next time. 4-H encourages you to always try to do better, even if you are doing the best you have ever done.

The 4-H Pledge


A pledge is a promise you make to yourself and to the people around you. The 4-H pledge is in bold print below. Under each line of the pledge there are words telling what the pledge means.

I pledge my **Head**  to clearer thinking,

I promise to use my head to make good choices.

my **Heart**  to greater loyalty,

to use my heart to be a good friend.

my **Hands**  to larger service, and

to use my hands to do helpful things for others.

my **Health**  to better living,

to take care of my body and to show others how to live in a healthy way.

for my club, my community,  my country, and my world.

to help my group, my community, my country, and my world be happy and safe for everyone.

ACTIVITY 1 - IDENTIFY PARTS

Materials needed for this activity:

Pencil

What you will do:

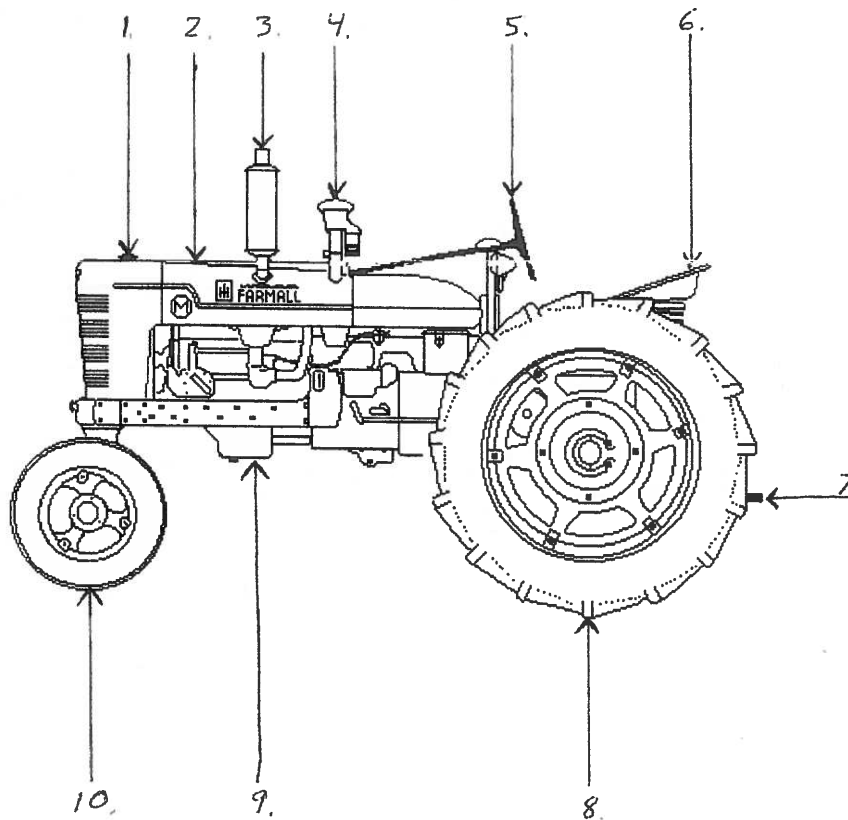
- 1- Look at the picture of the tractor. You will see numbers pointing to certain parts of the tractor.
- 2- Label the parts, choosing parts from the word bank.

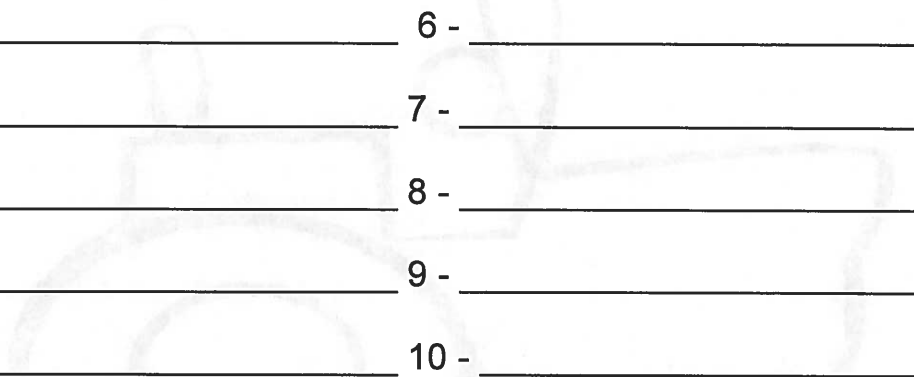
Word Bank:

Hood
Oil Pan
Seat
Front Tire

Radiator Cap
Air Intake
Rear Tire

Steering Wheel
Exhaust Pipe
Draw Bar



- 
- 1 - _____ 6 - _____
2 - _____ 7 - _____
3 - _____ 8 - _____
4 - _____ 9 - _____
5 - _____ 10 - _____

What did you learn?

- 1 - Did you hard time naming the parts? _____
2 - What part was easiest to identify? _____
3 - Were any of the parts like the parts on your bicycle? _____
4 - Name one part that you would find on a garden tractor that you don't find in this example? _____

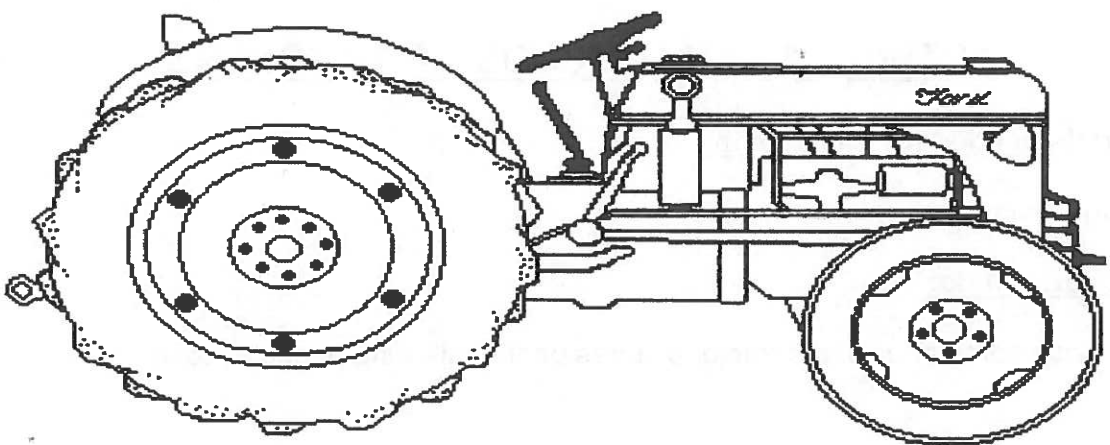
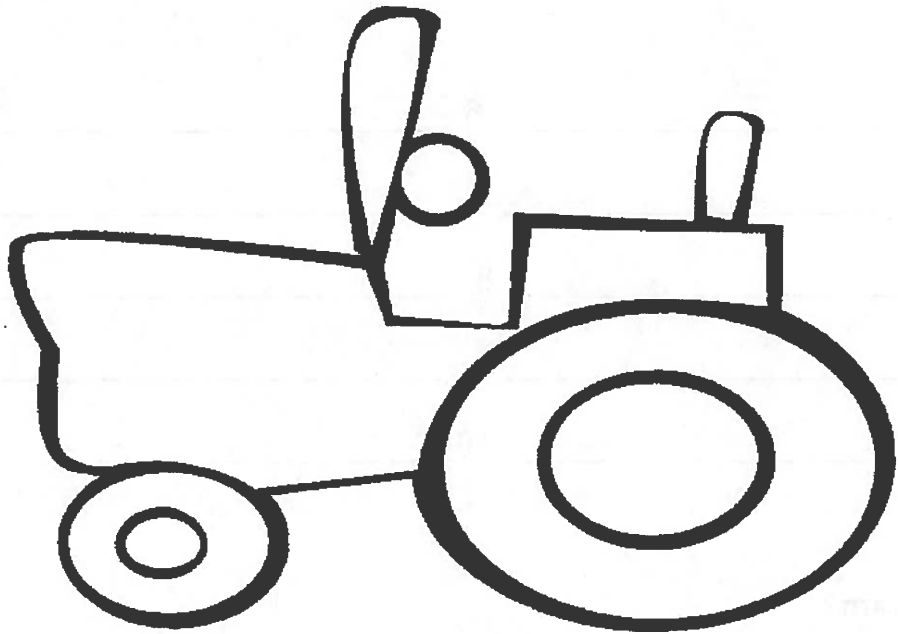
ACTIVITY 2 – MANY KINDS OF TRACTORS

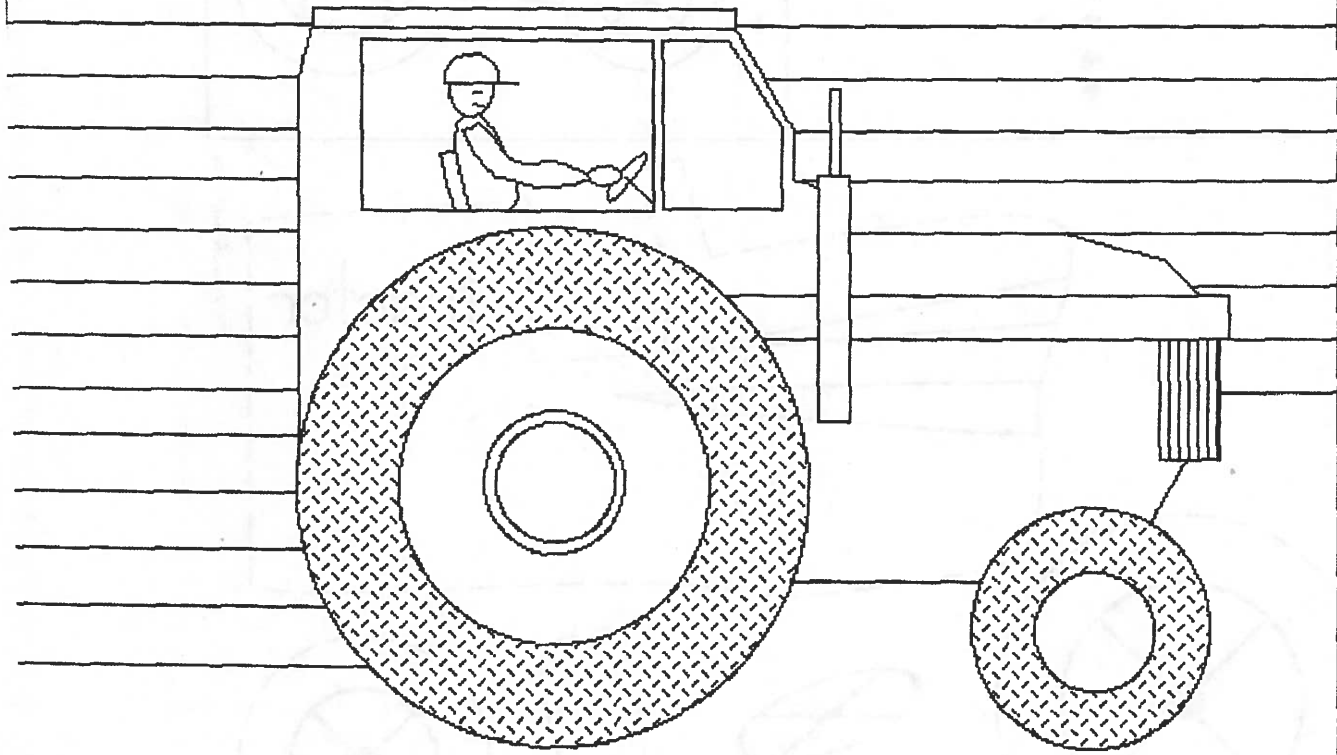
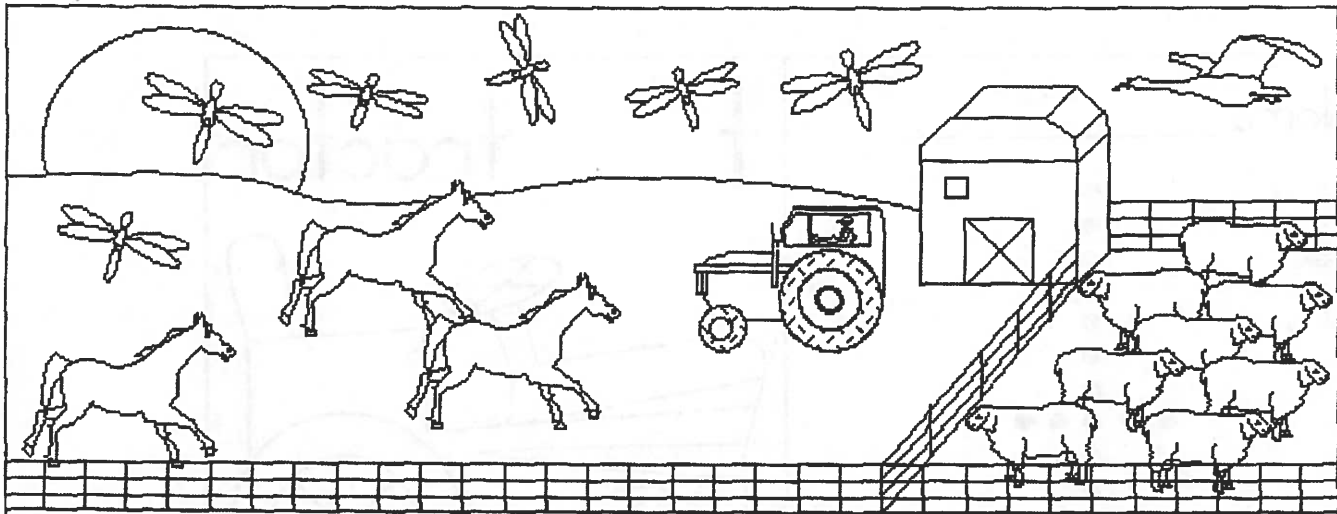
Materials needed for this activity:

Crayons, colored pencils or markers

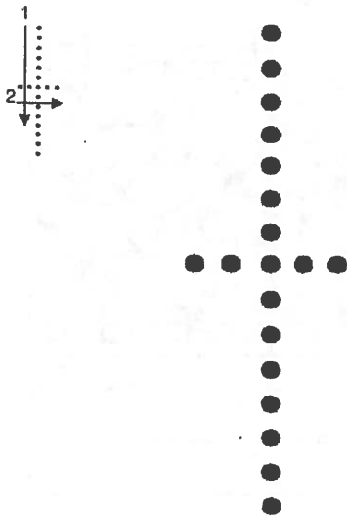
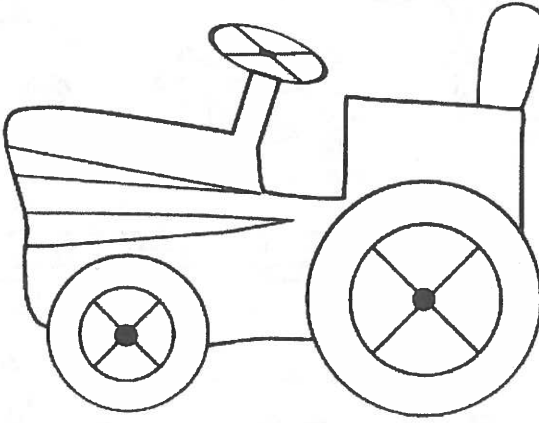
What you will do:

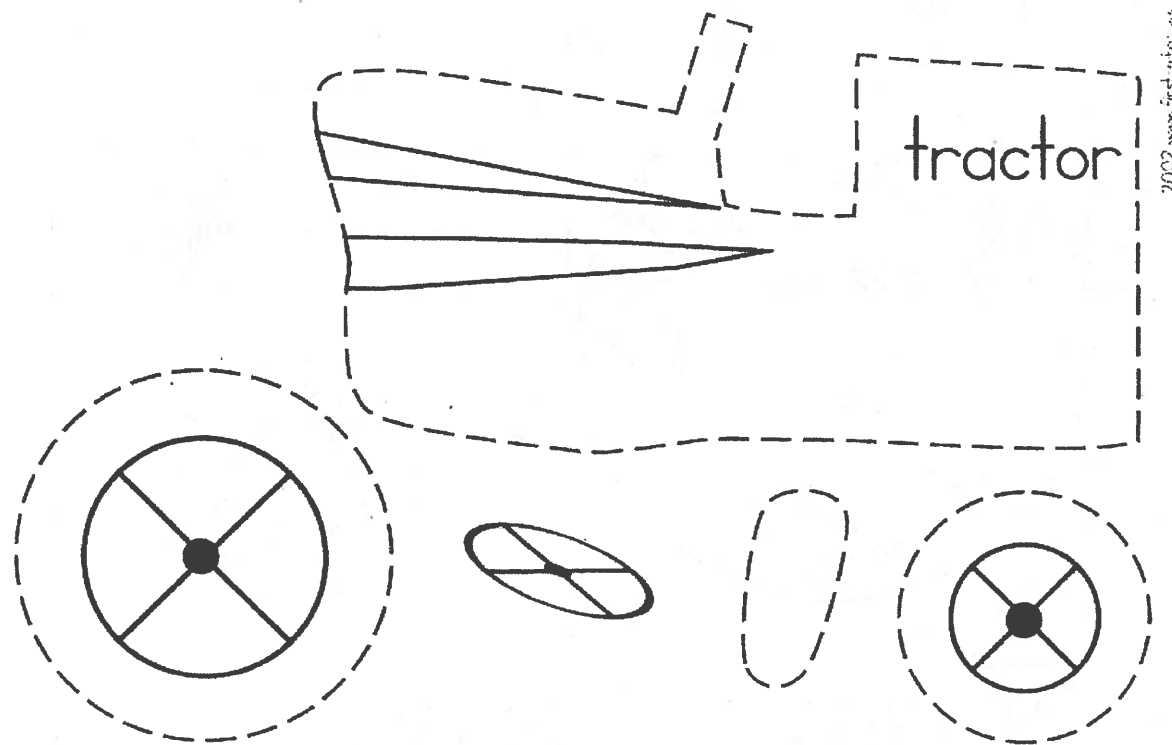
- 1 - Choose some or all of the tractor pictures on the following pages to color.





Tractor

<p>Name _____</p> 	<p>t tractor</p> 
---	---



2002 www.first-school.co.uk

Cut out alphabet flash card above, trace dotted letter, color image and fold on middle line and glue. Art activity: Trace on dotted line. Color, cut out on traced solid lines and glue pieces. Optional: attach wheels with fasteners - age 3+ only.

What did you learn?

- 1 - What color did you choose for your tractors? _____
- 2 - Is this the color of a tractor that you saw? _____
- 3 - Where did you see the tractor(s)? _____

ACTIVITY 3 - SCRAMBLED WORDS

Materials needed for this activity:

Pencil

What you will do:

1 - Unscramble these tractor words.

Hint – these are parts of a tractor. Word bank is on the next page.

- | | |
|---------------------|--------------------------------|
| 1 - riet _____ | 11 - ractotr _____ |
| 2 - marf _____ | 12 - teas _____ |
| 3 - sayfet _____ | 13 - remraf _____ |
| 4 - nigitoin _____ | 14 - tleboteas _____ |
| 5 - rinjyu _____ | 15 - eered ohm _____ |
| 6 - deah gilt _____ | 16 - rlaultugria _____ |
| 7 - dorf _____ | 17 - TOP _____ |
| 8 - rdzaah _____ | 18 - allramf _____ |
| 9 - tchih _____ | 19 - PSOR _____ |
| 10 - seeldi _____ | 20 - akerb depal _____ |
| | 21 - lows voming hievlce _____ |

Word Bank:

slow moving vehicle
Farmall
head light
brake pedal
hazard

injury
ignition
tire
tractor
agricultural

farm
Ford
seatbelt
safety

diesel
farmer
hitch
ROPS

seat
John Deere
PTO
farmer

What did you learn?

1 - Did you need to peak at the answers? _____

2 - How many did you get without looking at the answers? _____

3 - Which was the hardest? _____

ACTIVITY 4 - SAFETY SIGNALS

Materials needed for this activity:

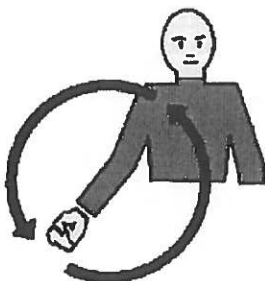
None

What you will do:

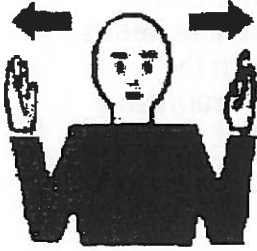
1 - Look at the hand signals in this book.

2 - Practice using the hand signals.

Farm tractors and equipment can be very noisy. It can be very difficult to hear what someone is trying to tell you, even if they are yelling from just a few feet away. A safer way to speak with someone is by using hand signals. Even when you cannot hear, you can pass on information by using these hand signals. These are the "universal hand signals are used for many different things.

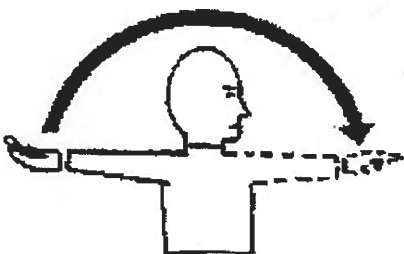
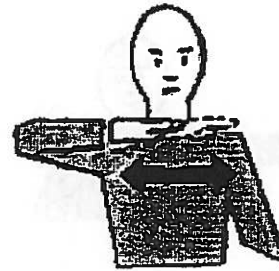


Start the engine: Move arm in a circle with your elbow bent in front of you.

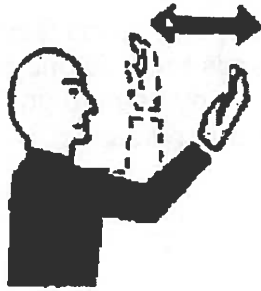


This far to go: Start with hands apart and palms facing each other in front of you. Slowly move hands towards one another to show the driver how much farther they need to go. Hands should be together when the driver is in place.

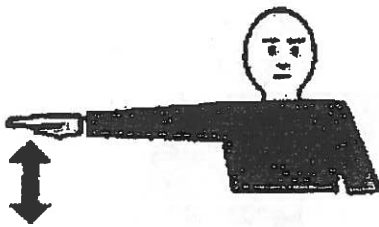
Stop the engine: move hand horizontally across the front of your neck.



Move out: Face in the direction that the vehicle is to be moved. Put your arm straight out behind you. Then swing your arm forward over your head until your arm is straight out in front of you with the palm facing the ground.

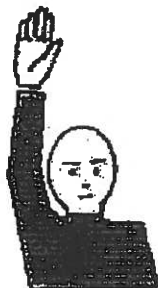
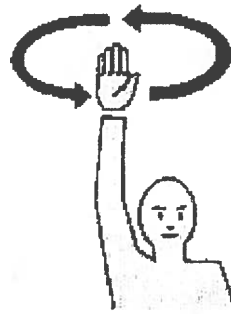


Move toward me - follow me: Look towards the person or vehicle that needs to move. Extend your arm with the palm facing up. Move your forearm and hand towards your face so that your palm is towards your face.



Decrease speed: Extend your arm with the palm facing down. Move your arm down several times. Never raise your arm above the level of your shoulder.

Come to me: Extend your arm up over your head with your palm facing forward. Move your hand in large circles.



Stop: Raise your hand straight up over your head. Keep it there until the driver understands.

What did you learn?

1 - With whom did you practice your hand signals? _____

2 - What other places (workers) would use these hand signals? _____

3 - Did you see anyone use these signals? _____

Where? _____

ACTIVITY 5. TRACTOR SAFETY

Materials needed for this activity:

None

What you will do:

- 1 - Look at the tractor safety rules in this book.
- 2 - Talk about safety rules with an adult.



The Plain Facts About Tractor Safety

Farm tractors should be equipped for rollover accidents.

More than half of all farm tractors are not equipped with a rollover protective structure (ROPS). ROPS and seatbelt - equipped tractors would save approximately 350 lives annually on U.S. farms.

Farm tractors should be equipped with bypass starter covers.

Many farm tractors do not have bypass starter covers for preventing jump starting. Tractor operators may attempt to jump start a farm tractor if the battery is dead. If the tractor is in gear, it could lurch forward and run over operators and innocent bystanders. A bypass starter cover would save lives.

Farm tractors should be equipped with master shields.

Many farm tractors do not have their original equipment power take - off master shields. Many master shields are removed by farmers and are not replaced. If the missing shield exposes an operating power take - off, operators are at risk for entanglement around the spinning shaft.

Farm tractors should be equipped with SMV emblems.

Many farm tractors driven on public highways do not have a Slow Moving Vehicle (SMV) emblem. State vehicle codes require the mounting of an SMV emblem on equipment moving at less than 25 miles per hour on highways. SMV emblems warn other drivers of the slow moving vehicle on the roadway.

Farm tractors should be equipped with emergency lighting.

Many farm tractors do not have functioning hazard warning lights. Operating headlights and hazard warning lights provide advance warning for other drivers sharing the highway with farm equipment.

Farm equipment should be hitched properly.

Farm tractors may become unstable when improper hitching is attempted. Tractor drawbars are designed for towing and take into account the tractor's crucial center of gravity. Hitching or towing at points other than the drawbar may result in a rear overturn.

Farm tractors should not transport extra passengers

Most farm tractors are only designed for one person. Extra riders on farm tractors are discouraged due to the hazard associated with falling from the tractor or falling into the path of trailing equipment. Carrying passengers may divert the attention of the driver from the important task of operating the tractor.

For more information, contact us at NECAS, 10250 Sundown Rd., Peosta, Iowa 52068
Tel: (563) 557 - 0354 or (888) 844 - 6322; Fax (563) 557 - 0353.

What did you learn?

1 - Name two things you learned in reading the safety rules (that you did not know before)? _____

2 - What other places would we need to think about safety rules? _____

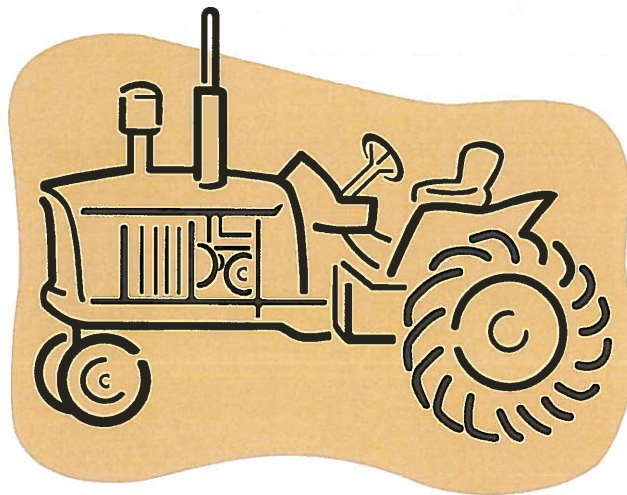
Answers to tractor parts activity page 7

1 - radiator cap 2 - hood 3 - exhaust pipe 4 - air intake 5 - steering wheel 6 - seat
7 - draw bar 8 - rear tire 9 - oil pan 10 - front tire



Answers to scrambled words activity – page 11

1 - tire 2 - farm 3 - safety 4 - ignition 5 - injury 6 - head light 7 - Ford 8 - hazard
9 - hitch 10 - diesel 11 - tractor 12 - seat 13 - farmer 14 - seat belt 15 - John Deere
16 - agricultural 17 - PTO 18 - Farmall 19 - ROPS 20 - brake pedal
21 - slow moving vehicle





What to Exhibit

Tractor

Here is a list of projects that can be shown at the Fair. Pick *one* of the projects you would like to exhibit at the fair. You do not need to turn in the activities you completed in the manual. You do not need to make the projects in special order. If you have any questions about your projects, contact your leader or the Extension Office. There are people there who can help you.

Make a Tractor poster. Your poster should be 22"L x 14"H.

Choose one or more of these ideas for your poster:

- A picture you have drawn of your favorite tractor.
- A story about your favorite tractor.
- A collection of photographs or cut out pictures of tractors or you with a tractor.
- Include any interesting facts or anything you learned about tractors while completing your project

OR

Create your own tractor. You can use any materials you like! Use your imagination and be creative!

For more information on how to label your project, when to enter it in the Fair, and where your project needs to go, please contact the Extension Office.



