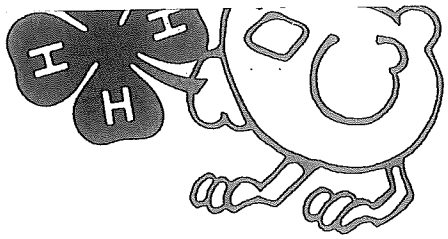
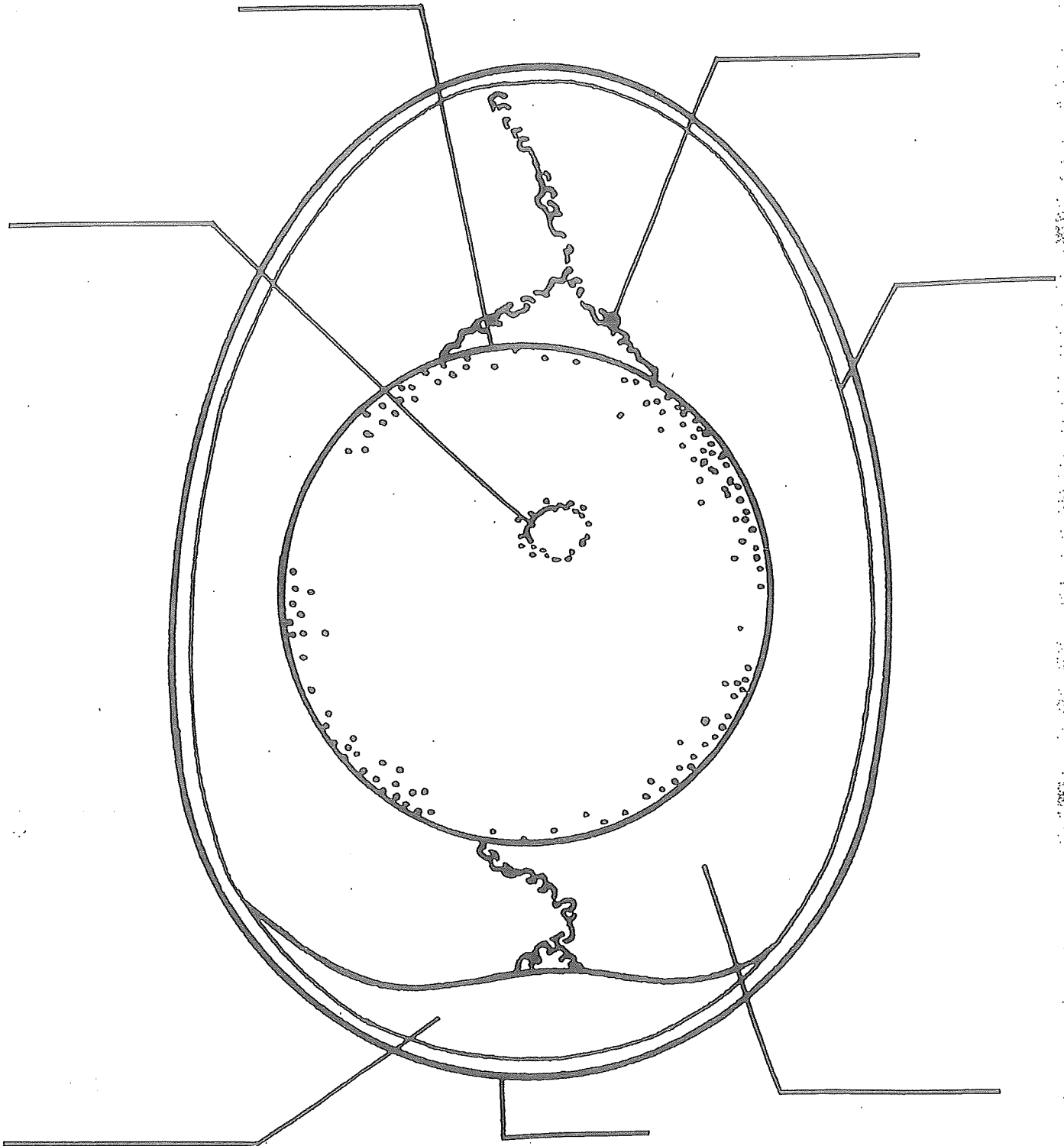


Grade 6



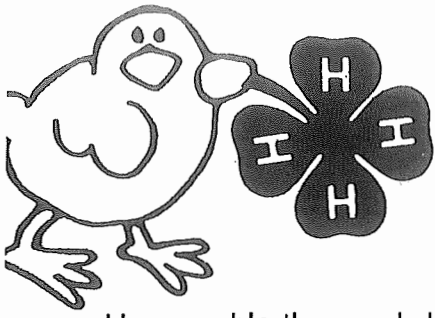
# The Parts of An Egg

Name \_\_\_\_\_



Adapted from: Copycat





# Scrambled Eggs

Name \_\_\_\_\_

Unscramble the words below and you will have the seven parts of an egg.

1. LHLES \_\_\_\_\_
2. KOLY \_\_\_\_\_
3. LELC RIA \_\_\_\_\_
4. BULANME \_\_\_\_\_
5. BAMRMEEN LLSHEL \_\_\_\_\_
6. ZLAAAECH \_\_\_\_\_
7. TOPS RMEG \_\_\_\_\_

More Egg-citement. Circle the correct answer.

8. Eggs are hatched in an \_\_\_\_\_.
  - a. inqubator
  - b. incubator
  - c. incubater
9. Growing chicks require plenty of \_\_\_\_\_ for a healthy start.
  - a. oxyjen
  - b. oxigen
  - c. oxygen
10. Eggs hatch at either 100.5° \_\_\_\_\_ or 38° \_\_\_\_\_.
  - a. Fairenheight and Selcious
  - b. Fahrenheit and Celsius
  - c. Fahrenheight and Cellcious
11. Temperature is measured using a \_\_\_\_\_.
  - a. thermometer
  - b. thermmeter
  - c. thermomater
12. A science that deals with the growth and development of a chick is called \_\_\_\_\_.
  - a. embriology
  - b. embryolgy
  - c. embryology

**Air Cell**

**USDA**

**Albumen**

**Germ Spot**

**Chalazae**

**Shell Membrane**

**Shell**

**Yolk**

The pocket of air in the wide part of the egg.

The watery semi-solid white of an egg. It provides the developing embryo with food and water.

The "white spot" on a yolk. If the egg is fertilized and kept warm then the embryo will begin to develop from this spot.

The hard protective covering of the egg. This has many tiny pores that allow air and moisture to pass in and out of the egg.

The two twisted strands (cords) of albumen at each end of the yolk. These anchor the yolk in the center of the shell.

The thin layers inside the shell. When the egg is cracked, these will usually stick to the shell.

The abbreviation for United States Department of Agriculture.

The yellow of an egg. This is the primary source of food for a growing embryo.

Horses, cats, and dogs are not required to complete numbers 2 and 3.

### Animals Owned

Animals Name	Breed	Sex	Date of Birth	Date Obtained

**1. Expenses for the Animal(s)**

Animal(s) *if purchased*                      \$ \_\_\_\_\_  
 Feed    \$ \_\_\_\_\_  
 Bedding    \$ \_\_\_\_\_  
 Vet    \$ \_\_\_\_\_

Total Expenses              \$ \_\_\_\_\_

**2. Income from Animal(s) *market animals sold***              \$ \_\_\_\_\_

Estimated value of animal to be sold in 4-H Auction \$ \_\_\_\_\_

Total Income                      \$ \_\_\_\_\_

**3. Value of breeding animals**

Asset Value                      \$ \_\_\_\_\_

Value of your cat or dog

\$ \_\_\_\_\_

Net Profit / Loss              \$ \_\_\_\_\_

Member Signature: \_\_\_\_\_

Parent Signature: \_\_\_\_\_

Leader Signature: \_\_\_\_\_