

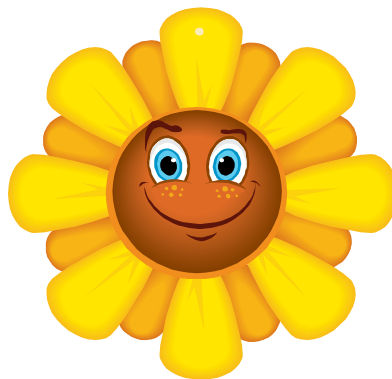
# MINI 4-H COLLECTIONS



Purdue University, Indiana Counties, and U.S. Department of Agriculture Cooperating  
An Affirmative Action/Equal Opportunity Institution

**MINI 4-H COLLECTORS PROJECT  
REQUIREMENTS**

1. Start or add to a collection. These articles may be rocks, coins, stamps, insects, stuffed animals, toy tractors, key chains, sports cards, or any other interesting collection.
  
2. Mount your collection carefully and neatly. Be sure to label all of your articles to the best of your ability.
  
3. Exhibit articles at the county fair along with this completed record sheet. (If your collection is of great value, you may choose to take photos of your collection and exhibit the photos.)
  
4. Be sure to put your name on your fair display.



**HAVE FUN IN MINI 4-H COLLECTIONS!**

If you have any problem with your Mini 4-H project, please give us a call or stop in at the Tipton County Extension Education Center located at the fairgrounds.

Our telephone number is 675-2694 or 675-1177.

### MINI 4-H COLLECTORS

### LET'S MAKE A COLLECTION

Lots of people have developed interesting hobbies of collecting all kinds of items. You can start a collection by being in this Mini 4-H Collection project.

It's simple! Just collect and identify at least a few articles of anything you wish. Some possibilities are rocks, postage stamps, dolls, coins, salt shakers, arrow heads, insects, bottles, sports cards, buttons, stuffed animals, toy tractors, key chains, and many other interesting things.

You may get help to identify your items from your parents, books from home, friends, Library books, Hobby Stores, or the internet (with adult supervision). Be sure to fill out your record sheet telling what you collected, where, when, and how.

If you enjoyed making your collection, you may wish to exhibit items on poster board, display them in a box, or in any appropriate manner to protect the articles and make them attractive to the viewer. Be sure to label each item. Turn your record sheet in with your exhibit.

If you have too many items to exhibit, select several of your favorite ones and exhibit them. More items do not make a better exhibit.

You will receive a newsletter telling you when to bring your exhibit to the fair.