

PURDUE EXTENSION STEUBEN COUNTY

4-H Rabbit WORKSHEETS

Grade 12-A



Name: _____

4-H Club: _____

Digestive System

True or False

- _____ 1. Rabbits are monogastric herbivores. Their stomachs are non-compartmentalized, similar to humans and pigs.
- _____ 2. They also have an enlarged pancreas and appendix.
- _____ 3. The bacteria in the hindgut plays a significant role in the digestive process.
- _____ 4. Bacteria in the gut of the rabbit can synthesize essential amino acids.
- _____ 5. Fiber is an efficient energy source for rabbits.
- _____ 6. Dietary fiber will also reduce or prevent fur chewing.

List the 10 essential amino acids:

- | | |
|----------|-----------|
| 1. _____ | 6. _____ |
| 2. _____ | 7. _____ |
| 3. _____ | 8. _____ |
| 4. _____ | 9. _____ |
| 5. _____ | 10. _____ |

Coprophagy

Fill in the blanks.

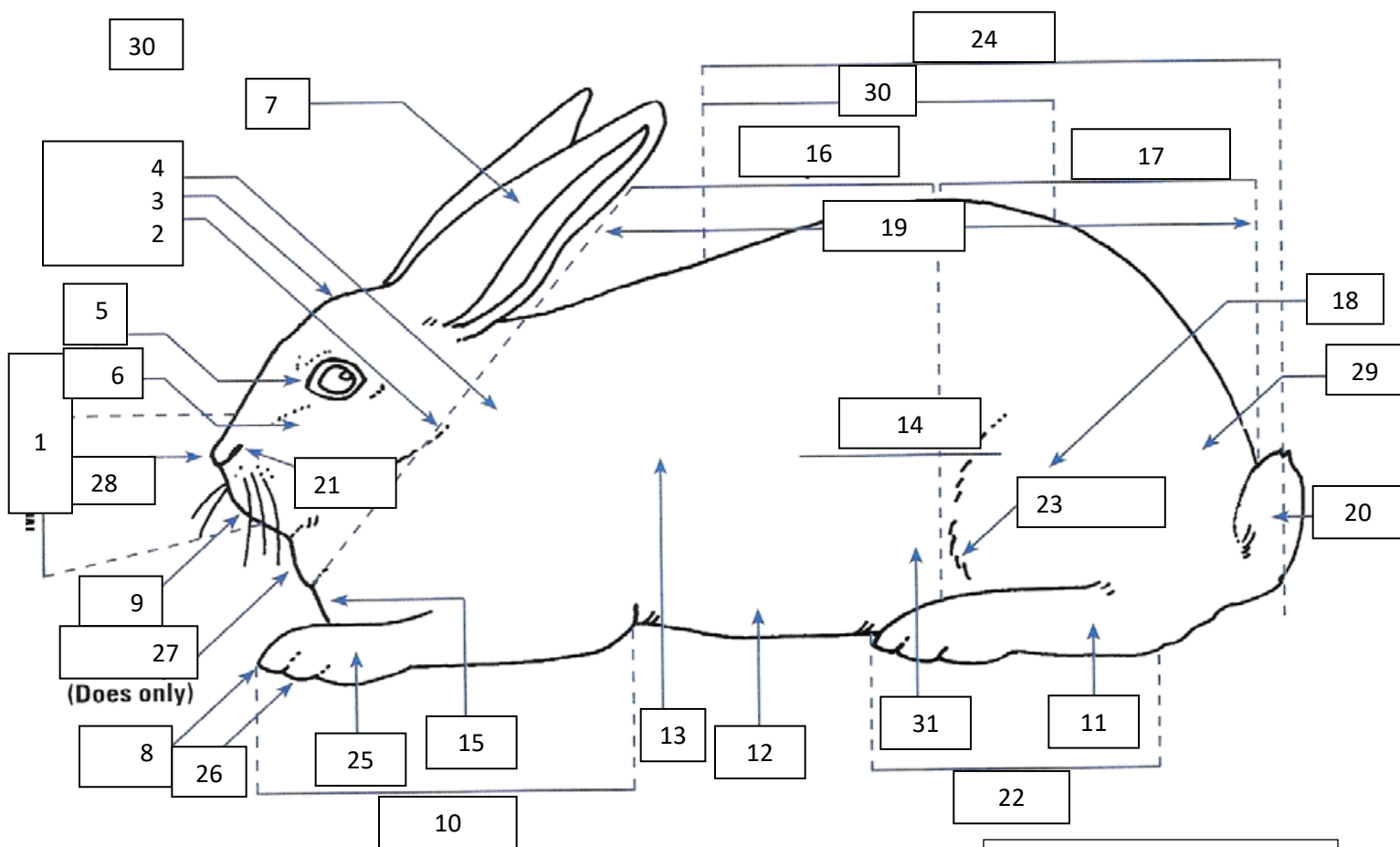
An instinctive behavior of rabbits called _____ is the act of eating their _____ pellets. Two other names for this are: _____ or _____. Actually, the rabbit is not eating feces, but is eating _____ pellets called _____. Cecotropes are also called _____ feces. Cecotropes are soft, _____ pellets secreted in _____ clusters, covered by a gelatinous membrane, and produced by the rabbit's _____. Coprophagy is necessary for the rabbit to complete the _____ process, allowing efficient utilization of the hard to digest _____ in _____. It is also an important way of providing the B complex _____ requirements.

Answers can be found in the OSU Rabbit Resource Handbook – 4-H 228R.

Parts of the Rabbit

Using the chart in your book identify the parts of the rabbit.

- | | | |
|-----------|-----------|-----------|
| 1. _____ | 12. _____ | 23. _____ |
| 2. _____ | 13. _____ | 24. _____ |
| 3. _____ | 14. _____ | 25. _____ |
| 4. _____ | 15. _____ | 26. _____ |
| 5. _____ | 16. _____ | 27. _____ |
| 6. _____ | 17. _____ | 28. _____ |
| 7. _____ | 18. _____ | 29. _____ |
| 8. _____ | 19. _____ | 30. _____ |
| 9. _____ | 20. _____ | 31. _____ |
| 10. _____ | 21. _____ | |
| 11. _____ | 22. _____ | |



Completed (40 possible)	_____
Accuracy of answers (30 possible)	_____
Appropriate grammar (15 possible)	_____
Neatness of record (15 possible)	_____
Total	_____
A = 86-100 points	
B = 71-85 points	
C = 70 points or less	