

# PURDUE EXTENSION STEUBEN COUNTY

## 4-H Rabbit WORKSHEETS

Grade 11-A



Name: \_\_\_\_\_

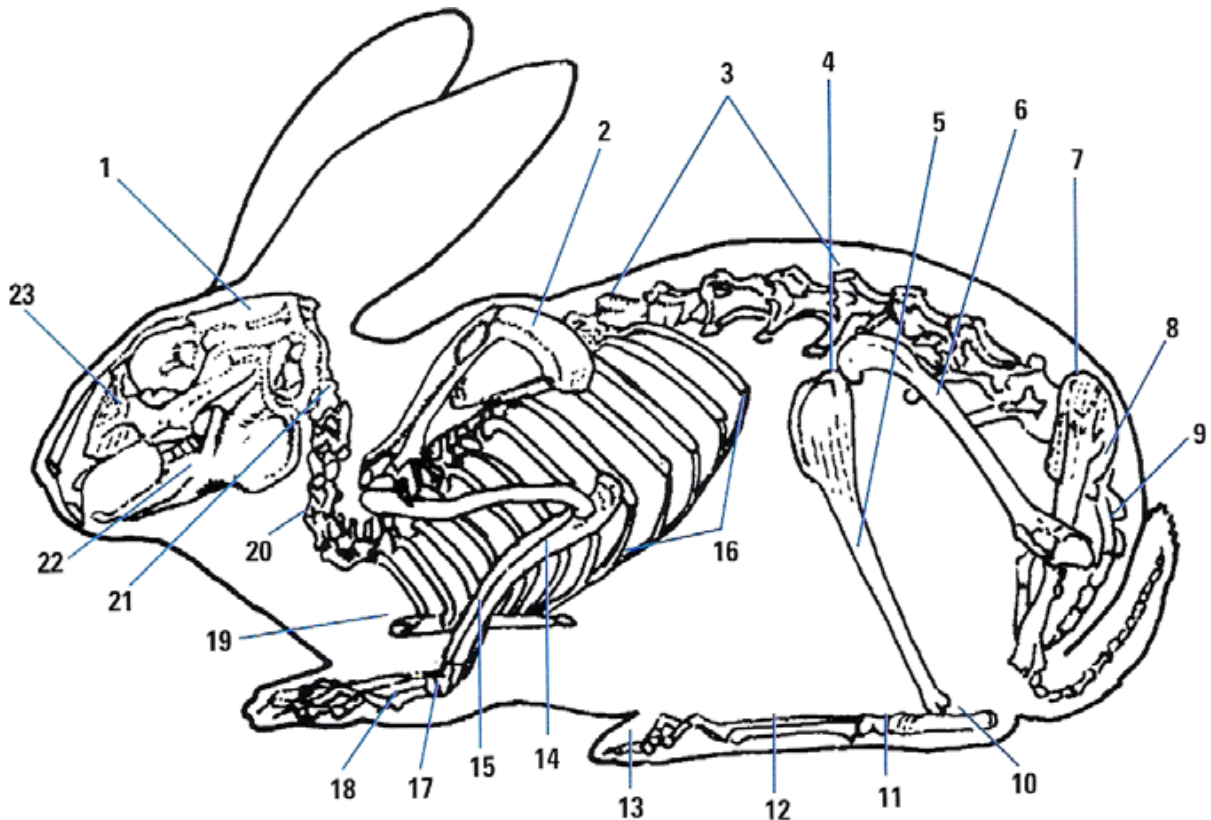
4-H Club: \_\_\_\_\_

Write the correct skeletal part for each number.

1. \_\_\_\_\_
2. \_\_\_\_\_
3. \_\_\_\_\_
4. \_\_\_\_\_
5. \_\_\_\_\_
6. \_\_\_\_\_
7. \_\_\_\_\_
8. \_\_\_\_\_

9. \_\_\_\_\_
10. \_\_\_\_\_
11. \_\_\_\_\_
12. \_\_\_\_\_
13. \_\_\_\_\_
14. \_\_\_\_\_
15. \_\_\_\_\_
16. \_\_\_\_\_

17. \_\_\_\_\_
18. \_\_\_\_\_
19. \_\_\_\_\_
20. \_\_\_\_\_
21. \_\_\_\_\_
22. \_\_\_\_\_
23. \_\_\_\_\_



Answers can be found in the OSU Rabbit Resource Handbook – 4-H 228R.

Purdue University is an equal access/equal opportunity institution.  
This material may be available in alternative formats.

## Rabbit Health

Place the letter of the correct description or symptom for each illness.

- |                               |  |
|-------------------------------|--|
| ___ Abscesses                 | A The predisposition may be inherited.                             |
| ___ Coccidiosis               | B <i>Microsporium</i> and <i>Trichophyton</i>                      |
| ___ Ear Canker                | C Head severely twisted to one side.                               |
| ___ Enterotoxemia             | D <i>Staphylococcus aureus</i> or <i>Pasteurella multocida</i>     |
| ___ Malocclusion              | E Common reproductive disease.                                     |
| ___ Mange                     | F Internal parasites found in the cecum.                           |
| ___ Mastitis                  | G Myxoma virus   |
| ___ Myxomatosis               | H Swollen mammary glands, elevated temperature.                    |
| ___ Pinworms                  | I <i>Cheyletiella parasitivorax</i> and <i>Listrophorus gibbus</i> |
| ___ Pneumonia                 | J Invades the respiratory or digestive track. Deadly.              |
| ___ Rabbit Syphilis           | K Intestinal disorder caused by protozoan parasites.               |
| ___ Ringworm                  | L Matting of the fur on the inside of the front paws.              |
| ___ Snuffles                  | M <i>Pasteurella multocida</i>                                     |
| ___ Sore Hocks                | N A disorder where the teeth continue to grow.                     |
| ___ Viral Hemorrhagic Disease | O <i>Pasteurella multocida</i>                                     |
| ___ Weepy Eye                 | P Often deadly in four- to eight-week-old fryers.                  |
| ___ Wry Neck                  | Q <i>Psoroptes cuniculi</i>  |

### Fill in the blank.

Rabbit urine commonly has a \_\_\_\_\_ pigment, and unless blood is seen, is not cause for alarm. Rabbit \_\_\_\_\_ frequently contains large amounts of calcium \_\_\_\_\_ or \_\_\_\_\_ carbonate. This coloration is especially noticeable when the urine is \_\_\_\_\_, usually due to the type of feed eaten.

Molting is the process of growing new \_\_\_\_\_. Various molts are associated with the rabbit's age, and are affected by \_\_\_\_\_, \_\_\_\_\_, and \_\_\_\_\_. The first molt occurs at about \_\_\_\_\_ months of age and lasts until the rabbit is four to six \_\_\_\_\_ old. \_\_\_\_\_ is extremely important in the diet at this time as the incidence of \_\_\_\_\_ become greater.

The rabbit's nails should be trimmed with a pair of \_\_\_\_\_ clippers designed for use on \_\_\_\_\_. Before you trim the toenails, first find the \_\_\_\_\_. Do not panic if you accidentally cut into the quick. Put some \_\_\_\_\_ powder on the end of a \_\_\_\_\_ cotton swab and press it firmly against the \_\_\_\_\_. You can also use \_\_\_\_\_ or powdered \_\_\_\_\_.

Completed (40 possible)	_____
Accuracy of answers (30 possible)	_____
Appropriate grammar (15 possible)	_____
Neatness of record (15 possible)	_____
Total	_____
A = 86-100 points	
B = 71-85 points	
C = 70 points or less	

Answers can be found in the OSU Rabbit Resource Handbook – 4-H 228R.