

PURDUE EXTENSION STEUBEN COUNTY

4-H POULTRY WORKSHEET

Grade 6



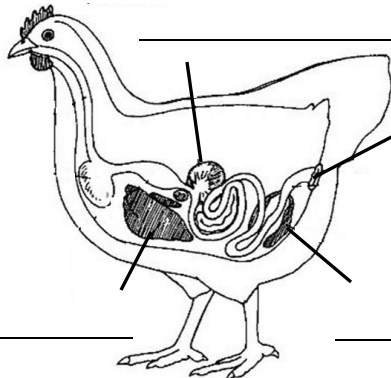
Name: _____

4-H Club: _____

Use Chapter 3: Poultry Biology to answer the following questions.

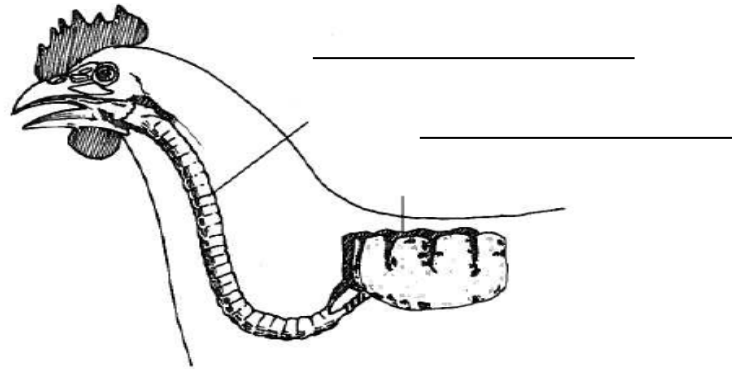
1. Some cells such as blood cells, feather follicle cells, and skin cells always grows by cell multiplication, called _____.
2. _____ cells and _____ cells (after hatching) grow by cell enlargement, called hypertrophy.
3. True or False: The testes of poultry are located internally, which is opposite of most mammals.
4. If you spend time with newly hatched goslings or talk to them while they are still in the egg, they will be attached to you the rest of their lives. This is called _____.
5. Feathering varies by breed but follows a general pattern in which feathers will develop on the following body parts at the given times.
 - i. 2-3 weeks old- _____
 - ii. 3-4 weeks old- _____
 - iii. 4-5 weeks old- _____
 - iv. 5-6 weeks old- _____
 - v. 6-7 weeks old- _____

6. Label the Digestive system.



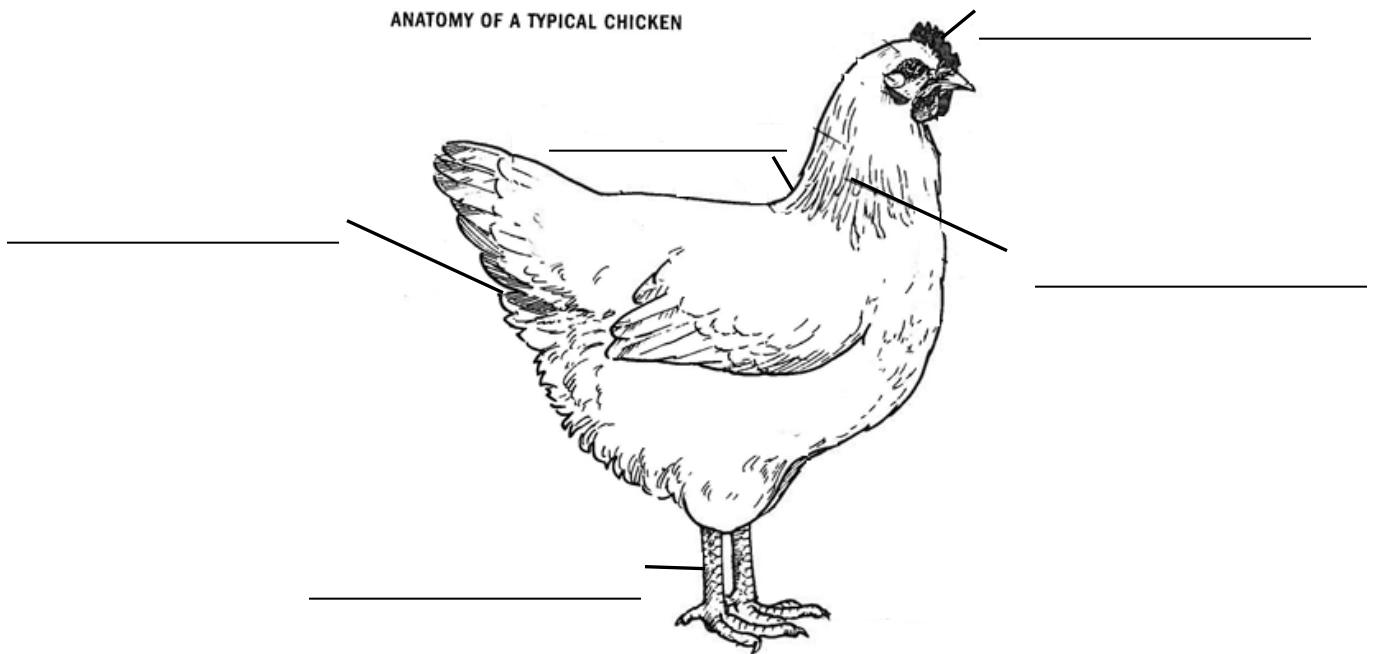
Answers can be found in Storey's Guide to Raising Poultry

7. Label the two parts of the diagram that deal with the respiratory system.



8. Label the diagram.

ANATOMY OF A TYPICAL CHICKEN



Completed (40 possible)	_____
Accuracy of answers (30 possible)	_____
Appropriate grammar (15 possible)	_____
Neatness of record (15 possible)	_____
Total	_____
A = 86-100 points	
B = 71-85 points	
C = 70 points or less	