



Steuben County 4-H Horse & Pony Worksheet: Grade 8

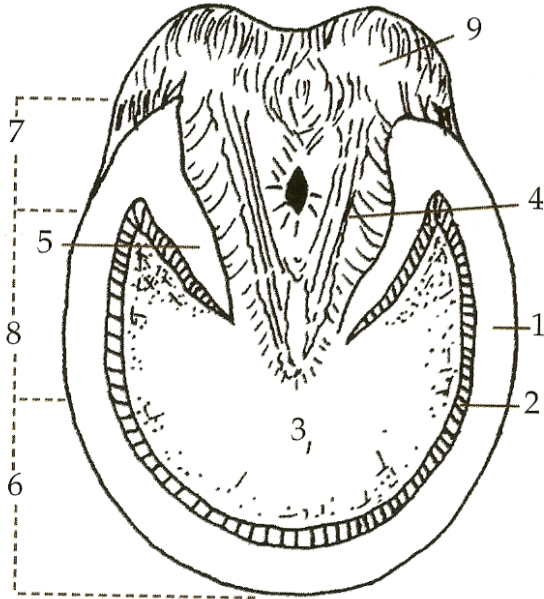


Name: _____ 4-H Club: _____

Answers can be found in “Beginning Horse Management” Resource Book 4-H 174.

Use the section titled “Hoof Care and Dental Health” to answer the following questions:

1. Match the number on the hoof diagram with the appropriate name of that part.



- _____ Bulb
- _____ Frog
- _____ Heel
- _____ Bar
- _____ Sole
- _____ Quarter
- _____ Toe
- _____ White Lane
- _____ Wall

2. List the four basic points in caring for a horse's feet.

- a. _____
- b. _____
- c. _____
- d. _____

3. Describe the process for picking up a horse's rear hoof.

4. _____ is the most common hoof disease.

5. Horseshoes protect the hoof against _____.

6. How fast do healthy feet grow?

7. How do you care for dry brittle hooves?

8. List four reasons you would put shoes on a horse.

- a. _____
- b. _____
- c. _____
- d. _____

9. What signs indicate your horse's shoes need to be reset?

Answer the following general questions:

10. Without naming any names, discuss a practice that you have seen or heard about that you think was an unethical practice in relationship to showing an animal.

11. In thinking about your answer to the previous question, why do you feel that this practice was wrong?

Completed (40 possible)	_____
Accuracy of answers (30 possible)	_____
Appropriate grammar (15 possible)	_____
Neatness of record (15 possible)	_____
Total	_____
A = 86-100 points	
B = 71-85 points	
C = 70 points or less	