



# Steuben County 4-H Dairy Worksheet



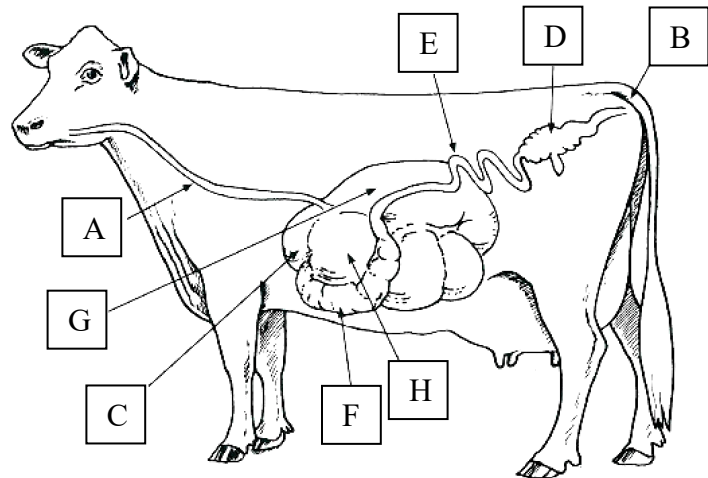
## Grade 5

Name: \_\_\_\_\_ 4-H Club \_\_\_\_\_

Answers to these questions can be found in the "Dairy Resource Handbook" 4-H 127R

1. In Chapter 5 find the parts of the cows digestive system and match the letter to the part.

- \_\_\_\_\_ Esophagus
- \_\_\_\_\_ Omasum
- \_\_\_\_\_ Anus
- \_\_\_\_\_ Rumen
- \_\_\_\_\_ Small Intestine
- \_\_\_\_\_ Reticulum
- \_\_\_\_\_ Abomasum
- \_\_\_\_\_ Large Intestine



2. In Chapter 3, look at the safety precautions. A \_\_\_\_\_ disease can be contracted by a producer by being \_\_\_\_\_ the animal, handling an \_\_\_\_\_ animal, or disposing of \_\_\_\_\_ tissues.

List two things that can help reduce the chances of catching the disease:

\_\_\_\_\_  
\_\_\_\_\_

3. Chapter 5 discusses Forage Quality. \_\_\_\_\_ are a large part of a dairy cow's diet and the \_\_\_\_\_ source of \_\_\_\_\_. High-quality forages can supply a large portion of the \_\_\_\_\_, \_\_\_\_\_, and some \_\_\_\_\_ in a ration.

At the beginning of the chapter, we learn that dairy cows are a \_\_\_\_\_ animal that has the ability to digest feedstuffs. The 4 compartments of their stomachs are what?

\_\_\_\_\_  
\_\_\_\_\_

4. In Chapter 6, we learn about Housing for dairy calves. They need to be kept in a \_\_\_\_\_, \_\_\_\_\_ place where they have fresh \_\_\_\_\_.  
It recommends housing calves separately. Why should they be housed separately?

---

To test the environment where you keep your calf to see if it is clean and dry enough, you should kneel for \_\_\_\_\_ minutes to see if your knees are wet or muddy. That will tell you if you have enough bedding to keep your calf clean and dry.

Describe the place that you keep your animal. Also tell how often you have to change and clean bedding so that it is a good, safe place for your cow. \_\_\_\_\_

---

---

---

5. The vocabulary can be found in the glossary section in the Dairy Handbook.

- |                   |  |
|-------------------|--|
| _____ Blind spot  | a. any animal that has 4 stomach compartments                  |
| _____ Flight zone | b. area directly behind cattle                                 |
| _____ Ruminant    | c. father of a calf  |
| _____ Waste milk  | d. animals safety zone   |
| _____ Sire        | e. Milk that cannot go into the bulk tank, used to feed calves |

6. In Chapter 15, it lists items that you should take with you to the fair to help get ready for the show. It is good to be prepared ahead of time. Write down a list of the things that you will take with you and how many/how much you will need.

---

---

---

---

Completed (40 possible)	_____
Accuracy of answers (30 possible)	_____
Appropriate grammar (15 possible)	_____
Neatness of record (15 possible)	_____
Total	_____
A = 86-100 points	
B = 71-85 points	
C = 70 points or less	