

Shelby County Mini 4-H Handbook 2026

Open to youth in Kindergarten through 2nd Grade
Fun & educational activities to learn about 4-H!



Extension - Shelby County
Purdue Cooperative Extension Service – Shelby County
20 West Polk Street, Suite 201
Shelbyville, IN 46176
317-392-6460
www.extension.purdue.edu/shelby

Table of Contents

<u>Page Content</u>	<u>Page #</u>
All About 4-H	3
All About Mini 4-H	4
Dates to Remember	5-6
New in 2025-26: Fair Entry for Mini 4-H	7
General Projects	8-14
Livestock Projects	15
Mini 4-H Camp Registration Form	17
Mini 4-H Camp Health Forms	19-20
Mini 4-H Liability Release Form	21
Mini 4-H Fashion Revue Script	23

Shelby County 4-H Staff

Erin Padgett – 4-H Youth Development Educator, emenchho@purdue.edu

Cindy Kuhn – 4-H Program Assistant, cmkuhn@purdue.edu

Natalie Werner – 4-H Secretary, russe238@purdue.edu

Shelby County Mini 4-H Club Leaders

Tiffany Hamblin
Abigail Bridges



All About 4-H

Don't forget to enroll in 4-H! All youth K-12 must enroll in 4-H each year at: v2.4honline.com
October 1st-May 15th



I Pledge

my **HEAD**
to clearer thinking,

my **HEART**
to greater loyalty,

my **HANDS**
to larger service, and

my **HEALTH**
to better living, for

my **Club**, my **Community**,
my **Country**,
and my **World**.

As one of the largest and oldest youth organizations, 4-H is a wonderful organization to be a part of! You get to learn, meet friends, attend camps and workshops, have fun, and much more!



For more information, read your 4-H Newsletter, weekly 4-H Online News & Notes emails, check the website at www.extension.purdue.edu/shelby, or follow us on Facebook!



Members learn and recite the 4-H Pledge together to start meetings!



Questions?
Call us at the office.
We are happy to help
you!
(317) 392-6460

All About Mini 4-H

A non-competitive experience designed to encourage positive development of children in grades K-2.

The goal of Mini 4-H is to help young children explore friendships outside the family; explore the way in which things work; practice both small and large muscle control; and think about the ways people work together on projects.

The NON-COMPETITIVE learning environment for Mini 4-H includes:

1. Planned learning activities in which children are invited to be active and explore materials and ideas without the pressure of completing a specific product or exhibit.
2. Low adult/leader to child ratio that allows time for adults/leaders to provide individual, positive encouragement and assistance.
3. Simple, interesting activities that are fun.
4. Encouragement of children to participate in a group activity by sharing and/or displaying their activity projects.
5. Rewards that are identical and/or ribbons of the same color for everyone.

There is no limit to the number of projects youth can sign up for, however, we suggest starting out with one or two your first year.





Dates to Remember



Welcome to Mini 4-H!

Mini 4-H is a great way to make new friends, learn about 4-H, and have fun! There are so many activities for you to explore and try for the first time. You can share what you learn with your family and friends. Your parents or another adult can help you with your Mini 4-H projects. You will then bring your projects to the Shelby County Fair. Please be sure to check the date and time you will need to bring your projects! You will get a ribbon for completing your project.

Mini 4-H Meetings

February 5

March 5

April 2

All meetings begin at 6:00pm and are held in the Family Arts Building at the Shelby County Fairgrounds.

Wednesday
June 10

Mini 4-H Fashion Revue Judging

11:00am

Lewis Creek Baptist Church

Mini 4-H Communications Judging

1:00pm

Lewis Creek Baptist Church

Public Fashion Revue

7:00pm

Lewis Creek Baptist Church

Mini 4-H Project Judging

9:00am-12:00pm

Free Stage in front of Brinson Building at the Shelby County Fairgrounds

Cake Decorating, Ceramics, Collections, Construction Sets, Crafts, Entomology, Equine, Flowers, Foods, Livestock, Model Kits, My Pet & Me, Photography, Recycling, Scrapbook, Sewing, Space, Trees, Veggie Art, Wildlife, Woodcraft

Saturday
June 13

Tuesday
June 16

Mini 4-H Livestock Show

6:00pm

Livestock Arena

Swine, Goats, Sheep

Animals will be provided.

Frog Jumping Contest to immediately follow

Mini 4-H Rabbit Show

9:00am

Livestock Arena

Rabbits will be provided.

Mini 4-H Cat Show

11:00am

Brinson Building

Cats will be provided.

Thursday
June 18



Dates to Remember

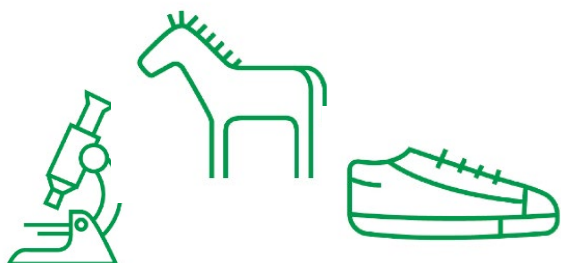


Monday
June 22

Project Pick Up

5:00-7:00pm

4-H Building



Mini 4-H Camp

9:00am-3:00pm

Family Arts Building

Registration due June 26

Saturday
July 11

One Day
Only!

Poultry Workshops

November 3, 2025

Brinson Building, 5:00pm-7:00pm

April 2, 2026

Brinson Building, 5:00pm-7:00pm

May 28, 2026

Brinson Building, 5:00pm-7:00pm

Cat Workshops

April 16, 2026

Brinson Building, 6:30 PM

May 27, 2026

Brinson Building, 6:30 PM

Sheep Workshops

May 14, 2026

Livestock Arena, 6:30 PM

Swine Workshops

February 28, 2026

Cassidy Farms Showbarn, 1:00 PM

*RSVP in 4-HOnline

Rabbit Workshops

March 18, 2026

Brinson Building, 6:30 PM

Additional & Updated Workshop Information can be found
on our calendar at extension.purdue.edu/shelby



NEW IN 2025-2026 FAIR ENTRY FOR MINI 4-H

Project Tags for Exhibits will be mailed to Mini 4-Hers in late May after Fair Entry closes on May 21st.

All Mini 4-H Projects will now be entered in Fair Entry just as the 4-H members enter their projects. A step-by-step guide for this process will be mailed out with the newsletter.

Please be on the lookout for this information in May!

If you have any questions, please feel free to call the Extension Office at (317) 392-6460.

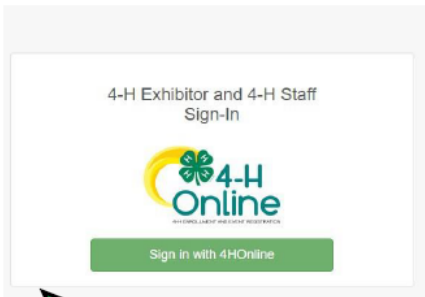

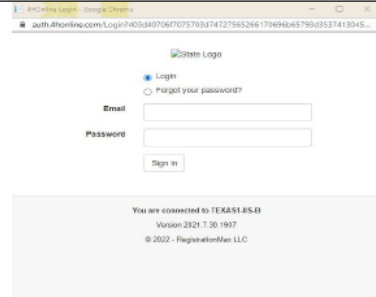
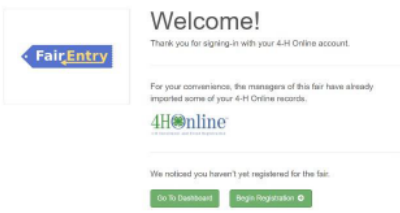


Extension - 4-H Youth Development



How to Register Exhibits for Fair (4-H Family)

Register 4-H projects for the Shelby County Fair:
May 1, 2025- May 21, 2025

<p>1. Go to (https://bit.ly/2025faireentry)</p> <ul style="list-style-type: none"> - Recommended browsers: Google Chrome or Mozilla Firefox. Older versions of Internet Explorer may cause unexpected results. - Register all entries for each exhibitor in the family before proceeding to the Payment section. - Be sure to click "submit" when you have completed your entries. Entries are not final until they have been submitted. 	
<p>2. Select the "Sign in with your 4-H Online" option- the GREEN box</p>	
<p>3. A separate box will pop up where you can enter the login email address and password from 4HOnline.</p> <p><i>(If you don't remember your password, you will need to select the "I forgot my password" option to get a temporary one emailed to you. If your email address has changed, log in using the old email address and change it in 4-H Online.)</i></p>	
<p>4. Click the "Sign in" box.</p>	<p>5. This will take you to the Welcome screen, where you will need to select the green box to "Begin Registration."</p> 

Projects

Choose one or more that you want to take to the fair this year!

CAKE DECORATING

Exhibit three (3) decorated cupcakes OR three (3) decorated cookies on a heavy paper plate.



CERAMICS

Exhibit one (1) painted article of greenware or clay.



COLLECTIONS

Choose One: Collection displayed in a shoe box OR on a poster (14"x22") OR in an album/binder. You should add three (3) items to your collection each year.



CONSTRUCTION SETS

Exhibit something you have made from a construction set such as Legos, K'nex, Lincoln Logs, etc.



CRAFTS

Exhibit one (1) craft item that you have made. Refer to your manual for suggested items or make your own creative craft.



ENTOMOLOGY (1, 2, or 3)

Entomology 1 –

Identify parts of a fly. Color the butterfly or moth and mount it on a 14"x22" poster board.

Entomology 2 –

Identify the parts of the ant and wasp. Collect five (5) different insect pictures and mount them on a 14"x22" poster board. Label each with the correct common name.

Entomology 3 –

- Design and make your own bug using materials around the house.
- Make a poster or book showing the life cycle of a bug.
- Make a poster showing bugs that live in groups on one half and bugs that live alone on the other half.
- Make a project activity as a group and take it to the fair to show the kinds of things your group has been doing.
- Make a scrapbook of pictures showing your group having fun while making the project activities in this manual.
- Make a group mural showing a variety of bugs and where they live.

EQUINE (1, 2, or 3)

Equine 1 –

Identify the parts of a horse and mount it on a 14"x22" poster board.

Equine 2 –

Complete the "Horse Terms" page. Draw or cut out from magazines pictures of three (3) of the items listed on the "Horse Terms" page. Label what they are and their definition. Mount these pages on a 14"x22" poster board.

Equine 3 –

- Draw a picture that illustrates at least one (1) of the "10 Things to Remember" and write the rule(s) you illustrated on the poster. Mount the pages on a 14"x22" poster board.
- Draw a picture of your ideal horse and write a paragraph telling what it's breed, color and markings are. Do not forget to give your horse a name! Mount the picture and story on a 14"x22" poster board.

FASHION REVUE

Choose an outfit from your closet or your parent's closet (with permission) OR create a costume, a dress up outfit or party outfit OR wear a sports outfit and model it at the Fashion Revue before the county fair. Write a description of your outfit and why you chose it. Mini 4-Hers will attend Fashion Revue judging on Wednesday, June 10th at 9:00am at Lewis Creek Baptist Church. They will then participate in the public Fashion Revue at 7:00pm on June 10th.



FLOWERS

Choose one (1):

- One (1) blossom, exhibited in a soft drink bottle or a small vase.
- Notebook of flowers (labeled).
- Small arrangement of three (3) flowers.

*Select a different option for each year.

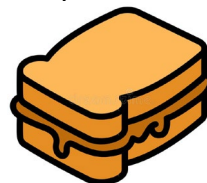


FOODS

Exhibit one (1) of the following:

- Peanut butter sandwich
- Popcorn snack displayed in a small plastic sandwich bag
- No Bake cookies
- Marshmallow treats
- 14"x22" poster on kitchen safety rules or the food plate

*Select a different option for each year.



Note: Food products must be exhibited on a 9" disposable plate unless otherwise stated.

Projects

LIVESTOCK

Exhibit one (1) of the following, mounted on a 14"x22" poster board.

- Division I – Choose one (1) of the topics listed below. Put your chosen exhibit on a poster board.
- Division II – Choose one (1) of the topics listed below, not one you have previously done. Put your chosen exhibit on a poster board.
- Division III – Choose one (1) of the animals in the manual. Draw a picture of the animal and write a short story, no more than 1 page, about it. Include in your story what the animal is and what breed it is. Tell us qualities about the breed plus something interesting about the animal. Add any interesting facts you discovered on your own. Put your exhibit on a poster board.

Division I & II Topics:

- a picture that you have drawn of one of the animals in the manual
- a story that you have written about one of the animals in the manual
- a collection of cut-out pictures of one or more of the animals in the manual
- if your family owns one of the animals listed in the manual, make a poster of pictures of you taking care of your animal



MODEL KITS

One (1) assembled model kit (car, boat, animal, airplane, etc.), painted appropriately.



MY PET AND ME

Make one (1) project notebook or poster board and bring it to the fair for judging. Also, if possible, bring your small pet in a cage for judging.



Projects

PHOTOGRAPHY

Exhibit one (1) of the following, mounted on a 14"x22" poster board.

- a. A poster with six (6) pictures of non-moving subjects (landscapes, buildings, scenery).
- b. A poster with six (6) pictures. Three (3) of the pictures can be of anything you like. The other three (3) pictures should be of the following:
 - One (1) picture of your school.
 - One (1) picture of a special friend, that may be your best friend, a dog or cat, a brother or sister, or your parents/guardians.
 - One (1) picture of your favorite place to play.
- c. A poster with six (6) pictures. Four (4) pictures can be of anything you like. The other two (2) pictures should be of the following:
 - One (1) picture of your scenery.
 - One (1) picture of your favorite animal.



RECYCLING

Exhibit an item you have made from recycled materials as outlined in your manual.



SCRAPBOOKING

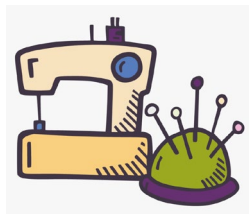
Scrapbook with two (2) consecutive pages designated as the pages that you would like to have judged.



SEWING

Exhibit will be one (1) of the following:

- a. Fringe a scarf
- b. Quilt square initials
- c. Tic-Tac-Toe weaving
- d. Stitch the mouse
- e. Connect-a-pattern
- f. Flight pattern



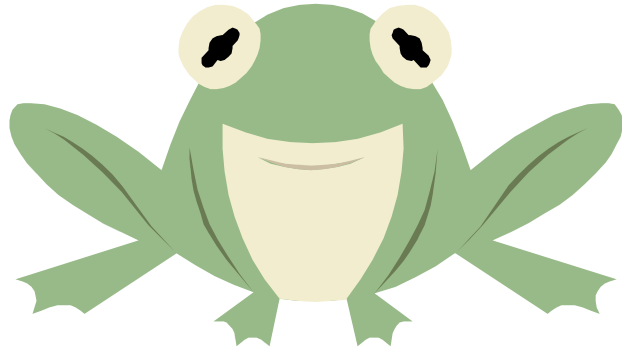
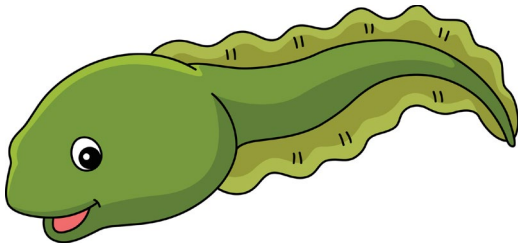
SPACE

Exhibit one (1) of the following:

- a. Design and make your own rocket using materials around your house like paper towel tubes and construction paper.
- b. Make a poster (14"x22") showing some things you have discovered about astronauts.
- c. Make the star constellation of your choice using two different techniques from this manual or make up your own method.

TADPOLES TO FROGS

After raising a frog, bring your frog to the fair for the Frog Jumping Contest. Don't forget to name your frog!



TREES

Exhibit one (1) of the following:

- An activity as outlined in your manual
- Draw a picture of the ways your favorite tree looks in each of the four seasons.
- A collage of pictures cut out from magazines.
- A book of leaf rubbings using five (5) leaves that you think are interesting.
- Make a poster no larger than 14"x22" that is tree shaped and glue things you found on a walk in a local park that have fallen from trees onto it.

*Select a different option for each year.

VEGGIE ART

Create art by using fruits and vegetables. Assemble them (using all edible parts) to build an animal or any creature you wish.



WILDLIFE

Exhibit one (1) of the following:

- Complete a poster about the animals you learned about as stated in the project book. Mount on a 14"x22" poster board.
- Complete a poster about two (2) birds and two (2) mammals as stated in the project book. Mount on a 14"x22" poster board.
- Write a story about an animal and provide a picture. Put in a plastic sleeve.

WOODWORKING

Complete the project book and one (1) of the following:

- Bird Feeder
- Bookends
- Shelf



COMMUNICATIONS

Mini 4-H Communications projects help young members build confidence by practicing simple speaking and listening skills. Through fun activities like reciting pledges, sharing about their favorite projects, or showing how to do something, youth learn to express their ideas clearly. These projects also encourage good manners, cooperation, and self-confidence, helping Mini 4-H members feel comfortable speaking in front of others and preparing them for future 4-H experiences.

Participants are encouraged to wear 4-H attire or nice casual clothing. Presentations will occur on Wednesday, June 10th at 1:00 pm during the Communications Project Judging at Lewis Creek Baptist Church.

PUBLIC SPEAKING

Present one (1) of the following based on grade level:

- a. Kindergarten – Recite the Pledge of Allegiance
- b. 1st Grade – Recite the 4-H Pledge
- c. 2nd Grade – Give a short talk (about 1 minute) on their favorite 4-H project or something they enjoy learning about in 4-H.

Participants will present in front of judges and a small audience. Members may choose to present individually or with a partner. Parents and leaders may stand nearby for encouragement if needed, but should not prompt or speak for the participant.



DEMONSTRATION

Present a demonstration (about 2-3 minutes long) on any safe, age-appropriate topic.

Each Mini 4-H member will:

- a. Introduce themselves
- b. Tell the audience what they will demonstrate
- c. Show and explain how to do or make something step-by-step
- d. Show or describe the finished product (if possible)
- e. Answer a simple question from the judge

Participants should bring the materials they need for their demonstration. Items should be simple, easy to handle and safe for young children. Participants may stand or sit at a table. Parents or leaders may help set up materials, but should not assist during the demonstration.

Simple demonstration ideas for Mini 4-H members:

- *How to make a peanut butter and jelly sandwich*
- *How to wash your hands properly*
- *How to plant a seed in a cup*
- *How to make trail mix or fruit kabobs*
- *How to fold a paper airplane*
- *How to make a simple craft (friendship bracelet, paper flower, etc.)*
- *How to set a table*
- *How to tie your shoes*

Projects

FUN POULTRY DECORATED EGG SHOW

This is a FUN SHOW and is open to all 4-Hers and Mini 4-Hers. Exhibitors in this show are NOT required to enter birds. They may enroll by signing up in 4-H Online.

Classes are divided into Grades K-2, Grades 3-7, and Grades 8-12.

Painted Egg Competition –

- One (1) egg consists of an entry. Multiple entries accepted. (Egg size may be chicken, goose, duck, guinea, or turkey.)
- Entry must be hard boiled or blown.
- Egg is painted or inked. NO adornment or decorations added.
- Some type of upright support recommended.
- Egg must be painted/inked by the exhibitor.



Decorated Egg Competition –

- One (1) egg consists of an entry. Multiple entries accepted. (Egg size may be chicken, goose, duck, guinea, or turkey.)
- Entry must be hard boiled or blown.
- Egg is to be adorned or decorated but may have paint added.
- Outline of egg must be recognizable.
- Egg decoration must be created by the exhibitor.



Bring your painted or decorated egg on Sunday, June 14th to the Poultry Barn anytime between 10:00am-3:00pm. Judging will be on Wednesday afternoon during the Poultry Show (the show starts at 3:00pm).

DON'T FORGET TO ENTER YOUR PROJECT IN FAIR ENTRY FROM MAY 1-21, 2026. THIS WILL ENSURE THAT YOUR ENTRY TAG IS MAILED TO YOU. YOU WILL ATTACH THE ENTRY TAG TO YOUR EXHIBIT.

***SEE PAGE 7 FOR ADDITIONAL INFORMATION.**

Mini 4-H Animal Projects

Cats will be shown in conjunction with the 4-H Cat Show on Thursday, June 18th and will start at 11am in the Brinson Building at the Shelby County Fairgrounds.

Goats, Sheep and Swine will be shown on Tuesday, June 16th beginning at 6:00pm in the Livestock Arena at the Shelby County Fairgrounds.

Rabbits will be shown in conjunction with the 4-H Rabbit Show on Thursday, June 18th and will start at 9:00am in the Livestock Area at the Shelby County Fairgrounds.

Due to space limitations and health requirements, we cannot allow a Mini 4-Her to bring an animal that they may own to show at the fair. You will be able to pair up with a current 4-H member and show their animal.

- ❖ Cats – to complete the project, you will show a cat at the Shelby County Fair. The cat for the show will be provided.
- ❖ Goats – to complete the project, you will show a goat at the Shelby County Fair. The goat for the show will be provided.
- ❖ Sheep – to complete the project, you will show a sheep at the Shelby County Fair. The sheep for the show will be provided.
- ❖ Swine – to complete the project, you will show a pig at the Shelby County Fair. The pig for the show will be provided.
- ❖ Rabbits – to complete the project, you will show a rabbit at the Shelby County Fair. The rabbit for the show will be provided.

Mini 4-Hers showing livestock MUST have turned in the completed Mini 4-H Liability Release Form.

Mini 4-H members enrolled in any of these five (5) projects will be invited to attend any Workshops given for the 4-H members.

While Mini 4-H projects are not State Fair exhibits, we are very proud you have joined the Shelby County 4-H program this year! Any youth enrolled in 3rd – 12th grades may join our regular 4-H program, and possibly, qualify for State Fair competition.

Mini 4-H Day Camp Application

July 11, 2026

9:00am – 3:00pm

Name _____ Grade (as of January 1 of current year)

Address _____ City _____ Zip

Phone _____ Email

Parent/Guardian Name

T-Shirt Size _____

Cost for Mini 4-H Day Camp is \$20 for the first child in the family, \$15 for each additional child in the family.
Make checks payable to **Purdue CES**.

1. I understand that if poor behavior is causing problems to other campers, you may be removed from camp.
2. The day camp is held at the Shelby County Fairgrounds (Family Arts Building). I understand that I must provide transportation to and from the fairgrounds for my child to arrive promptly at 9:00am and be picked up at 3:00pm.
- 3. I will supply a sack lunch for my child.**
4. I understand that completion of the youth health form is necessary before my child can attend camp.
5. I agree to fulfill the expectation of a camper and camp parent.
6. My child is currently enrolled as a Mini 4-H member in Shelby County.

Signature of legal parent/guardian _____ Date

Return completed camp registration form and fee to:

20 W. Polk Street, Suite 201, Shelbyville, IN 46176

ALL FORMS AND REGISTRATION FEE DUE BY 4PM ON JUNE 26, 2026

Purdue University is an equal opportunity/ equal access university. If you have special needs, please indicate on the registration form, or all us prior to the registration deadline at 317- 392- 6460. If you have any special dietary needs, please indicate on the registration form. or call us prior to the camp.

HEALTH FORM

Attach current photo
here. Photo will not be
returned.

4-H Camp

County _____

Dorm and/or Room Number _____

Name _____

Birthdate _____

Street Address _____ City _____ State _____ ZIP code _____

(_____) _____

Day Phone Number

Evening Phone Number _____

Youth Cell (if applicable) _____

List any activities the participant should avoid (i.e., swimming): _____

Physical Record of Participant

	<u>Yes</u>	<u>No</u>
Heart Condition	_____	_____
Diabetes	_____	_____
Ear Infections	_____	_____
Bedwetting	_____	_____
Allergy to any medication	_____	_____
List medicines allergic to: _____		
Food allergies or dietary restrictions	_____	_____
List allergies/restrictions: _____		
Other allergies (i.e., dust, pollen, animals)	_____	_____
List other allergies _____		
All immunizations required for school are current	_____	_____
Date of last tetanus shot: _____		

Please list any current medication being taken on reverse side of this form.

Please describe any current physical, mental, or psychological conditions requiring medication, treatment, or special restrictions or considerations while at camp: _____

PARENTAL AUTHORIZATION

Pursuant to Indiana Code Paragraph 16-36-1-6 and subject to any limitations listed below, I request and authorize Purdue University Cooperative Extension Service employees and their authorized agents to arrange for all reasonably necessary medical care, including transportation and hospitalization, for my child while in attendance at and participating in 4-H Youth Development events and activities.

I also understand that, as a result of my child's participation in this program, it will be necessary for Purdue CES employees and other authorized personnel with the program to have access to relevant medical information pertaining to my child, and I authorize the use and disclosure of my child's medical information to promote a safe and healthy experience for my child.

Parent/Legal Guardian Signature _____ Date _____ Witness to Parent/Legal Guardian _____ Date _____

Parent/Guardian Telephone: (_____) _____ (_____) _____
Home Work

Both above signatures required for acceptance to participate

In case we cannot reach you, please list the name and phone number of a second party to contact:

Name _____

Address _____

Telephone: (_____) _____ (_____) _____
Home Work

Please complete the addendum on reverse side

ADDENDUM TO THE 4-H CAMP YOUTH HEALTH FORM

Complete this form for **prescription medications and over-the-counter medications** that are being taken by the student at the time of the event. These medications will be administered by an Extension staff member or other authorized personnel.

Medications must be carried in their original containers.

County: _____

4-H member's Name: _____

Name of Medication: _____

What Illness/Condition is this medication intended for: _____

Check any of the following that apply:

_____ Tylenol/Ibuprofen may be administered by 4-H Youth Development event personnel

_____ Benadryl may be administered by 4-H Youth Development event personnel

Youth's weight: _____ lbs.

Dosage: _____ Refrigeration? Yes _____ No _____

Special Instructions: _____

Other information (if applicable): _____

Date(s) to Administer: From _____ To _____

Prescribing Doctor's Name: _____ Phone: () _____

Event: _____ Date (s): _____

Signature of Parent/Legal Guardian Date

Signature of Parent/Legal Guardian Date

Mini 4-H Liability Release Form

The safety and well being of our 4-H youth is of the utmost importance. Although kindergarten is specified as the time when a child may begin participation in some 4-H events and activities, parents are encouraged to take into consideration their child's physical and mental development before agreeing to let the child begin to show, work with, or care for animals. Each child matures at a different rate, and children in grades K-2 may still be too young to begin showing, working with, or caring for animals.

The Indiana 4-H Youth Development Program at Purdue University has agreed to allow Mini 4-H members in grades K-2, to participate in NON-COMPETITIVE animal projects subject to certain conditions. These conditions are specified below.

"Mini 4-H members, in grades K through 2, will be allowed to show, work with, or care for animal projects after their parent or legal guardian has signed a liability release. Mini 4-H members may independently show, work with, or care for animals that weigh 300 pounds or less. Mini 4-H members may only show, work with, or care for animals over 300 pounds when they are assisted by a parent, legal guardian, or another adult designated in writing by parent or legal guardian." (*The word assisted means that the adult has control of the animal at all times.*) Mini 4-H members are not required to own the animals they participate with in Mini 4-H. All animals on exhibit should meet the regulations of the Indiana Board of Animal Health Requirements for Exhibition of Domestic Animals in Indiana and meet the vaccination requirements set by Indiana 4-H.

Mini 4-H members exhibiting horses must wear ASTM or SEI standard F1163 (or above) certified helmets whenever mounted. The parent/guardian is responsible to see that this specified headgear is properly fitted with the approved harness in place and fastened whenever a rider is mounted.

I understand that participating in 4-H activities can involve certain risks to my child. Those risks may include injury or harm, including, but not limited to, bodily injury, disability, exposure to COVID-19 and other viruses and or illnesses, and death. During virtual 4-H activities, I understand that program staff are not providing supervision for my child during the online program, and the Released Parties do not have control over the information available through the internet or other electronic data sources beyond that which is a part of the 4-H activity. On behalf of my child, I fully assume the inherent risks associated with my child participating in 4-H activities and assert that my child has chosen to participate in this program with my express approval. I hereby release and discharge Purdue University, The Trustees of Purdue University, the _____ County Commissioners, the _____ County Cooperative Extension Service, and each of their trustees, officers, appointees, agents, employees, and volunteers ("Released Parties") from all claims which my child or I might have for any injury or harm to my child, arising out of my child's participation in any activity related to the 4-H program, even if such injury or harm is caused by the negligence or fault of any of the Released Parties. I do not, however, release these individuals and entities from liability for intentional, willful or wanton acts and this release shall not be construed to include such acts.

Mini 4-H member's name

Other Adult Designee - Print Name

Signature of Parent/Legal Guardian

Date

Signature of Parent/Legal Guardian

Date

Fashion Revue Script

Categories (circle one):

Informal or casual

Dress up

Free Choice

Name _____

Parents: have your child tell about their outfit and transcribe this for them. They will tell about where they will wear their outfit and why they chose what they did. Have them describe their ensemble.

This image shows a single sheet of white paper with horizontal ruling lines. The lines are evenly spaced and run across the width of the page. There are no margins, text, or other markings on the paper.