



Samantha Williams

4-H Youth Development  
County Extension Director

April 2025

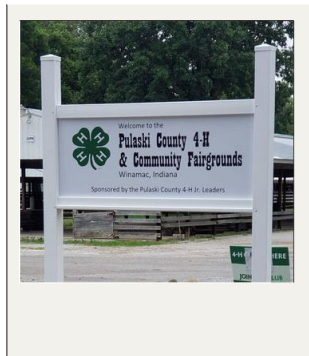
Facebook: Purdue Extension-Pulaski County  
Instagram: @purdueextensionpulaskicounty



## 2025 Fair Check-In Dates

### Animal Unloading & Weigh-In Dates

- **Thursday, June 26**
  - > 5pm-7pm | swine unload
  - > 6pm-8pm | beef, dairy, goats unload
  - > 6pm-8pm | swine weigh-in
  - > 7:30pm-8:30pm | beef, dairy weigh-in
  - > 8pm-9pm | sheep unload and weigh-in
  - > 8:30pm-9pm | goat weigh-in
- **Friday, June 27**
  - > 6am-8am | poultry and rabbit check-in



## 2025 Fair Dates

**Pulaski County 4-H & Community Fair**

June 27 - July 2, 2025

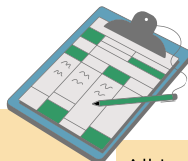
**Indiana State Fair**

August 1 - 17, 2025 | closed Mondays

The project check-in schedule for 2025 is available in your 4-H handbooks. You can find an online copy through [our website](#).

### Project Check-In & Judging Dates

- **Friday, June 20**
  - > 6pm-8pm | early entry of 4-H projects for Saturday
- **Saturday, June 21**
  - > 8am-10am | check-in & Judge 4-H Projects; Aerospace, Animal Education, Arts & Crafts, Beekeeping, Bicycle, Books, Child Development, Christmas Ornaments, Collections, Computers, Do Your Own Thing, Entomology, Farm Toy Scene, Forestry, Genealogy, Geology, Gift Wrapping, Health, Home Environment, Lego, Photography, Recycling, RC Car Posters, Scrapbooking, Shooting Sports, Small Engines, Soil & Water Science, Sports, Sport Fishing, Tractor Poster, Vet Science, Weather, Wildlife, Woodworking
  - > Consumer Clothing Notebooks are due at this time
- **Wednesday, June 25**
  - > 6pm-8pm: check-in & Judge 4-H Foods and Microwave Cooking Projects
- **Thursday, June 26**
  - > 8AM-8:30am | check in for sewing
  - > 8:30am | sewing fashion review & judging
  - > 10am | dog obedience and showmanship
  - > 10am-11am | check-in & Judge all 4-H Crops, Floriculture, Garden
  - > 12pm-1pm | check-in & Judge 4-H Cake/Cupcake Decorating Projects
  - > 1pm-2pm | check-in and Judge 4-H Electric Projects
- **Wednesday, July 2**
  - > 3pm-5pm | project check-out



### Livestock & Project Show Dates

- **Thursday, June 26**
  - > 10am | dog obedience and showmanship
- **Friday, June 27**
  - > 11am | poultry show
- **Saturday, June 28**
  - > 9am | swine show
  - > 3pm | goat show
- **Sunday, June 29**
  - > 9am | sheep show
  - > 4pm | horse & pony contesting
  - > 6pm | beef show
- **Monday, June 30**
  - > 9am | rabbit show
  - > 2pm | dairy show
- **Tuesday, July 1**
  - > 9am | horse & pony pleasure show
  - > 9pm | non-auction animals release
- **Wednesday, July 2**
  - > 9am | cat & pet pal
  - > 10am | dog agility
  - > 3pm-5pm | project check-out



### Attention Livestock Exhibitors:

Our last QLC training will be on **April 29th** at Bethel Bible Church. Completing either a QLC or YQCA training is *required* for anyone showing livestock at the fairs, except Mini 4-H. If you choose to complete an online YQCA training, you *must* submit a copy/screenshot of the certificate to the Extension Office. [Read more and register on our website.](#)

All Indiana Exhibitors have to provide the Indiana State Board of Animal Health required Premises ID number on all entry forms for beef and dairy cattle, goats, swine, and sheep. To obtain a Premises ID #, please contact the Indiana State Board of Animal Health at 877-747-3038. Information can be found on the Indiana State Board of Animal Health website at [www.in.gov/boah](http://www.in.gov/boah).

### 4-H Livestock Auction

#### Pulaski County Buyer's Group

To donate, contact Michelle Schmicker at 574-595-0629 by July 1st to be included in the group.

If you plan to auction livestock at the 2025 Pulaski County 4-H & Community Fair, please be sure to read this: [Important Update](#)


**Samantha Williams**

 4-H Youth Development  
 County Extension Director

April 2025

Facebook: Purdue Extension-Pulaski County

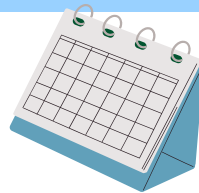
Instagram: @purdueextensionpulaskicounty



### May 15 is a big deadline! Check out this list and take note of any that apply to you:

- animals entered into 4-H Online
- add/drop 4-H projects
- swine tags picked up and in the pig's ear (\$3/tag, pick up at Extension Office)
- poultry Association/NPIP certification, health form, and County Poultry Enrollment form due to the Extension Office
- DNA envelopes for state fair
- cat identification cards due to the Extension Office

**4-H Poultry Members**  
 Please review the poultry rules and general livestock rules. Members enrolling in the duck, turkey, pullet and exhibition chicken classes should prepare to order their chickens early to give them time to grow in time for fair. Other classes should be reviewed as well. Also, make sure to get your poultry enrollment form with the poultry listed that are coming to the fair into the Extension Office by Thursday, May 15, 2025.



### 4-H Achievement Royalty and 4-H Council Scholarship

4-H Achievement Royalty is for any Pulaski County 4-H member in grades 9-12 and has been in 4-H for at least 5 years.

4-H Council Scholarship is for any Pulaski County 4-H member that is a Senior in high school.

Applications are available on our website:  
<https://extension.purdue.edu/county/pulaski>



### And here are some additional deadlines to be aware of as we get closer to the fair:

- April 25: 4-H scholarship submissions due
- April 25: 4-H achievement royalty applications due
- June 1: creative writing projects due to the Extension Office
- June 1: QLC or YQCA training completed
- June 7: FairEntry entries completed

Interested in showing a Rabbit Meat Pen or a Single Fryer? First year through advanced rabbit members are eligible to show in each of these classes. Meat Pens and Single Fryers must be raised by the 4-H rabbit member. Each rabbit must weigh between 3 ½ and 5 ½ lbs., maximum age is 10 weeks. Six Class Breeds only.



The chart below will guide you when to breed your Does for the 2025 Pulaski County 4-H Fair. Meat Pen and Single Fryer maximum age is 10 weeks (70 days) old. For more information regarding the rabbit project, check the 2025 Pulaski County Rabbit Rules.

Breed	Born	Age
03-23-25	04-22-25	70 days old 10 weeks old (maximum age)
03-30-25	04-29-25	63 days old 9 weeks old
04-06-25	05-06-25	56 days old 8 weeks old

### State Fair Exhibit Hall

#### Worker Opportunity

Workers will be needed  
 July 26 through August 19, 2025.

For more information and to fill out an application, visit  
<https://extension.purdue.edu/4-H/get-involved/state-programs/state-fair-programs/exhibit-hall-worker.html>

### Remaining Livestock Tagging/ID Dates

- May 3rd 8am-10am  
 sheep, goat, feeder calves
- June 14, 9am-11am  
 poultry blood testing and rabbit tattoo

### Rabbit Ambassador Meeting

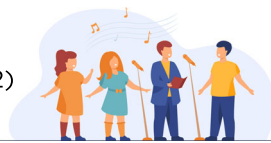
Tuesday, April 29th, 7:30pm (EST)  
 Bethel Bible Church

### 4-H Sheep Clinic


Saturday, May 3, 2025  
 Starts at 12:00pm (EST)  
 Pulaski County Fairgrounds

### 4-H Summer Trip Dates!

- 4-H Camp (grades 3-6)  
 June 4-6  
 registration open now
- 4-H Round-Up (grades 9-12)  
 June 23-25  
 registration open now
- 4-H Academy (grades 7-9)  
 June 11-13  
 registration open now
- 4-H Band & 4-H Chorus (grades 9-12)  
 June 21-23  
 registration open now



Call our extension office with any questions and to begin registering for 4-H Academy, 4-H Round-Up, 4-H Band, and 4-H Chorus.



**LET'S GIVE BACK TO THE OLD GOLD AND BLACK!**

Show your support for the Purdue Extension of Pulaski County on Wednesday, April 30th with the Purdue Day of Giving!

Keep an eye out for more info in April and how you can make a donation.




**Samantha Williams**

 4-H Youth Development  
 County Extension Director

April 2025

Facebook: Purdue Extension-Pulaski County

Instagram: @purdueextensionpulaskicounty



## 4-H Online vs. FairEntry

 When do we need to use them?  
 Why do we use them both?

### 4-H Online

### FairEntry

#### Who?

- Parents/ Families
- ALL 4-H Members
- ALL Program Volunteers
- Specialty Groups

#### Who?

- 4-H Fair Exhibitors
- Superintendents
- Fair Judges
- Check-in Volunteers
- Media Outlets for Fair Results

#### What?

- Animal Identification
- Selecting project areas to explore.
- 4-H Trips and other events
- 4-H Scholarships Application
- Club rosters for 4-H Leaders

#### What?

- Preparation for county fair
- County Fair Project Labels
- State Fair Qualifying Entries
- Livestock Show Bills
- Organization of Fair Results

#### When?

From start to end of the program year: October through September.

#### When?

May 16th, 2025-June 7th, 2025 for 4-H members to enter exhibits

#### Where?

<https://v2.4honline.com/>

#### Where?

[pulaskicountyin.fairentry.com](http://pulaskicountyin.fairentry.com)

#### Why?

- To express interest in the 4-H Program
- Improved communication between County and State and 4-H Families

#### Why?

- Prepare for county and state fair
- Get accurate numbers for project display purposes, and stall assignments

You have entered information into 4-H Online for the year, but it's time to enter project information into FairEntry. You must do both! Check out this convenient chart to see what's needed in each and why they're both important.



If you find that you need assistance entering animals/information into 4-H Online and/or Fair Entry, please call the Extension Office to set an appointment. You will need to call by **May 5th** for 4-H Online and **June 1st** for Fair Entry to ensure that we can help everyone in a timely manner as we work on Fair preparations. If you see something that needs to be changed after the May 15th deadline, please contact our office.

### 4-H PROJECT HANDBOOKS

2025 4-H Livestock, Non-Livestock, and Mini 4-H handbooks are all available on our website:

<https://extension.purdue.edu/county/pulaski/4-h-non-livestock-project-handbook.html>

You can also pick up a physical copy at the Extension Office.

### 4-H CLUB MEETINGS

Meeting dates and times can be found on the calendar on our website:

<https://extension.purdue.edu/county/pulaski>

### 4-H ENROLLMENT

There is still time to enroll!  
 You can continue to add/drop projects until May 15th at [in.4honline.com](http://in.4honline.com)

**Mark your calendar!**  
**Mini 4-H Fun Day is being planned for May 17th.**  
 More details coming soon!

### Take note of these dates when the extension office will be closed:

- Friday, April 18 - Good Friday
- Monday, May 26 - Memorial Day
- Friday, July 4 - Independence Day
- Monday, September 1 - Labor Day

*If you are in need of accommodations to attend this program, please contact Sam Williams prior to the meeting at 574-946-3412 or [ssporled@purdue.edu](mailto:ssporled@purdue.edu) by April 15.*

*For special dietary needs contact Sam Williams at 574-946-3412 or [ssporled@purdue.edu](mailto:ssporled@purdue.edu) by April 15.*

*If you need an interpreter or translator, please contact Sam Williams prior to the meeting at 574-946-3412 or [ssporled@purdue.edu](mailto:ssporled@purdue.edu) by April 15.*