



# 4-H Sheep Project

Name: \_\_\_\_\_ 4-H Club \_\_\_\_\_

Leader Signature: \_\_\_\_\_ Date: \_\_\_\_\_



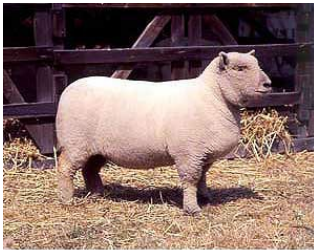
1.



2.



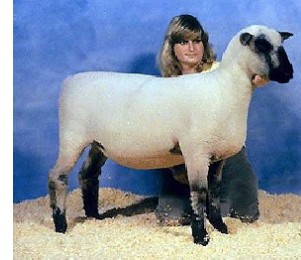
3.



4.



5.



6.

\_\_\_\_\_ Southdown

\_\_\_\_\_ Oxford

\_\_\_\_\_ Cheviot

\_\_\_\_\_ Dorset

\_\_\_\_\_ Shropshire

\_\_\_\_\_ Rambouillet

7. A sheep that is a year old is called a \_\_\_\_\_.

8. Low quality wool is called \_\_\_\_\_.

9. Match the following:

Ram Breed

A. Superior mothering ability

Ewe Breed

B. Either ram or ewe

Dual Purpose Breed

C. Meat-type

Answers to all the questions can be found in the Sheep Resource Handbook 4-H 194R

# 10. Sheep Equipment

SS Y X V J P P Y R M D S X S H  
 E Z X C Y R Q S W E S E L C E  
 L S T H E R M O M E T E R S A  
 A R B O S M S U A Y W L R D T  
 C E Y R O R A R F O M E A T L  
 S M V C C G T S T K P D W H A  
 R M C L B A U X C P A R F D M  
 X I J M G Q U U I U D Z X D P  
 H R H S B V E L A X L N I B S  
 N T M I X D C H F L L A Z M W  
 M F D P D L H C V H O I T D O  
 K O D Y O S I O J P M S K O D  
 E O D O W B T L Z Q L M U X R  
 U H W G E G N I R Y S I T Z R  
 L W U Z L C M Y O A E W C T F

Used to identify sheep E \_ \_ T \_ \_ \_  
 An instrument used to castrate E \_ \_ \_ \_ \_ \_ \_ \_ \_ \_  
 Used to lead sheep around H \_ \_ \_ \_ \_ \_ \_ \_ \_ \_  
 This will keep lambs warm H \_ \_ \_ \_ L \_ \_ \_ \_  
 Used to remove hoof H \_ \_ \_ T \_ \_ \_ \_ \_ \_  
 You can weigh sheep with this S \_ \_ \_ \_ \_ \_  
 A vial to give shots S \_ \_ \_ \_ \_ \_  
 Used to take temperatures T \_ \_ \_ \_ \_ \_ \_ \_ \_ \_  
 You may need to dry lambs with these T \_ \_ \_ \_ \_  
 Used to cut off fleece W \_ \_ \_ C \_ \_ \_ \_ \_ \_ \_ \_ \_ \_

# 11. Match the following retail cuts with its wholesale part:

- |                           |             |
|---------------------------|-------------|
| 1. _____ Round Steak      | A. Shoulder |
| 2. _____ Arm Chop         | B. Rack     |
| 3. _____ Riblets          | C. Loin     |
| 4. _____ Double Loin Chop | D. Leg      |
| 5. _____ Rack Roast       | E. Breast   |

12. If you give a lamb medicine in a vein it is called \_\_\_\_\_.

# 13. Find the following items on a feed tag:

**LAMB STARTER**  
**MEDICATED**  
 STARTER FOR GROWING LAMBS

FOR THE PREVENTION OF COCCIDIOSIS  
 CAUSED BY Eimeria ovina, Eimeria crandallis, Eimeria  
 ovinoidalis, Eimeria ninakohlyakimovae, Eimeria parva  
 AND Eimeria intricata IN SHEEP MAINTAINED IN  
 CONFINEMENT.

ACTIVE DRUG INGREDIENT  
 LASALOCID (AS LASALOCID SODIUM)  
 90 G/TON

GUARANTEED ANALYSIS

CRUDE PROTEIN	MIN 20.00%
CRUDE FAT	MIN 2.50%
CRUDE FIBER	MAX 10.00%
CALCIUM	MIN 0.75%
CALCIUM	MAX 1.25%
PHOSPHORUS	MIN 0.55%
SALT	MIN 0.40%
SALT	MAX 0.90%
SELENIUM	MIN 0.30 PPM
VITAMIN A	MIN 2,000.00 IU/LB

INGREDIENT USAGE  
 Processed Grain By-Products, Grain Products, Plant  
 Protein Products, Forage Products, Roughage Products,  
 Molasses Products, Ground Limestone, Salt, Lignin  
 Sulfonate, Potassium Sulfate, Magnesium Sulfate,  
 Magnesium Oxide, Sodium Selenite, Calcium Propionate,  
 Vitamin E Supplement, Vitamin A Acetate, Vitamin D-  
 3 Supplement, Zinc Sulfate, Zinc Oxide, Sodium Molyb-  
 date, Manganous Oxide, Calcium Iodate, Cobalt Carbon-  
 ate, Ferrous Sulfate.

FEEDING DIRECTIONS  
 Lamb Starter contains 45 mgs. of lasalocid per pound.  
 Feed continuously as the sole ration to growing lambs from  
 1 to 6 weeks of age at the rate of 0.33-1.55 pounds per  
 head per day to provide not less than 15 mgs. And not  
 more than 70 mgs. Of lasalocid per head per day. Provide  
 clean, fresh water at all times.

CAUTION  
 The safety of lasalocid in unapproved species has not been  
 established; do not allow horses or other equines access to  
 lasalocid as ingestion may be fatal; feeding undiluted or  
 mixing errors resulting in excessive concentrations of  
 lasalocid could be fatal to sheep.

MANUFACTURED BY:  
 SKILLATHON FEEDS

NET WEIGHT 50 POUNDS (22.7 KILOGRAMS)  
 OR AS SHOWN ON SHIPPING DOCUMENT

Active Drug Ingredient	_____
Maximum mgs/day	_____
Minimum Calcium	_____
Minimum Phosphorus	_____
Crude Protein	_____