



4-H Rabbit Project

Q & A Sheet D
Grade 9
Noble County

Name: _____ 4-H Club _____

Leader Signature: _____ Date: _____

Processing Meat Rabbits:

Answer the following questions **true** or **false**.

1. There are two methods for rendering a rabbit unconscious: stunning or dislocating its neck. _____
2. Studding is usually used on younger animals. _____
3. You slice the neck to prevent a blood clot from forming in the neck and to insure bleeding so the meat will have good color. _____
4. The hide on a young fryer, less than 12 weeks of age, will be difficult to remove from the carcass. _____
5. Be sure to remove the gallbladder away from the liver. Spilling the contents of the bladder and gallbladder on the meat may cause it to taste bad. _____
6. Refrigerate the carcass for 24 hours to allow the fat to harden and will make it easier for cutting. _____

Record Keeping

Match the type of record keeping to the definition.

___ Profit or Loss Statement

A. This includes all rabbits, buildings and equipment. It also includes feed and supplies on hand at the start of the year.

___ Operating expenses

D. This includes all rabbits, buildings and equipment, and feed and supplies on hand at the close of the year.

___ Individual doe performance record

G. These records usually include the buck's age, the dates when the buck was used for service, the number of does bred, litter size, and growth records of offspring.

___ Beginning inventory

F. These records usually include the doe's age, when she was bred, any breeding problems, when she was palpated, when she kindled, the number she kindled, the number raised, litter weights, and when kits were weaned.

___ Marketing income

C. These include the value of all rabbits and equipment sold, as well as all show premiums received.

___ Individual buck performance record

B. These include the cost of buildings and equipment, feed and supplies, veterinary services and supplies, rabbits purchased, registration fees, exhibitor fees, show supplies, transportation, advertising, etc.

___ Closing inventory

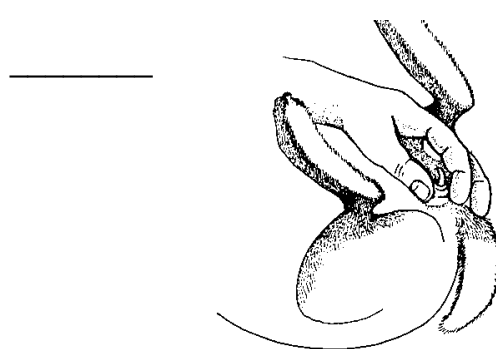
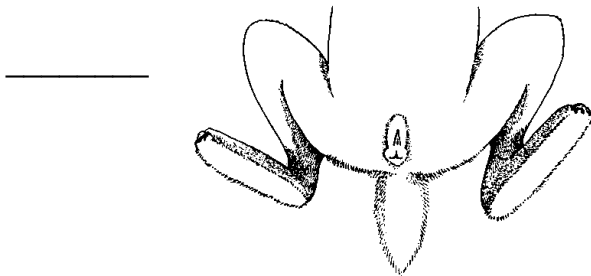
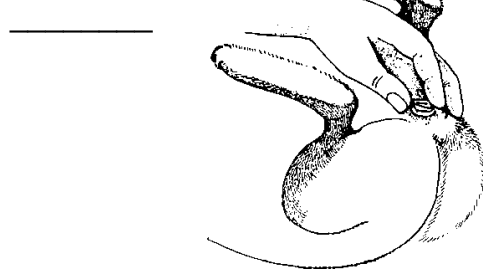
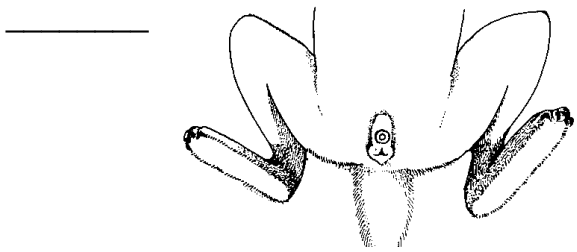
E. This shows if you have made a profit or experienced a loss with your rabbit project at the close of the project or end of the year.

THE ANSWERS TO THESE QUESTIONS CAN BE FOUND IN RABBIT RESOURCE HANDBOOK – OHIO STATE 4-H 228R

It is the policy of the Purdue University Cooperative Extension Service that all persons have equal opportunity and access to its educational programs, services, activities, and facilities without regard to race, religion, color, sex, age, national origin or ancestry, marital status, parental status, sexual orientation, disability or status as a veteran. Purdue University is an Affirmative Action institution. This material may be available in alternative formats.

Sexing your rabbit:

Write next to the picture whether it is a BUCK or a DOE.



Reproduction

Answer the following true or false.

1. Always take the buck to the doe's cage when breeding rabbits. _____
2. Female rabbits have regular estrus cycles. _____
3. A doe receptive to breeding will raise her back and lower her tail so that the buck can easily mount her for breeding. _____
4. The buck will squeal and fall either to the side or backward when a successful mating has occurred. _____
5. Rabbits should not be bred until they reach sexual maturity which can be anywhere from 4-11 months depending on their size. _____

