



# 4-H Rabbit Project

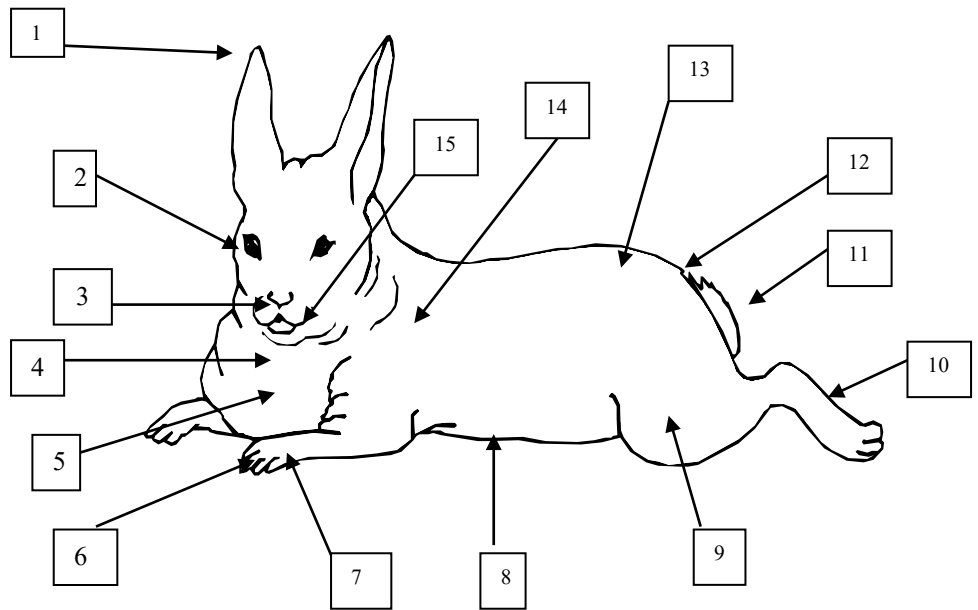
Q & A Sheet D  
Grade 4  
Noble County

Name: \_\_\_\_\_ 4-H Club \_\_\_\_\_

Leader Signature: \_\_\_\_\_ Date: \_\_\_\_\_

List the number  
beside the correct  
body part:

- \_\_\_\_\_ Belly
- \_\_\_\_\_ Chest
- \_\_\_\_\_ Dewlap (doe)
- \_\_\_\_\_ Ear
- \_\_\_\_\_ Eye
- \_\_\_\_\_ Foot
- 9 Hip
- \_\_\_\_\_ Hock
- \_\_\_\_\_ Loin
- \_\_\_\_\_ Mouth
- \_\_\_\_\_ Nose
- \_\_\_\_\_ Rump
- \_\_\_\_\_ Shoulder
- \_\_\_\_\_ Tail
- \_\_\_\_\_ Toenails



Nutrition and Feeding Answer the following True or False.

1. You can feed a rabbit anything. They do NOT have a special diet. \_\_\_\_\_
2. Rabbits need some of the same nutrients as people. \_\_\_\_\_
3. Rabbits should eat rabbit pellets. \_\_\_\_\_
4. A doe and her litter of 8 will eat 100 pounds of feed. \_\_\_\_\_
5. You do not need to have your rabbit on a schedule. \_\_\_\_\_

THE ANSWERS TO THESE QUESTIONS CAN BE FOUND IN RABBIT RESOURCE HANDBOOK – OHIO STATE 4-H 228R

It is the policy of the Purdue University Cooperative Extension Service that all persons have equal opportunity and access to its educational programs, services, activities, and facilities without regard to race, religion, color, sex, age, national origin or ancestry, marital status, parental status, sexual orientation, disability or status as a veteran. Purdue University is an Affirmative Action institution. This material may be available in alternative formats.

Match the following

Red Urine

Growing new fur.

Weepy Eye

Sores on hind legs.

Molting

Calcium oxalate or calcium carbonate in the urine.

Sore Hocks

Can cause a blocked tear duct.

Ringworm

These should be trimmed on a regular basis.

Toenails

Can transfer to people.

Quarantine. Fill in the blanks.

Rabbits should be placed in \_\_\_\_\_ when they first show signs of \_\_\_\_\_. If they have been exposed to an infectious \_\_\_\_\_, they should be placed in quarantine. It is also good practice to quarantine your rabbits after a \_\_\_\_\_ when they have been around \_\_\_\_\_ from other \_\_\_\_\_. All \_\_\_\_\_ rabbits should be quarantined. Quarantine should be at least \_\_\_\_\_ . Examine rabbits every \_\_\_\_\_ for \_\_\_\_\_ of illness. Work with quarantined rabbits after you have \_\_\_\_\_ working with other rabbits. Keep \_\_\_\_\_ separate from those you wear to other parts of the herd. Wash in \_\_\_\_\_ water regularly. You should also have separate \_\_\_\_\_ and should \_\_\_\_\_ them or wear ones that you can \_\_\_\_\_ away.

Word Bank (you will NOT use all of the words)

clothes

coat

cold

day

disease

disinfect

finished

five

herds

hot

illness

months

new

old

quarantine

rabbits

shoes

show

signs

started

throw

two

weeks