



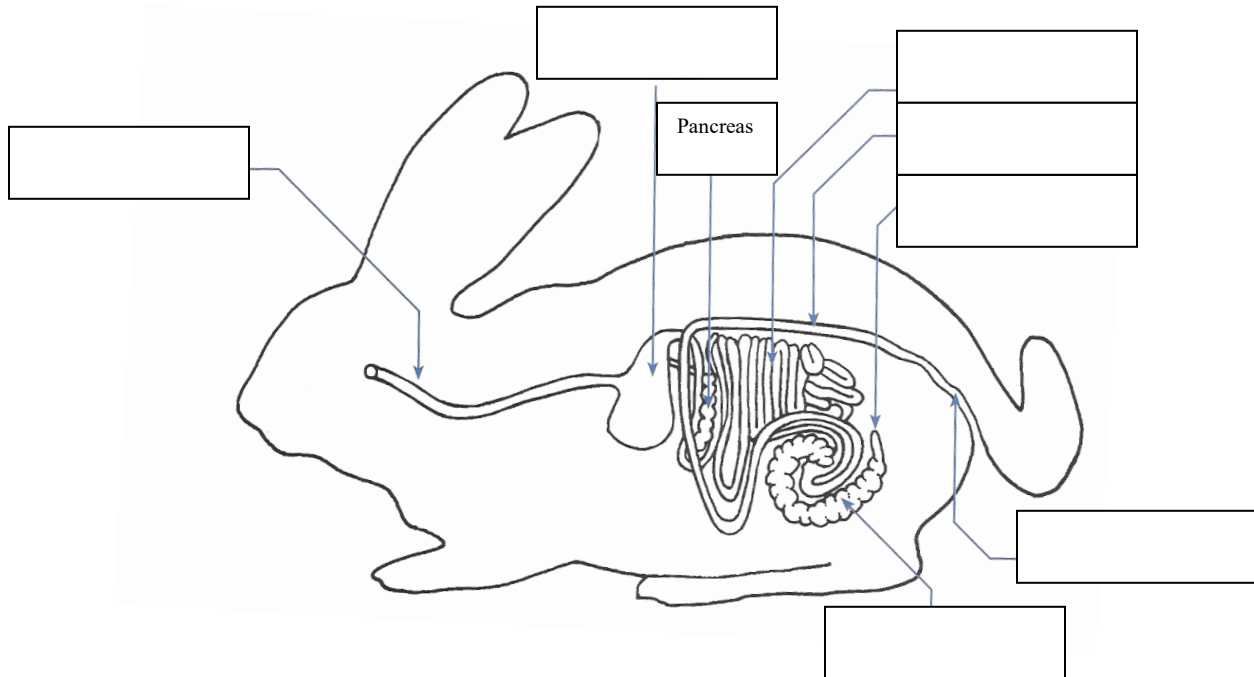
# 4-H Rabbit Project

Q & A Sheets D  
Grade 12  
Noble County

Name: \_\_\_\_\_ 4-H Club \_\_\_\_\_

Leader Signature: \_\_\_\_\_ Date: \_\_\_\_\_

Put the name of the digestive system in the blank provided.



## Coprophagy

Fill in the blanks.

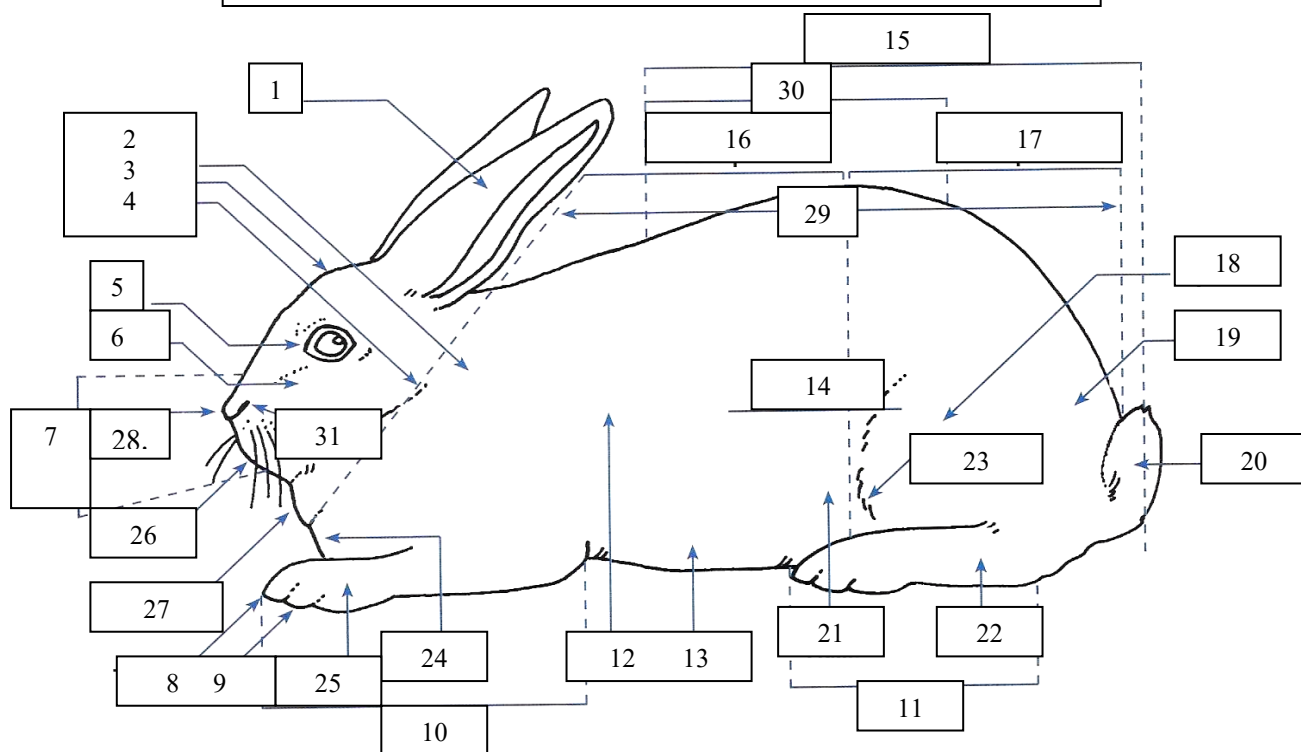
An instinctive behavior of rabbits called \_\_\_\_\_ is the act of eating their \_\_\_\_\_ pellets. Two other names for this are: \_\_\_\_\_ or \_\_\_\_\_.

Actually, the rabbit is not eating feces, but is eating \_\_\_\_\_ pellets called \_\_\_\_\_. Cecotropes are also called \_\_\_\_\_ feces. Cecotropes are soft, \_\_\_\_\_ pellets secreted in \_\_\_\_\_ clusters, covered by a gelatinous membrane, and produced by the rabbit's \_\_\_\_\_. Coprophagy is necessary for the rabbit to complete the \_\_\_\_\_ process, allowing efficient utilization of the hard to digest \_\_\_\_\_ in \_\_\_\_\_. It is also an important way of providing the B complex \_\_\_\_\_ requirements.

THE ANSWERS TO THESE QUESTIONS CAN BE FOUND IN RABBIT RESOURCE HANDBOOK – OHIO STATE 4-H 228R

It is the policy of the Purdue University Cooperative Extension Service that all persons have equal opportunity and access to its educational programs, services, activities, and facilities without regard to race, religion, color, sex, age, national origin or ancestry, marital status, parental status, sexual orientation, disability or status as a veteran. Purdue University is an Affirmative Action institution. This material may be available in alternative formats.

Using the chart in your book identify the parts of the rabbit.



1. \_\_\_\_\_
2. \_\_\_\_\_
3. \_\_\_\_\_
4. \_\_\_\_\_
5. \_\_\_\_\_
6. \_\_\_\_\_
7. \_\_\_\_\_
8. \_\_\_\_\_
9. \_\_\_\_\_
10. \_\_\_\_\_
11. \_\_\_\_\_
12. \_\_\_\_\_
13. \_\_\_\_\_
14. \_\_\_\_\_
15. \_\_\_\_\_

16. \_\_\_\_\_
17. \_\_\_\_\_
18. \_\_\_\_\_
19. \_\_\_\_\_
20. \_\_\_\_\_
21. \_\_\_\_\_
22. \_\_\_\_\_
23. \_\_\_\_\_
24. \_\_\_\_\_
25. \_\_\_\_\_
26. \_\_\_\_\_
27. \_\_\_\_\_
28. \_\_\_\_\_
29. \_\_\_\_\_
30. \_\_\_\_\_
31. \_\_\_\_\_