



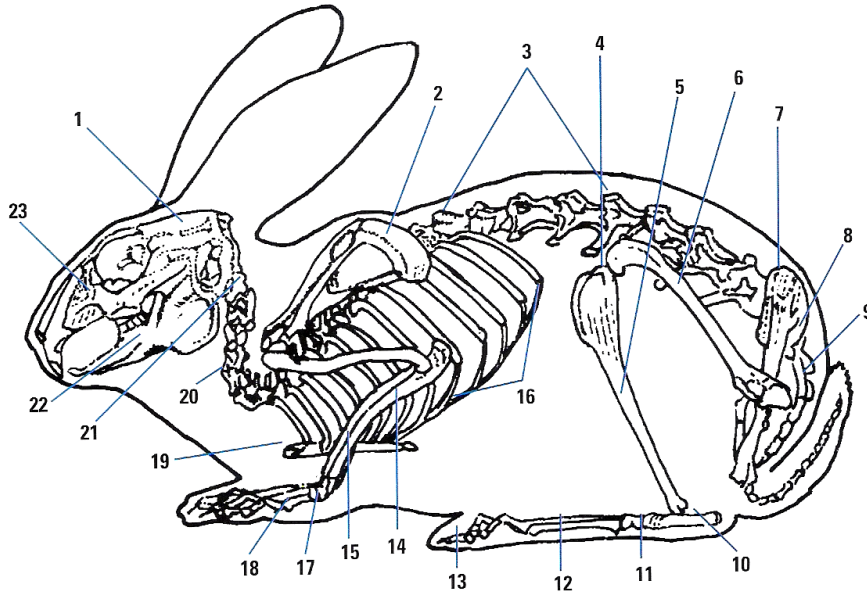
# 4-H Rabbit Project

Q & A Sheet D  
Grade 11  
Noble County

Name: \_\_\_\_\_ 4-H Club \_\_\_\_\_

Leader Signature: \_\_\_\_\_ Date: \_\_\_\_\_

Write the correct skeletal part for each number.



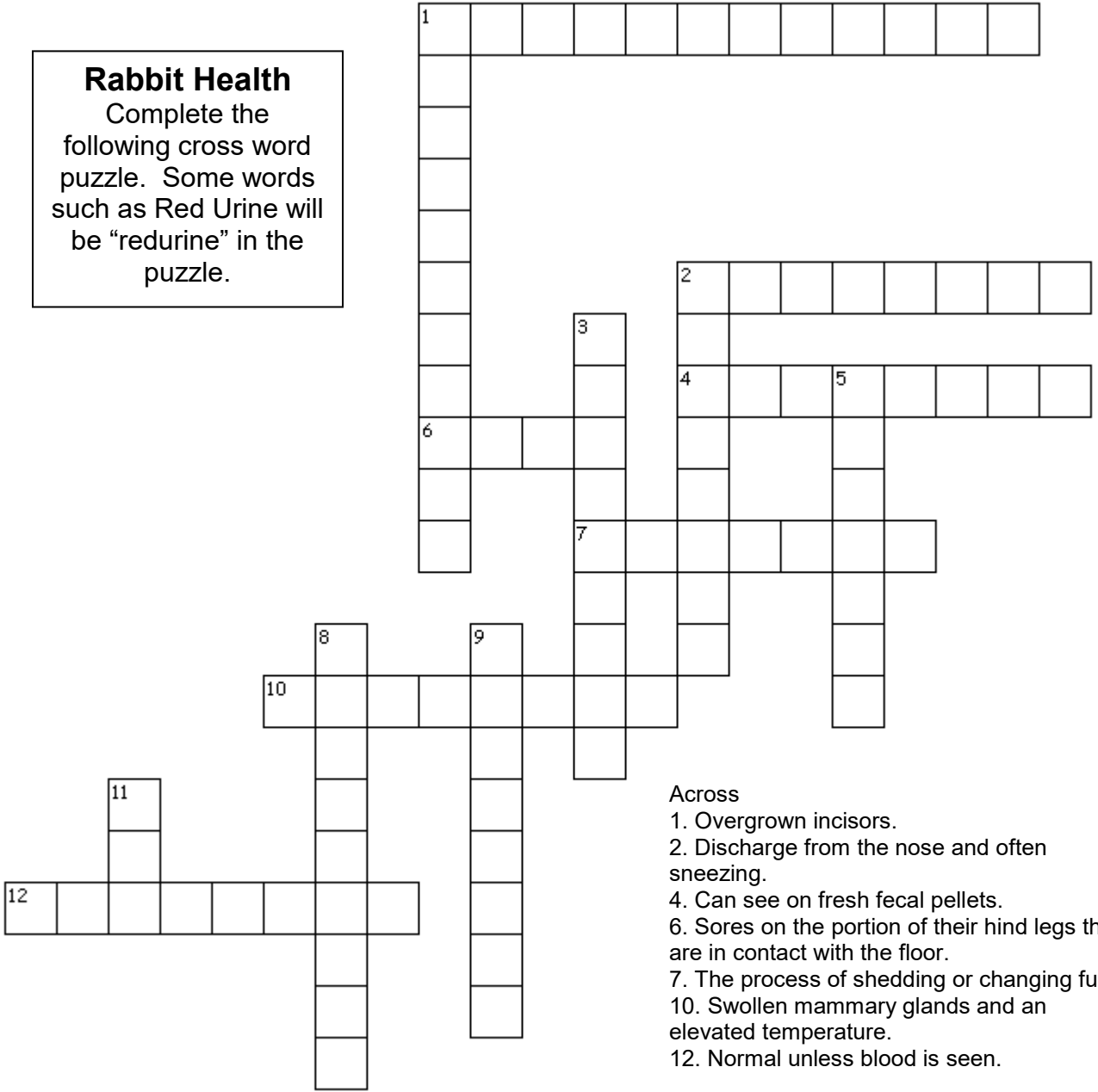
- 1. \_\_\_\_\_
- 2. \_\_\_\_\_
- 3. \_\_\_\_\_
- 4. \_\_\_\_\_
- 5. \_\_\_\_\_
- 6. \_\_\_\_\_
- 7. \_\_\_\_\_
- 8. \_\_\_\_\_
- 9. \_\_\_\_\_
- 10. \_\_\_\_\_
- 11. \_\_\_\_\_
- 12. \_\_\_\_\_

- 13. \_\_\_\_\_
- 14. \_\_\_\_\_
- 15. \_\_\_\_\_
- 16. \_\_\_\_\_
- 17. \_\_\_\_\_
- 18. \_\_\_\_\_
- 19. \_\_\_\_\_
- 20. \_\_\_\_\_
- 21. \_\_\_\_\_
- 22. \_\_\_\_\_
- 23. \_\_\_\_\_

THE ANSWERS TO THESE QUESTIONS CAN BE FOUND IN RABBIT RESOURCE HANDBOOK – OHIO STATE 4-H 228R

It is the policy of the Purdue University Cooperative Extension Service that all persons have equal opportunity and access to its educational programs, services, activities, and facilities without regard to race, religion, color, sex, age, national origin or ancestry, marital status, parental status, sexual orientation, disability or status as a veteran. Purdue University is an Affirmative Action institution. This material may be available in alternative formats.

**Rabbit Health**  
 Complete the following cross word puzzle. Some words such as Red Urine will be “redurine” in the puzzle.



- Across
1. Overgrown incisors.
  2. Discharge from the nose and often sneezing.
  4. Can see on fresh fecal pellets.
  6. Sores on the portion of their hind legs that are in contact with the floor.
  7. The process of shedding or changing fur.
  10. Swollen mammary glands and an elevated temperature.
  12. Normal unless blood is seen.

- Down
1. Inflamed eyes and milky tears.
  2. Sores or scabs on the external genitalia.
  3. Difficulty breathing, bluish lips, poor hair coat, low rate of weight gain, poor overall appearance, and sudden death.
  5. Head is severely twisted to one side or the other.
  8. Rabbits with this will shake their heads violently or dig at the infected part of the body.
  9. Superficial, crusty sores, usually first found on the rabbit’s feet or face.
  11. Depression, loss of appetite and difficulty breathing.