

# PURDUE EXTENSION NOBLE COUNTY

## 4-H DAIRY WORKSHEETS

Grade 3-D



Name: \_\_\_\_\_

4-H Club: \_\_\_\_\_

Leader Signature: \_\_\_\_\_

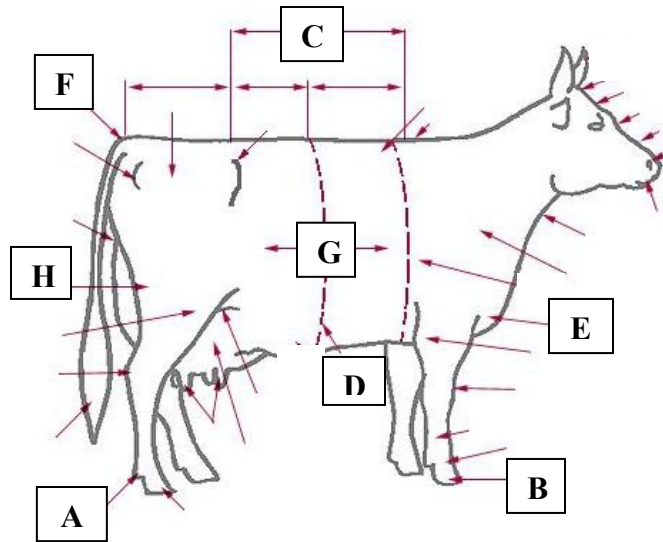
Date: \_\_\_\_\_

**Matching Identification:** Please write the letter of the location a breed began (originated) with the correct breed of cow.

- |                      |   |
|----------------------|---|
| 1. _____ Holstein    | A. County of Ayr, Scotland                |
| 2. _____ Jersey      | B. England                                |
| 3. _____ Guernsey    | C. Switzerland                            |
| 4. _____ Shorthorn   | D. Netherlands                            |
| 5. _____ Ayrshire    | E. Island off the coast of France         |
| 6. _____ Brown Swiss | F. British island off the coast of France |

**Part Identification:** Please write the correct part name on the line provided with the correct letter.

- A. \_\_\_\_\_
- B. \_\_\_\_\_
- C. \_\_\_\_\_
- D. \_\_\_\_\_
- E. \_\_\_\_\_
- F. \_\_\_\_\_
- G. \_\_\_\_\_
- H. \_\_\_\_\_



**Care, Housing & Safety:** Please write the correct answer on the line provided to correctly complete the statement.

1. Where would you write for breed information on Jersey cattle?

\_\_\_\_\_

\_\_\_\_\_

\_\_\_\_\_

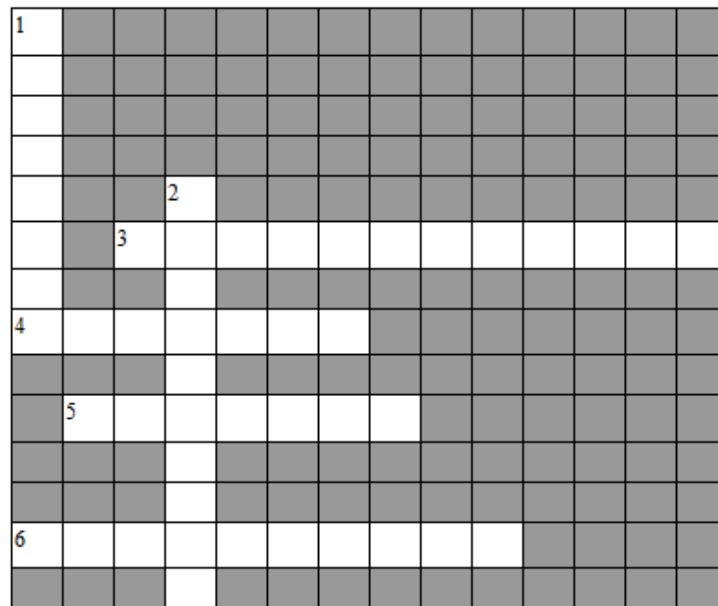
If the Jersey Association has a website, what is their webpage address?

\_\_\_\_\_

Answers can be found in the OSU Dairy Resource Handbook – 4-H 127R.

2. When purchasing an animal, decide what your \_\_\_\_\_ are for the \_\_\_\_\_ and the \_\_\_\_\_ before you make any final decisions.
3. A young dairy animal under six months of age is a \_\_\_\_\_ whereas a young female dairy animal that has not given birth is a \_\_\_\_\_.
4. Calves from birth to after \_\_\_\_\_ should be housed \_\_\_\_\_. This prevents disease transfer from \_\_\_\_\_ contact.
5. Most animals are creatures of \_\_\_\_\_ and respond \_\_\_\_\_ to \_\_\_\_\_ activities.
6. When buying an animal from a local dairy producer you have the opportunity to see \_\_\_\_\_ and to look at the \_\_\_\_\_ by looking at the other animals on the \_\_\_\_\_.
7. To safely handle an animal, you must be aware of the animal's \_\_\_\_\_ zone or \_\_\_\_\_ zone. This zone is known as the \_\_\_\_\_ space around them.
8. Dairy animals have a \_\_\_\_\_ instinct that causes them to want to \_\_\_\_\_.

**Show Preparation Cross Word:** Please write the correct answers in the spaces provided.



**ACROSS**

3. appropriate clothing to wear during a show
4. place where you would keep all of your show items during the fair
5. used to wash and clean your animal
6. used to lead your animal at home or on non-show days

**DOWN**

1. used to trim hair on your animal
2. used to lead your animal in the show ring