

# 4-H Llama & Alpaca

Name: \_\_\_\_\_ 4-H Club \_\_\_\_\_

1. Name four members of the South American Camelid Family.

1. \_\_\_\_\_

3. \_\_\_\_\_

2. \_\_\_\_\_

4. \_\_\_\_\_

2. Name six uses for llamas.

1. \_\_\_\_\_

4. \_\_\_\_\_

2. \_\_\_\_\_

5. \_\_\_\_\_

3. \_\_\_\_\_

6. \_\_\_\_\_

3. Conformation is the appropriate arrangement of \_\_\_\_\_ for assembly of the whole \_\_\_\_\_.

4. Describe each style.

Heavy Wool	
Medium Wool	
Light Wool	
Suri Llama	
Huacaya Alpaca	
Suri Alpaca	

5. Llamas and alpacas have a \_\_\_\_\_ stomach.

6. What is a baby llama or alpaca called? \_\_\_\_\_

7. How long does a female llama carry the cria (gestation period)? \_\_\_\_\_

8. What are the 3 P's to remember when working with your animal? \_\_\_\_\_

\_\_\_\_\_

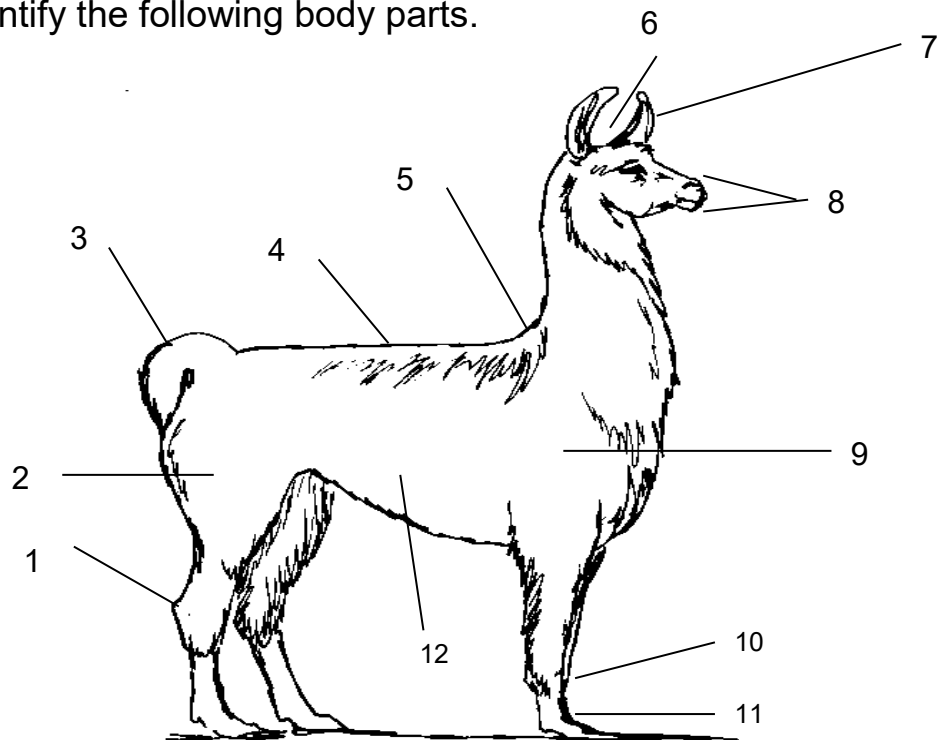
9. Where should the noseband of the halter lay on the llamas' face? \_\_\_\_\_

\_\_\_\_\_

10. What type of knot should you use when tying your animal for a brief time? \_\_\_\_\_

\_\_\_\_\_

11. Identify the following body parts.



1. \_\_\_\_\_

5. \_\_\_\_\_

9. \_\_\_\_\_

2. \_\_\_\_\_

6. \_\_\_\_\_

10. \_\_\_\_\_

3. \_\_\_\_\_

7. \_\_\_\_\_

11. \_\_\_\_\_

4. \_\_\_\_\_

8. \_\_\_\_\_

12. \_\_\_\_\_

**Word Bank:**

Back

Hock

Poll

Stifle

Ears

Muzzle

Ribs

Tail

Fetlock

Pastern

Shoulder

Withers