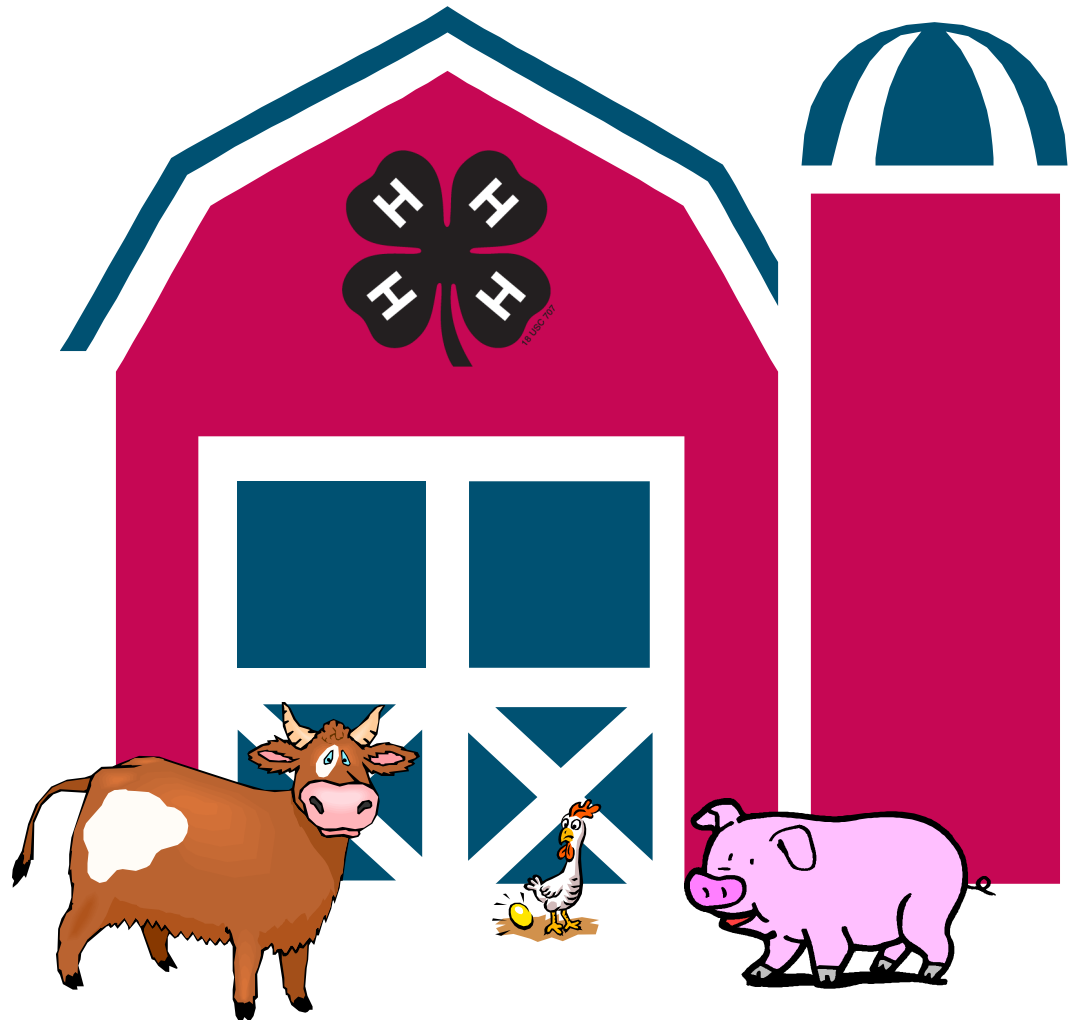


FARM ANIMALS

Mini 4-H



Draft Developed by:
Purdue University Cooperative Extension Service
Area 7 4-H Youth Development Educators from
Blackford, Delaware, Fayette, Franklin, Henry, Jay,
Madison, Randolph, Rush, Union, & Wayne counties

Indiana Academic Standards

Indiana Academic Standards in this manual:

Grade One

- 1.4: Students ask questions about a variety of living things and everyday events that can be answered through observations. They become aware of plant and animal interaction. They consider things and processes that plants and animals need to stay alive.
- 1.4.2: Observe and describe that there can be differences, such as size or markings, among the individuals within one kind of plant or animal group.
- 1.4.3: Observe and explain that animals eat plants or other animals for food.
- 1.4.4: Explain that most living things need water, food, and air.
- 1.6.1: Handwriting: Print legibly and space letters, words, and sentences appropriately.

Grade Two

- 2.2.8: Follow two-step written instructions.
- 2.4.3: Observe and explain that plants and animals both need to take in water, animals need to take in food, and plants need light.
- 2.6.1: Handwriting: Form letters correctly and space words and sentences properly so that writing can be read easily by another person.



Mini 4-H Parent's Page



Welcome to the Mini 4-H Program! Mini 4-H is designed for youth to explore a variety of project areas.

Your child received this project manual when enrolling in Mini 4-H. This manual will provide fun, age-appropriate learning activities throughout their year(s) in Mini 4-H and their interest in this project.

As a Mini 4-H parent, your job will be to guide and encourage your child through the activity. It is highly suggested that you do not complete the activities for them. Instead, help them, guide them, work with them, and let them do all that they possibly can. The 4-H motto is "learn by doing" and is the best educational tool that we can provide for youth.

Additionally, the Mini 4-H program is set up to allow your child to exhibit a project at the 4-H Fair. This project is based upon information within this manual.

The 4-H Fair is an exciting time for 4-H members and families. It is a time that allows community youth to showcase their talents, interests, and enthusiasm for learning.

Mini 4-H is fun! Your child will certainly enjoy it. You can have fun too, by guiding and helping as your child participates in the program. Encourage and praise your child as he/she has fun learning and sharing with you.

If you have any questions regarding Mini 4-H or other 4-H programs, please contact your local Extension Office.

Developed by Area VII Extension Youth Educators
Purdue University Cooperative Extension Service



Mini 4-Her's Page



Welcome to Mini 4-H! You are now a member of the 4-H family. You are a special person.

Mini 4-Hers have lots of fun! There are lots of activities for you to explore. You can try new things. You can share it with your friends and family.

Mom, Dad, or another adult can help you with your project. Bring your project to the 4-H Fair and lots of people will be able to see what you have done. You also get a ribbon made just for Mini 4-Hers.

Things to Know About 4-H

The 4-H Symbol:

A four-leaf clover with an "H" in each leaf.

The 4-H Colors:

Green and white

The 4-H Motto:

To make the best, better.

The 4-H Pledge:

I pledge my HEAD to clearer thinking,
my HEART to greater loyalty,
my HANDS to larger service, and
my HEALTH to better living, for my club,
my community, my country, and my world.





Farm Animals



There are many kinds of farm animals. Farm animals are also called *livestock*. People have farm animals for fun and to grow for food. There are many different kinds of farm animals. Here are some animals that live on farms:

- Beef Cattle
- Dairy Cattle
- Goats
- Chickens
- Rabbits
- Sheep
- Pigs
- Horses

Activity 1 – Name the Farm Animal

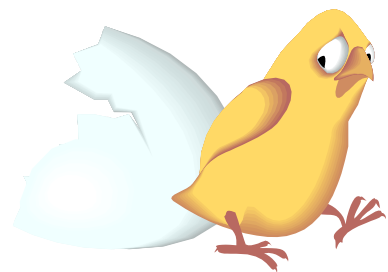
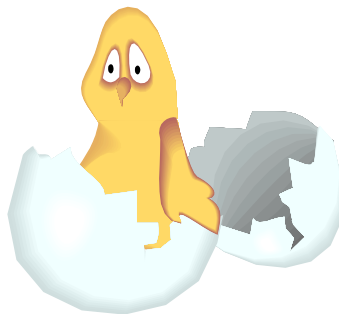
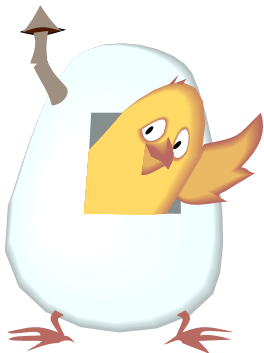
You will need:

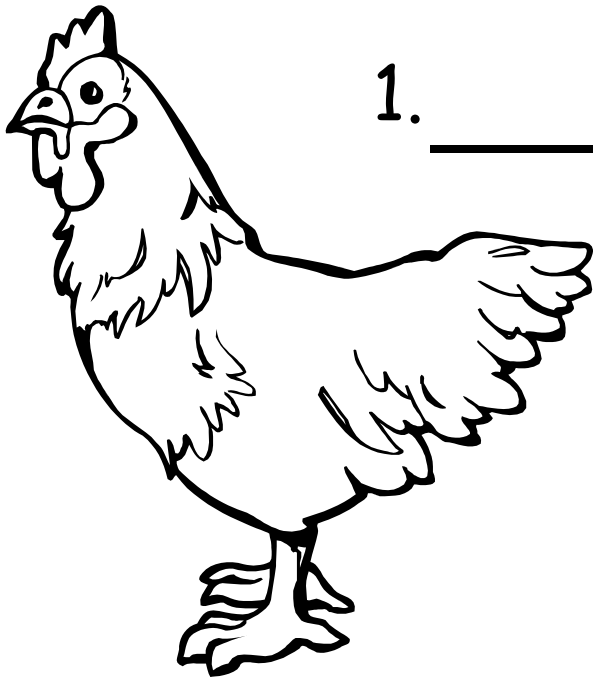
- Pencil
- Crayons, markers, or colored pencils
- The animal pictures on the next two pages



This is what to do:

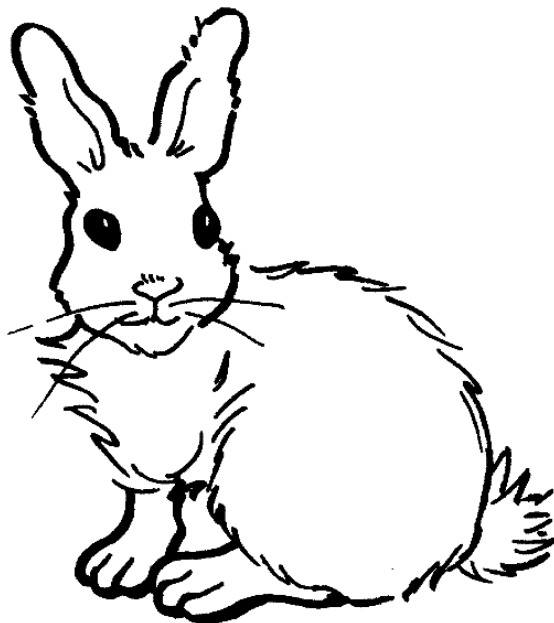
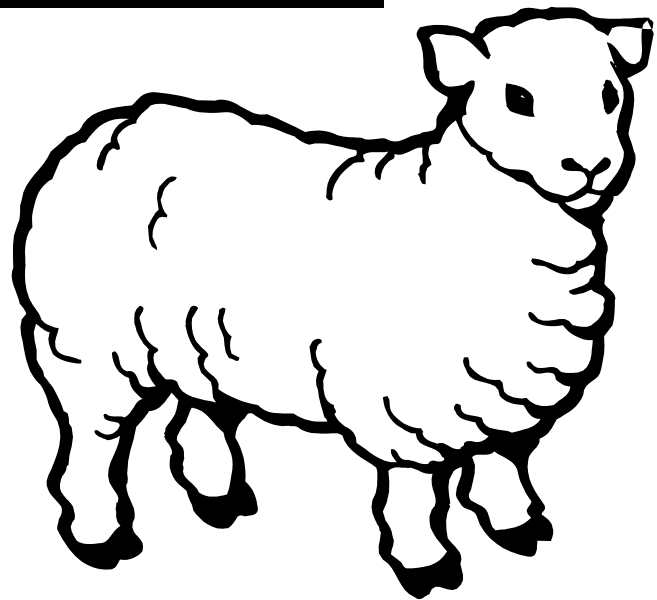
1. Look at the pictures of farm animals on the next four pages.
2. Look at the names of farm animals above.
3. Write the name of the farm animal next to the right picture.
4. Color the pictures.



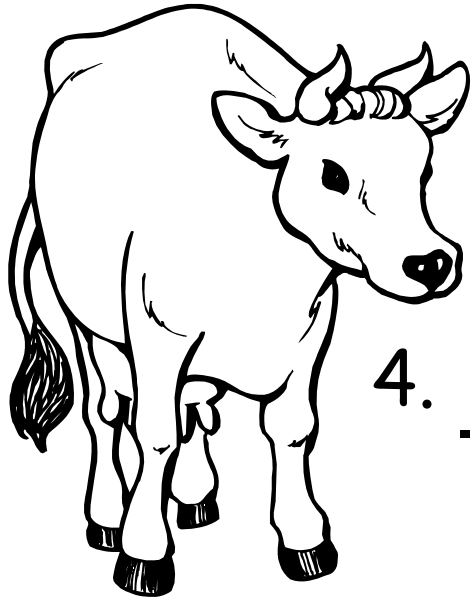


1.

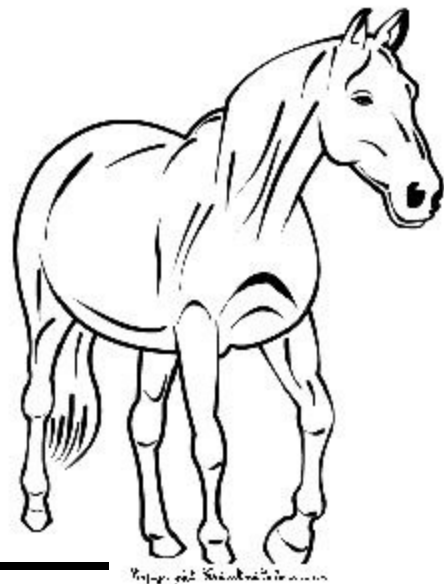
2.



3.

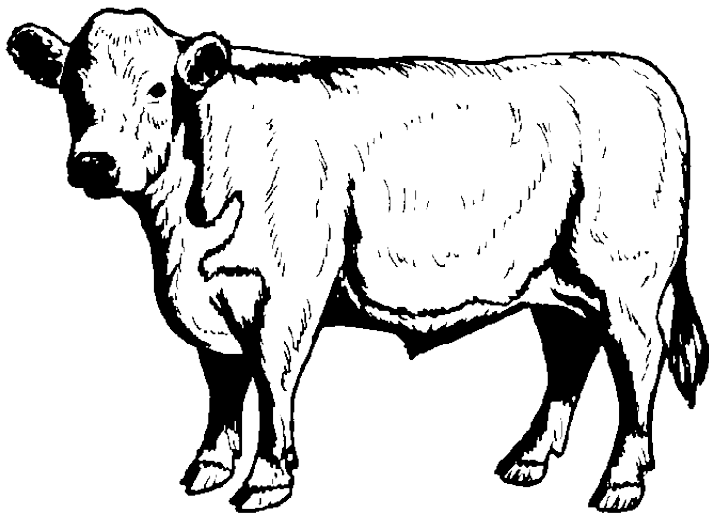


4.

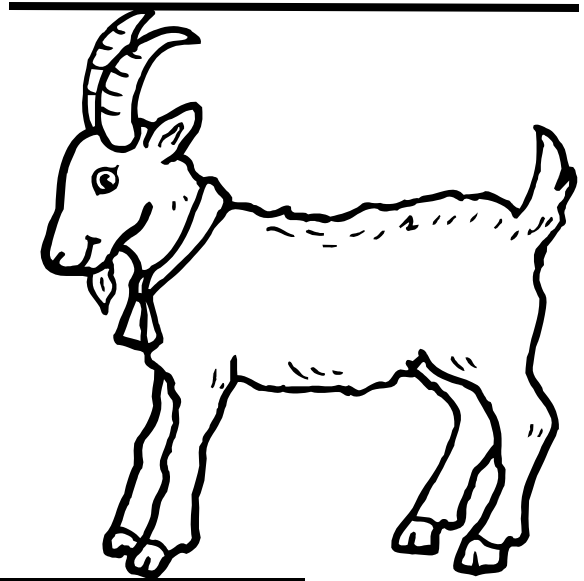
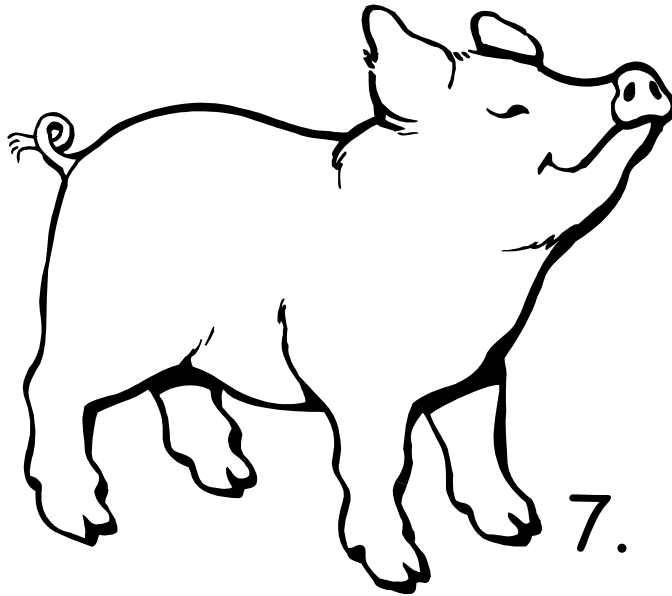


5.

Copyright © Scholastic Teaching Resources



6.



8.

Activity 1 Questions:

1. Could you name all of the farm animals? _____

2. What farm animals do you have at home? _____

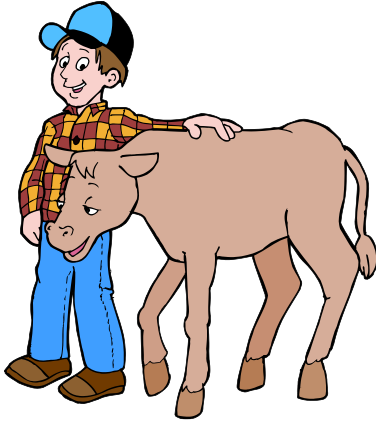
3. What kind of farm animals do you think might be fun to have?



Down on the Farm



Farms are very important. Farmers grow crops, like corn and wheat, that we eat and use to make bread and other food. They also raise farm animals for meat, eggs, milk and other products.



Farms come in many sizes. Some are very small and are called *hobby farms*. Hobby farms do not have many animals. People who own hobby farms work somewhere else. They raise animals for fun! Other farms are very large and are a business.



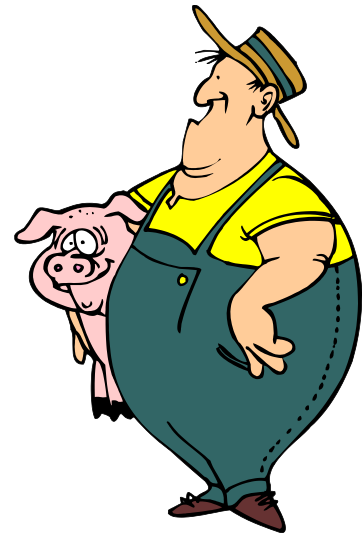
Activity 2 — Make Your Own Farm

You will need:

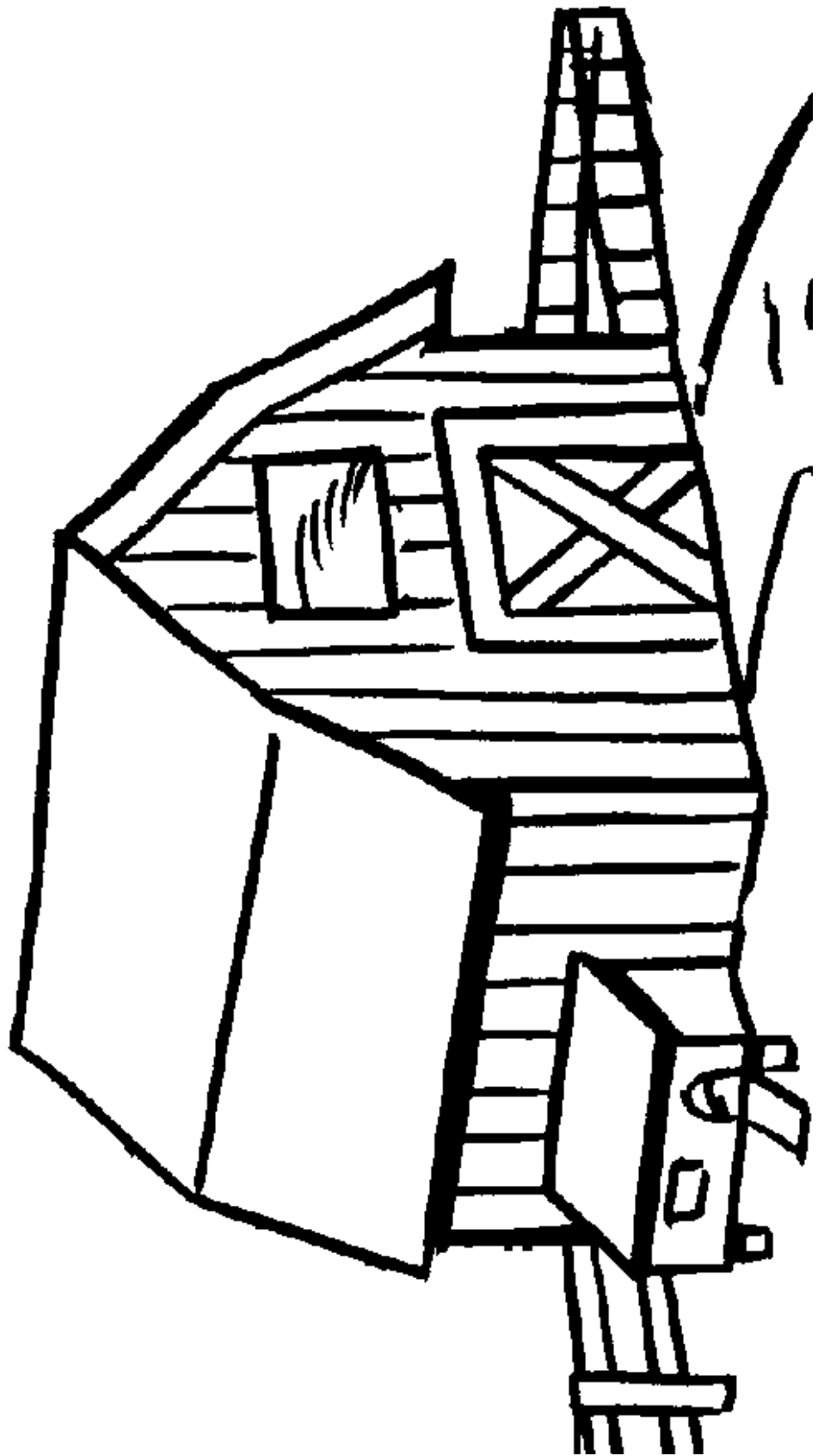
- Pencil
- Crayons, markers, or colored pencils
- The farm picture on the next page

This is what to do:

1. Think about how your farm would look. What kinds of animals would you raise?
2. Look at the animals in Activity 1 if you need help.
3. Draw your animals on the next page. There is a farm picture. Where would your animals like to spend the day?
4. Add more things to your farm. You can add grass, tractors, buildings and people. This is your farm — have fun!



My Farm



Activity 2 Questions:

1. Where do animals live on farms? _____

2. What farm animals did you draw on your farm? _____

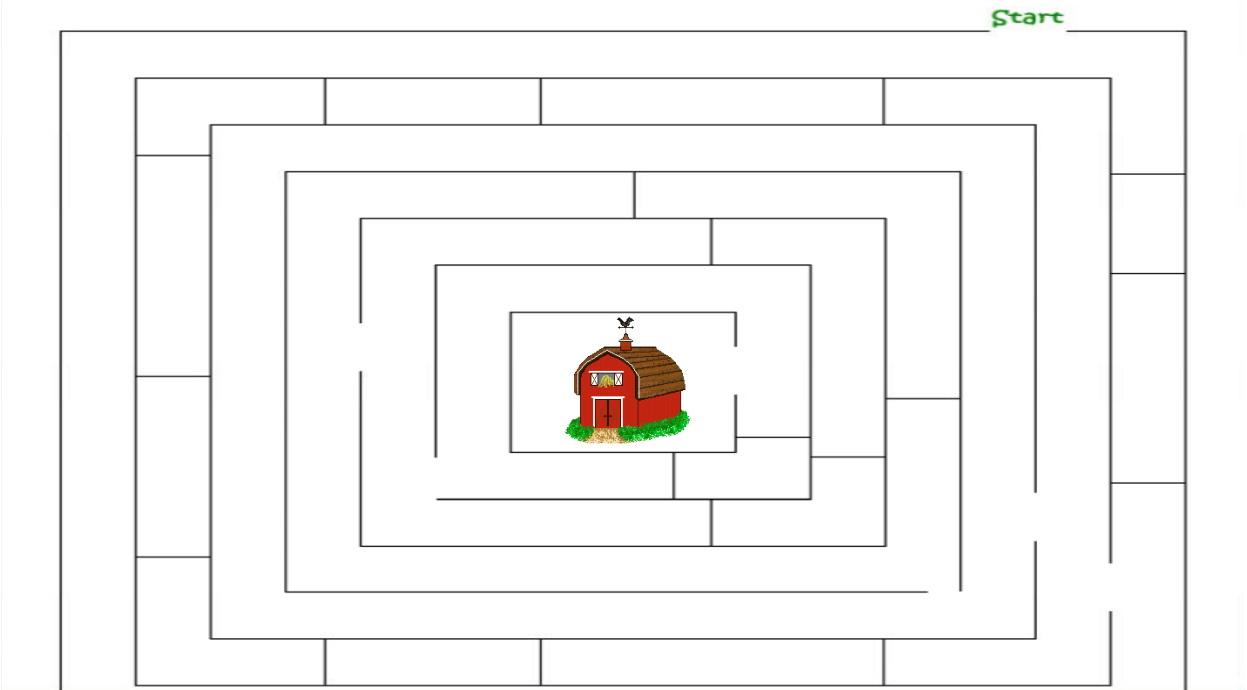
3. What other things did you draw for your animals? _____

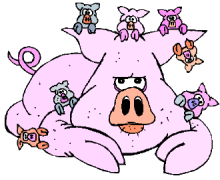
Amazing Farms

Help the dairy cows find their way from the pasture to the barn to be milked.

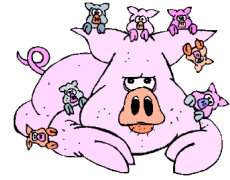


Start



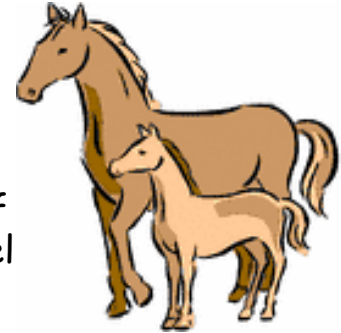


BIG & small



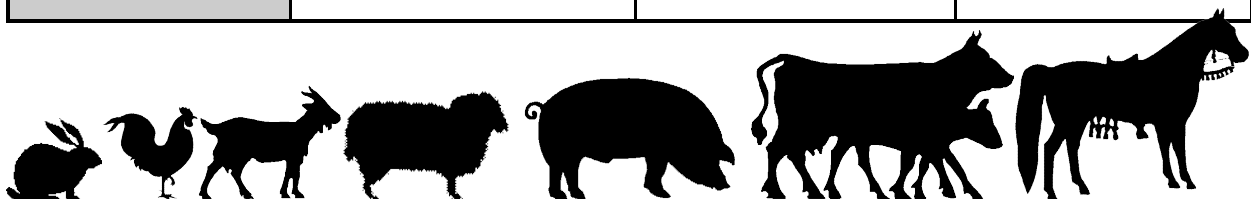
Farm animals come in all sizes. The rabbits are small and cows are very large. Each kind of animal also comes in different sizes and colors. A grown cow is bigger than a calf. Just like you, farm animals get bigger when they grow up.

For people, we call grown-ups *adults*. A very small child is a *baby*. You are called a *child*, which is bigger than a baby. *Teenagers* are even bigger. There are also boys and girls.



Farm animals also have different names for sizes of animals and for boys and girls. Here is a chart to help you.

Animal Name	Adult Male	Adult Female	Young Animal
Beef & Dairy Cattle	Bull or Steer	Cow or Heifer	Calf
Chickens	Rooster	Hen	Chick
Rabbit	Buck	Doe	Kit
Goat	Ram or Wether	Doe	Kid
Sheep	Ram or Wether	Ewe	Lamb
Swine (pigs)	Boar or Barrow	Gilt or Sow	Piglet
Horse	Stallion or Gelding	Mare	Foal (female) Colt (male)



Activity 3 — Match Up

You will need:

- Pencil
- Crayons, markers, or colored pencils



This is what to do:

1. Look at the pictures of farm animals on the next page.
2. Draw a line to match the adult animal to the baby animal.
3. Color the pictures.
4. Answer the questions.

Activity 3 Questions:

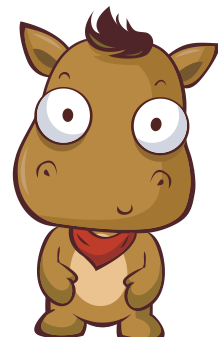
1. Did you know that there were so many different names for the same animals? _____
2. Which farm animal do you think changes the most as it grows?

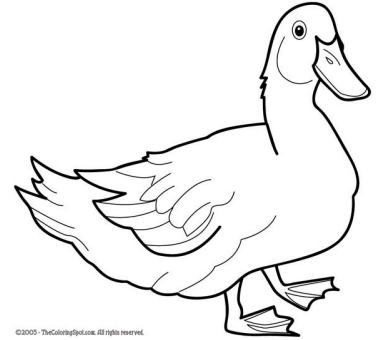
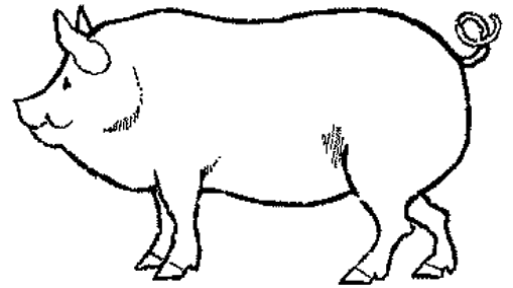
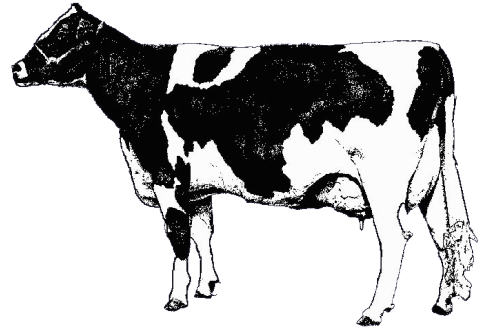
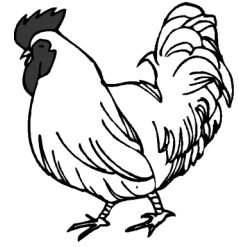
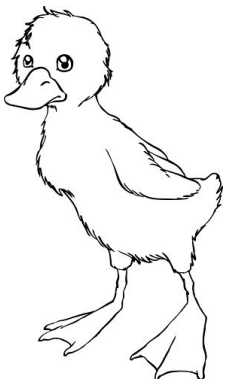
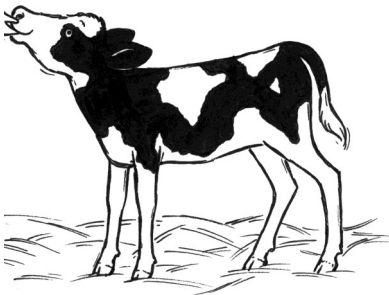
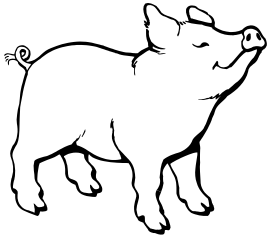
3. What do some baby farm animals eat that grown animals do not?

Joke Time!

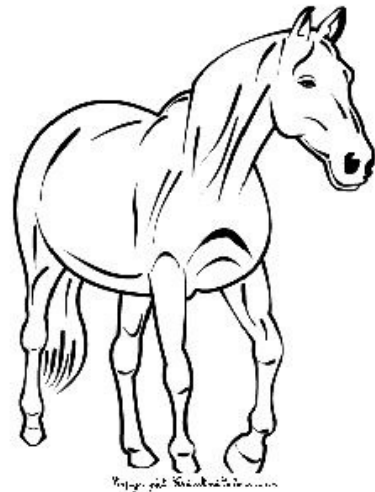
Q: Why did the foal cough?

A: Because he was a little horse!





©2005 - TheColoringPage.com. All rights reserved.

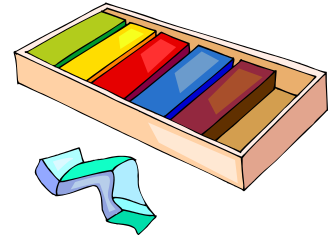


Page 14 of 20

Activity 4-Farm Model

You will need:

- Modeling clay
- Paper, plants, rocks, sticks — things to make your farm animal's home
- Shoebox



This is what to do:

1. Use modeling clay to make a model of a farm animal. You can pick your favorite animal.
2. Check the internet or the library for information. Have an adult help you.
3. Using things from around the house, make a farm model where your animal might live. Use a shoebox for your farm.
4. Add your animal to the farm model.
5. Having fun? Make more animals from your clay. Add them to the farm model too!



Activity 4 Questions:

1. What animals did you make for your model? _____

2. What other things did you use in your model? _____

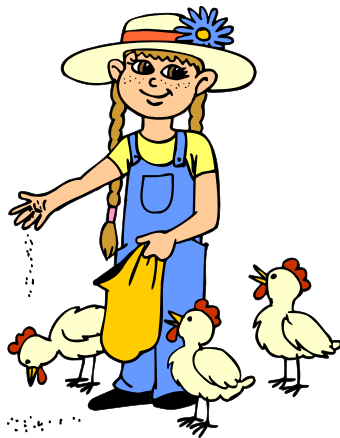
3. Where did you find information for your model? _____



Farm Food



When you are hungry, you go to the kitchen to eat. Plants make their food from light. Animals also look for food when they are hungry. Some animals get their food from the ground if they live outside. Some get their food from a farmer who feeds them in a barn.



Farm animals eat a lot of food. Chickens and pigs like corn, cows like hay, and horses like oats and hay. Most feed is grown by farmers. Some people buy their feed and grain at local *feed stores*. Grain is a kind of feed (corn is a grain). Don't forget — just like you, animals get thirsty, too! They need to drink plenty of water everyday to stay healthy.

Activity 5 — Let's Eat!

You will need:

- Pencil
- Crayons, markers, or colored pencils

This is what to do:

1. Unscramble the words on the next page.
2. Draw a line to match the word to the correct picture.
3. Color the pictures.
4. Answer the questions.



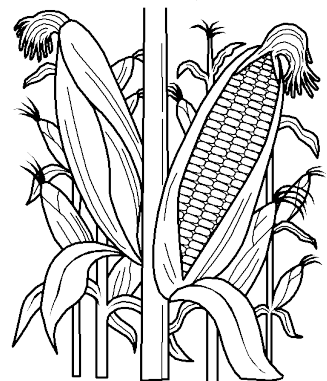
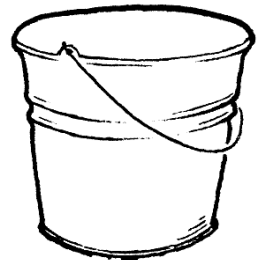
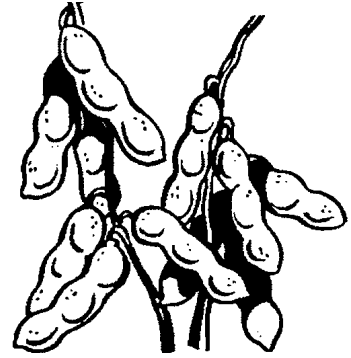
tosa

yha

nocr

syeobnsa

aerwt



Activity 5 Questions:

1. What is your favorite food? _____

2. Do you eat any of the same things that the animals eat? _____

3. What is one thing that all plants and animals need to stay healthy?

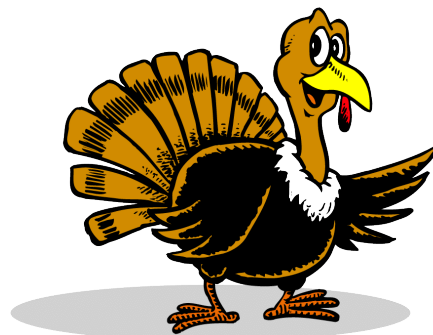
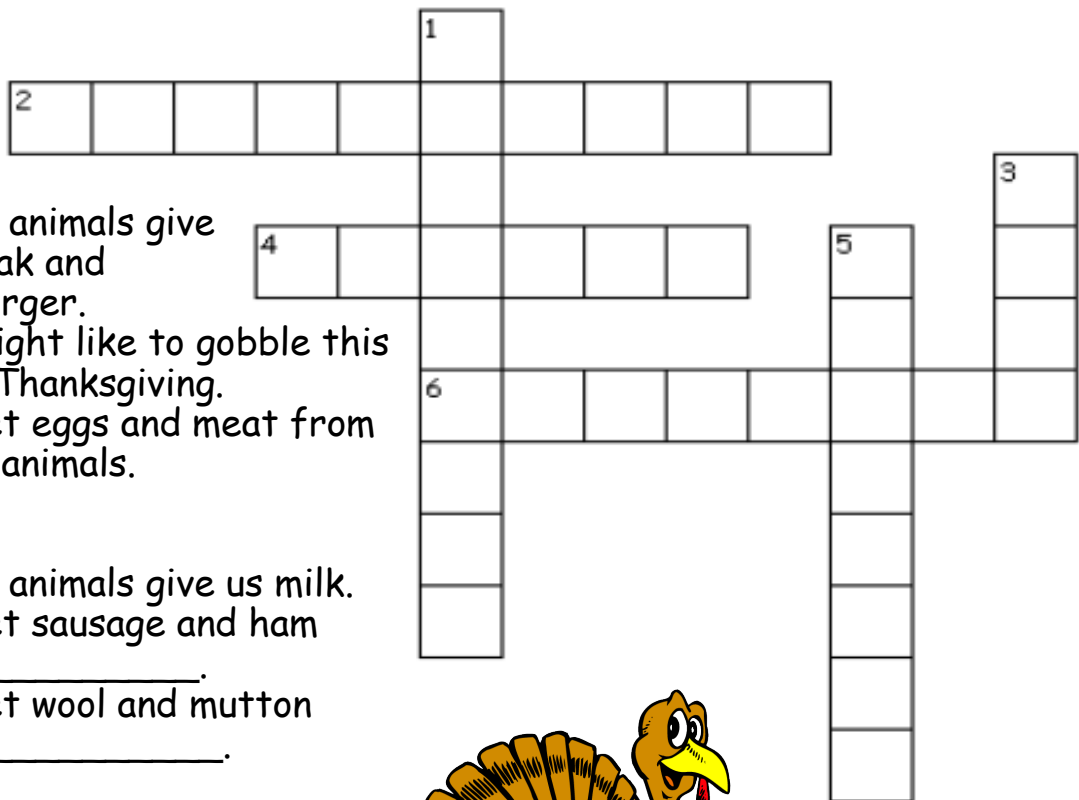
Farm Animals Puzzle

ACROSS

2. These animals give us steak and hamburger.
4. You might like to gobble this up on Thanksgiving.
6. We get eggs and meat from these animals.

DOWN

1. These animals give us milk.
3. We get sausage and ham from _____.
5. We get wool and mutton from _____.





More Than Meat



Farm animals are very important to us. Not only do they help feed us, but they also give us a lot of other things. Do you have a belt? Sometimes belts are made of leather. Leather comes from cows or pigs. Do you have a warm sweater? Many sweaters are made from wool. Wool comes from sheep, goats or llamas.



Everywhere we look, there are things that farm animals give us. What can you find around your house?

Activity 5 – Wool & More!

You will need:

- Pencil
- Chart on the next page



Here is what to do:

1. Look around your house for things made from farm animals. Start in the kitchen (in the refrigerator) to get going.
2. Then check out all the different rooms.
3. Write down the things you find under the farm animal you think it comes from.
4. If you need help, ask an adult or an older 4-H member for ideas. We have helped you with two.



What comes from farm animals?

	Beef	Dairy	Goats	Rabbits	Poultry	Sheep	Swine
1.			Cheese		Eggs		
2.							
3.							
4.							
5.							
6.							
7.							
8.							
9.							
10.							



4-H Fair Exhibit

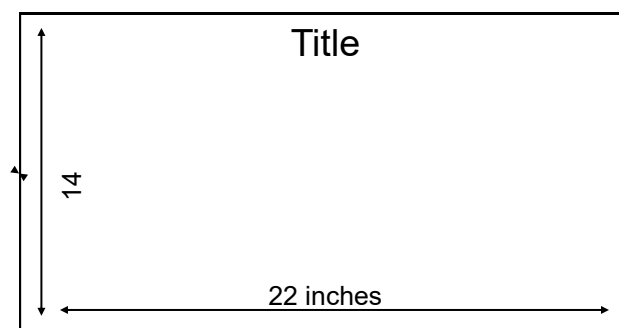


Here is a list of projects that can be shown at the 4-H Fair. Pick one project you would like to try. You do not have to make them in any order. If you have any questions, call the Extension Office. There are people there who can help you.

- Make a poster showing the different things that we get from farm animals. (Examples: hamburgers, wool, eggs, etc.)
- Make a poster showing the different kinds of farm animals. You can use the pictures from Activity 1 or use other pictures that you find.
- Write a story about your favorite farm animal.
- Make a model of your favorite farm animal. If you want, add it to the farm scene you made in the shoebox (see Activity 4).
- Make a poster of your favorite farm animal and identify 5 parts of the animal.
- Talk to a farmer. Ask him or her questions about working on a farm. What animals does he/she raise, and what do they feed their animals? Write a story about the farmer.
- Write or rewrite your favorite fairy tale using farm animals. (For example: Cinderella on the Farm)
- Make a poster of your favorite farm animal and identify 10 parts of the animal. Use a different animal than you did last year.
- Anything else you can think of. Be creative!

For information on how to label your project, when to enter it in the Fair, and where the project needs to go, please contact your County Extension Office.

Good Luck!



Sample poster

Compiled by

Angie Riffle, CED, Extension Educator, 4-H Youth Development, Franklin County

Reviewed and Edited by Area 7 Extension Educators

Rae Ann O'Neill, CED, 4-H/Youth Development, Blackford County
Rich Chalupa, 4-H/Youth Development, Delaware County
Jane Richard, 4-H/Youth Development, Delaware County
Bethany Ratts, 4-H/Youth Development, Henry County
Jonathan Ferris, CED, ANR, 4-H/Youth Development, Fayette County
Cindy Hartman, CFS, 4-H Youth Development, Fayette County
Cara Kobza, 4-H Youth Development, Jay County
Gary Simmons, 4-H/Youth Development, Madison County
Beth Leonhard, 4-H/Youth Development, Madison County
Laura Mickler, CFS, 4-H/Youth Development, Randolph County
Dan Kirtley, CED, ANR, 4-H/Youth Development, Randolph County
Kristie Amos, CED, 4-H/Youth Development, Rush County
Jennifer Logue, CED, ANR, 4-H/Youth Development, Union County
Debra Searcy, CED, 4-H/Youth Development, Wayne County

Sources

thecoloringspot.com

JANUARY 1998
REVISED, NOVEMBER 1998
REVISED, APRIL 2009

PURDUE AGRICULTURE

It is the policy of the Purdue University Cooperative Extension Service that all persons have equal opportunity and access to its educational programs, services, activities, and facilities without regard to race, religion, color, sex, age, national origin or ancestry, marital status, parental status, sexual orientation, disability or status as a veteran. Purdue University is an Affirmative Action institution. This material may be available in alternative formats.

PURDUE
UNIVERSITY

Purdue Extension
Knowledge to Go
1-888-EXT-INFO

Order or download materials at the *Purdue Extension Education Store* • www.extension.purdue.edu/new

Mini 4-H Record Sheet

Name: _____ Grade: _____

Club: _____ Year: _____

Project: _____

Please answer the following questions about your project:

1. What activities did you do to complete you project?

2. What did you learn while working on this project?

3. Do you plan to do a project like this next year in 4-H?

I have checked this record sheet and found it neat and complete.

Parent/Guardian, Leader, or Helper's Signature

Date

Please bring this record sheet with your project when you check in at 4-H Fair