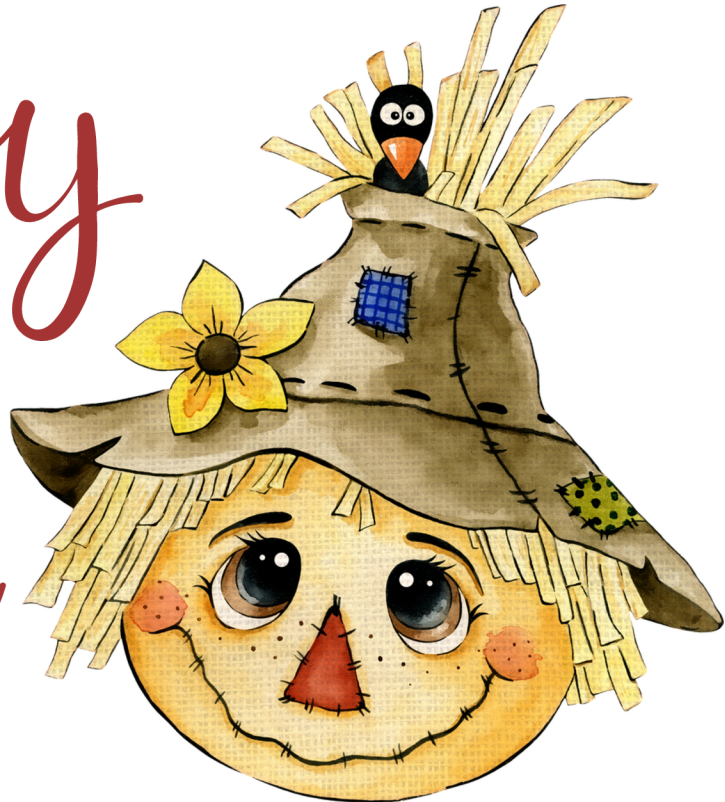


happy fall



PURDUE EXTENSION - LAPORTE COUNTY OFFICE STAFF

Chrissie Lai
Extension Educator
Health & Human
Sciences
lai241@purdue.edu

Sue Salisbury
ANR & HHS Secretary
salisbk@purdue.edu

Kelsey Guadarrama
County Extension
Director
4-H Extension Educator
ksajdera@purdue.edu

Lauren Allison, 4H Extension Educator
Jessi Davenport, ANR Educator
Zoie Martinez, 4-H Youth Administrative Assistant
Kathy Ulman, Office Manager
Megan Sholey, Marketing & Communications

Office Hours & Contact

Monday- Friday 8am-4pm | (219) 324-9407 | extension.purdue.edu/county/laporte

It is the policy of the Purdue University Cooperative Extension Service that all persons have equal opportunity and access to its educational programs, services, activities, and facilities without regard to race, religion, color, sex, age, national origin or ancestry, marital status, parental status, sexual orientation, disability or status as a veteran. Purdue University is an Affirmative Action institution. This material may be available in alternative formats.