

The Latest Dirt

La Porte County Master Gardener Newsletter



JUNE 2023

INSIDE THIS ISSUE

ASSOCIATION NEWS	2
EXTENSION NEWS	3
VOLUNTEER OPPORTUNITIES	4
EDUCATION	6
ANNOUNCEMENTS	7
JUNE GARDEN CALENDAR	9

2023 MEETING SCHEDULE

Meetings will be held at 6:00 p.m. (DST) on Thursday at Bethany Lutheran Church
102 G Street, La Porte, IN

June 1	Field Trip Sunset Hill Farm County Park
July 6	Business Meeting
August 3	Workshop
September 7	Business Meeting
October 5	Workshop
November 2	Business Meeting Elections
December	Holiday Party

NEXT BOARD MEETING

June 20th - 6:30 p.m.
La Porte Co. Library Exchange, Mtg. Rm. B
Members are welcome to attend

"THE LATEST DIRT" is published monthly.
The next deadline is June 20, 2023



www.facebook.com/MasterGardenersOfLaPorteCountyIndiana
www.lpmastergardener.org



PURDUE EXTENSION
MASTER GARDENER PROGRAM

Extension Office Beautification

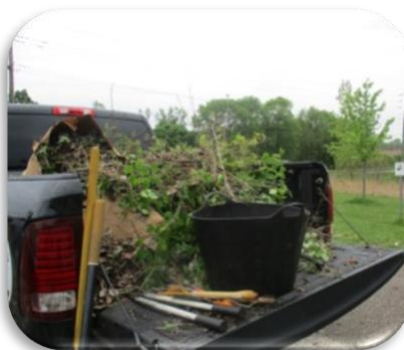
By: Donna Pouzar

On May 12th, Connie Shei, Kathleen Fox, Deb Sarver, Cindy Pagels and I along with Paul Vicari, Soil Conservationist with La Porte County Soil and Water spent the morning cleaning out the front gardens at the Extension Office.



Cindy Pagels and Donna Pouzar

It's quite a daunting task since those gardens have not been worked on for a couple of years. We made some good progress, but more work definitely is needed. A second workday was scheduled for Friday, May 19, weather permitting.



Deb Sarver, Paul Vicari and Kathleen Fox

The Habitat holding garden also needs to be cleaned up. This garden, in the back of the building, contains plants that have been donated by members to be planted at new Habitat home projects. This project needs to be discussed at a meeting to see if members are willing to help clean out this garden on an on-going basis.

ASSOCIATION NEWS

June Field Trip – Sunset Hill Farm County Park

By: George and Karen Sarver

The June 1st, 6:00 p.m. meeting will be a field trip to **Sunset Hill Farm County Park** at 775 Meridian Rd. in Valparaiso. The **Illiana Garden Railway Society (IGRS)** has established a layout that combines the hobbies of gardening and model railroading. We will explain garden railroading and demonstrate the types of gardening and unique maintenance required to provide a fun and pleasing venue to enjoy.

Come on out and learn how you can enjoy this type of gardening in your own yard. We will be outdoors but, in case of rain, we will meet in the program center and have a little different presentation. Some picnic tables are at the site, but it might be a good idea to bring a lawn chair.

Have a spouse or child/grandchild interested in trains but not gardening? Bring them along. This dual hobby allows for family enjoyment and trains will be running that evening. The park also offers hiking trails, playground and ponds to enjoy.

Any questions, email or call George at: sarver@csinet.net, 219-476-5760.

Directions: Location is easy to access !! Sunset Hill Farm is at corner of Rt. 6 & Meridian Rd.

1. Find your way to Rt. 6 then head west to about 1 ½ miles west of Rt. 49 – Meridian Rd.
2. Turn South on Meridian to entrance of Sunset Hill Farm County Park on the left.
3. Follow entry road, veering right at the Y and continue around some trees, past a parking lot, two buildings and a pond.
4. The layout is on the left after the pond.
5. Parking is available at the layout – or park in the parking lot and walk down.

Grants Awarded

By: Carol Nolan

Three (3) grants were awarded at the Board Meeting on Tuesday, May 16, 2023. Those receiving Grants are:

- Michigan City Salvation Army for teaching people how to container garden.
- Friendship Botanic Gardens for their project to protect the tasting garden which teaches children about the five (5) senses in gardening.
- La Porte County Soil and Water Conservation for the Power Pollinator Garden they will be creating at the extension office.

All the awarded organizations outlined in great detail the educational aspect of their projects. The grantees have not yet been notified, and will be over the next week. Each recipient will be given an opportunity at our October business meeting to share their plans and show pictures and posters of their successes.

I will supply more detailed information for each recipient for the next newsletter.

2023 EXECUTIVE BOARD

PRESIDENT	CAROL NOLAN
VICE PRESIDENT	KATHLEEN FOX
CO-SECRETARIES	ANN KLOSINSKI
	STEVE ZOLVINSKI
TREASURER	SUSAN KIEFFER
ED. COMMITTEE/ SPEAKERS BUREAU	EUNICE CONWAY
	JOAN KINTZELE
	DEB SARVER
PAST PRESIDENT	RANDA MAGILL

2023 PROJECT COORDINATORS

Brown Bag Gardening Series

OPEN _____

Farmers' Market – La Porte

Carol Nolan _____ 331-903-0091
_____ cnolan41@yahoo.com

Garden Hotline

Extension Office _____ 219-324-9407

Habitat for Humanity

_____ **OPEN**

Friendship Botanic Gardens

Rima Binder _____ 219-878-8128
_____ rimabinder@comcast.net

Pioneer Land School Tours

Linda Hough _____ 219-324-0424
_____ ljhough614@gmail.com

Pioneer Heritage Garden

Connie Shei _____ 219-362-4866
_____ jshei@comcast.net

Seed Savers

Mary Davis _____ 219-877-5339
_____ mdavis9757@gmail.com

Sunflower Fair

_____ **OPEN**

Garden Show

Carol Nolan _____ (331) 903-0091
_____ cnolan41@yahoo.com

EXTENSION NEWS

***Purdue Extension Porter/La Porte County
Master Gardener Training Program***

Purdue Extension is now accepting applications for the Fall Purdue Extension Master Gardener's Training Program.

If gardening is your passion, then the Purdue Extension Master Gardener program may be something you would enjoy.

The classes will be held on Wednesdays starting on August 30, 2023 and ending on December 6, 2023. The class will be held in the afternoon from 1 pm to 4 pm central time. The location is the Purdue Northwest Campus in Westville, IN. The cost for the class is \$200. Applications are due August 1, 2023.

The class will cover core topics such as: weed identification and control, plant science, soils and plant nutrition, plant diseases and diagnosis, woody ornamentals, herbaceous ornamentals, insect's identification and control, vegetable and fruit gardening, pesticides safety and alternatives, lawn care, animal pests and invasive species.

All gardeners are welcome. The number of participants is limited and on a first come, first served basis. By successfully completing the Purdue Extension Master Gardener Training Program, you have an opportunity to join your local Master Gardener Association. This association is a community of volunteers who work to help others grow better gardens.

For further details call the Purdue Extension Office at 219-465-3555 or email brow2274@purdue.edu.

PURDUE EXTENSION - PORTER COUNTY
155 Indiana Avenue, Ste #301
Valparaiso, IN 46383

Office: 219-465-3555 Purdue University is an Affirmative Action / Equal Opportunity Institution

VOLUNTEER OPPORTUNITIES

New volunteer opportunities have been added to the Extension Master Gardener site.

By: Kathy Ulman

Hotline – April thru September

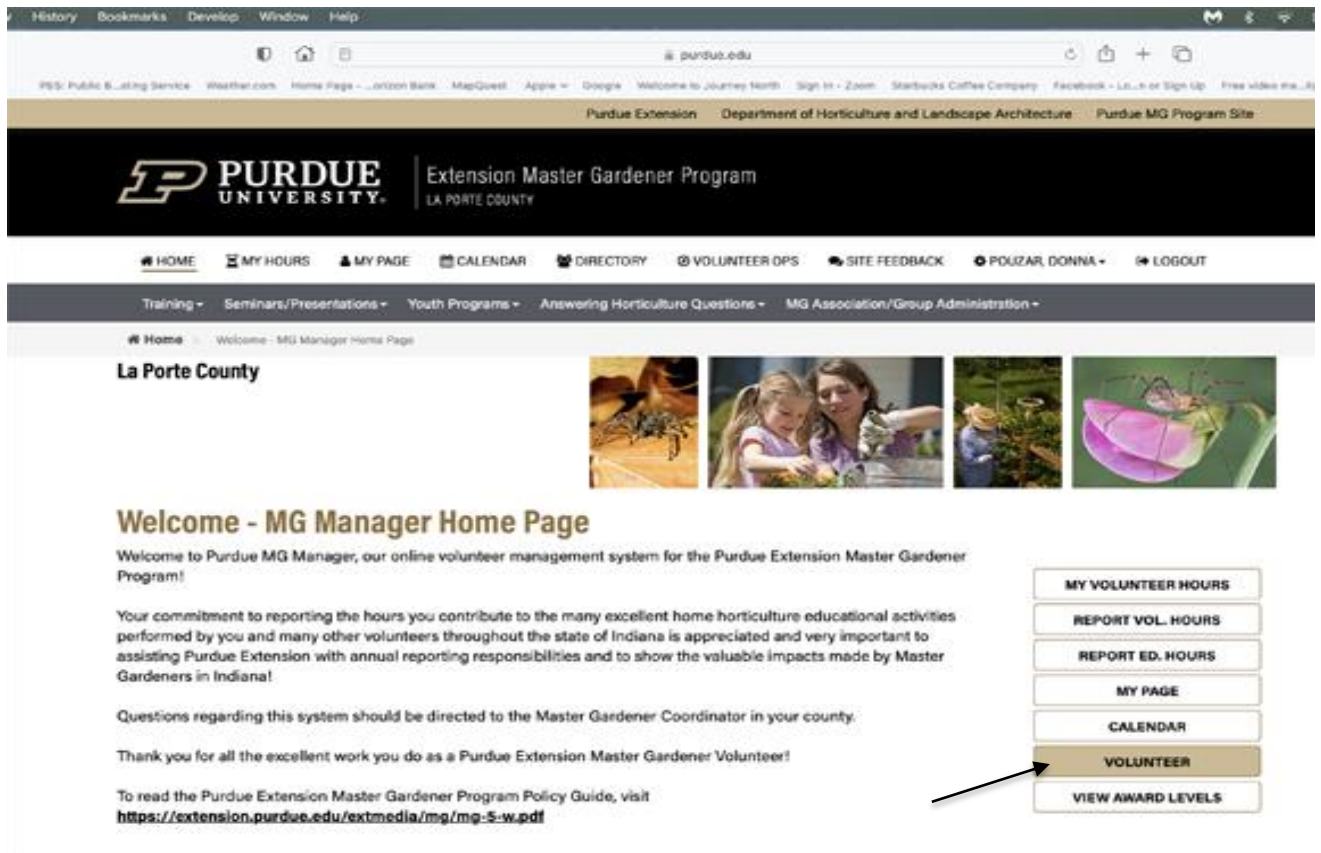
Pioneer Garden School Tours 9:30 – 10:15 a.m.

May 22 – May 26

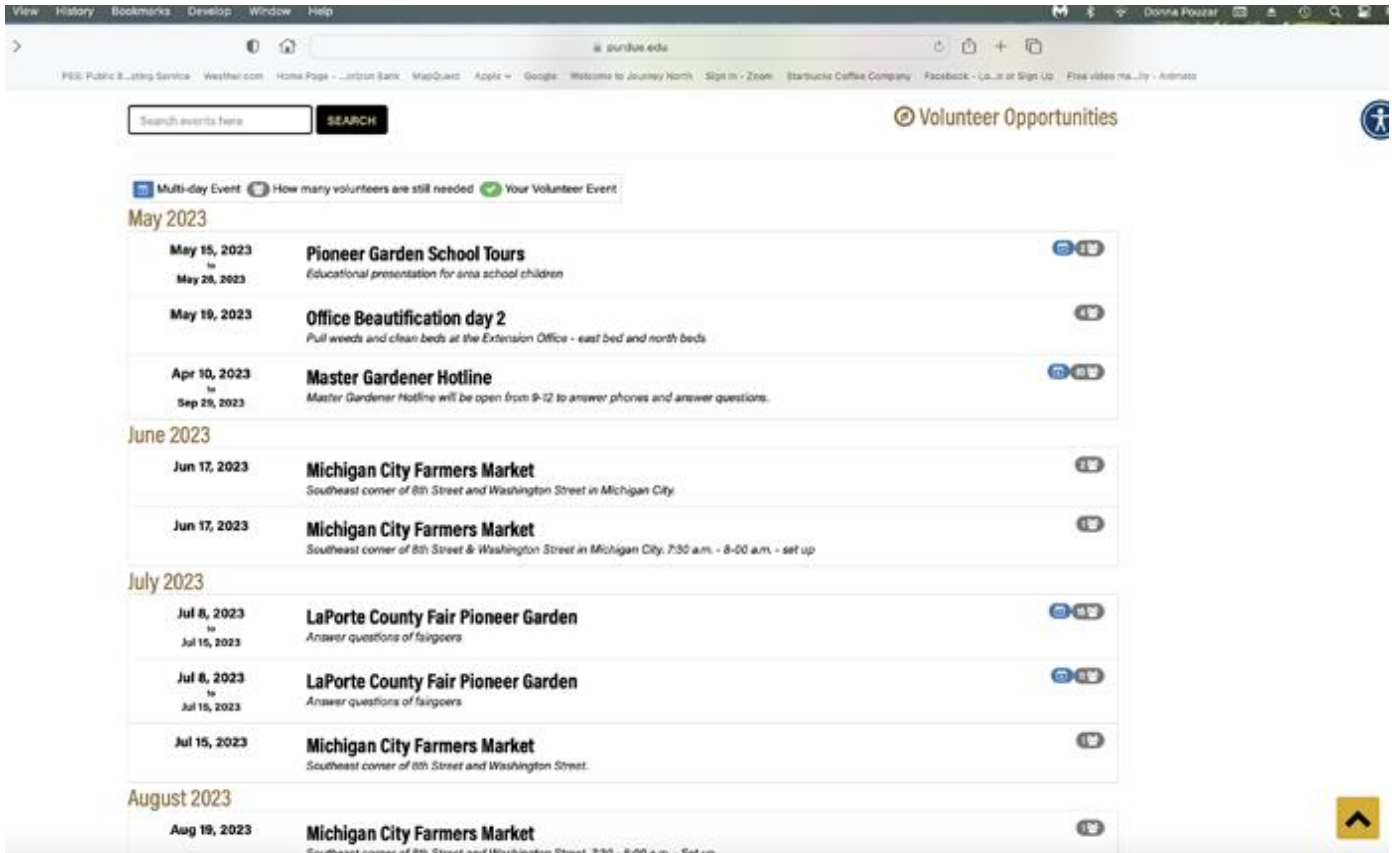
La Porte County Fair Pioneer Garden - 12:00 -3:00 p.m.; 3:00-6:00 p.m.

July 8 – July 15

In the event you are having problems locating the Volunteer Opportunities option on MG Manager, below are some instructions on how to access this. After you log on to MG Manager, the next screen you will see offers several options. What you want to do is select “Volunteer” as shown below:



After you click on 'Volunteer,' the next screen will appear:



At this point, you can click on any of the volunteer opportunities to sign up and you will see who else has volunteered for that particular event. If you have questions, please contact Kathy Ulman at the office and she will be happy to help you.

HOT LINE

By: Carol Nolan

I will be manning the **Hot Line** on Mondays beginning June 12. If any member needs extra training and feels more comfortable volunteering with an experienced MG, please sign up for the following available Mondays. You can do so by logging into MG Manager or by calling the Extension Office and asking Kathy Ulman to reserve the day/days you prefer.

June 12, and 26
 July 3, 10, 17, 24, and 31
 August 7, 14, 21, and 28
 September 11, 18, and 25

Farmers' Market – Michigan City

By: Carol Nolan

Also, the Michigan City **Farmers Market** is now on the MG Manager calendar. I have signed up for each week for the 7:30 to 10 slot to set up. I will be back around noon each session to assist with tear down as well. If you want to sign up, below are the dates we are scheduled to be there:

June 17
July 15
August 19
September 16
October 21

Each volunteer can sign up for a minimum of 2 hours or the full 4 hours, your choice. Starting time is 8 a.m. and closing is 12 p.m. I will bring the canopy, weights, table, and chairs. Those who sign up for 8:00 a.m. slots should be there around 7:30 to help set up. If you have any questions, please feel free to contact me.

EDUCATION

When, What and Why Do I Prune

By: Donna Pouzar

A frequently asked question by gardeners is when, what and why do I prune. On May 20, Steve Bornell, former Horticultural Director of Fernwood Botanic Garden and a graduate of Purdue University, answered these questions.

Jackie Carroll, Rima Binder and I, along with six other gardeners, walked around the gardens at Friendship Botanic Gardens with Steve who discussed and demonstrated different issues as he pruned some of the trees and shrubs.



He talked about only pruning spring flowering shrubs after they bloom unless those plants sported flowers on new growth. He pointed out the hazards of crossing branches on trees and how these branches can cause damage to the bark thus causing disease. One of the crossing branches should be removed before it become too large. He demonstrated the 3-point cut on larger tree branches which eliminates the possibility of tearing the bark which can damage a tree. He explained how to thin out an overgrown shrub by either pruning out the larger and older stems or even cutting the branches down to about 12-18 inches and letting the shrub send up new healthy stems.



It was a very interesting and educational 2 hours.

La Porte County Master Gardener Association

ANNOUNCEMENTS

Indiana Dunes Native Plant Sale Pre-Orders Suggested



The 2023 Native Plant Sale is back. Pre-sale ordering is highly suggested and **WILL TAKE PLACE on Saturday, June 3rd from 9:00 a.m. – 1:00 p.m.** Order Forms are available for printing at the Friends' website (dunefriends.org) or from a link on our Facebook page. Paper copies of the 26th Annual Native Plant Sale Order Form are available at the State Park Office and Nature Center as well as at the Indiana Dunes National Park and Indiana Dunes Tourism Visitor Center. Have questions or need assistance, please contact the Friends' Chair, Angel Gochee-Goins, by calling **219-707-3617** or emailing nativeplants@dunefriends.org

There is a limited quantity of each plant variety available from our supplier and plant orders are filled in the sequence in which they are received. Please submit your Order Form as early as possible. Orders must be paid in full when submitted.

Orders will be ready for curbside pick-up on Saturday, June 2nd, or 3rd. Pick-up of your Native Plant Sale Order will be at the **Friends' Office** located on the northwest corner of **Mineral Springs and Oak Hill Roads in Porter, Indiana** (GPS coordinates 41.629814 – 87.087099). Refunds will be made for plants not available due to crop failure or sell out.

The sale will be held at the Friends' Office located at **1000 W. Oak Hill Road in Porter, IN** (northwest corner of Mineral Springs and Oak Hill Roads. The 26th Annual Native Plant Sale consists of more than 80 plant species, including large selections of woodland flowering plants and ferns; dry, medium, and wet prairie flowering plants; as well as grasses, shrubs, and trees. All varieties come in pots and most species are native to Lake, Porter and La Porte counties.

STANDING COMMITTEE

COORDINATORS

History Book _____ Donna Pouzar
Hospitality _____ Eunice Conway
Librarian _____ Linda Hough
Newsletter _____ Donna Pouzar
Speakers Bureau See Executive Board
Sunshine _____ Julie Goetz

Purdue Extension Office __ 324-9407

Interim ANR-Porter County
Nikky Witkowski __ 219-465-3555
nikky@purdue.edu

Interim ANR-La Porte County
Mary Komenas __ 219-324-9407
mfoell@purdue.edu

The Latest Dirt is published monthly. The deadline for submission is the 20th of each month. Our mission is to publish articles and events of interest to other Master Gardeners and the community. Articles about personal experiences, suggestions on gardening books, catalogs, helpful websites, tips and tricks, book reviews, seminars you've attended are welcomed.

Submission requirements: Articles should be no longer than a page and can include photos. References must be included. Latin names of plants should be italicized. We do not accept articles pertaining to medicinal information. Master Gardeners will get volunteer hours for time spent working on an article.

**Have a garden item for sale or trade?
Buy, Sell, Trade at the
Trading Shed**

Place your free ad in The Latest Dirt.

Tools, tillers, mowers, plants - anything garden related. Keep ads brief and provide your phone number and/or e-mail address. Ads will be limited to space available.

Send ads, photos, events or articles by the 20th of the month to:

pouzdlp@icloud.com

PURDUE UNIVERSITY IS AN EQUAL
OPPORTUNITY/EQUAL ACCESS/AFFIRMATIVE
ACTION INSTITUTION

POLLINATOR PLANTING GARDEN
Offered by La Porte County Soil and Water Conservation District

Our friends at Soil & Water Conservation District placed a 2nd order for the pollinator kits because the first order was sold out so fast. If you missed the first deadline, here is their second chance! Deadline for this last order is June 8.

Looking to help our pollinators? We have a solution! Our Pollinator Power Garden Kit is now available for purchase on our website here: <https://www.laporteswcd.org/product/pollinator-power-garden/>

At \$125, these kits are an excellent value for your money! Kits are only available on a pre-order basis. **Last day for orders is June 8th.**

<p><i>Pycnanthemum virginianum</i> MOUNTAIN MINT</p> <ul style="list-style-type: none"> • Pollinators: Bees, small butterflies, and beetles • Height: 3 feet • Blooms: Densely flowered, white to light purple blooms show from June to September. • Leaves have a minty fragrance. • Zones 2-7 • Sun: Full to partial 	<p>For more information, or to start your own pollinator planting, contact:</p>	
<p><i>Echinacea purpurea</i> PURPLE CONEFLOWER</p> <ul style="list-style-type: none"> • Pollinators: Much loved by bees, host plant for ottoe skippers • Height: 4 feet • Blooms: Golden-red to purple flowers show from July to September. • Some rebloom in fall. • Zones 4-8 • Sun: Full to partial 	 <p>LaPorte County Soil and Water Conservation District 2857 W. State Road 2, Suite B Phone: 219-326-6808 x 2116</p>	
<p><i>Sporobolus heterolepis</i> PRAIRIE DROPSEED</p> <ul style="list-style-type: none"> • Pollinators: Grasshoppers and leafhoppers • Height: 2 feet • Blooms: Fragrant seed stalks smell of cilantro and bloom August to October. • Zones 3-9 • Sun: Full to partial 	 <p>Porter LaPorte Advancing Natives Team https://www.facebook.com/PLANT.Porter.LaPorte</p>	<p>LAPORTE COUNTY SOIL & WATER CONSERVATION DISTRICT Pollinator Kit</p>
	 <p>Indiana Native Plant Society https://indiananativeplants.org/</p>	

Zizia aurea
GOLDEN ALEXANDERS

- Pollinators: Short-tongued bees, wasps, flies, small butterflies, and beetles, host plant for black swallowtails and Ozark swallowtails
- Height: 3 feet
- Blooms: Yellow clusters show April to June.
- Zones 3-8
- Sun: Full to partial



Penstemon digitalis
FOXGLOVE BEARD TONGUE

- Pollinators: Long-tongued bees, honeybees, bumblebees, miner bees, mason bees, and hummingbirds
- Height: 4 feet
- Blooms: Delicate white flowers appear June to July.
- Zones 4-8
- Sun: Full to partial



Tradescantia ohiensis
OHIO SPIDERWORT

- Pollinators: Bumblebees and other native bees
- Height: 3 feet
- Bloom Color: Blue splashes of color bloom against the green grasses May to July.
- Zones 4-9
- Sun: Full to partial



Symphotrichum laeve
SMOOTH BLUE ASTER

- Pollinators: Bees, wasps, butterflies, skippers, host plant for silvery checkerspot and pearl crescent butterflies
- Height: 4 feet
- Blooms: Small blue flowers show August to October.
- Zones 3-9
- Sun: Full to partial



Coreopsis lanceolata
LANCE-LEAF COREOPSIS

- Pollinators: Bees, wasps, butterflies, skippers, day-flying moths, and beetles
- Height: 2 feet
- Blooms: Yellow flowers show May to August.
- Zones 3-9
- Sun: Full



Schizachyrium scoparium
LITTLE BLUESTEM

- Excellent for wildlife!
- Pollinators: Bumblebees, skippers, grasshoppers, prairie walkingsticks, and beetles, host for several species of skippers
- Height: 3 feet
- Blooms: July to October.
- Zones 3-9
- Sun: Full to partial



Liatris aspera
BUTTON BLAZING STAR

- Pollinators: Honeybees, skippers, bumblebees, other native bees, painted ladies, black swallowtails, sulfur butterflies
- Height: 3 feet
- Blooms: Purple spikes of flowers show July to October.
- Zones 3-8
- Sun: Full to partial



Monarda fistulosa
WILD BERGAMOT

- Pollinators: Favorite of butterflies, bees and hummingbirds, host to raspberry pyrausta butterflies
- Height: 4 feet
- Blooms: Aromatic lavender bursts of color bloom July to September.
- Zones 3-9
- Sun: Full to partial



Rudbeckia fulgida
ORANGE CONEFLOWER

- Pollinators: Bees, small butterflies, skippers, moths, and beetles
- Height: 3 feet
- Bloom Color: Yellow-orange petals surrounding a dark brown head show July to September.
- Zones 3-9
- Sun: Full to partial



JUNE GARDEN CALENDAR

HOME (Indoor plants and activities)

- Indoor plants will require more frequent watering and fertilizing as they increase their summer growth.
- You can move houseplants outdoors to a shady location, but pay close attention to their watering needs.
- Cut garden flowers for indoor beauty. Recut the stems again just before placing in water. Add a floral preservative, and change the solution frequently.
- Root cuttings of houseplants and garden plants to increase your collection or share with a friend.

GARDEN (Flowers, vegetables, and small fruits)

- Discontinue harvesting asparagus and rhubarb around mid-June to allow foliage to develop and store carbohydrate reserves for next year's harvest. Fertilize after last harvest and water as needed to promote healthy growth.
- Mulch to control weeds and conserve soil moisture after soil has warmed. You can use many materials, including straw, chopped corncobs, bark chips, shredded paper, and grass clippings.
- Blanch (exclude light from) cauliflower when heads are just 2 inches in diameter. Tie leaves up and over the developing head.
- Control weeds. They're easier to pull when they are still young.
- Start seeds of cabbage, Brussels sprouts, broccoli, and cauliflower for fall garden transplants.
- Plan now for your Halloween pumpkin. Determine the days to harvest for the particular cultivar you want to plant (usually on the seed packet) and count backward to determine the proper planting date.
- Harvest spring plantings of broccoli, cabbage, and peas.
- Remove cool-season plants, such as radish, spinach, and lettuce, because they will bolt (that is, form seed stalks) and become bitter during hot summer weather.
- Continue planting carrots, beans, and sweet corn for successive harvests.
- For staked tomatoes, remove suckers (branches that form where the leaf joins the stem) while they are 1 to 1.5 inches long to allow easier training. No need to remove suckers on caged plants.
- Remove the spent blooms of peony, iris, delphiniums after they fade.
- Pinch the shoot tips of chrysanthemums, impatiens, petunias, and coleus to promote bushier growth.
- Remove the tops of spring-flowering bulbs only after they have yellowed and withered.
- Continue planting gladiolus for a succession of bloom.
- Pick strawberries from the garden or a U-pick operation (check with the farm for COVID-19 U-pick protocols.)
- Protect ripening strawberries from birds by covering with netting.
- Supplement natural rainfall (as needed) to supply a total of 1 to 1.5 inches of water per week to the garden.

YARD (Lawns, woody ornamentals, and fruits)

- Prune spring-flowering shrubs after blooms fade.
- Apply fungicide to prevent and control black spot on roses.
- Water newly planted trees and shrubs. Water deeply every seven to 10 days when rain is lacking.
- Remove faded flowers and seed pods on lilac and other spring-flowering shrubs.
- Many fruit trees experienced freeze damage to flower buds, but a few trees may still have some fruit set. In a normal year if there is a heavy crop, don't be alarmed by a June drop of some fruit. It is a natural thinning process for most trees to prevent excessive loads, although there might not be as much to thin this year. If your trees did manage to set a heavy crop, thin the remaining fruit or prop up heavy branches to avoid breakage. Most fruit should be spaced 6 to 8 inches apart on a branch.
- Mow grass regularly but mow high. Unless excessive, leave lawn clippings on the lawn.
- To keep the lawn green and growing, water as needed to supply a total of 1 to 1.5 inches of water per week. If left unwatered, lawns will turn brown and become dormant during extended hot, dry spells, but will green up again when conditions are more favorable.