

Open Class

INFORMATION

Kosciusko County Community Fair

Kids, Country & the
County Fair

JULY 7 - 13, 2024

WARSAW, INDIANA



NOTICE: THIS BOOKLET CHANGES EACH YEAR. PLEASE BE SURE TO READ
THE RULES, REGULATIONS AND CLASS INFORMATION.

These open class exhibits are sponsored by the Kosciusko County Extension Homemakers

Sue Martin
Robin Shafer

HFA Building Director
HFA Building Assistant Director

574-202-0938
574-453-1187

Check In for Entries	Saturday, July 6	8:00 a.m.--11:30 a.m.
Judging	Saturday, July 6	12:00 pm--Until Finished
Open to Public	Sunday, July 7	1:00 pm--8:00 pm
Open to Public	July 8, 9, 11, 12	12:00 p.m.—8:00 p.m.
Open to Public	Wednesday, July 10	10:00 a.m.—8:00 p.m.
Quilt and Silent Auction	Friday, July 12	5:00 p.m.
Release of Exhibits	Saturday, July 13	9 a.m.—1:00p.m.

1. Open class exhibiting is open to anyone. You do not need to be a member of Indiana Extension Homemakers to exhibit.
2. All entries will be released Saturday, July 13th from 9:00am to 1:00pm. **THERE WILL BE NO ADDITIONAL RELEASE DATES.**
3. **Kosciusko County Extension Homemaker are not responsible for exhibits left after 1:00pm on Saturday, July 13th.**
4. The Department Superintendents will take every precaution with articles on exhibit, but **WILL NOT BE RESPONSIBLE** for loss or damage that may occur.
5. Only two (2) entries per person per category are permitted and they must be different.
6. All entries must have been made since the 2023 Kosciusko County Fair or never before have been exhibited. We reserve the right to reject articles previously entered.
7. Members of the 4-H program **ARE ELIGIBLE** to make entries.
8. There will be a first, second and third place ribbon awarded in each category, unless there are not enough entries or the judge feels an entry does not merit an award.
9. **“Best of Show and Champion” photos will be taken on TUESDAY, JULY 9th at 11:30am.**
10. If someone is entering items for you, mark your entries with your name, address and phone number.
11. For specific departmental rules refer to department listing.
12. **The Department Superintendent reserves the right to eliminate any entry deemed inappropriate for public viewing and the entry will not be judged or displayed.**
13. **Exhibits entered in the wrong department/class will be disqualified. It is the responsibility of the exhibitor to know which Department, Class Name and Section to enter. Example: Crochet Afghans should be in the Needlework Department; Class is Crochet and Section is 1110 Afghan.**

**Kosciusko County Extension Homemakers are affiliated with the
Indiana Extension Homemakers Association**

Quilt Raffle



Extension Homemakers 2024 Quilt Raffle

“A YEAR TO CROW ABOUT” quilt pieced by Sue Martin and quilted by Geneva Veasey will be raffled this year. The printed panel is made up with one section for each month of the year, so it cannot only keep you warm but it is a calender of sorts.

Tickets are being sold for \$1.00 per ticket or 6 tickets for \$5.00. All the county EXTENSION HOMEMAKER CLUB MEMBERS have tickets to sell. They also can be purchased in the Home and Family Arts building during the fair.

The drawing will be held at 5:00pm on Friday, July 12th. You DO NOT need to be present to win. Winners will be contacted by phone shortly after the drawing is completed and they can pick up their items Friday night right after the drawing or on Saturday, July 13th from 9:00am to 1:00pm.

The proceeds from this raffle are used for the three (3) Scholarships the Kosciusko County Extension Homemakers give to College and Trade School students each year.

Thank you to the Fair Superintendents, Assistants, Sponsors, and all of you who entered exhibits. Your support contributed to the success of the Home and Family Arts Department.

Kosciusko County Extension Homemakers

AGRICULTURAL DEPARTMENT

Entry time: 8:00-11:30 a.m. Saturday, July 6th

Superintendent: Kathrine Dwyer

Co-Superintendent: Rae Hilliard

1. Standards for preparing exhibits: Uniformity of size, condition, appetizing appearance, proper handling and insect free.
2. Identify entries with name, address, telephone number and class.

Class 1. GRAIN

- 101 Corn-2023 Crop
- 10 ear sample-any hybrid
 - 1 gallon shelled-any hybrid
- 102 Oats-1 gallon-any variety
- 103 Soybeans-1 gallon-any variety
- 104 Wheat-1 gallon-any variety
- 105 Popcorn-1 gallon shelled-any variety
- 106 Ornamental corn-best 5 ears
- 107 Rye-1 gallon-any variety
- 108 Tallest stalk of corn

Class 2. HAY

- 201 Clover-10 lb. bundle-tied
- 202 Alfalfa-10 lb. bundle-tied
- 203 Mixed-10 lb. bundle-tied

Class 3. VEGETABLES

- 301 Beans-snap bush-green-10 pods-leave ends on
- 302 Beans-snap bush-purple-10 pods-leave ends on
- 303 Beans-snap wax-yellow-10 pods-leave ends on
- 304 Beans-snap pole-green-10 pods-leave ends on
- 305 Beans-snap pole wax-10 pods-leave ends on
- 306 Sweet corn-best 3 ears-any variety in husk

- 307 Peas-10 pods
- 308 Peas-snow-10 pods
- 309 Peas-sugar-10 pods
- 310 Eggplant-1
- 311 Okra-3-1 1/2" to 3" long
- 312 Oriental eggplant-1
- 313 Vegetables-any other kind
- 314 Freak fruit or vegetable

Class 4. CUCUMBERS & SQUASH

- 401 Cucumbers-slicing-3-minimum length 6" leave 1/4" stem
- 402 Cucumbers-dill-3-no longer than 5"-leave 1/4" stem
- 403 Cucumbers-gherkins-leave 1/4" stem
- 404 Cucumbers-pickling-3-no longer than 4"-leave 1/4" stem
- 405 Cucumbers-burpless-3-leave 1/4" stem
- 406 Squash-acorn or any other winter type
- 407 Squash-scallop or patty pan-1-3" to 5" diameter



- 408 Squash-ornamental-1
- 409 Squash-yellow-crook neck
- 410 Squash-yellow-straight neck
- 411 Squash-zucchini-1 1/2" to 2" diameter-5" to 8" long
- 412 Squash-zucchini-yellow
- 413 Squash-zucchini-largest in size

Class 5. LEAF VEGETABLES

- 501 Broccoli-1 head-minimum diameter 3" leave leaves on.
- 502 Cabbage-1 head-don't peel-leave 4 outer leaves
- 503 Red cabbage-1 head-unpeeled-leave 4 outer leaves
- 504 Cauliflower-1 head/trim leaves 1" above top of head
- 505 Lettuce-head
- 506 Lettuce-leaves-3 leaves
- 507 Swiss chard-3 leaves
- 508 Spinach- 3 leaves

Class 6. PEPPERS AND TOMATOES

- 601 Peppers-bell-1-leave 1/2" stem
- 602 Peppers-sweet banana-1-leave 1/2" stem
- 603 Peppers-hot-1- leave 1/2" stem
- 604 Peppers-sweet pimentos-1-leave 1/2" stem
- 605 Any other kind of pepper
- 606 Tomatoes-3 small-no stems-ripe
- 607 Tomatoes-3 large-no stems-ripe
- 608 Tomatoes-yellow-3 large-no stems ripe
- 609 Tomatoes-yellow pear-3-no stems ripe
- 610 Tomatoes-Roma-3-no stems-ripe
- 611 Tomatoes-largest-1-no stem-ripe
- 612 Cherry tomatoes-6-no stems-ripe
- 613 Grape tomatoes-6-no stems-ripe

Class 7. ROOT CROPS

You may spray wash beets and carrots gently. Do not scrub. Do not wash or peel onions. Gently remove excess dirt. Standardize length or display "useable" part.

- 701 Beets-3-leave 1" top-under 1 1/2" diameter
- 702 Beets-3-leave 1" top-over 1 1/2" diameter
- 703 Kohlrabi-suggested size less than 3"- trim off bottom root-trim stems to 1/2"
- 704 Carrots-3-leave 1" top
- 705 Onion sets-3
- 706 Onions-green-3-leave tops on
- 707 Onions-white-3-unpeeled, unwashed-leave 1/2" top
- 708 Onions-yellow-3-unpeeled, unwashed-leave 1/2" top
- 709 Onions-red-3-unpeeled, unwashed- leave 1/2" top
- 710 Onions-winter-3-leave 1/2" top



- 711 Radishes-red-3
- 712 Radishes-white-3
- 713 Radishes-any other kind-3
- 714 Root crops-any other kind
- 715 Potatoes-white-3
- 716 Potatoes-red-3
- 717 Potatoes-any other kind-3

Class 8. FRUIT

- 801 Apples-3
- 802 Apricots-3
- 803 Blackberries-10
- 804 Black raspberries-cultivated-10
- 805 Red raspberries-cultivated-10
- 806 Black raspberries-wild-10
- 807 Red raspberries-wild-10
- 808 Blueberries-10
- 809 Cherries-Sweet-10
- 810 Cherries-sour-10
- 811 Currants-10
- 812 Gooseberries-10
- 813 Mulberries-10
- 814 Peaches-3
- 815 Plums-3
- 816 Rhubarb-3-cut off root and leaf
7" stalks
- 817 Other fruit-3 fruit-10 berries-1
bunch

Class 9. NUTS

- 901 Pecans-3
- 902 English Walnuts-3
- 903 Black Walnuts-3
- 904 Peanuts-3
- 905 Any other nut

Class 10. SCARECROWS

- 1001 Scarecrow-any kind-free
standing straw stuffed

Class 11. YOUTH (10 & under)

- 1101 Funny face or animal made
from vegetable
- 1102 Any other item

Class 12. JUNIOR (age 11-17)

- 1201 Any item

Champion

Grain

Hay

Vegetables

Cucumbers & Squash

Leaf Vegetables

Peppers & Tomatoes

Root Crops

Fruit

Nuts

Scarecrow

Youth

Junior

**BEST OF SHOW
AWARD
AGRICULTURE
DONATED BY:**

**TIPPY RIVER
ADVENTURES**

CRAFTS DEPARTMENT

Entry time: 8:00-11:30 a.m. Saturday, July 6th

Superintendent: Marvene Johnson

Co-Superintendent: Cyndy Light

All articles must have been made since the 2023 Kosciusko County Fair or never before have been exhibited.

Class 1. WOOD

- 101 Carving in the round—realistic
- 102 Carving in the round—character
- 103 Carving-Laser
- 104 Carving-any other item
- 105 Woodworking
- 106 Wooden toy
- 107 Wood burning
- 108 Lathe woodworking
- 109 Relief Carving
- 110 Furniture
- 111 Laser
- 112 Any other wood craft

Class 2. CERAMICS

- 201 Glazed and fired-poured or molded
- 202 Non-fired finish-poured or molded
- 203 Porcelain
- 204 Any other ceramic craft not listed

Class 3. FLORAL DESIGN & NATURE CRAFTS

Handmade

- 301 Silk flowers arrangement in a container
- 302 Silk flower arrangement on a wreath
- 303 Any other Handmade Artificial Flower not listed
- 304 Shell craft
- 305 Wreaths or Swags made with Natural items

- 306 Gourds
- 307 Any other nature craft not listed

Class 4. MISCELLANEOUS CRAFTS

- 401 Macramé item
- 402 Centerpieces-table scape
- 403 Miniatures
- 404 Beadwork
- 405 Door decoration/wall hangings non-Holiday
- 406 Acrylic painting-on metal, slate, wood etc.
- 407 Oil Painting on metal, slate, wood, etc.
- 408 Stencil on wood, rugs, fabric etc.
- 409 Stencil and Painting together on wood, etc.
- 410 Button craft
- 411 Rugs made on a loom
- 412 Leather Craft
- 413 Basket Weaving
- 414 Diamond Painting
- 415 Resin molded, may contain glitter, flowers, etc.
- 416 Resin poured with glass, etc.
- 417 Pour painting on canvas or other object
- 418 Recycle/ Upcycled Articles-(each item must include a statement describing materials original use)
- 419 Any other miscellaneous craft

Class 5. HOLIDAY

- 501 Holiday Arrangements and Center pieces
- 502 Ornaments and Decorations
- 503 Any other holiday craft not listed

Class 6. PAPER & GLASS CRAFTS

- 601 Stamping
- 602 Paper cutting
- 603 Cards or note paper
- 604 Scrapbook pages-no more than 4 pages
- 605 Any other paper craft not listed
- 606 Painted glass
- 607 Fused glass
- 608 Stained glass
- 609 Stained glass and resin
- 610 Crushed or broken glass and resin
- 611 Mosaics
- 612 Any other craft using glass not listed

Class 7. HANDMADE JEWELRY

- 701 Bracelets
- 702 Necklaces
- 703 Earrings and pins
- 704 Rings
- 705 Any other handmade jewelry not listed

Class 8. YOUTH (ages 10 and under)

- 801 Recycle/Upycled (must have statement telling of original use)
- 802 Jewelry
- 803 Stitchery-weaving
- 804 Beadwork
- 805 Paper craft
- 806 Models
- 807 Any other craft not listed

Class 9. JUNIOR (ages 11 - 17)

- 901 Recycle/Upycled (must have statement telling of original use)
- 902 Jewelry
- 903 Stitchery—weaving
- 904 Beadwork
- 905 Paper craft
- 906 Models
- 907 Any other craft not listed

Class 10. Professional (Not eligible for Best of Show)

- 1001 Any item

Champion

Wood
Ceramics
Artificial Flowers & Nature Crafts
Miscellaneous Crafts
Holiday
Paper and Glass
Handmade Jewelry
Youth
Junior
Professional

**BEST OF SHOW
AWARD
CRAFTS DONATED
BY:**

**DAN & BECKY TUSING
FAMILY**

FINE ARTS DEPARTMENT

Entry time: 8:00-11:30 a.m.—Saturday, July 6th

Superintendent: Peggy Parzygnot

Co-Superintendent:

All entries must have been made since the 2023 Kosciusko County Fair or never before have been exhibited.

- This department is open to professionals and non professionals. Professionals may exhibit only.**
- All articles must be completely finished and ready for hanging on a peg board hook.**

Class 1. ADULTS

- 101 Oil
- 102 Acrylic
- 103 Watercolor
- 104 Pen and ink drawings
- 105 Pencil or charcoal-any type
- 106 Pastel
- 107 Sculpture
- 108 Mixed media
- 109 Any other art

Class 2. JUNIOR (11-17)

- 201 Oil
- 202 Acrylic
- 203 Watercolor
- 204 Pen and ink drawings
- 205 Pencil or charcoal-any type
- 206 Pastel
- 207 Sculpture
- 208 Mixed media
- 209 Any other art

Class 3. YOUTH (10 and under)

- 301 Oil
- 302 Acrylic
- 303 Watercolor
- 304 Pen and ink drawing

- 305 Pencil or charcoal-any type
- 306 Paints (finger paints)
- 307 Crayon
- 308 Pastels
- 309 Any other art

Class 4. PROFESSIONAL (*Not eligible for Best of Show*)

- 401 Arts-any item

Class 5. Assisted Living Facilities

- 501 Colored Pencils
- 502 Any item

Champion

Adult
Junior (11-17)
Youth (10 and under)
Professional
Assisted Living Facilities

**BEST OF SHOW AWARD
FINE ARTS DONATED BY:**

**BLOSSER'S PHOTO
DESIGN CENTER**

PHOTOGRAPHY DEPARTMENT

Entry time: 8:00-11:30 a.m.—Saturday, July 6th

Superintendent: Laurie Renier

Co-Superintendent:

All entries must have been made since the 2023 Kosciusko County Fair or never before have been exhibited.

1. This department is open to professionals and non professionals.

Professionals may exhibit only.

2. All articles must be ready to hang on a peg board hook.

Class 1. Black & White

101 Animals/Insects

102 Human interest

103 Nature-flora

104 Nature-scenic

105 Architecture

106 Portrait

107 Canvas print

108 Unspecified

Class 4. YOUTH (10 and under)

401 Black and white

402 Color

403 Canvas

404 Unspecified

Class 5. PROFESSIONAL (Not eligible for Best of Show)

501 Photography-any item

Class 2. Color

201 Animals/Insects

202 Human interest

203 Nature-flora

204 Nature-scenic

205 Architecture

206 Portrait

207 Canvas print

208 Unspecified

Class 3. JUNIOR (ages11-17)

301 Black and white

302 Color

303 Canvas

304 Unspecified

Champion

Black & White

Color

Junior (11-17)

Youth (10 and under)

Professional

Professional

**BEST OF SHOW AWARD
PHOTOGRAPY DONATED BY:**

**BLOSSER'S PHOTO
DESIGN CENTER**

FOOD PRESERVATION DEPARTMENT

Entry time: 8:00-11:30 a.m. Saturday, July 6th

Superintendent: Dawn Harris

Co-Superintendent: Robin Hoffer

All entries must have been made since the 2023 Kosciusko County Fair.

1. No entry will be open for tasting.
2. **ALL FOODS MUST BE SEALED IN REGULATION CANNING JARS.** Leave ring on jar for judging.
3. The committee will not sell canned goods.
4. All entries must be processed according to U.S.D.A. rules. Paraffin seals and inversion sealing methods are NOT recommended by U.S.D.A. For U.S.D.A. rules <https://www.healthycanning.com/usda-complete-guide-home-canning>.
5. No frozen foods will be accepted.
6. **ALL ENTRIES MUST BE LABELED WITH PRODUCT NAME, DATE OF CANNING, LENGTH OF TIME PROCESSED AND METHOD.**
7. All jars should be clean with no rusty rings
8. Recipes must be submitted for **ALL ENTRIES. Please submit a typed or handwritten copy including processing method and include your name.**

Class 1. CANNED VEGETABLES

- 101 Beets -not pickled
- 102 Carrots
- 103 Green beans
- 104 Beans-any other kind
- 105 Mixed vegetables
- 106 Sauerkraut
- 107 Soup-with meat
- 108 Soup-without meat
- 109 Soup, other
- 110 Tomatoes
- 111 Tomato juice
- 112 Vegetable juice-other
- 113 Vegetables-other
- 114 Greens

Class 2. CANNED MEATS

- 201 Beef
- 202 Poultry
- 203 Pork
- 204 Any other meat

Class 3. CANNED FRUIT

- 301 Applesauce
- 302 Apricots
- 303 Cherries
- 304 Peaches
- 305 Pears
- 306 Plums
- 307 Berries-any kind
- 308 Fruit-any other kind
- 309 Fruit juice
- 310 Fruit pie filling

Class 4. PICKLES, RELISHES & MISCELLANEOUS

- 401 Beet pickles
- 402 Bread & butter pickles
- 403 Dill pickles
- 404 Sweet pickles
- 405 Pickles-any kind
- 406 Last of garden
- 407 Relish-any kind
- 408 Tomato sauce
- 409 Flavored vinegar-sealed in regulation jar
- 410 Mince meat
- 411 Salsa
- 412 Other



Class 5. JAMS & JELLIES

Must be sealed; NO paraffin seals

- 501 Jelly
- 502 Preserves
- 503 Fruit butter
- 504 Marmalade
- 505 Jam
- 506 Diabetic Jam or Jelly

Class 6. DRIED FOODS

- 601 Any kind

Class 7. MISCELLANEOUS

- 701 Any item

Class 8. YOUTH (ages 10 and under)

- 801 Any item

Class 9. JUNIORS (ages 11-17)

- 901 Any item

CHAMPION

Canned Vegetables
Canned Meats
Canned Fruits
Pickles, Relish & Miscellaneous
Jams & Jellies
Dried Foods
Miscellaneous
Youth
Junior

**BEST OF SHOW
AWARD FOOD
PRESERVATION
DONATED BY:**

SMITH APPLIANCE

FOODS DEPARTMENT

Entry Time: 8:00-11:30 a.m. Saturday, July 6th

Superintendent: Judy Egolf

Co-Superintendent: Janice Bolin

1. Bring all items whole, except where noted.
2. Recipes should be from “scratch” except class 107 & 505
3. Recipes are to be submitted for **ALL ENTRIES. Please submit a TYPED copy (if possible) on a full or half sheet of 8 1/2 by 11 sheet of paper. Recipes can be printed from the internet. Please include your name on the recipe.**
4. All items will be disposed of following the Fair.
5. Food Safety rules as follows:
 - **Food baked product competitions: Filling, frosting, glazing, pie filling and meringue whether uncooked or cooked are not permitted to contain cream cheese, whipped cream, unpasteurized milk or eggs/egg whites (pasteurized eggs or eggs cooked to 160 degrees may be used). No home-canned fruits, vegetables or meats are permitted in products. Recipes must be provided that show which ingredients were used in each part of the product. Contestants should carefully wash their hands and make sure that their hands do not have any open cuts before preparing foods.**
 - Whenever possible, baked products should be transported and stored in chilled coolers (41 degrees F).
 - Judges and individuals who will consume products from county and state competitions should be informed that they are at risk for food borne illness since the established policy cannot guarantee that an entry which is a “potentially hazardous food” has been properly prepared or handled before, during or following the competition.
6. Decorated cakes may be box cakes or a cake form. They will be judged whole.
7. Pies may be baked in a 4” pie pan.
8. **Please bring ALL other entries on a paper/foam plate, disposable aluminum pan or disposable heavy cardboard covered with foil.**
9. We prefer that cakes not be iced but if they are, icing will also be judged.
10. **REMINDER: BAKED ITEMS MAY BE PICKED UP AFTER JUDGING.**

Class 1. CAKES

- 101 Angel food, sponge or chiffon cake
- 102 Butter cake
- 103 White cake-any kind
- 104 Chocolate cake-any kind
- 105 Cup cakes
- 106 Cake-any other kind
- 107 Cake mix variations-added ingredients

Class 2. DECORATED CAKE

Judged Whole

- 201 Wedding cake or anniversary cake
- 202 Decorated cake-other
- 203 Decorated cupcakes-plate of 3

Class 3. COOKIES-Plate of 3

- 301 Bar cookies
- 302 Ball/Drop cookies
- 303 Fancy cookies
- 304 Slice and bake cookies
- 305 Pressed or shaped cookies
- 306 Sandwich cookies
- 307 No-bake cookies
- 308 Any other cookies

Class 4. YEAST BREADS

- 401 Yeast coffee cake or tea ring
- 402 Loaf bread-white or dark
- 403 Bread machine item
- 404 Dinner rolls-plate of 3
- 405 Sweet rolls-plate of 3
- 406 Herb bread
- 407 Any other yeast product

Class 5. QUICK BREADS

- 501 Quick bread-fruit, vegetable or nut

- 502 Sweet rolls or coffee cake-plate of 3
- 503 Baking powder biscuits-plate of 3
- 504 Muffins-any kind-plate of 3- may use paper liners
- 505 Quick bread mix variations-added ingredients (commercial mix)
- 506 ingredients (commercial mix)
- 507 Any other quick bread

Class 6. PIES

- ***No custard or cream pies of any kind will be judged.***
- ***May use Glass pie plates, we will not be responsible for breakage or returning to owner.***
- 601 Pie-2 crust-whole-fruit or nut
- 602 Pie-1 crust-whole-fruit or nut
- 603 Tarts-3 -whole-fruit or nut

Class 7. CANDY

- 701 Fudge-plate of 3 pieces
- 702 Divinity or sea foam-plates of 3 pieces
- 703 Nut brittle or toffee-plate of 3 pieces
- 704 Dipped candy-plate of 3 pieces
- 705 Candy-any other kind

Class 8. SPECIALITY/DIABETIC/ GLUTEN-FREE

- 801 Cookies-plate of 3
- 802 Cake-any kind
- 803 Candy-plate of 3 pieces
- 804 Bread-yeast
- 805 Bread-quick
- 806 Gluten-free

Class 9. SNACK MIX

- 901 2 cups in Ziplock bag, labeled

Class 10. YOUTH (10 & under)

- 1001 Cookies-any kind-plate of 3
- 1002 Cake
- 1003 Quick bread
- 1004 Candy-plate of 3 pieces
- 1005 Cup cakes
- 1006 Yeast rolls or yeast bread plate of 3
- 1007 Decorated cake or cupcakes-3
- 1008 Any other item

Class 11. JUNIORS (ages 11-17)

- 1101 Cookies-any kind-plate of 3
- 1102 Cake
- 1103 Quick bread
- 1104 Candy-plate of 3 pieces
- 1105 Cup cakes
- 1106 Yeast rolls or yeast bread-plate of 3
- 1107 Decorated cake or cupcakes-3
- 1108 Any other item



CHAMPION
Cake
Decorated Cake
Cookie
Yeast Breads
Quick Breads
Pies
Candy
Diabetic Baking
Snack Mix
Youth
Junior

**BEST OF SHOW
AWARD FOODS
DONATED BY:**

**SMITH
APPLIANCE**



GARDEN FLOWERS & PLANTS DEPARTMENT

Entry Time: 8:00-11:30 a.m. Saturday, July 6th

Co-Superintendent: Deb Schroeder

Co-Superintendent: Teresa Landis

1. Containers must be furnished by exhibitor at his/her own risk and must be weighted. Styrofoam cups **ARE NOT** recommended.
2. Hanging plants may be entered.
3. The entries requiring more than 1 bloom should be of the same color but may be more than 1 stem.
4. Wired flowers will not be accepted.
5. No plants or flowers will be entitled to a prize or other award unless they possess points of superiority. No award will be made to unworthy specimens even though they may be the only one of their kind on exhibit.
6. Add a commercial floral preservative to water when you bring flowers to exhibit and they will last longer.
7. Exhibits which have previously won may not be reentered for judging.
8. Fresh flowers may be brought in during the week to freshen your exhibit.
9. All exhibits must be homegrown flowers-**NO ARTIFICIAL FLOWERS AND NO PURCHASED FLOWERS**-unless exhibiting in the professional category.
10. All entries must be fresh, clean and free of insects.
11. **Children who enter must have helped to plant and cultivate.**

Class 1. ROSES

- | | |
|---|--------------------------------|
| 101 Hybrid tea-1 bloom-at least 6" stem | 206 Coreopsis-3 blooms |
| 102 Floribunda-1 stem | 207 Cosmos-3 blooms |
| 103 Grandiflora-1 stem | 208 Daisy-3 blooms |
| 104 Miniature-1 stem | 209 Dianthus-3 stems of blooms |
| 105 Shrub/climber-1 stem-includes knockout roses. | 210 Gaillardia-3 blooms |
| | 211 Gardenia-3 blooms |
| | 212 Impatiens-3 stems |

Class 2. GARDEN FLOWERS

Small stemmed. All entries should be the same color.

- | | |
|---|--|
| 201 Aster-double-3 blooms | 213 Marigold-3 blooms |
| 202 Calendula-3 blooms | 214 Nasturtium-3 blooms |
| 203 Centaurea-3 blooms (Bachelor Buttons) | 215 Pansy-3 blooms |
| 204 Chrysanthemum-3 blooms | 216 Petunia-3 blooms |
| 205 Coneflower-any color-3 blooms | 217 Poppy-3 stems |
| | 218 Rudbeckia (Black-Eyed Susan)-3 stems |
| | 219 Snapdragons-3 stems |

- 220 Zinnia-3 blooms
- 221 Any other flower-3 blooms

Class 3. GARDEN FLOWERS

- 301 Cannas-1 bloom or stem
- 302 Celosia-1 stem
- 303 Cleome-1 stem
- 304 Dahlia-1 stem
- 305 Delphinium-1 stem
- 306 Gladiolus-1 stem
- 307 Geranium-1 stem
- 308 Hollyhock-1 stem
- 309 Hydrangea-1 stem
- 310 Lily-1 stem
- 311 Day Lily-1 Stem
- 312 Phlox-1 stem
- 313 Status-1 stem
- 314 Strawflower-1 stem
- 315 Baby's Breath-1 nice full stem
- 316 Sunflower-1 stem
- 317 Single stem flower-any kind

Class 4. ARRANGEMENTS

- 401 All green arrangement
- 402 Flower arrangement-any variety
- 403 Bowl-rose in a bowl
- 404 Bowl-any other flower
- 405 Holiday-any table arrangement
- 406 Mixed flower arrangement
- 407 Miniature arrangement-not over 3"
- 408 Rose arrangement
- 409 Table arrangement-all sides must look the same
- 410 Wildflower arrangement
- 411 Miscellaneous arrangement in water
- 412 Dried flower arrangement

Class 5. CONTAINER PLANTS

- 501 Begonia
- 502 Cactus
- 503 Flowering plant
- 504 Flowering vining plant
- 505 Gloxinia
- 506 Novelty plant
- 507 Orchid-blooming
- 508 Orchid-not blooming
- 509 Succulents
- 510 Terrarium
- 511 Violet-any color-any kind
- 512 Hanging basket-any kind
- 513 Mixed container plants
- 514 Tillandsia (Air Plant)
- 515 Any other container plant



Class 6. FOLIAGE PLANTS

- 601 Caladiums-any variety
- 602 Coleus
- 603 Ferns
- 604 Philodendron
- 605 Mixed succulent display
- 606 Mixed foliage container
- 607 Other foliage plant

Class 7. PROFESSIONAL

(Not Eligible for Best of Show)

- 701 Flowers-any type
- 702 Arrangement-any type
- 703 Container-any type

Class 8. YOUTH (10 & under)

- 801 Flowers-any type
- 802 Arrangements-any type
- 803 Container plants-any type

Class 9. JUNIORS (ages 11-17)

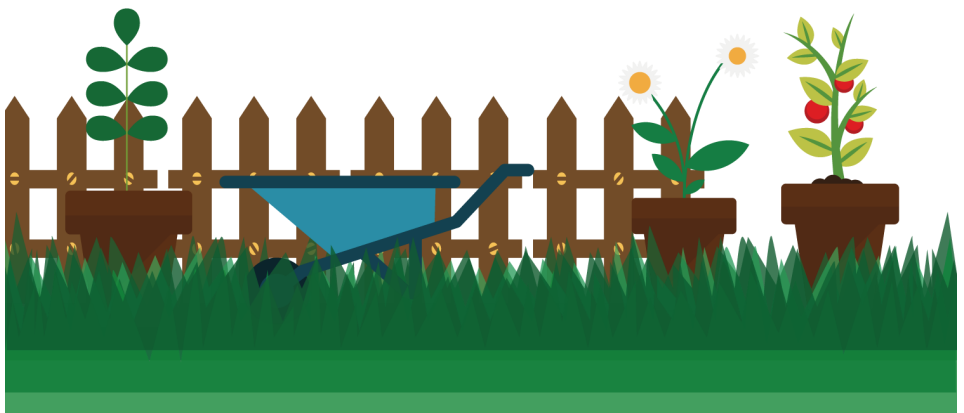
- 901 Flowers-any type
- 902 Arrangements-any type
- 903 Container plants-any type

CHAMPION

- Rose
- Arrangements
- Container Plants
- Foliage Plants
- Youth
- Junior
- Professional
- Garden Flowers—Class 2
- Garden Flowers—Class 3

**BEST OF SHOW
AWARD GARDEN
FLOWERS &
PLANTS
DONATED BY:**

**CLAYTON
GARDEN CENTER**



HERBS DEPARTMENT

Entry Time: 8:00-11:30 a.m. Saturday, July 6th

Superintendent: Amy Thompson

Co-Superintendent: Kendra Thompson

1. According to size of your herbs, bring **several** cut stems to display in provided 9 oz. cup.
2. Herb stems must be less than 10".
3. Have your entries identified along with your name, email address and telephone number on a 3"x 5" card.
4. NO BLOOMS UNLESS SPECIFIED.
5. **Children who enter must help to plant and cultivate.**
6. **All entries must be fresh, healthy, free of insects and insect damage.**

Class 1. EDIBLE HERBS

- | | |
|--|--|
| 101 Basil-any kind | 203 Costmary |
| 102 Chives | 204 Feverfew with or without blooms |
| 103 Cilantro/Coriander | 205 Houseleek-Hen & Chicks (may be in a pot) |
| 104 Dill head—10" or under stem with or without blooms | 206 Hyssop |
| 105 Garlic-2 bulbs-do not wash | 207 Lambs ear |
| 106 Mints-any kind | 208 Lavender-with blooms |
| 107 Lemon balm | 209 Lady's mantle with or without blooms |
| 108 Lovage | 210 Cat Nip/Cat Mint |
| 109 Marjoram/Oregano | 211 Any other herb-medicinal |
| 110 Parsley | |
| 111 Rosemary | |
| 112 Sage | |
| 113 All Savory | |
| 114 Stevia | |
| 115 Tarragon | |
| 116 Thyme | |
| 117 Any other herb-edible | |

Class 2. MEDICINAL HERBS

- 201 Bee balm blooms
- 202 Comfrey



Class 3. ALL OTHER HERBS

- 301 Artemesia
- 302 Santolina
- 303 Tansy-with or without blooms
- 304 Yarrow-with blooms
- 305 Garlic tops
- 306 Russian sage-with blooms-may be over 10" total length
- 307 Scented Geranium
- 308 Any other herb-decorative
- 309 Dried herb-decorative
- 310 Special herb display-any kind
- 311 Potted Herbs, single variety
- 312 Potted Herbs, mixed variety



Class 4. YOUTH (10 & under)

- 401 Edible
- 402 Medicinal
- 403 Decorative
- 404 Any other herb

Class 5. JUNIORS (ages 11-17)

- 501 Edible
- 502 Medicinal
- 503 Decorative
- 504 Any other herb

CHAMPION

Edible
Medicinal
All other herbs
Youth
Junior

**BEST OF SHOW
AWARD HERBS
DONATED BY:**

**SMITH
APPLIANCE**

NEEDLEWORK DEPARTMENT

Entry Time: 8:00-11:30 a.m. Saturday, July 6th

Superintendent: Julie Popenfoose

Co-Superintendent: Shirley Stevens

1. All exhibits must be handwork and all articles finished by individual making entry (see category 104, 204, 304, 404, 504, 604, and 701 concerning quilting).
2. Entries in pillowcases are to exhibit only one of the pair.
3. Binding on hooked rugs exhibited by children will not be judged.
4. Pictures must be framed (by exhibitor or professional) and ready to hang. A wire hanger is preferred.
5. Doilies may be mounted on a stiff surface for display and judging.
6. Previously exhibited items at the Kosciusko County Fair cannot be re-exhibited.
7. No plastic canvas; enter plastic canvas in the Crafts Department.
8. A quilt consists of a top (pieced or whole cloth), batting and backing layered and **stitched through all 3 layers.**
9. All items must be **CLEAN!**

QUILTING

Class 1. PIECED QUILT (hand or machine) *Bed size (Minimum size 72" x 90" or greater than 6480 sq inches)*

- 101 Hand quilted by exhibitor
- 102 Home machine quilted by exhibitor
- 103 Machine quilted by exhibitor on long arm machine
- 104 Machine or Hand quilted-not by exhibitor

Class 2. HAND APPLIQUE QUILT

Bed size (Minimum size 72" x 90" or greater than 6480 sq inches)

- 201 Hand quilted by exhibitor
- 202 Home machine quilted by exhibitor
- 203 Machine quilted by exhibitor on long arm machine
- 204 Machine or Hand quilted not by exhibitor

Class 3. MACHINE APPLIQUE QUILT ***Bed size (Minimum size 72" x 90" or greater than 6480 sq inches)***

- 301 Hand quilted by exhibitor
- 302 Home machine quilted by exhibitor
- 303 Machine quilted by exhibitor on long arm machine
- 304 Machine or Hand quilted-not by exhibitor



Class 4. PIECED QUILT (hand or machine) (Smaller than 72" x 90" or less than 6480 sq inches)

- 401 Hand quilted by exhibitor
- 402 Home machine quilted by exhibitor
- 403 Machine quilted by exhibitor on long arm machine
- 404 Machine or Hand quilted not by exhibitor

Class 5. HAND APPLIQUE QUILT (Smaller than 72" x 90" or less than 6480 sq inches)

- 501 Hand quilted by exhibitor
- 502 Home machine quilted by exhibitor
- 503 Machine quilted by exhibitor on long arm machine
- 504 Machine or Hand quilted not by exhibitor

Class 6. MACHINE APPLIQUE QUILT (Smaller than 72" x 90" or less than 6480 sq inches)

- 601 Hand quilted by exhibitor
- 602 Home machine quilted by exhibitor
- 603 Machine quilted by exhibitor on long arm machine
- 604 Machine or Hand quilted not by exhibitor

Class 7. OTHER QUILT

- 701 Quilt made by group (i.e. multigenerational, round robin, school project)
- 702 Combination of more than one technique
- 703 Original design (includes T-shirt quilts)
- 704 Whole cloth quilt
- 705 Hand embroidery, including cross stitch
- 706 Machine embroidery, includes quilted in machine embroidery hoop

- 707 Holiday quilt
- 708 Hand tied comforter

Class 8. QUILTED WALLHANGINGS

- 801 Pieced
- 802 Appliqué
- 803 Combination of more than one technique
- 804 Other

Class 9. QUILTED ACCESSORIES

- 901 Decorative items (i.e. placemats, table runners, pillow or sham, purse or tote)
- 902 Quilted wearable (i.e. jackets, vests)
- 903 Other

CHAMPION

- Pieced Quilt (Class 1 & 4)
- Hand Applique Quilt (Class 2 & 5)
- Machine Applique Quilt (Class 3 & 6)
- Other Quilt (Class 7)
- Wall Hangings & Accessories (Class 8 & 9)

**BEST OF SHOW
AWARD QUILTING
DONATED BY:**

**LOWERY'S SEWING
AND VACUUM
CENTER**

NEEDLEWORK DEPARTMENT

Class 10. KNITTING

- 1001 Hand knit cardigan sweater-adult
- 1002 Hand knit pullover sweater-adult
- 1003 Hand knit lace sweater-adult
- 1004 Hand knit sweater-child/baby
- 1005 Hand knit set (2 or more pieces)-child/baby
- 1006 Hand knit lace garment-child/baby
- 1007 Hand knit afghan
- 1008 Hand knit afghan-baby size
- 1009 Hand knit doily or table cloth - lace
- 1010 Hand knit household item (i.e. dish cloth, pillow, pot holder)
- 1011 Hand knit hat, scarf, or cowl
- 1012 Hand knit socks, mittens, slippers or gloves
- 1013 Hand knit cape or shawl
- 1014 Machine or loom knit - any item
- 1015 Doll or animal
- 1016 Any other hand knit item

Class 11. CROCHET

- 1101 Sweater-adult
- 1102 Cape or shawl-adult
- 1103 Sweater-child/baby
- 1104 Any other garment-child/baby
- 1105 Baby set-2 or more pieces
- 1106 Rug
- 1107 Tablecloth
- 1108 Accessories (i.e. hat, slippers, scarf)
- 1109 Doily or table runner
- 1110 Afghan
- 1111 Afghan-baby
- 1112 Doll or animal
- 1113 Any other crochet item

Class 12. EMBROIDERY

- 1201 Crewel-any item
- 1202 Dresser scarf
- 1203 Tablecloth
- 1204 Pillow case
- 1205 Pillow
- 1206 Ribbon embroidery
- 1207 Towel
- 1208 Machine embroidery-any item except quilt
- 1209 Quilt-includes stamped pre-quilted (judging priority will be on embroidery)
- 1210 Any other embroidered item

Class 13. NEEDLEPOINT

- 1301 Pillows
- 1302 Pictures
- 1303 Any other needlepoint item

Class 14. COUNTED CROSS STITCH

- 1401 Sampler- sayings
- 1402 Birds
- 1403 Animals/Fish
- 1404 Scenery
- 1405 Still Life
- 1406 People
- 1407 Fruit or vegetables
- 1408 Flowers
- 1409 Holiday
- 1410 Any other item



Class 15. MISCELLANEOUS

- 1501 Smocking
- 1502 Tatting
- 1503 Hooked rug (includes latch and locker) or wall hanging
- 1504 Cloth doll—handmade
- 1505 Stuffed toy
- 1506 Swedish weaving
- 1507 Weaving
- 1508 Felted any item
- 1509 Yarn-hand spun-1 hank
- 1510 Any other article

CHAMPION

Knitting
Crochet
Embroidery
Needlepoint
Counted Cross Stitch
Miscellaneous
Youth
Junior

Class 16. YOUTH (10 and under)

- 1601 Quilt
- 1602 Knit
- 1603 Crochet
- 1604 Embroidery
- 1605 Needlepoint
- 1606 Counted cross stitch
- 1607 Latch hook
- 1608 Any other item

**BEST OF SHOW
AWARD
NEEDLEWORK
DONATED BY:**

**IN MEMORY OF
ROBERT & BETTY
BUSCH**

Class 17. JUNIOR (ages 11-17)

- 1701 Quilt
- 1702 Knit
- 1703 Crochet
- 1704 Embroidery
- 1705 Needlepoint
- 1706 Counted cross stitch
- 1707 Latch hook
- 1708 Any other item



SEWING DEPARTMENT

Entry Time: 8:00-11:30 a.m. Saturday, July 6th

Superintendent: Marsha Miller

Co-Superintendent: Jan Godshalk

1. All items must be made at home and finished by individual making entry.
2. All entries must have been made since the 2023 Kosciusko County Fair or never before have been exhibited.
3. Items must be **CLEAN!**

Class 1. INFANT/TODDLER

Size: INFANT/TODDLER

- 101 Baby bib-any kind
- 102 Dress-through size 3
- 103 Child's play outfit, romper, slacks or shorts
- 104 Boy's dress outfit
- 105 Any other garment

Class 2. CHILDRENS

Size: 4-14

- 201 Child's play outfit-ensemble
- 202 Child's jumper or sundress
- 203 Child's dress
- 204 Child's formal wear
- 205 Child's coat or jacket
- 206 Child's blouse or shirt
- 207 Child's slacks, shorts or skirt
- 208 Child's costume
- 209 Jogging suit or sleepwear
- 210 Any other garment

Class 3. ADULTS- QUICK AND EASY

- 301 Housecoat, sleepwear or jogging suit
- 302 Blouse-any kind
- 303 Skirt-any kind

- 304 Slacks or shorts-men's or lady's
- 305 Any other garment

Class 4. ADULTS

- 401 Ensemble
- 402 Dress-any kind
- 403 Unlined suit
- 404 Lined jacket or coat
- 405 Unlined jacket or coat
- 406 Vest only-men's or lady's
- 407 Men's shirt
- 408 Men's sport coat or suit
- 409 Any other garment

Class 5. ADULTS-OTHER

- 501 Upcycled article— any kind—attach a 3" x 5" card explaining entry
- 502 Machine Applique/ Embroidery on an item made by you
- 503 Historical or costume garment(s) include all pieces
- 504 Doll clothes
- 505 Sweatshirt Jacket
- 506 Any other garment

Class 6. FORMAL WEAR

- 601 Dressy dress
- 602 Wedding gown
- 603 Tailored suit
- 604 Any other garment

Class 7. SEWING FOR THE HOME

- 701 Pillows
- 702 Bedspread/Fleece Blankets
- 703 Tote, travel accessories, etc.
- 704 Table runner
- 705 Pillowcases
- 706 Any other home decor

Class 8. ACCESSORIES, ETC

- 801 Scarf
- 802 Purse
- 803 Hat
- 804 Purchased and embellished and sewn by you
- 805 Aprons
- 806 Any other accessory

Class 9. YOUTH (ages 10 and under)

- 901 Any item

Class 10. JUNIOR (ages 10-17)

- 1001 Any item

Champion

Toddler
Children
Adult-Quick and Easy
Adult-Tailored items
Adult –Other Items
Formal Wear
Sewing for the Home
Accessories
Youth
Junior
Professional

**BEST OF SHOW
SEWING AWARD
DONATED BY:**

**LOWERY'S
SEWING AND
VACUUM CENTER**



Why Belong to an Extension Homemaker Club?



There's a real beauty in the belonging to an Extension Homemaker Club. In your club you will meet people who are a lot like you. They are concerned about their families, have similar lifestyles, and encounter similar situations.

Clubs meet monthly to learn more about their home and community and to have a good time with each other.

Educational programs are given throughout the year. If interested, any club member or even the general public may attend these lessons. Great handouts are given so that you may share the information with club members who did not attend and with your family.

Several countywide events are held each year to get all the clubs together. Each club also has their special events for their members, such as day trips, and all clubs do charity work of various types.

Your club will give you a chance to share ideas with your fellow club members. And by sharing your time and efforts with them, everyone learns. Sound fun and inspiring? It is!

But needless to say, the more sincere your effort and the more you invest in your club, the more you'll gain from it. So be a club investor and reap the many benefits your club has to offer.

To learn more about becoming an Extension Homemaker, please contact:

Purdue Extension Kosciusko County

202 West Main St.

Warsaw, IN 46580

(Phone) 574-372-2340

<http://www.extension.purdue.edu/kosciusko>

Purdue University, Indiana Counties and U.S. Department of Agriculture Cooperating
An Affirmative Action/Equal Opportunity Institution

It is the policy of the Purdue University College of Agriculture that all persons shall have equal opportunity and access to the programs and facilities without regard to race, color, sex, religion, national origin, age, marital status, parental status, sexual orientation, or disability. Purdue University is an Affirmative Action employer.



PURDUE
UNIVERSITY®

Extension