

4-H FAMILY RESOURCE GUIDE

2025-2026 Edition

Johnson County
Franklin, Indiana



#4HBeyondReady



Extension - 4-H Youth
Development



An equal access/equal opportunity university

TABLE OF CONTENTS

03	WHAT IS 4-H
05	HOW TO JOIN
06	ONLINE REGISTRATION
07	CLUB INFORMATION
10	PROJECTS
12	4-H DEFINITIONS
13	PEOPLE IN 4-H
15	4-H PARENTS
17	FREQUENTLY ASKED QUESTIONS

THE INDIANA 4-H YOUTH DEVELOPMENT MISSION IS TO PROVIDE REAL-LIFE EDUCATIONAL OPPORTUNITIES THAT DEVELOP YOUNG PEOPLE WHO WILL HAVE A POSTIVE IMPACT IN THEIR COMMUNITIES AND THE WORLD.

INDIANA 4-H YOUTH DEVELOPMENT STRIVES TO BE THE PREMIER, COMMUNITY-BASED PROGRAM EMPOWERING YOUNG PEOPLE TO REACH THEIR FULL POTENTIAL.

WHAT IS 4-H?

INDIANA 4-H HISTORY

4-H began more than 100 years ago, and has since grown into the largest youth development program in the nation. 4-H prepares young people to be leaders in their community and around the world through hands-on experiences alongside their peers and caring adults. Backed by a network of more than 6 million youth, 540,000 adult volunteers, 3,500 professionals, and more than 60 million alumni; 4-H delivers research-based programming around positive youth development. 4-H is delivered through America's 109 land-grant universities and the Cooperative Extension Service - reaching every corner of our nation. In Indiana, 4-H can be found in all 92 counties as delivered through Purdue Extension.



4-H welcomes young people of all beliefs and backgrounds, empowering them to create positive change in their communities.

Indiana 4-H began in Hamilton County in 1904. On April 9, 1904, John Haines, superintendent of Hamilton County Schools, held a meeting for all boys interested in learning to grow corn. Mr. Haines is thus credited with planning the first junior club in Indiana. The record states, "Mr. Haines visited the projects, held two instruction meetings, and his members exhibited at the end of the year." The first 4-H club projects (market hogs) were exhibited at the Indiana State Fair in 1915. The first 4-H camp in Indiana was held near Evansville in 1922 with 840 youth and 150 leaders in attendance.



WHY SHOULD I JOIN 4-H?

4-H OPPORTUNITIES

4-H members can take part in short-term specific interest workshops that focus on anything from robotics to food science! 4-H members also have access to numerous scholarships, educational opportunities, and can build life skills through community involvement. Most of all, 4-H is real life experiences which are exemplified by our motto, "Learn By Doing".

ADDITIONAL OPPORTUNITIES FOR INVOLVEMENT

- Community Clubs
- After-School Programs
- School Enrichment
- Workshops
- SPARK Clubs
- Day Camps
- Volunteering
- Special Programs

4-H TRIPS

Youth will have an opportunity to register for trips such as:

- **Camps** - during camp 4-H members participate in activities such as boating, swimming, crafts, and more!
- **4-H Round-Up** - 4-H members can explore a variety of careers on the Purdue University campus.
- **4-H Academy** - is held at Purdue University where participants can learn about science careers in a hands-on way!
- **Citizenship Washington Focus** - this is an exciting experience for 4-H members to visit the nation's capital.

WINNING 4-H PLAN

4-H welcomes all youth. We strive to make reasonable accommodations for youth with disabilities to participate at all levels of our 4-H program. Contact 4-H Extension Educator Heather Dougherty at hdougher@purdue.edu to set up a meeting to have a discussion on creating a winning 4-H plan with the 4-H member. Accommodations are specific to the individual.



HOW DO I JOIN?

4-H enrollment opens on October 1 every year.

Enroll online at v2.4honline.com

Interested individuals can visit v2.4honline.com to create a profile, select a club(s), and sign up for projects. For help selecting a club check out the next section! Returning members will log into your 4HOnline account, register for the upcoming year, and make any necessary changes.

The 4-H program is open to any youth in grades 3-12 and has a \$25.00 enrollment fee. Mini 4-H is available to any youth in grades k-2 and there is no fee to participate. If the fees pose a hardship please contact the Extension Office for a scholarship request.

4-H SLOGAN
LEARN BY DOING

4-H MOTTO
TO MAKE THE BEST
BETTER

4-H COLORS
GREEN & WHITE

4-H EMBLEM
THE NATIONAL
4-H EMBLEM IS A
FOUR-LEAF CLOVER WITH
THE LETTER H IN EACH
LEAF.



Johnson County 4-H on the web
www.extension.purdue.edu/johnson

ONLINE REGISTRATION

What's the difference between 4-HOnline and FairEntry online systems?

4-H Online is our online enrollment system for all youth who enroll in the 4-H program. The current web address for this system is: v2.4honline.com. 4-H enrollment opens on October 1 each year. The 4-HOnline system collects our enrollment fees and allows you to sign up for your 4-H projects. Members will also use their 4-H Online profile to submit scholarships and register for events, programs and trips. Projects you're enrolled in, club membership, and your contact information are also stored in this system. At any time, you can log into your 4-H Online profile to confirm what you've enrolled in and update personal information.

FairEntry is a system we use to help organize the 4-H Fair, print exhibitor labels, and make show bills. FairEntry tells us exactly what projects will be exhibited at the fair. The FairEntry system opens early June and closes July 1. All members exhibiting at the fair have to log in to FairEntry and sign-up for the projects they are bringing to the fair. Livestock exhibitors will need to sign up their animals for their show classes.

4-H Online and FairEntry do save your information and profiles, making it easier for returning members! Members can also add or drop projects every year.

If you need any help, or have difficulties with 4-H Online or FairEntry please do not hesitate to contact our office. We are here to help!!





WHAT CLUB IS RIGHT FOR ME?

4-H members can be in one or as many clubs as they wish! Clubs provide the opportunity for face-to-face project review or questions, community service, program updates, and much more. Club meeting attendance is not required to be in 4-H but we strongly encourage our members to attend their club meetings.

All 4-H clubs will pass along important program updates. However, some are special interest and county-wide clubs. County-wide clubs include, dog, goats, horse & pony, lamb, poultry, rabbits, robotics, show stock, shooting sports, sportfishing, swine, and tractor. If you are interested in any of these projects it is suggested you enroll in the corresponding club. County-wide, project specific clubs will provide further education for each specified project.

A great way to choose a club is to find out if you have any friends that are involved in 4-H and find out what club they love!

PICK A
CLUB
THAT FITS
YOUR
SCHEDULE

PICK A
CLUB
THAT FITS
YOUR
INTERESTS

PICK A
CLUB
THAT IS
CLOSE TO
HOME OR
SCHOOL



HEAD



HEART



HANDS



HEALTH

4-H CLUBS

Following list contains one leader for each club.
Most clubs have multiple leaders. Contact the
office for more information.

CENTER GROVE AREA
Bargersville Blue Ribbon
Kim Robards
317-422-0875
kimberly.robards@yahoo.com

Bright Futures
Aaron & Sarah Riddle
317-201-2797
riddlenutz2@gmail.com

Hoosier Hotshots
Barbara Dunn
317-902-0015
bdunn48@gmail.com

FRANKLIN AREA
Awesome Achievers
Glenn Faris
317-412-3984
glennbfaris@gmail.com

Creekside Cougars
Kim Roberts
317-850-3060
kim@findleyauctioneers.com

Country Friends 4-H Club
Megan Graves
317-736-6576
gravesj88@yahoo.com

Hopewell Boys & Girls
Charlie & Becky Canary
317-736-6874
canfarm@embarqmail.com

FRANKLIN AREA
Jo Co Helping Hands
Diana & Dave Henderson
317-474-0706
diana0995@live.com

Power of Youth
Roxane Chadwell
317-294-0952
trchadwell@comcast.net

Shiloh Mix 'N Match
Phyllis Kasting
317-736-9542
pakasting@gmail.com

Union Township Boys & Girls
Emily Stewart
317-695-4724
dirtdarwin19@gmail.com

INDIAN CREEK SCHOOL AREA
Hensley Twp. 4-H Club
Nancy, Delbert & Katie Teeters
317-878-4594
Cowgirl41756@embarqmail.com

Nineveh Clover Rovers
Angel Barger
317-294-7763
abargerot@aol.com

GREENWOOD AREA
Thundering Herd
Isabel Hawkins
317-627-6320
imrodrig@yahoo.com

WHITELAND AREA
Clover Power
Jo Ellen Lengacher
317-260-6169
klengacher@att.net

Clover 4-H
Kelli Graham
317-363-0328
kshtigger@gmail.com

4-H CLUBS

COUNTY WIDE CLUBS

4-H Tractor Club

Amy Spurgeon
317-405-7349
amy.spurgeon.96@gmail.com

Johnson County Dairy Beef Club

Alicia Geesey
812-212-2366
aliciageesey@gmail.com

Johnson County 4-H Goat Club

Beth Goeb
317-474-0011
mgfarms2@gmail.com

Johnson Co. 4-H Lamb Club

Kathy Harrell
317-730-6670
j.r.harrell@att.net

Johnson County 4-H Shooting Sports

Samantha Morrison
317-474-8933
samanthadmorrison@gmail.com

Johnson County 4-H Sport Fishing Club

Paul & Sable Gentry
317-755-6687 or 317-469-3972
sportfishing4H@gmail.com

Johnson County 4-H Swine Club

Kim & Chad Robards
317-422-0875
kimberly.robards@yahoo.com

Johnson County Beaks N Bills

Angie Gibbs
317-560-3603
agibbs@ics-charter.org

Johnson County Rabbiteers

Shaun & Melinda Farmer
317-474-8794
shaunandmelindafarmer@gmail.com

Johnson County Hoofprints Horse & Pony Club

Stephanie Dunn
317-313-1445
stephaniejaneg7@hotmail.com

Johnson County Junior Leaders

Jeff Beaman
317-736-9356
jbeaman66@yahoo.com

Johnson County Mini 4-H Clovers

Barbara Souchon
317-450-0388
bsouchon@yahoo.com

Paw Pounders Dog Club

Jesse McKinney
317-777-0757
jesse@jessemckinney.com

Show Stock Society

Jeremy Armstrong
jarmstrong@rfemail.com



MORE THAN 60 PROJECTS!

There is no limit to the number of projects youth can sign up for, but start slow. We suggest with starting out with one or two your first year.

4-H PROJECTS

Add or change projects in 4HOnline by May 15!

Aerospace
Animal Education
Arts & Crafts
Auto/Truck
Beekeeping
Cake Decorating
Child Development
Collections
Computer Science
Consumer Clothing
Creating with a Mix
Crops
Cupcake Decorating
Do Your Own Thing
Electric
Entomology
Fashion Revue
Finance
Floriculture
Food Preparation
Foods

Forestry
Garden
Genealogy
Geology
Health
Home Environment
Indiana Heritage
Junior Leaders
Microwave Cooking
Photography
Scrapbook
Sewing
Shooting Sports
Small Engines
Soil & Water Science
Sportfishing
Sports
Tractor

Vet Science
Weather
Wildlife
Woodworking



Animal/Livestock projects include:

Aquatic Science
Beef
Cats
Dairy
Dogs
Goats
Horse & Pony
Poultry
Rabbits
Sheep
Small Animals
Swine





Mini 4-H

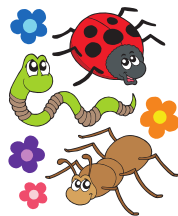
Grades K-2

Free to participate

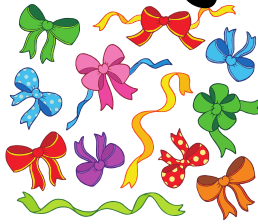
Mini 4-H Projects



Arts & Crafts



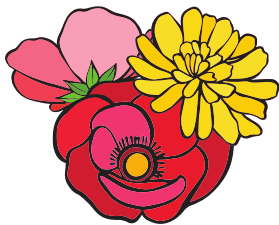
Bugs



Collections



Cookie Decorating



Flowers



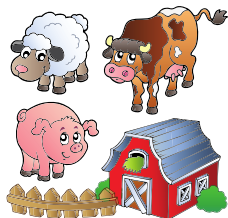
Foods



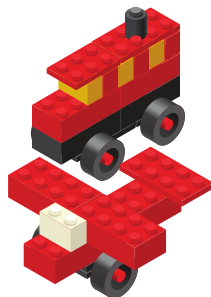
Forestry



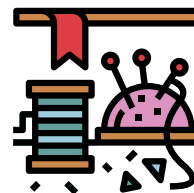
Horse & Pony



Livestock



Models



Sewing



Small Animals



Wildlife

Johnson County Mini 4-H Clovers

Mini 4-H Clovers club meets every other month at the Jo. Co. Fair Grounds, unless otherwise noted. Parent meetings will be in January & July. Club meetings are held in Feb, April, June. Mini Day camp is in June with the Fair in July!

Club Leaders: Barbara Souchon & Heather Polesel
Club Email - johnsonmini4h@yahoo.com

4-H DEFINITIONS

4-H Enrollment

- Each 4-H member enrolls online at the beginning of the 4-H year to join a 4-H club. The 4-H projects to select for the year are listed on our website as well.

4-H Club

- A 4-H Club is recognized as at least five eligible youth from at least three families that have completed the annual 4-H enrollment process. A 4-H club has by-laws, a constitution, club officers, and abides by Indiana 4-H policies.

4-H Handbook

- The book which lists the Johnson County guidelines for every project exhibit. A new book is published annually. It is very important that all 4-H families read and are familiar with book available in January each year.

Project Manuals

- 4-H member and leader guides are typically written by university specialists and serve as suggestions of areas to study in your 4-H projects.

Record Sheets

- Form submitted each year for project completion. All completed projects are listed on the same form.

Newsletter - Clover Connection

- The County 4-H newsletter, Clover Connection, is emailed to every 4-H family. This gives information about county level 4-H meetings and activities offered to 4-H members, leaders, and parents. For most events, this will be your only source of information.

Exhibition

- Exhibition in 4-H is the culmination of 4-H project work, often held in conjunction with the County 4-H Fair . Each project submitted for exhibition is evaluated on the degree to which it meets current year project guidelines.

Completion

- Completion in 4-H is achieved when a 4-H member enrolls in 4-H and is involved in some sort of 4-H programming (ex. 4-H project & exhibition, 4-H Camp, Spark Clubs, etc.)

4-H DEFINITIONS

PEOPLE IN 4-H

Local Level

4-H Member

- Anyone in grades 3-12 who participated in a local 4-H group or activity.

4-H Club Leader

- A volunteer who is responsible for the organizational part of the club.

Activity Leader

- A volunteer who is responsible for organizing and conducting special club activities.

Junior Leader

- A 4-H member who is in grades 7-12 and is willing to assume additional leadership and mentoring responsibilities within the 4-H program.

Parents or caregivers

- Parents are very important to the success their children will have in the 4-H Program. Parents are encouraged to attend monthly meetings and project workshops with their children. All countywide events are open and parents are encouraged to attend.

4-H Ambassadors

- Youth in grades 8-12 who help promote the 4-H program.

Project Resource Leader

- Adult Volunteer who agreed to share their knowledge of a specific project.

4-H Youth Development Extension Educator

Represents Purdue University Extension as the county-based professional responsible for the day-to-day operations and decisions of the county 4-H Youth Development Program. He or she helps interpret 4-H policies and works directly with volunteers in the development of the county 4-H program.

County Level

4-H Council

- This is the policy-making group, as well as the private funding source for a number of county-level 4-H programs including the County Fair.

Fair Board

- A group of volunteers that are voted into their position by the members of the Johnson County Fair Association. These volunteers are responsible for putting on the county fair each year and handling rentals of the grounds throughout the year.

Extension Board

- The County Extension Board is the advisory and advocacy body of the overall Purdue University Cooperative Extension Service in Johnson County, and consists of members representing the citizens of Johnson County, Indiana.

County Extension Director

- Provides overall leadership to the county Extension program areas.

Extension Educators

- They are the professionals who guide, teach, and administer the Extension Programs. They are staff members of Purdue University and Johnson County Government

4-H

DEFINITIONS

PEOPLE IN 4-H

State Level

Purdue University

- Purdue is a land-grant university that has the responsibility for taking education to the people of the state. The 4-H Youth Development Program is part of the directive in the State 4-H Office housed in the College of Agriculture.

Program Leader

- The State 4-H Youth Development Program Leader has the responsibility for 4-H programming at the state level.

State 4-H Specialists

- State Specialists have responsibility for the 4-H Youth Development Program on a statewide basis. Each specialist is responsible for a specific part of the total 4-H Program. They are based at Purdue University and are under the direction of the State 4-H Youth Development Program Leader.

Indiana 4-H Foundation

- This nonprofit organization works to provide additional resources for the 4-H Program. They sponsor scholarships, fund county and state programs, finance the State 4-H Volunteer recognition program, and support educational awards trips for outstanding youth on the state level. Forms for donations are available at the County Extension office. They also sponsor the 4-H license plate program. Contact the Extension office for information about license plates for your vehicles.

National Level

National Institute of Food and Agriculture

- A federal agency within the United States Department of Agriculture (USDA) - is part of USDA's Research, Education, and Economics (REE) mission area. The agency administers federal funding to address the agricultural issues impacting people's daily lives and the nation's future.

National 4-H Council

- Cooperates with local and state 4-H programs as it provides funding for national initiatives. Located in Washington, D. C.



4-H PARENTS

How Can Parents Help?

Parents can be encouraged to share their different talents, means and available time with the 4-H program. Not all people do the same thing well. It takes some analysis to find who can and will do certain tasks. For example, the parent will never appear in a public meeting, but may be willing to build a booth or floats, etc.

The most successful 4-H members have the interest and support of their parents or another caring adult. Often parents are willing to help but are not sure how, when or where they may get involved. Below are some suggestions for how parents can support 4-H members at home (1-9) and beyond (10-14). Share these suggestions with other parents of 4-H members so they are aware of and understand the ways to help. If you think of others, do not hesitate to add to the list.

1. Learn about 4-H, what it stands for; how it operates; how it is funded.
2. Advise your child in selecting 4-H projects.
Help your child understand how many projects will be reasonable to complete in a given year.
3. Show your interest in and enthusiasm for the projects selected. Find out what is suggested for the members to do and learn.
4. See that when a project is started, it is also completed.
5. Encourage your 4-H member when they succeed and even more when they fail. Help them see progress achieved and knowledge gained; not just the end result.
6. Be an example! Help your 4-H member be a good sport and appreciate the successes of others.
7. Stay informed about 4-H through information that comes to members of your family. Be a 4-H supporter in your community.
8. Make 4-H club work FAMILY work. Encourage youth to do their work and carry their own tasks to completion. Be their guide only.
9. Provide transportation to local meetings and county events in which your child and others of the club are interested. Or, provide refreshments for meetings or special functions. Don't wait to be asked, just volunteer to help!
10. Attend 4-H meetings and other special events.
11. Help your 4-H member find a way to participate in special events that interest them such as county contests, camps, fairs, displays, or shows.
12. Support your local 4-H volunteers. Get acquainted with them. Let them know you appreciate their efforts.
13. Offer your services to assist the local volunteers. You have knowledge and skills that are needed in 4-H.
14. If the need arises, help find local volunteers for your 4-H club. Several kinds of volunteers are needed: organizational, project and activity volunteers. Consider helping in one of these ways yourself. Applications are available in your local Extension office.



Remember that the real object of 4-H is to develop your children into outstanding, productive adults.

The way they do their activities and projects and conduct themselves at competitive events and meetings will help set work and character standards for the rest of their lives.



FREQUENTLY ASKED QUESTIONS

How do I know which projects to choose?

- Check out our project list and guidelines in the 4-H Handbook
- Find projects that relate to your child's interests
- Check out the Project Fair in November
- Ask friends that are in various projects
- Talk with your club leader
- Be sure to look at the projects on display at the Fair each year!

How do I know what to do for my projects?

- The 4-H Handbook lists all the rules, requirements and guidelines for each project and the trade level/division
- Project Workshops - Time for hands-on learning and demonstration
- Project Leaders/Superintendents, Clubs, & Club Leaders - Provide guidance and support

How do I exhibit my projects at the 4-H Fair?

In order to exhibit at the fair, the online enrollment must be completed. The projects must be chosen within the online enrollments. The projects must also be entered into FairEntry. The Judging Schedule in the 4-H Handbook outlines the dates & times in which the projects are due for delivery to the Johnson County 4-H Fairgrounds for the 4-H Fair.

IMPORTANT DATES

2026

January

1 - OFFICE CLOSED - NEW YEAR'S HOLIDAY
13 - Junior Leader Meeting
15 - PREFERRED ENROLLMENT DATE
19 - 4-H Council Meeting
19 - OFFICE CLOSED - MLK JR. DAY
25 - State 4-H Scholarship application deadline
26 - 4-H Volunteer Training

February

3 - New 4-H Family Night
10 - Junior Leader Meeting
16 - OFFICE CLOSED - PRESIDENT'S DAY
16 - 4-H Council Meeting

March

1 - Ownership Deadline for Dogs
4 - 4-H Officer Training
7 - Cattle ID and Weigh-In
10 - Junior Leader Meeting
16 - 4-H Council Meeting
18 - Ag Day Breakfast & Purdue Extension Annual Meeting

April

3 - OFFICE CLOSED - GOOD FRIDAY
14 - Junior Leader Meeting
20 - 4-H Council Meeting

May

2 - Goat/Dairy Feeder Steer/Sheep Identification
5 - OFFICE CLOSED - PRIMARY ELECTION DAY
12 - Junior Leader Meeting
15 - All livestock ID must be entered on 4-H Online.
NO EXCEPTIONS
15 - Preferred Project Drop/Add Date
18 - 4-H Council Meeting
25 - OFFICE CLOSED - MEMORIAL DAY
27 - Volunteer Training

June

1-3 - 4-H Camp
9 - Junior Leader Meeting
15 - 4-H Council Meeting
23-24 - Mini 4-H Day Camp

July

1 - FairEntry, IQLC/YQCA, Record Sheets Due
3 - OFFICE CLOSED - INDEPENDENCE DAY
9 - Fair Set-Up, 4-H Council Meeting & Junior Leader Meeting - 5:30pm
13-17 - JUDGING WEEK - Check schedule
19-25 - 2026 Johnson County Fair

August

Indiana State Fair: August 7-23 (closed Mondays)
10 - 4-H Council Fair Evaluation Meeting

September

7 - OFFICE CLOSED - LABOR DAY
21 - 4-H Council Meeting

October

1 - 4-H Enrollment Opens for 2026-2027
19 - 4-H Council Meeting

November

3 - OFFICE CLOSED - GENERAL ELECTION DAY
10 - 4-H OPEN HOUSE
11 - OFFICE CLOSED - VETERANS DAY
16 - 4-H Council Meeting
26 - OFFICE CLOSED - THANKSGIVING
27 - OFFICE CLOSED - THANKSGIVING

December

1 - Junior Leader Meeting
8 - Junior Leader Meeting
21 - 4-H Council Meeting
24 - OFFICE CLOSED - CHRISTMAS
25 - OFFICE CLOSED - CHRISTMAS

Dates are subject to change, please refer to most recent correspondence.

NOTES:

Do you know...

1. The name of your club? _____

2. What is your club meeting schedule?

3. What projects are you taking this year?

4. When are your project workshops (if applicable)?

Additional Notes:



Heather Dougherty
County Extension Director
4-H Extension Educator
hdougher@purdue.edu

Amy Spurgeon
Program Assistant
spurgeoa@purdue.edu



PURDUE EXTENSION – JOHNSON COUNTY
484 N MORTON ST FRANKLIN, IN 46131
www.extension.purdue.edu/johnson 317-736-3724