

# June 2024 Newsletter

Dear Friends,

Congratulations to all of the recent graduates around the county! Now that school is out it's 4-H time. I am looking forward to being out of the office next week with 25 Jefferson County 4-H members at SEI 4-H Camp. Fair Entry is officially open! Please sign up for your show classes and exhibits on [jeffersoncounty.fairentry.com](http://jeffersoncounty.fairentry.com) by June 24th. Reach out to our office with questions or information on upcoming opportunities. The next 4-H Fair board meetings will be June 6th at 7pm in the Community Building and June 27th at 7 pm in the Community Building.

## In this Issue

- 2 SEPAC Field Day, Hay Contest, Food Vision Meeting
- 3 FairEntry Opens June 1st
- 4 Junior Leaders, 4-H Hike, College Credits for 4-H Participation
- 5 QLC, Rabbit Tattooing, Fashion Revue, Queen Contest
- 6 Club Leader Updates, Exhibit Hall Watch
- 7 Fair Flyer
- 9 Project Check In Map
- 10 Upcoming Events

## Staff Directory

### Britt Copeland

County Extension Director  
4-H/ANR Extension Educator  
[copelanb@purdue.edu](mailto:copelanb@purdue.edu)

### Diane Thorpe

4-H Program Assistant  
[thorped@purdue.edu](mailto:thorped@purdue.edu)

### Kasie Bachmann

Office Manager  
[kbachman@purdue.edu](mailto:kbachman@purdue.edu)

### Jorja Hazelwood

Summer Intern  
[hazelwoo@purdue.edu](mailto:hazelwoo@purdue.edu)

### Rebecca Gatz

Summer Assistant  
[gatzr@purdue.edu](mailto:gatzr@purdue.edu)



Join us for a day of fun & learning on the Jefferson Co 4-H Fairgrounds!

**What:** Mini 4-H is a noncompetitive, exploratory youth development program that gives members the chance to experience 4-H Healthy Living, STEM, and Citizenship programming through hands-on activities. Mini 4-H is for youth in grades K-2.

**When:** **Saturday, June 29 from 10am - 2pm** at the Jefferson County 4-H Fairgrounds. Check in is located in the Community Building.

**Cost:** This event is free to all Mini 4-H members. Not a 4-H member? It is \$1 to enroll in Mini 4-H for youth in Kindergarten through second grade. Go to [v2.4honline.com](http://v2.4honline.com) to enroll!

**How to Register:** Please register by June 21, 2024 on 4-H Online Events, the link below or by calling the Office.

Go to [mini4hdaycamp.4honline.com](http://mini4hdaycamp.4honline.com) to register today!

## New Face in the Extension Office

Rebecca Gatz will be joining the extension office team this summer to support fair time activities. She is currently a 2nd grade teacher at Anderson Elementary. We are excited to have her youth development talents this summer! We are also excited to be fully staffed in time for fair! Please help us welcome Rebecca to the team when you see her next.



# Agriculture & Natural Resources

Save the date: SEPAC Field Day 2024



## Food Vision Focus Group:

Ohio, Switzerland, Jefferson, & Scott Counties

June 18th, 2024 at 12:00pm-1:00pm via Zoom

We want to hear from you!

Indiana is creating its first Food Vision. This food vision is a strategic roadmap for creating a food system where all Indiana communities thrive.

### Why is a Food Vision Important?

- It informs decision makers across the state, assists in obtaining funding, identifies needs of the food system, provides a framework for statewide collaboration, and more!

### How can YOU Help?

- If you live or work in one of the above counties, we would love to invite you to attend our Food Vision Focus Group session on June 18th at 12:00pm-1:00pm. During the session, we will discuss the unique challenges and opportunities of our local area's food system.
- Join the Zoom session by following the link or scanning the QR code. Meeting ID: 931 7686 1819 ; Passcode: 764091
  - <https://bit.ly/3WWG7y6>



Questions? Please contact Jessica Martini at [koons0@purdue.edu](mailto:koons0@purdue.edu) or call (812)438-3656

Purdue University Cooperative Extension is an Equal Access/Equal Opportunity Institution



Community members are invited to join us for the annual Southeastern Purdue Agricultural Center Field Day on August 27, 2024 from 4 pm-8 pm. We hope you can join to discuss practical applications of the research being conducted at SEPAC.

PARP/CCH credit fees are complimentary thanks to the following sponsors:



#### Agenda

#### 4 pm to 7 pm - Field Rotations

- **Corn Management: Is Short Corn the Future?**  
Dan Quinn, Purdue University
- **Soybean Management: Update on Soybean Research at Purdue**  
Shaun Casteel, Purdue University
- **Disease Update: Effectiveness of SUAS for Fungicide Applications**  
Darcy Telenko, Purdue University
- **Field Edge Management**  
Dave Osborne, Purdue Extension

#### 7:15 pm - Dinner

PARP/CCH/CCA Credits

AUGUST 27, 2024 • 4:00-8:00 PM  
4425 E CO RD 350 N BUTLERVILLE, IN 47223

REGISTER BY CALLING THE JENNINGS CO. EXTENSION OFFICE  
(812) 352-3033



Extension - Agriculture and Natural Resources

Purdue University Cooperative Extension is an Equal Access/Equal Opportunity Institution

## HOOSIER HAY CONTEST



Don't guess the quality... Test it!

\* Hay and Baleage Categories \*

Special Thanks to Contest Sponsors



Organized by: Indiana Forage Council

Entry Deadline: September 30, 2024

Rules and Entry Form: <https://indianaforage.org/>

Awards for both Hay and Baleage Categories

1<sup>st</sup>: \$250 • 2<sup>nd</sup>: \$150 • 3<sup>rd</sup>: \$100

## New Extension Publication Available to support Oak-Hickory Ecosystems

By Wendy Mayer- May 22, 2024

Oak-hickory forests, which are comprised of a variety of different tree species, shrubs, grasses, sedges and wildflowers, as well as wildlife, including songbirds, are important to Indiana's biodiversity. Learn how you can support oak-hickory ecosystems on your property through a new publication, "[Forest Stewardship for Oak-Hickory Ecosystems in Indiana](#)," produced by Let the Sun Shine In - Indiana.



"The goal of this publication is to provide woodland owners with information about the stewardship practices they can use to sustain and enhance oak-hickory ecosystems on their land," said co-author Jarred Brooke, Purdue Extension wildlife specialist. "Having this information will help them make informed decisions about how to manage their land to meet their forestry and wildlife objectives."

[Read the full article here:](https://bit.ly/3Kpi4QF) <https://bit.ly/3Kpi4QF>





## Fair Entry Opens June 1!- Entry Deadline June 24

Fair Entry is the final step in getting your projects ready for the fair. This system takes all of the information you entered into 4-H Online and lets you sign up for the classes and divisions you will exhibit at the fair. This is the system we use to build livestock show schedules and print entry tags. **Please help us by completing fair entry by June 24, 2024!**

If you do not fill out Fair Entry by June 24th your name will not appear on the pen request sheets, won't be listed in livestock show bills and you will have to go to the extension office to fill out fair entry on Project Check In Day which will slow down the process. We understand that finding reliable internet access is a challenge. Please call the Extension Office at (812) 265-8919 or stop by before June 24th so we can enter your divisions and projects for you.

**You cannot register your project on the Fair Entry website if you have not paid the State Program fee and been marked "active" on 4-HOnline.**

### How do I exhibit my project at the Fair?

#### Step 1: Enroll on 4-H Online.com

- Select projects, clubs, and events

COMPLETE

#### Step 2: Pay your 4-H Dues

- Pay your 4-H member dues online when you enroll or in person at the office.
- You cannot complete your entries without first paying your dues.

COMPLETE

#### Step 3: Register Animals on 4-H Online by May 15th

- Livestock & Horses need to be enrolled online. Cats, Dogs, Poultry and Rabbits do not.
- Dogs, Cats and Horses require Vaccination Forms before they are allowed to participate.

COMPLETE

#### Step 4: Complete Required Trainings

- Quality Livestock Care or YQCA is required for Livestock Projects, Rabbits and Poultry.

COMPLETE

#### Step 5: Enter your Projects into the Show Classes and Divisions you want on Fair Entry.com

- Projects and Animals are imported from 4-H Online to Fair Entry. You select Arts and Crafts on 4-H online. Fair Entry is where you decide if its, a model, fine art

IN PROGRESS

#### Step 6: Enter your Projects on the Dates and times listed on the Fair Schedule. Good Luck!

## Instructions for [Jeffersoncounty.fairentry.com](http://Jeffersoncounty.fairentry.com)

1. Go to [Jeffersoncounty.fairentry.com](http://Jeffersoncounty.fairentry.com)
2. Sign in with your **4Honline email and password.**
3. Click "Begin Registration" then Click "Individual" and choose the child you would like to enter. Confirm your contact information.
4. Click "Continue to Entries" then click "Add an Entry"
5. Select your "Department"
  - Exhibit Hall Projects such as Photography are in the "State Projects" Division.*
  - Exhibit hall projects that don't advance to State Fair such as Sewing for Fun are in "Exhibit Hall (County Projects)" department*
6. Select your "Division" then Select your "Class"
7. Review Entry and then Select your "Club"
8. If this is an animal entry, after you select your club you will enter your animal. When adding an animal entry.
  - i. Use "Choose and Existing Animal Record"-SWINE, CATTLE, HORSE, SHEEP, GOATS
  - ii. Use "Enter a New animal record" -RABBITS, POULTRY, DOG, CAT
13. Enter a Description for a non-animal entry.
14. Click Continue. At this point you can:
  - a. Add another Entry-for this child
  - b. Add another Entry for this Division-same child, same division
  - c. Register another exhibitor-new child
  - d. Continue to payment- Click this when you have completed all entries for all children. **All entries are free, no payment needed.**
16. Review your entries, click Submit
17. Make sure you make it to the THANKS! page. You're Done!

[Click here for a longer format instruction help sheet with photos!](https://bit.ly/3yFHpU7) <https://bit.ly/3yFHpU7>





# 4-H Youth Development



Junior Leaders, thank you for leading activities at the Boys and Girls Club, Farmers Market and La Casa Amiga this month! Our next big event is Mini 4-H Day Camp and we need all hands on deck! Please let Britt know if you are able to help!

Junior Leaders is for youth in grades 7-12 who are interested in learning leadership skills and helping with acts of service. Current Junior Leaders should enroll in the Junior Leaders project to receive email reminders and text @c8k6cb to 81010 to join our text group.

**Sign up for these events in the links below.**

### **June 11th– Hike & Pitch In Lunch at Clifty**

We will be taking a guided hike on June 11th at 10 am. To comply with university policies please register on 4-H online events here: [jrlead-erhike.4honline.com](http://jrlead-erhike.4honline.com). More details will be emailed out closer to the event.

### **June 25th– Host Fashion Revue**

We will need an emcee for Fashion Revue! If you are interested in helping out in anyway sign up at the April Meeting.

### **June 29th– Mini 4-H Day Camp**

It's all hands on deck for Mini 4-H Camp! We will need help setting up around 9 am and will be done by 3:00 pm. We are especially looking for members to bring large animals to the fairgrounds. In March the group chose "Space" for this years theme. For compliance with University policies I need Junior Leaders to sign up here: [mini4h-daycamp.4honline.com](http://mini4h-daycamp.4honline.com)

### **July 2nd– Judge Helpers Needed for Project Check In**

Junior Leaders help with Judges Dinner, running projects and more. Find Britt in the Community Building for Judges Orientation at 3 pm or talk with Kasie in the old exhibit hall whenever you are done submitting your own projects.

**June 11, 2024**  
**Clifty Falls State Park**

Hiking Trail #7 with Park Naturalist at 10 am

Pitch-In Lunch at Noon (Shelter House Location to be emailed)

Discounted Admission for Picking up Trash

Register Here: [jrleaderhike.4honline.com](http://jrleaderhike.4honline.com)

**4-H Junior Leaders Hiking Outing**

**Open to all 4-H Club Members!**

Grades 7 & Below must be accompanied by a guardian.

Purdue Cooperative Extension is an equal access/equal opportunity institution.



## **Earn Purdue Credit with your 4-H Experience!**

*Are you admitted/accepted into Purdue University?  
Use your 4-H experience to receive credit for 1st year courses!*

#### **Approved Direct Credit Courses**

- EDCI 35000 - Community Issues & Applications For Educators (1 Credit)
- EDCI 207 - Construction and Textile Lab Management (3 Credit)
- HORT 10100 - Fundamentals of Horticulture (3 hours)

Interested?  
Scan here!



Questions? [OCP@Purdue.edu](mailto:OCP@Purdue.edu) | (765)494-2345





## Livestock Quality Care Training June 25th at Noon



QLC is required for every Indiana 4-H member showing livestock and costs \$3. If you cannot attend the in person Jefferson County Training, you can complete Youth for the Quality Care of Livestock (YQCA) online for \$12. We do not have login access to this program anymore so you will have to email proof of completion to [copelanb@purdue.edu](mailto:copelanb@purdue.edu). Please register for QLC trainings on 4-H Online. At the door registrations are also accepted.

**3rd Training June 25th @ noon in the Community Bldg.**

**4th & Last Training– July 1 @ 6 p.m. in the Community Bldg.**

## Rabbit Meat Pen Tattooing June 25, 5:30 pm

Rabbit Superintendents will be in the Beef Barn Thursday, June 25th from 5:30 pm to 7 pm to tattoo Meat Pen Rabbits. **Only Rabbits exhibiting in the meat pen class need to be tattooed.** Stop by the Beef Barn before/after the Fashion Revue. Contact the office or your rabbit superintendents with any questions.

Superintendents wish to remind you that you are able to tattoo 4 meat pen rabbits if you so wish. You will pick the best 3 to exhibit at the fair. A meat pen consists of 3 rabbits of the same breed weighing 3 1/2 –5 1/2 pounds and not over 69 days of age.



## Jefferson County 4-H Fashion Revue June 25th at 6:00 pm

All members enrolled in the various sewing projects are invited to participate in the **Jefferson County 4-H Fashion Revue on June 25<sup>th</sup> at 6:00 p.m.** Registration will begin promptly at 5:30 p.m. Participants will need to turn in a **Narration** for the host to read while the 4-H member models their clothes. This will be collected on the 4-H Online event registration. Click here to fill it out: [fashionrevue.4honline.com](http://fashionrevue.4honline.com). Or call or stop by the office for us to fill it out for you.

## Miss Jefferson County 4-H Pageant June 25th at 7:00 pm

The Miss Jefferson County 4-H Fair Pageant will be held June 25th. To participate in this program you must be at least 18 and cannot have reached your 22nd birthday on

or before June 1, 2025. There will be a meet and greet on June 9<sup>th</sup> @ 7pm at Little Golden Fox where pictures will be taken for the Newspaper. Applications are due June 15<sup>th</sup>. Don't miss your chance to participate for the title of Miss Jefferson County! Contact Cara Fox with any questions or concerns at 812.599.0356 or [cmdavis20@yahoo.com](mailto:cmdavis20@yahoo.com) application and rules are located at <https://bit.ly/3yHQsUv>





# 4-H Youth Development



## Pen Setup & Exhibit Hall Clean Up June 27th, 5:30 pm

If available consider coming out to the Fairgrounds on June 27th to help our volunteers set up for fair! Rabbit/Poultry and Sheep/Goat barns have a more labor intensive set up. Head to your respective barns when you arrive at the fairgrounds. Project superintendents will direct you to help where you are needed. The exhibit hall will also need helpers to clean tables and move heavy display cases into position for project judging. Volunteers are what make our fair possible. Fair will be here before we know it!

## 4-H Club Updates:

### 4-H Club Challenge! Thursday, July 11 at 2:30 pm

4-H Club Leaders make sure you have your club represented at the annual 4-H Club Challenge the Thursday of Fair at Betty's Barn at 2:30 pm! There is no registration necessary this is just an opportunity to have some fun with water games, relay races, snow cones and hot dogs provided by the fair board. Clubs will be combined/divided when necessary to make even numbered teams. Hope to see you there!



### Mini 4-H Barn Blast! Thursday, July 11th at 7 pm

The fun and games just don't stop the Thursday of Fair. Join 4-H leaders in the show arena for more fun especially for our Mini 4-H Members! No registration necessary, just current enrollment in 4-H required.

### Barrel Painting Contest

The 2024 Barrel Painting Contest theme is "Inspire Kids to Do." We encourage you to drive back to the beef barn and pick up a trash barrel that needs some love and give it a fresh coat of paint! Make sure your masterpiece has the Club Name, Year and Theme painted on it. Drop completed Barrels in the Exhibit Hall Breezeway anytime before project check in day to be judged.

### 4-H Club Photos for the Fair Preview in the Paper

Email your club photos to the office as close to June 1st as you can to be included in the fair preview. Please include a list of members who are pictured.

## Exhibit Hall Watch Sign-Up

Monitoring the Exhibit Hall to ensure 4-H member's projects are taken care of is a task that requires all of us to complete. You can still sign up for days your club is not responsible for, but club leaders are encouraged to help fill slots on their day by recruiting members and parents.

Please fill out this Sign Up Genius or call the office to fill it out for you. <https://bit.ly/4329hMa>





## 4-H Pre-Fair Schedule

### Monday June 24

All Jefferson County 4-H Animal & Exhibit Hall Project entries due on FairEntry

### Tuesday, June 25

5:30 pm 4-H Meat Pen Rabbit Tattooing

6:00 pm 4-H Fashion Review

*Community Building*

7:00 pm Miss Jefferson County Contest

*North Madison Christian Church*

### Thursday, June 27

5:30 pm Exhibit Hall & Pen Set Up

7:00 pm 4-H Fair Board Meeting

## 4-H Fair Board

Scott Hubbard	265-5144	President
Tanner Mahoney	701-6698	Vice President
Larry Sedam	866-5852	Secretary
Mary Ellen Wehner	701-2213	Treasurer
Billy Keller	599-5072	Grandstands
Brice Gray	599-6182	Grounds
Emerson Coles	292-4359	Grandstand
Bill Miller	866-2613	Roads & Parking
Linda Shinfessel	265-3816	Livestock Auction
Aaron Clayton	701-4104	Merchant Bldgs.
Mike Hazelwood	265-4312	Grounds
Ashley Shepherd	701-9136	Community Bldg.
Mary Mehl	701-0541	Exhibit Hall
Rick Stockdale	866-5156	Front Gates
Bill Cain	873-6683	Concessions
Alinza Deuser	701-2842	4-H Leader Rep.
Britt Copeland	265-8919	Extension Edu.
Erin Culver		4-H Junior Leader Rep.
Molly Bruce		4-H Junior Leader Rep.
Wenda Feutz		Extension Homemakers Rep.

**Be a part of the fun, Join 4-H!**

**Contact Purdue Extension Jefferson County**

Call (812) 265-8919

Go to extension.purdue.edu/jefferson

## Trophy & Award Sponsors

A & K Beauty Shop	David & Judy Smith	Jason & Mary Ellen
Aaron & Greta	Deputy 4-H Family	W. Ehner
Clayton Family	& Friends 4-H Club	Jefferson County
Ahlgall Phillips	Deputy Self Storage	Democratic Party
Alenza & Tyler	Deputy's	Jefferson County
Deuser	Performance Horses	Jefferson County
Alexis & Bo Napier	Deputy Yard &	Extension
Amy Jo Wheeler	Garden - Dale	Homesteaders
Anderson's Sales & Services	Armstrong Family	Jefferson County 4-H
Annie & Jason	Don Phillips of	Junior Leaders
Copeland	Hilliard Lyons	Jefferson County
Ashley & Cory	Dr. Joy Barron, DMV	Republican Party
Oren	Dr. Ivan Rimsridt &	Jeremy & Gina Dean
Arnold & Ruth	Family	Jerry & Bess Adams
Curry	Dr. Pat & Dr. Sue	Jessica, Jordan &
Auxier Gas Service, Inc.	Stack	Jacob Bell
Barbara Kelly- BB DD	Dr. Savannah	Jill Deputy
Ranch	Hubbard, O.D	Jim Elston Family
Bechman Family	Elston Farms	Jimmy Long
Farm, Chance &	Farm Bureau, Inc.	Joe Neher Family
Carrie Bechman	Insurance	John & Kim Garland
Benny & Robin	Farm Credit Services	John & Mary Wilson
Hasslunder	of Mid-America	John & Marilyn
Bill & Ginger Sexton	Ferguson Auctions	Hurchinson
Billy Bob & Kristin Miller	Ferris Rare Breed	John & Rhonda Noel
Black Diamond Farm	Poultry Farm	John & Vicki
Blake & Natasha Jones	First Financial	W. Ehner Family
Bo & Alexis Napier	Gary & Linda	Judy Elston
Bob & Debbie	Shinfessel	Keegan Gross
McKenzie	Gerald & Debbie	Keith & Karen
Bobby & Kathy	Barnes	Howard Keller
Bobby & Mary	German American Bank	Family
Shepherd	Gray Show Pigs	Koehler Tire &
Boonie's Water	Gilbert & Paula Blac	Supply Inc.
Conditioning Inc.	Hammersley Farms	Krista & Kody Coles
Brandon Brawner & Family	Home Grow n 4H Club	Kyle & Kira Martin
Brawner Family	"In Memory of Bill & Gwen Keller"	& Family
Brian, Caleb & Claire Phillips	"In Memory of Connie Mohoney"	Lakyn Wilson
Brice Gray- Farm Bureau	"In Memory of Dennis Gray"	Lane Coles
Bureau Bridget & Jordan Leach	"In Memory of Josephine Schoolcraft"	Larry & Tammy Sedam
Cain Farms	"In Memory of Kim Coles"	Lew's Fritter
Caleb, Claire, Cora & Wyatt Phillips	"In Memory of Pat Beckman"	Luke, Jake & Allie Coles
Candile & Ryan Leach	"In Memory of Tricia Newman" - Bub & Lonnie Birge	Marshall Club Lambs
Champs Sports & Corporate Apparel	"In Memory of Tre Colber" - Kloss	Mark & Tara Cash
Chris & Tristian Inel Family	Family	Marshall Farm LLC
Cilly Garden Center	"In Memory of William & Pauline Hurchinson"	Matthew Brawner &
Colten Insurance	James W. Ehner Feed & Seed	Family
Agency Crista & Tim Bolderly		Michelle, Laykyn, Caroline & Cole
Danny & Alyssa Shelton		Beckman
		Melinda Shinfessel
		Michael & Addison Brawner
		Mid-Crites Overhead Doors
		Mike Koehler Farm Bureau Insurance
		Mike & Linda
		W. Ehner
		Michael & Allie
		Briggs
		Michael & Landon Gross

# Jefferson County

## 4-H Fair



# July 8-13

Jefferson County 4-H  
Fairgrounds

3851 SR 256 Madison, IN 47250

[Jeffersoncounty4Hfair.com](http://Jeffersoncounty4Hfair.com)

[Extension.purdue.edu/jefferson](http://Extension.purdue.edu/county/jefferson)

## 4-H Fair Events

### Tuesday, July 2

4-7 pm 4-H Exhibit Hall Project Check In

### Friday, July 5

3-7 pm Enter Poultry and Rabbits

### Saturday, July 6

7-9 am Enter Swine

9-11 am Swine Weigh In

8:30-11:30 am Enter Open Class Exhibits

10 am 4-H Poultry Show

10 am 4-H Dog Show

2:30-4:30 pm Enter Beef

5-8 pm Enter Sheep & Goats

### Sunday, July 7

1 pm 4-H Horse Show

Contesting & English

2 pm 4-H Tractor Operator Contest

### Monday, July 8

6 am 4-H Livestock Auction Pictures

Beef- 6 am Swine- 6:30 am

Sheep- 7 am Goat- 7:30 am

6-11 am Enter Dairy Heifers & Cows

9 am 4-H Rabbit Show

10 am Hutchinson Award Sheep Test

5:30 pm 4-H Goat Show

### Tuesday, July 9

8:30 am 4-H Horse Show- Western

5 pm 4-H Swine Show

### Wednesday, July 10

9:30 am Farm Bureau Kiddie Tractor Pull

10 am 4-H Dairy Show

### Wednesday, July 10 -Continued

2 pm Rabbit/Poultry Ambassador Test

2 pm 4-H Cat Show

5 pm 4-H Sheep Show

### Thursday, July 11

8 am 4-H Beef Show

2:30 pm 4-H Club Challenge

6 pm Horse & Pony Fun Show

7 pm Mini 4-H Barn Blast

11- Midnight Homebound Swine Released

### Friday, July 12

1 pm 4-H Livestock Auction

5 pm Auction Dinner

6:30 pm Round Robin Showmanship

11-Midnight Livestock Released

Must be cleared with Superintendent

### Saturday, July 13

10-Noon Open Class Exhibit Release

Noon-4 pm 4-H Exhibits Released

2 pm Annual Fair Board Meeting

4 pm 4-H Awards Program

### 4-H Exhibit Hall & Open Class Bldg.

Open Sunday-Friday, July 6-13 from 4-9 pm

### Commercial Buildings

Open Monday-Friday, July 8-13 from 6-9 pm

### Poor Jack Amusements- The Midway

Open Mon July 8 – Sat July 13

6-11 pm

Kiddie Day is Wed, July 10 from

1-5 pm

Pricing tbd.

### Parking Fee

\$2 admission per car/ walk in during peak hours

### Pavilion Entertainment

Sun 6:30 Vespers – Hope Valley Church

Mon 7 pm Michael Farmer- Live Music

Tues 7 pm Southern Indiana Cloggers

Wed 7 pm Taylors Tae Kwon Do

Thurs 7pm Dance Ability

Fri 7 pm Country Kickers Line Dancing

### Grandstand Entertainment

Mon 7 pm Bus Demolition Race-\$15

Tues 7 pm Horse Pull- tbd

Wed 7 pm Car Race - \$15

Thurs 7pm Madison Indiana Bull Bash

Adults \$20/Kids \$10

Fri 7 pm Demolition Derby-\$15

Detailed Grandstand information & prices available

at [jeffersoncounty4hfair.com](http://jeffersoncounty4hfair.com). \*Pit tickets & Seating

on the track prices will vary & will be posted at ticket booth.

### Tots & Tykes Contest

Monday July 8<sup>th</sup> & Tuesday July 9<sup>th</sup> at 7pm in

the Community Building. Registration begins at

5:30 pm. 4-14 mo. divisions exhibit Monday, Birth

to 4 mo. & 14mo. - 4 years divisions exhibits

Tuesday.

### Trophy & Award Sponsors

Milk Marketing, Inc.	Shari Stites	The Bachmann
Mr & Mrs Stan Phillips	Shella Adams -In	Family
Napier Trucking	Memory of Bennet	The Keller-Families
ILC - Alexis & Bo	Adams	The Bill Hensler
Napier	Shorts Farms &	Family
Ohio Valley Meat	Family	The Wilber &
Processing	Simmons Physical	Schirmer Families
Penny & Tony	Therapy	The Woodhill Farm
Gordon	Simple Farm Life	TNT Tool &
Pets Doc Veterinary	Boutique	Equipment Rental
Clinic	Soil & Water	Todd B ruther-Farm
Petrit & Associates,	Conservation	Tom & Carolyn
INC	District	Kemp
	Southeastern IN	





# 4-H Youth Development



## Exhibit Hall Project Check In Tuesday, July 2 from 4-7 pm

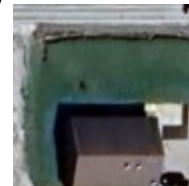
Fair is creeping up fast! It's time to start researching, snapping those photos and gluing the posters together. If you are enrolled in a 4-H project such as photography, aerospace, or any project that completes with a poster or an exhibit you will turn your project into be judged on **Tuesday, July 2nd from 4-7pm**. Please note this is a Tuesday this year not a Thursday because of how the 4th of July falls. Judges will have the opportunity to ask 4-H members about their projects and give feedback at this open judging event. Also new this year, no record sheets are required. Only skills sheets and recipe cards that are to be turned in or attached to the project. Consult your 4-H Handbook for specific project requirements or call the office.

### On Check In Day:

**Step 1:** Pick up your **Fair Entry** Cards from the North Exhibit Hall Open Class door and attach them to your projects. Make sure you have your skills sheets, recipe cards and references with you if applicable.

**Step 2:** Turn in your projects to be judged at the below locations, answer questions, receive feedback and you're done!

**Step 3:** Swarm the exhibit hall the second it opens on the Sunday of Fair to see what ribbon you received! Exhibit Hall Grand Champions receive their trophy at the Awards Program the last Saturday of Fair at 4 pm and have a grand champion t-shirt they can pick up from the Farm Bureau Building during fair.



**Extension Office-** you will be sent here if your FairEntry is incomplete

1. North Exhibit Hall
Door Facing Pavilion
Check-In
Midway Side Door
Mini 4-H
Breezeway Door
Giftwrapping, Cake Decorating

2. South Exhibit Hall
Breeze Way Door
Floriculture & Plant Sciences, Woodworking
Barrel Painting
Garden, Potato, Single Vegetable, Herb, Fall Crops
Livestock Barn Door
Arts & Crafts

3. Community Building
Main Door
Foods, Food Pres, & Microwave Foods
Photography
Electric
Consumer Clothing, Sewing for Fun, Sewing Non-Wearable, Sew-
Home Environment
Child Development
Health
Scrapbook



4. Merchant Building B
North Door- Food Booths
Geology
Entomology
Genealogy
Weather & Climate Science
Beekeeping
Wildlife
Soil & Water
Computer
South Door- Farm Bureau
Forestry
Vet Science
Tractor
Shooting Sports
Sport Fishing
Animal Poster

5. Pavilion
Aerospace

## Upcoming Dates

<u>Date</u>	<u>Event</u>	<u>Place</u>	<u>Time</u>
June 4-7	4-H Camp	Camp Higher Ground	
June 6	Fair Board Mtg	Community Building	7:00p.m
June 11	Junior Leaders Hike	Clifty Park	10:00a.m
June 25	Quality Livestock Training	Community Building	12:00p.m
June 25	Rabbit Tattoo	Beef Barn	5:30-6:30p.m
June 25	Fashion Review	Community Building	6:00p.m
June 25	4-H Pageant	North Madison Christian Church	7:00p.m
June 29	Mini 4-H Camp	Community Building	9:00a.m-3:00p.m
July 1	Quality Livestock Training	Community Building	6:00p.m
July 2	Project Check-In	North Exhibit Hall	4:00-7:00p.m
July 4	Fair Board Mtg	Community Building	7:00p.m
July 8th-13th	4-H Fair		

**NONPROFIT ORG.**  
**U.S. POSTAGE**  
**PAID**  
**MADISON, INDIANA**  
**PRMIT No. 15**

PURDUE UNIVERSITY COOPERATIVE EXTENSION SERVICE  
 Jefferson County  
 3767 W SR 256  
 Madison, IN 47250-3511  
 Cooperating with U.S. Department of Agriculture

